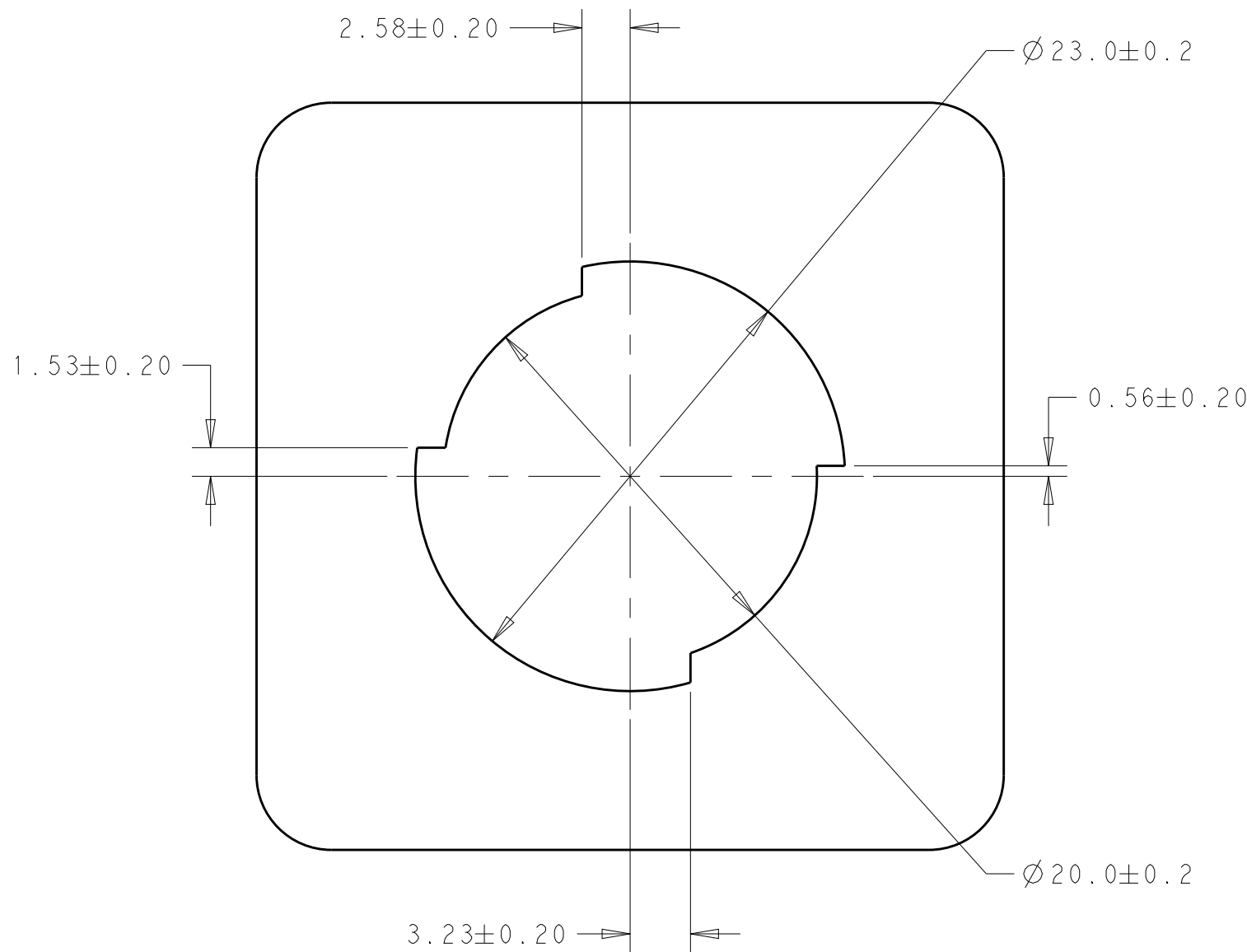
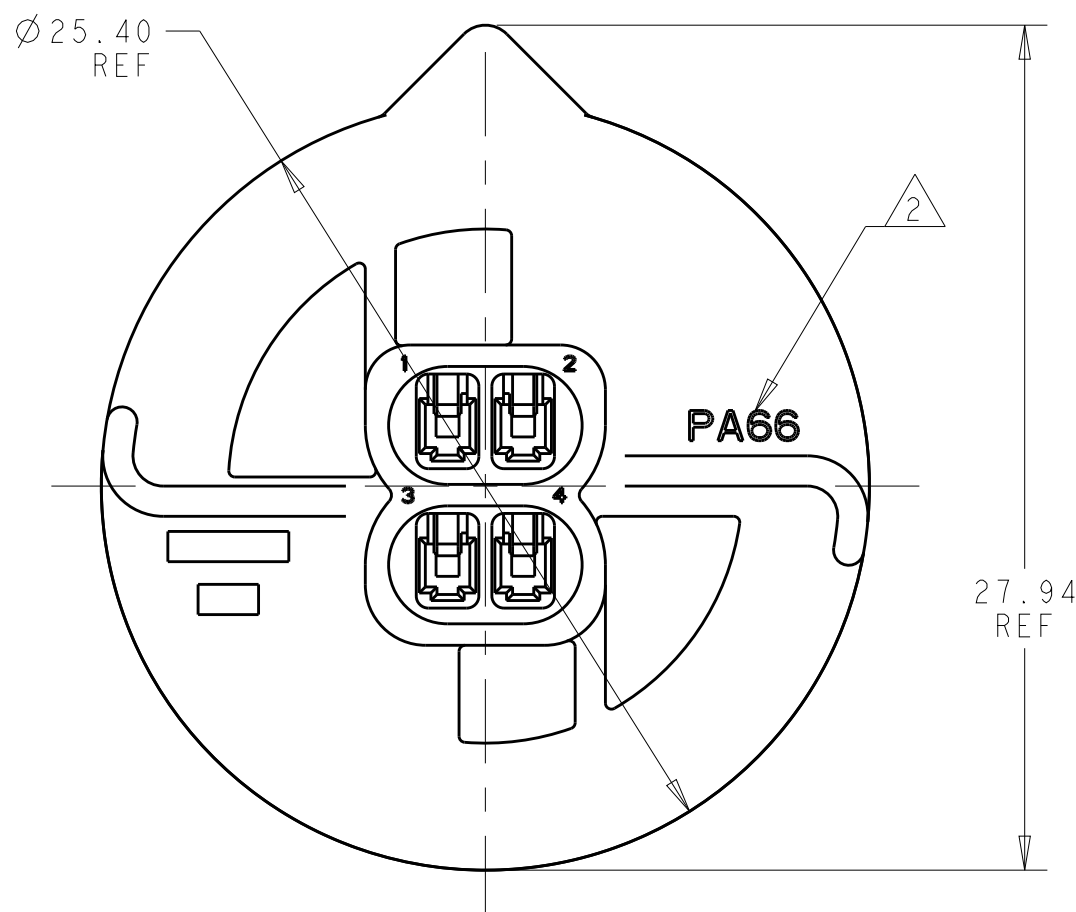
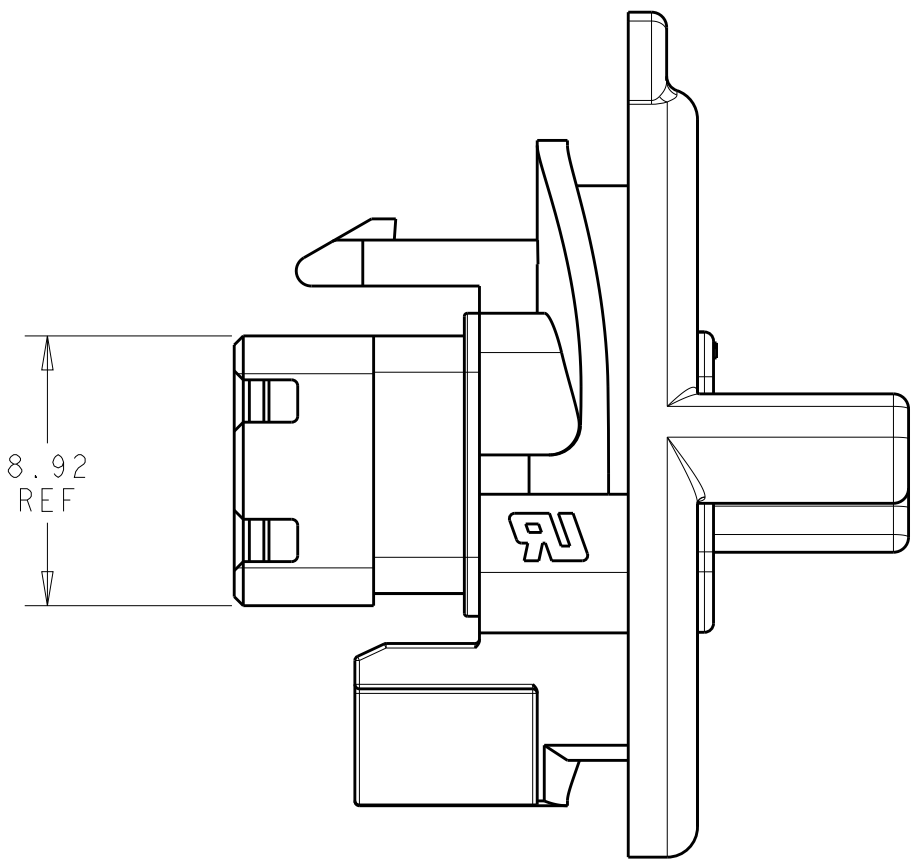
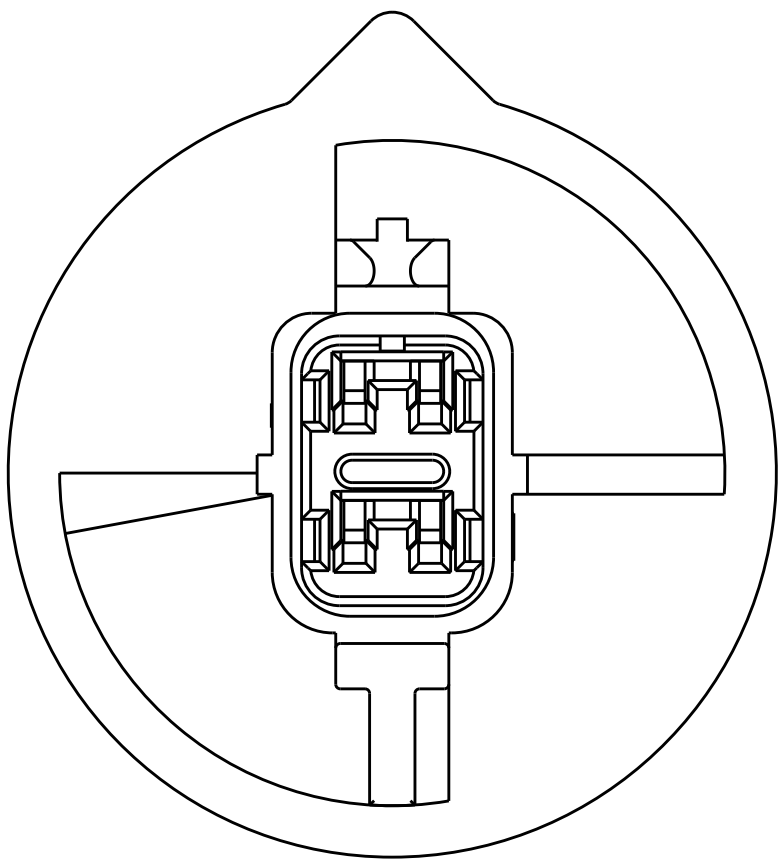
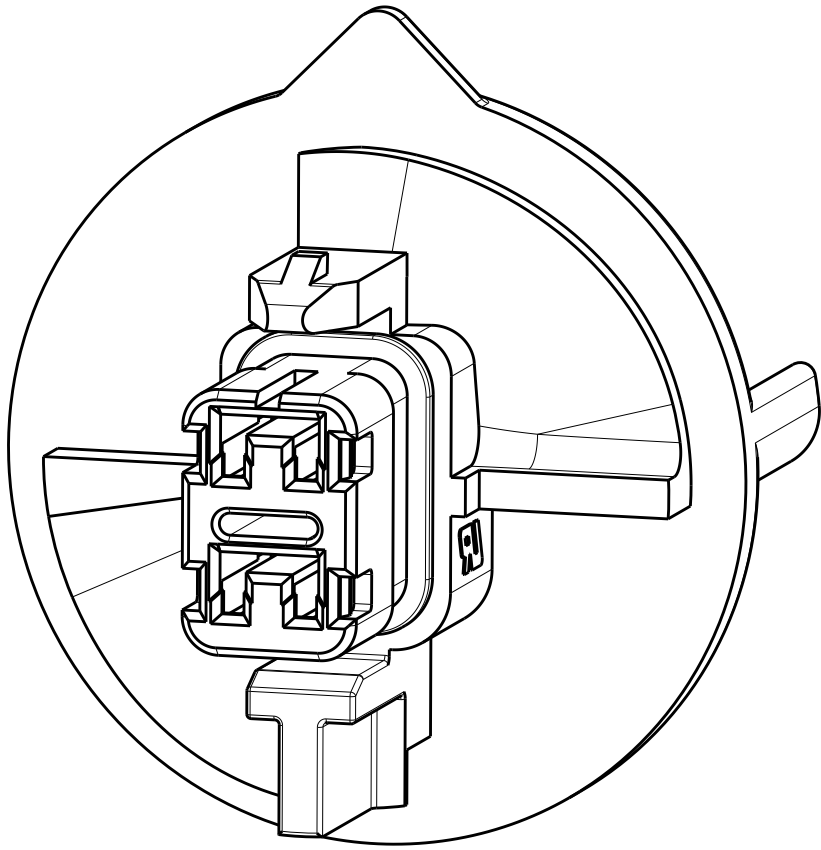
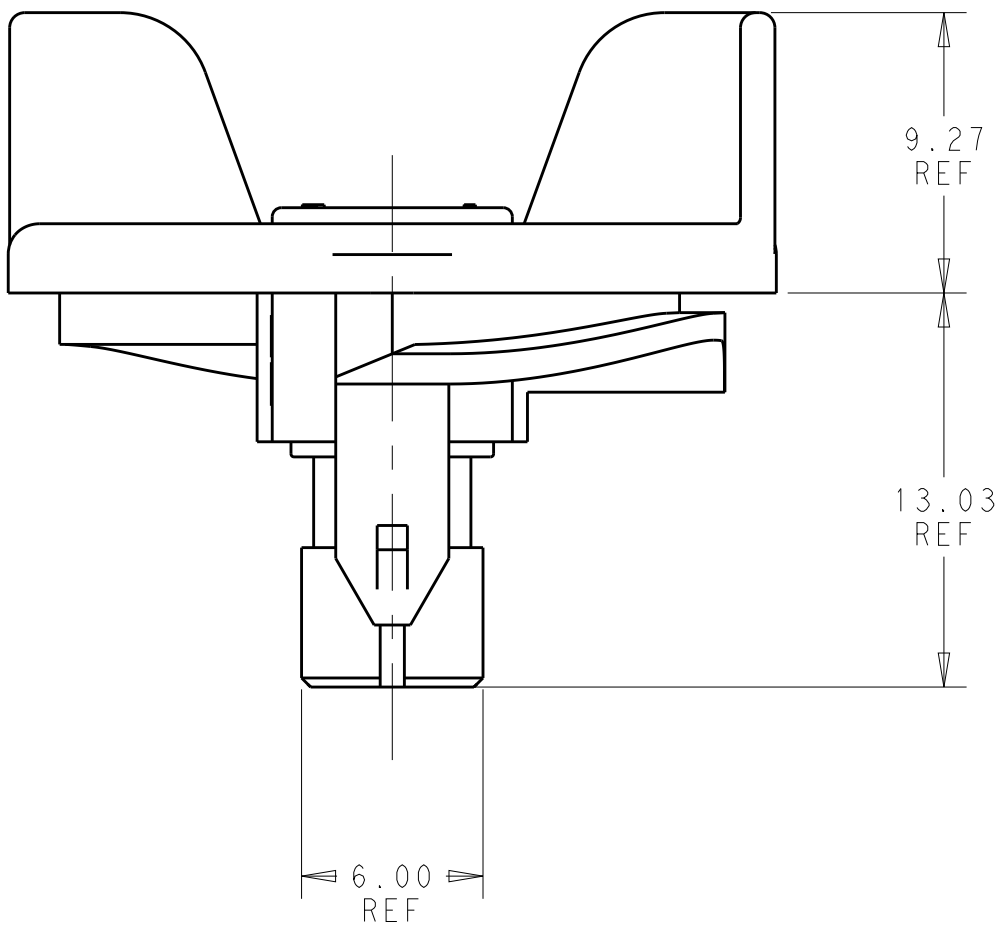
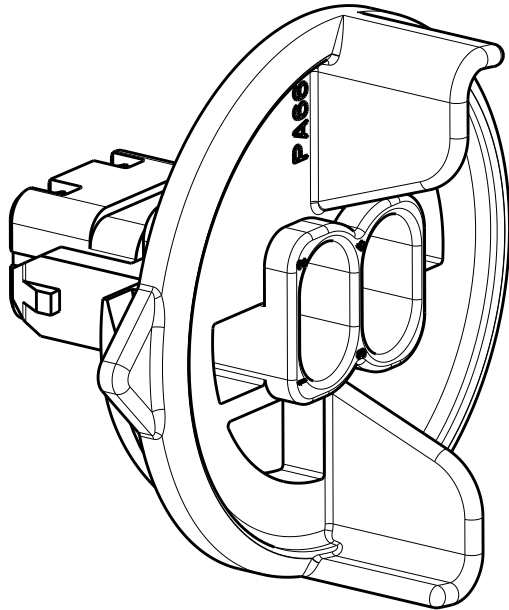
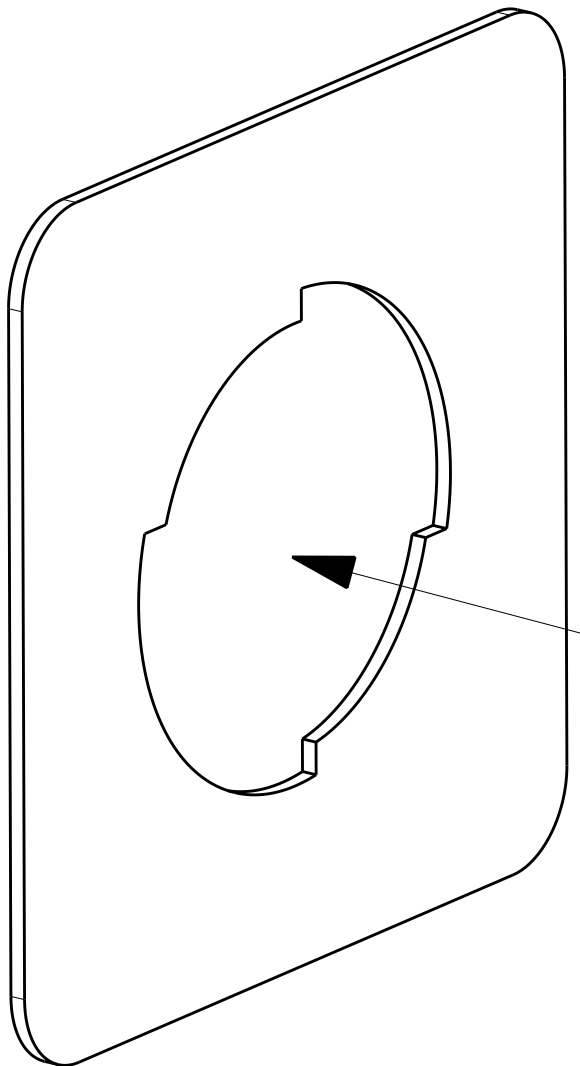
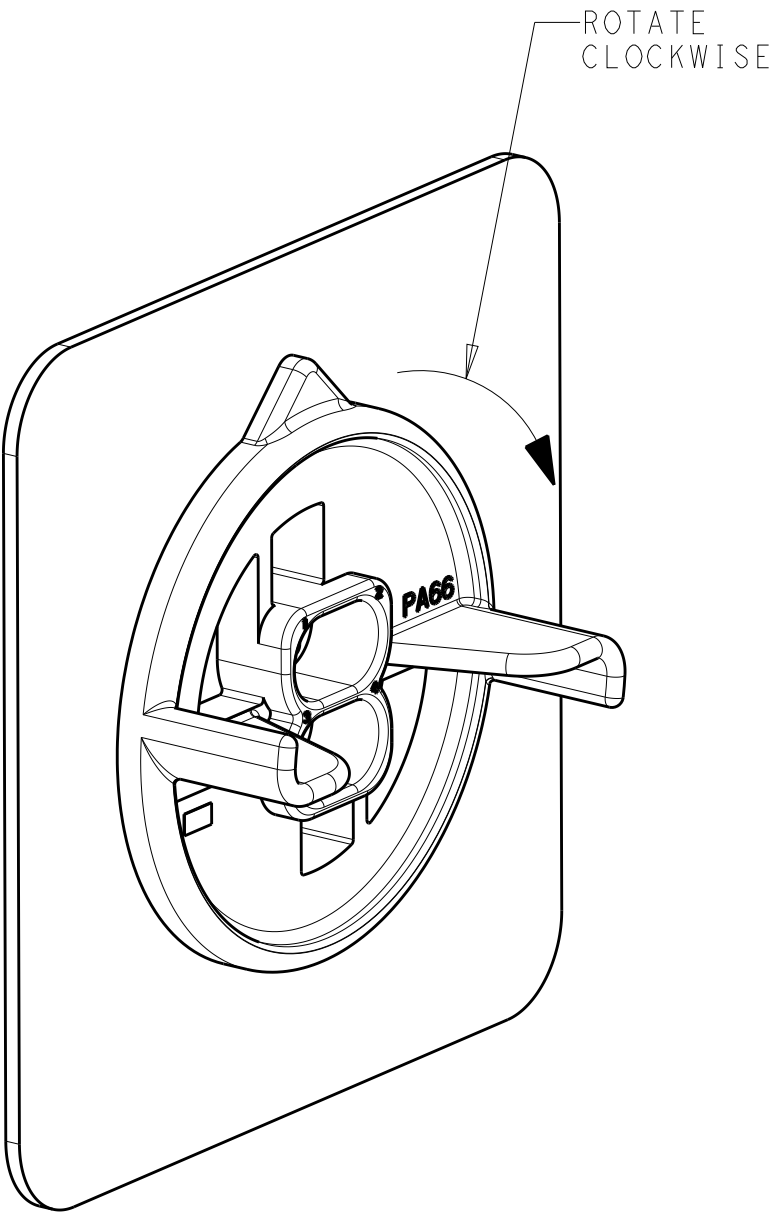
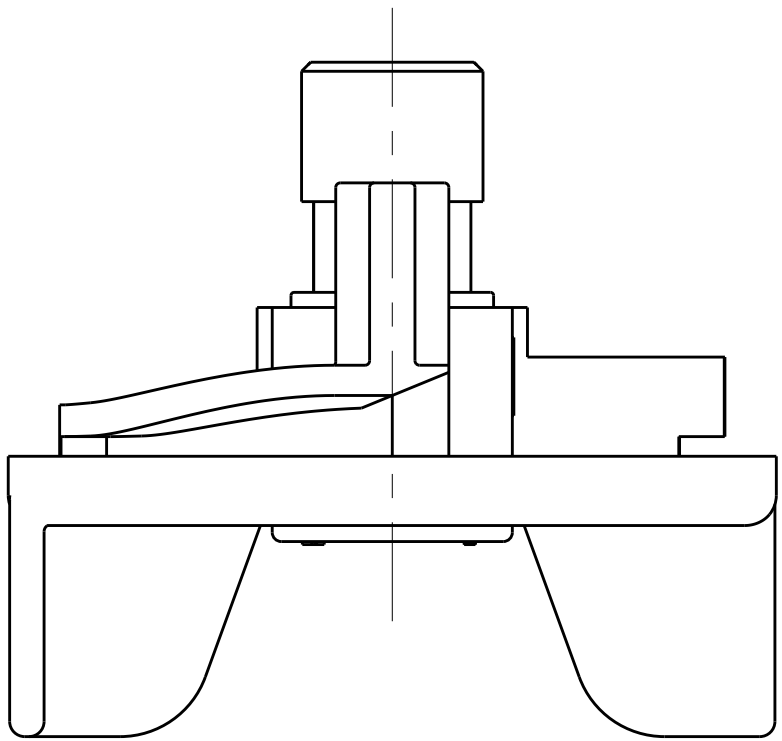


REVISIONS					
P	LTR	DESCRIPTION	DATE	DWN	APVD
	A	RELEASED PER ECO-20-008224	12JUN2020	BKW	SF

- 1 MATERIAL: PA66 COLOR: RED
- 2 MATERIAL MARK: PA66
3. RECOMMENDED PANEL THICKNESS: 0.75-1.36
4. PANEL MUST BE PUNCHED SO THAT THE HOUSING ENTERS THE PANEL IN THE SAME DIRECTION AS THE PUNCH.
5. PRELIMINARY PART - NOT RELEASED FOR PRODUCTION
THIS PRODUCT HAS NOT COMPLETED QUALIFICATION TESTING



RECOMMENDED PANEL CUT-OUT



ASSEMBLY PROCEDURE

2*2 (4 POSN)	2366251-4
POSN	PART NUMBER

THIS DRAWING IS A CONTROLLED DOCUMENT.		DWN B. WEAVER CHK S. FERNANDES APVD C. YI	05DEC2019 05DEC2019 05DEC2019	NAME PLUG HOUSING, TWIST N LOCK, SDL 2.5 WATERPROOF	
DIMENSIONS:		TOLERANCES UNLESS OTHERWISE SPECIFIED:		PRODUCT SPEC	
mm		0 PLC ±		108-143069	
		1 PLC ±		APPLICATION SPEC	
		2 PLC ±		114-143067	
		3 PLC ±		WEIGHT	
		4 PLC ±		CUSTOMER DRAWING	
		ANGLES		SCALE 4:1	
		FINISH		SHEET 1 OF 1	
				REV A	