

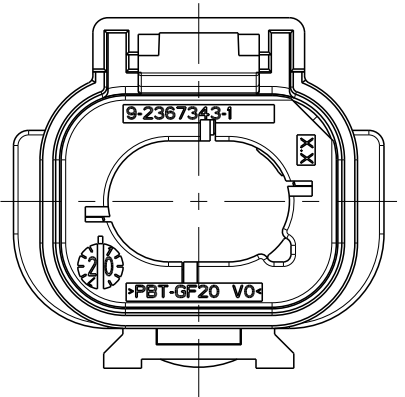
© 2020 TE Connectivity. All Rights Reserved.

CODING "A"  
Kodierung

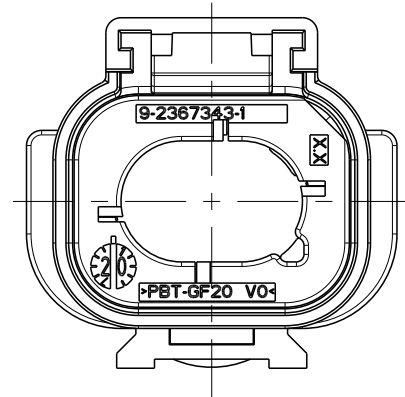
CODING "B"  
Kodierung

CODING "C"  
Kodierung

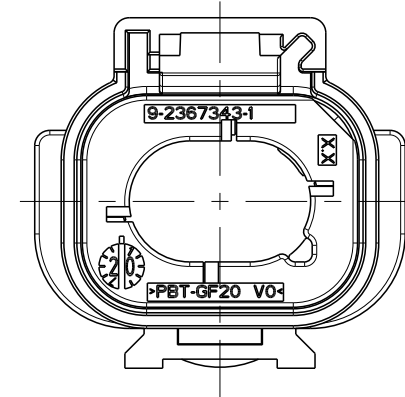
CODING "D"  
Kodierung



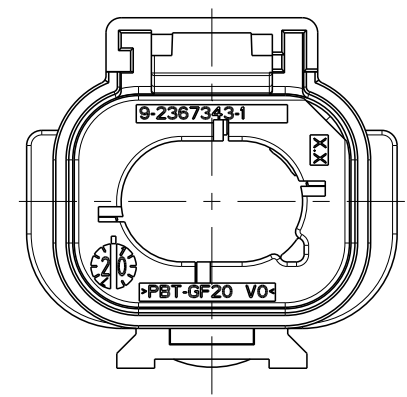
PN: 9-2367341-1



PN: 9-2367341-2

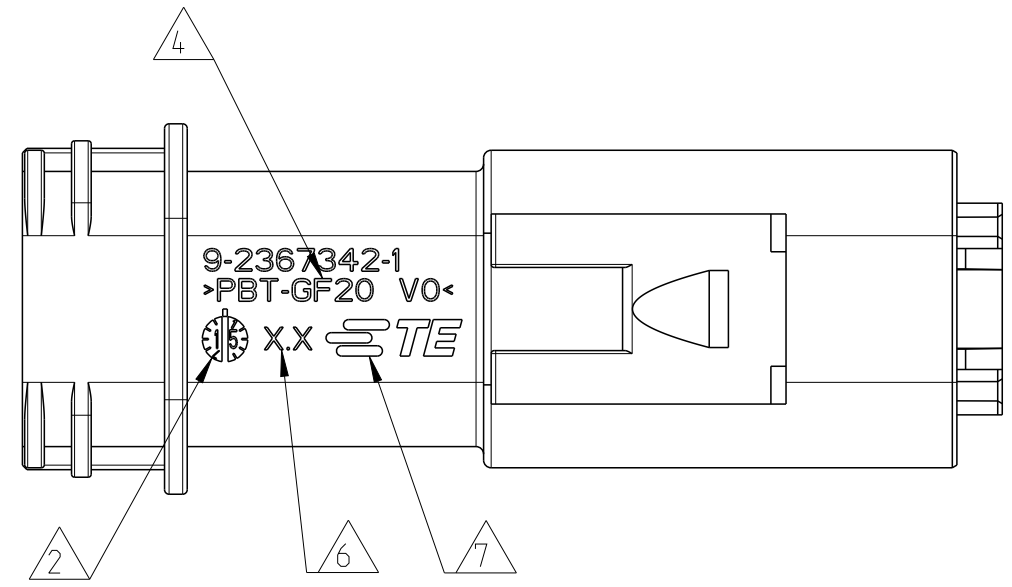
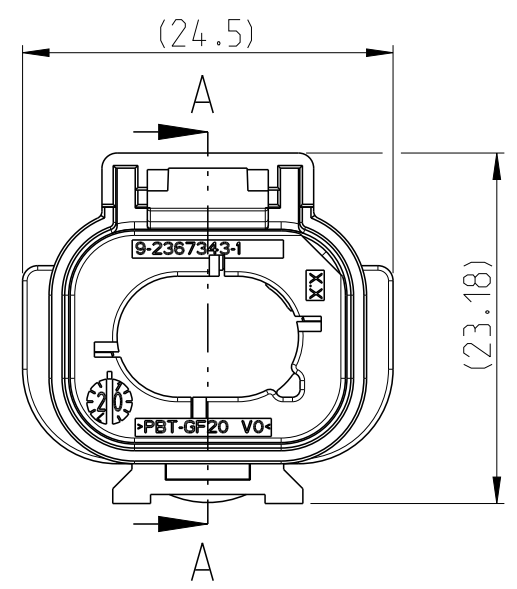


PN: 9-2367341-3

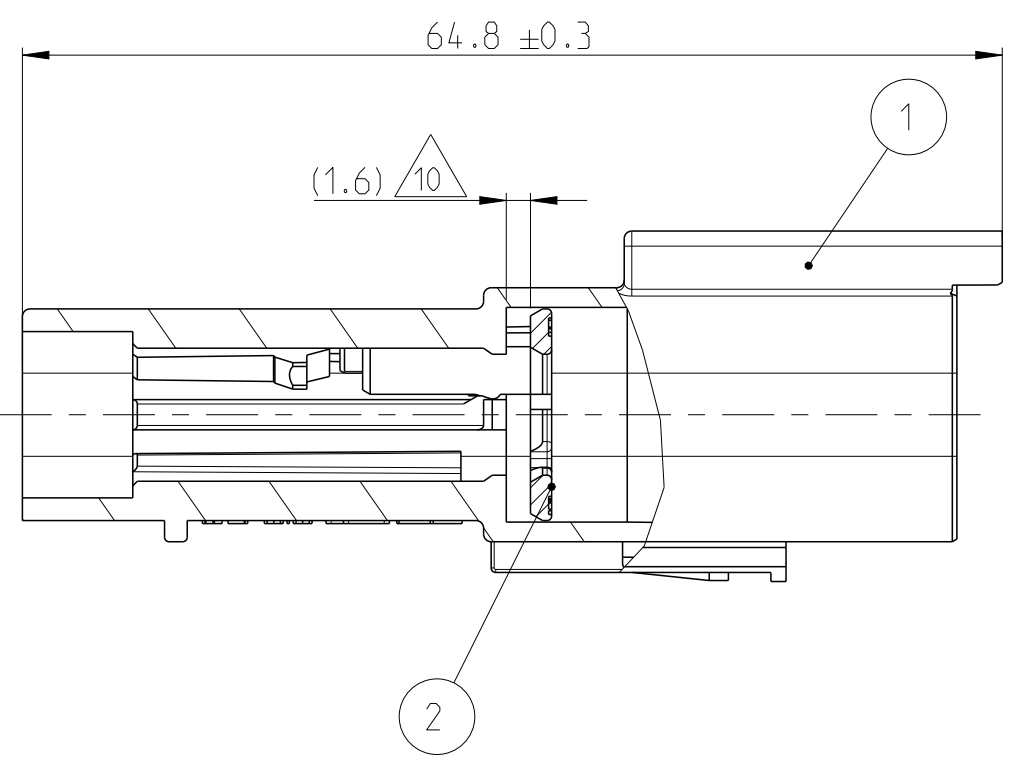


PN: 9-2367341-4

DELIVERY CONDITION:  
TPA IN PRE-LOCKED POSITION  
Lieferzustand:  
TPA in Vorraststellung



SECTION A-A



REVISIONS					
P	LTR	DESCRIPTION	DATE	DWN	APVD
B		Coding changed for better efficiency	18MAR2022	SH	JB
C		CODE C UPDATED AND REV MARKING REMOVED	14MAR2023	VP	VP
C1		DRAWING UPDATES FOR LASER MARKING REMOVAL	28JUN2023	VP	VP
D		As per PCN-24-211824	30APR2024	VP	VP

NOTES  
Bemerkungen

- 1 ~~TE ORDER NO.  
TE Bestell-Nr.~~
- 2 PRODUCTION DATE  
Produktionsdatum
- 3 ~~LETTER-INSERT FOR THE REVISION STATUS OF THE MOULD  
Schriftsatz fuer Aenderungszustand des Werkzeuges~~
- 4 MATERIAL MARKING ACCORDING TO VDA 260  
Werkstoffkennzeichnung nach VDA 260
- 5 TRAY PACKAGING  
Tray verpackung
- 6 MOULD CAVITY MARKING  
Nestmarkierung
- 7 TE LOGO  
TE Logo
- 8 SUITABLE COUNTERPART SEE DRAWING: 2367337  
passendes Gegenstueck siehe Zeichnung: 2367337
- 9 MATED WITH COVER SEE DRAWING: 2367344  
Passend zu Kappe siehe Zeichnung: 2367344
- 10 PRE-LOCK-POSITION  
Vorraststellung
- 11 SUITABLE SINGLE WIRE SEAL SEE DRAWING: 2367346  
passende Einzeldichtung siehe Zeichnung: 2367346
- 12 SUITABLE Clip SEE DRAWING: 1011-310-0205  
passende Befestigungsclip siehe Zeichnung: 1011-310-0205

ITEM NO	DESCRIPTION	COLOUR	MATERIAL
1	Tab HSG. CODE "A" Stiftgehäuse, Kod. "A"	BLACK schwarz	PBT-GF20 / V-0
1	Tab HSG. CODE "B" Stiftgehäuse, Kod. "B"	GREY grau	PBT-GF20 / V-0
1	Tab HSG. CODE "C" Stiftgehäuse, Kod. "C"	GREEN gruen	PBT-GF20 / V-0
1	Tab HSG. CODE "D" Stiftgehäuse, Kod. "D"	BLUE blau	PBT-GF20 / V-0
2	TPA	BLACK schwarz	PBT-GF20 / V-0

TE ORDER-NO. TE Bestell-Nr.	REV.	CODE Kodierung	QUANTITY Stueck	ITEM NO ASSY
9-2367341-4	D	D	1	4
9-2367341-3	D	C	1	3
9-2367341-2	D	B	1	2
9-2367341-1	D	A	1	1

THIS DRAWING IS A CONTROLLED DOCUMENT.		DWN K. Schang 26MAR2020
DIMENSIONS: mm		CHK S. Helm 27MAR2020
TOLERANCES UNLESS OTHERWISE SPECIFIED:		APVD J. Barth 27MAR2020
0 PLC	±	PRODUCT SPEC
1 PLC	±	108-94825
2 PLC	±	APPLICATION SPEC
3 PLC	±	114-94706
4 PLC	±	WEIGHT
ANGLES	±	10 g
FINISH	-	CUSTOMER DRAWING
	-	SCALE 2:1

<b>STE</b> TE Connectivity	
NAME TAB DT Highspeed Assembly Tab DT Highspeed Baugruppe	
SIZE A2	CAGE CODE 100779
DRAWING NO C-2367341	RESTRICTED TO -
SHEET 1 OF 1	REV D