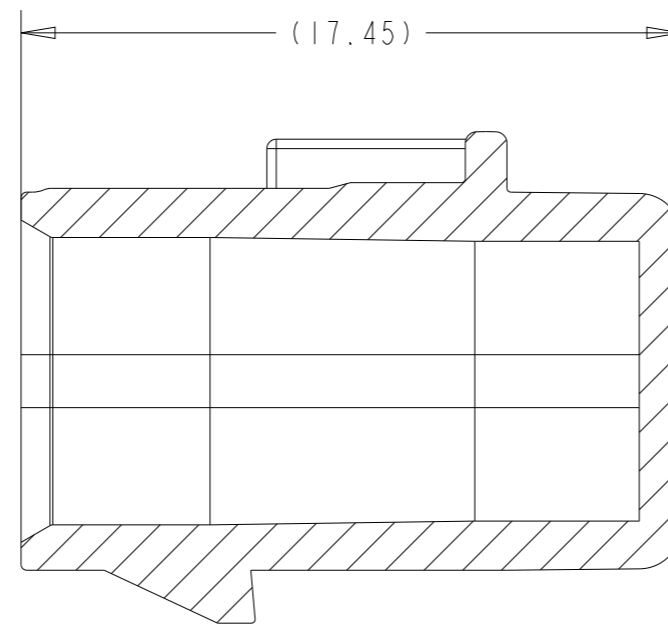
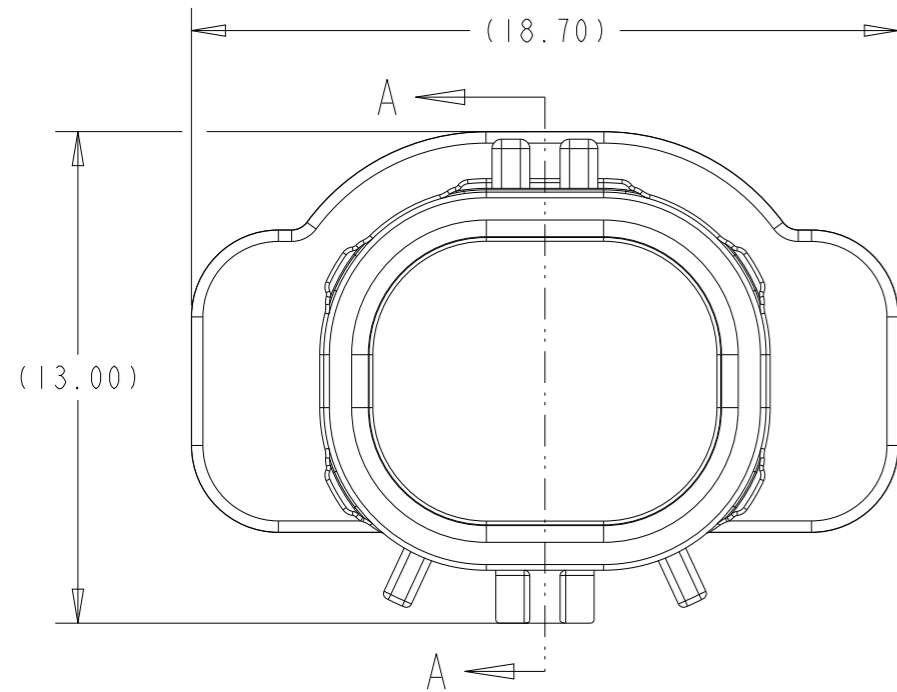


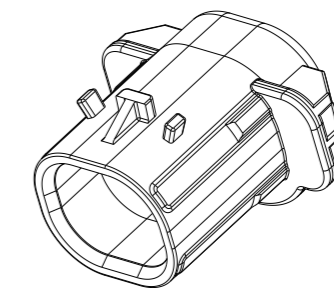
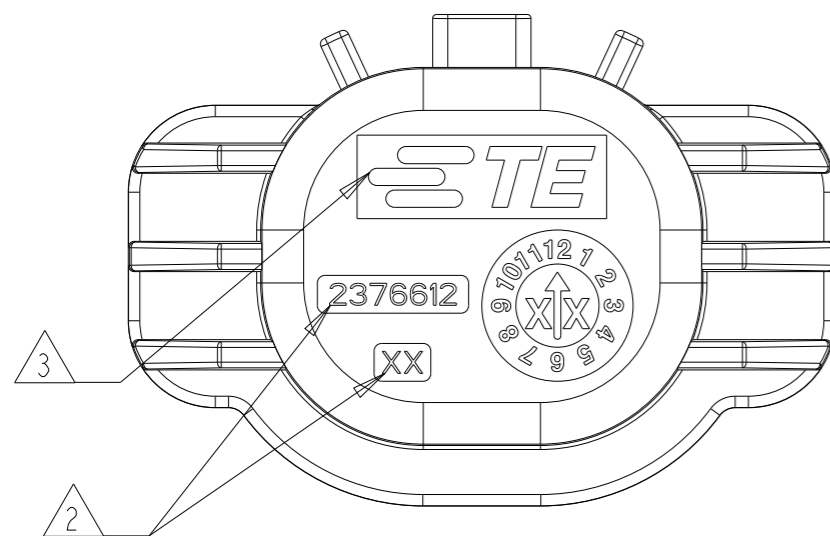
P	LTR	DESCRIPTION	DATE	DWN	APVD
		SEE SHEET 2	-	-	-



SECTION A-A

NOTE:

- 1 MATERIAL: PBT GF30
COLOR: BLACK
NO REGRIND ALLOWED
- 2 TE PART NUMBER, MOLD CAVITY ID AND REVISION CHARACTERS RAISED 0.20MM IN A RECESSED PAD DEEPENS TO 0.25MM APPROXIMATE AREA AS SHOWN.
- 3 TE CONNECTIVITY (TE) LOGO, TE P/N 1621426-8 PER TEC-202-36, USING SPI-SPE #3 FINISH PER DME SPEC IN APPROXIMATE AREA SHOWN. TE LOGO MUST BE CLEAR AND LEGIBLE
- 4 THIS PART MATES WITH 2-WAY PLUG, P/N 2292906-1, -2.
- 5 OPERATING TEMPERATURE: -40 TO +125°C



SCALE 2:1

2376612-1	932	1.40	BLACK	1
PART NO	VOLUME (mm ³)	WEIGHT (g)	COLOUR	ITEM NO

THIS DRAWING IS A CONTROLLED DOCUMENT.		DWN DEEPAK A R 31AUG2020	TE Connectivity	
DIMENSIONS: mm		CHK ANIROODH S 01SEP2020		
TOLERANCES UNLESS OTHERWISE SPECIFIED: 0 PLC ±. 1 PLC ±0.1 2 PLC ±0.01 3 PLC ±0.001 4 PLC ±0.0001 ANGLES ±.		APVD J BARTH 02SEP2020		
MATERIAL -		FINISH -		
NAME 2 POS ENETSEAL BLIND CAP SIZE A3 CAGE CODE 00779 DRAWING NO C-2376612		PRODUCT SPEC -	RESTRICTED TO -	
APPLICATION SPEC - WEIGHT -		CUSTOMER DRAWING SCALE 5:1 SHEET 1 OF 2 REV A		

P	LTR	DESCRIPTION	DATE	DWN	APVD
		SEE SHEET 2	-	-	

2376612-C

2 POS ENETSEAL BLIND CAP

STOCK DISPOSITION

A: CONTINUE AS IS D: USE OLD FIRST
 B: REWORK E: PARTS TO CONFORM
 C: SCRAP F: OTHER

REVISION HISTORY

DATE	REV	CHANGES	REASON	APPROVAL	INVENTORY (A,B,C,D,E,F)	WORK IN PROCESS (A,B,C,F)	SUPPLIER ORDERS (A,E,F)	OPEN CUST ORDERS (A,E,F)
30AUG2020	I	INITIAL RELEASE	-	JB	-	-	-	-

THIS DRAWING IS A CONTROLLED DOCUMENT.

DIMENSIONS: mm	TOLERANCES UNLESS OTHERWISE SPECIFIED: 0 PLC ±. 1 PLC ±0.1 2 PLC ±0.01 3 PLC ±0.001 4 PLC ±0.0001 ANGLES ±.
MATERIAL -	FINISH -

DWN DEEPAK A R	31AUG2020
CHK ANIROODH S	01SEP2020
APVD J BARTH	02SEP2020
PRODUCT SPEC	-
APPLICATION SPEC	-
WEIGHT	-
CUSTOMER DRAWING	



TE Connectivity

NAME 2 POS ENETSEAL BLIND CAP		RESTRICTED TO -	
SIZE A3	CAGE CODE 00779	DRAWING NO C-2376612	RESTRICTED TO -
SCALE 5:1		SHEET 2 OF 2	REV A