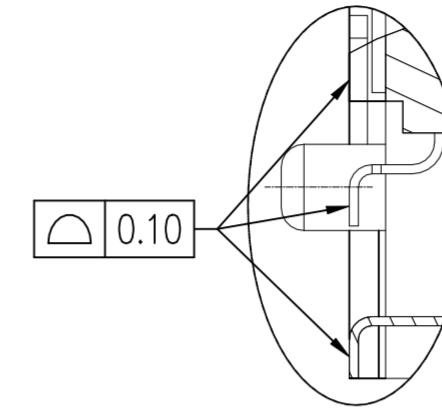
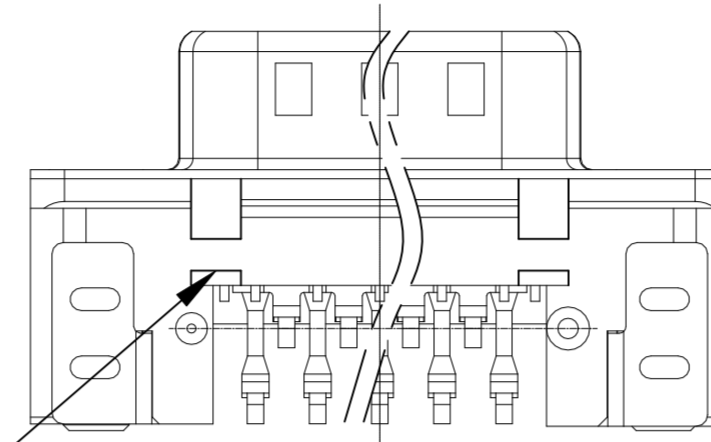
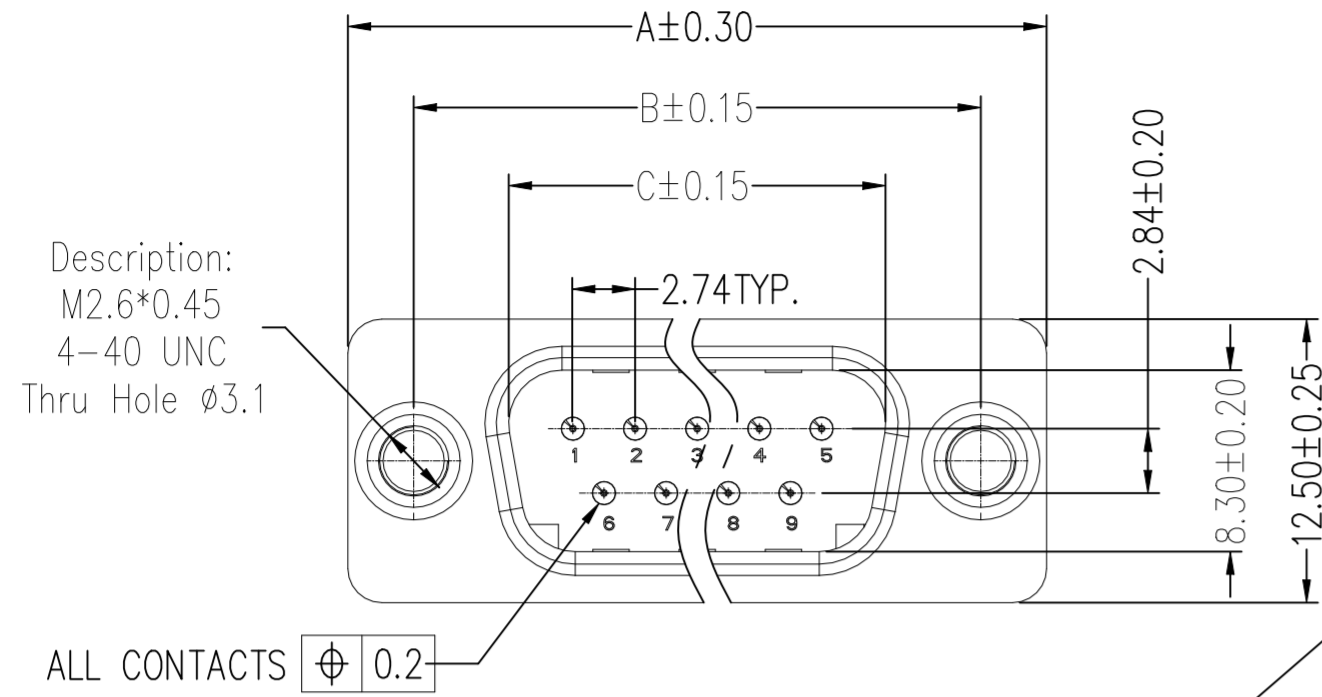
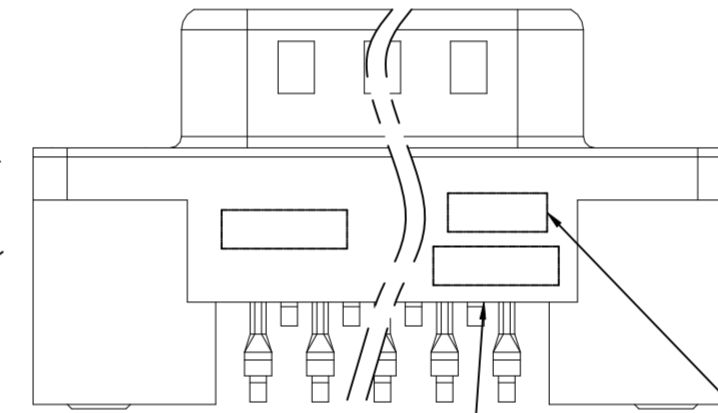
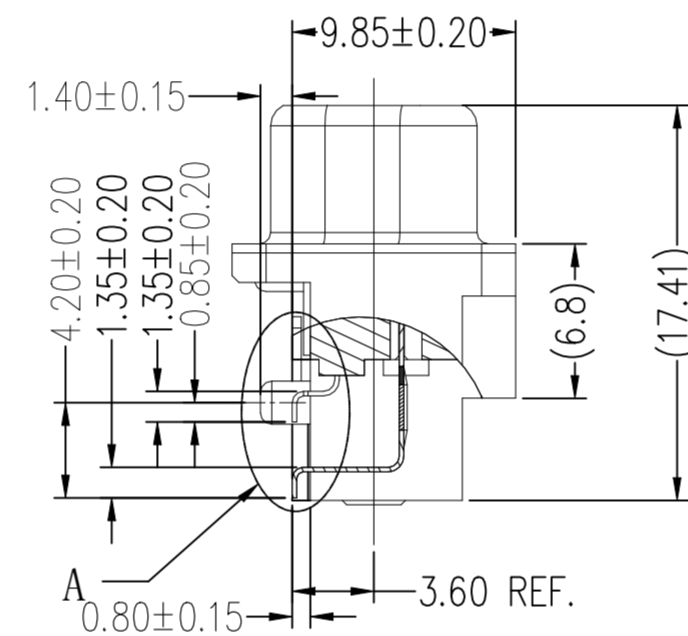
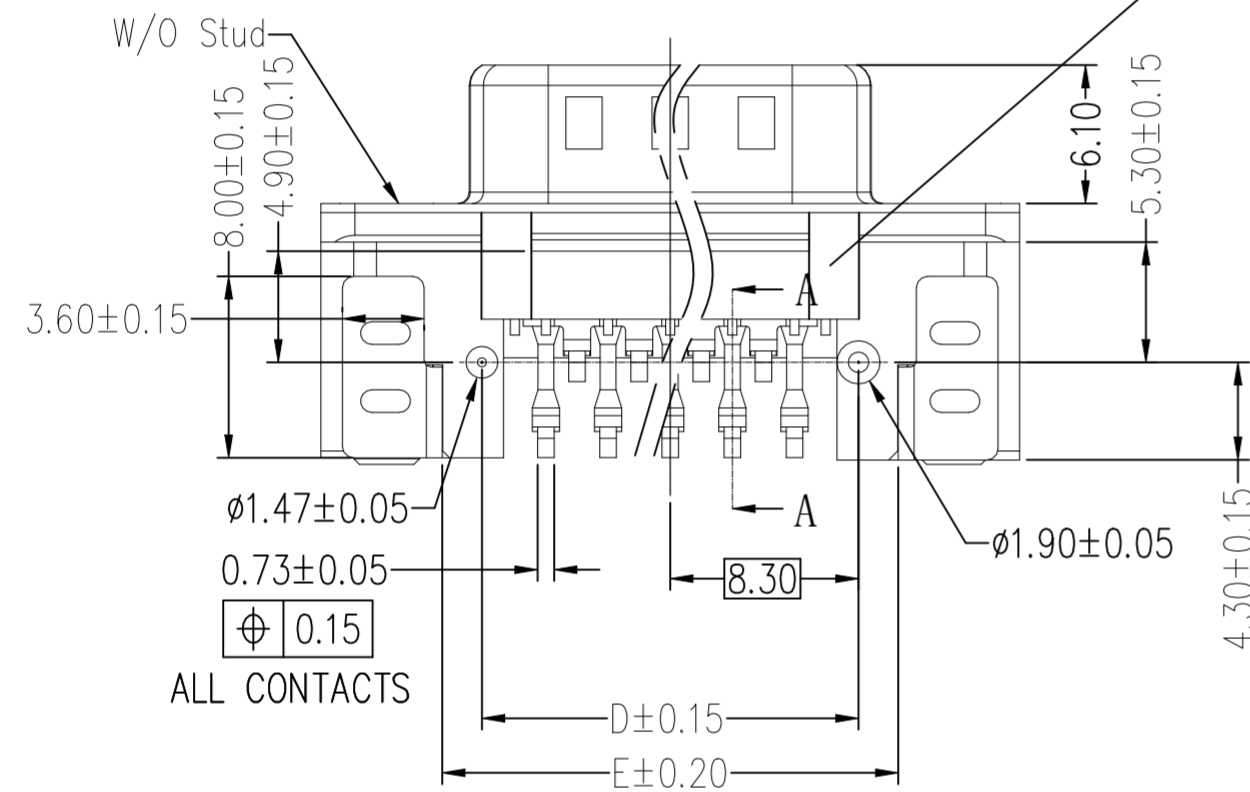


REVISIONS					
P	LTR	DESCRIPTION	DATE	DWN	APVD
A1		REVISED PER ECN-22-178817	11OCT2022	PT	SZ

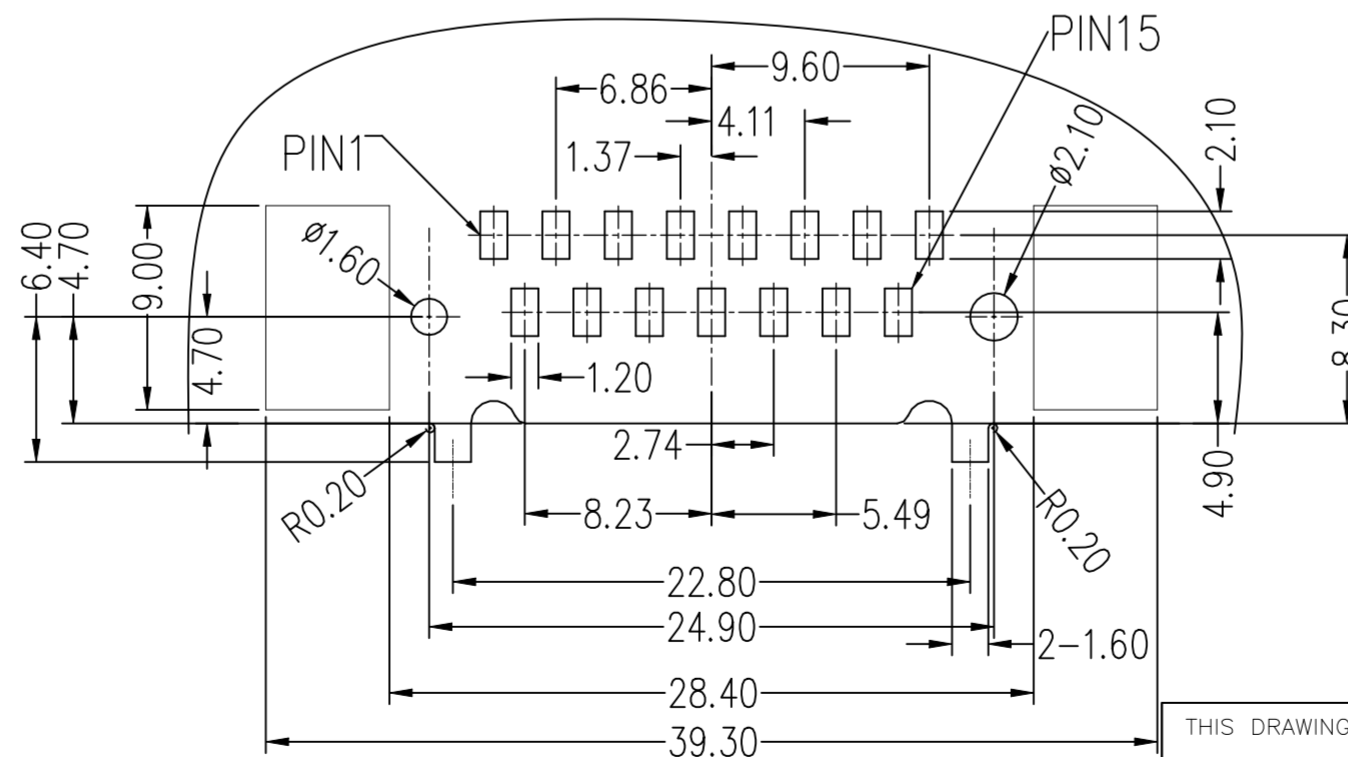
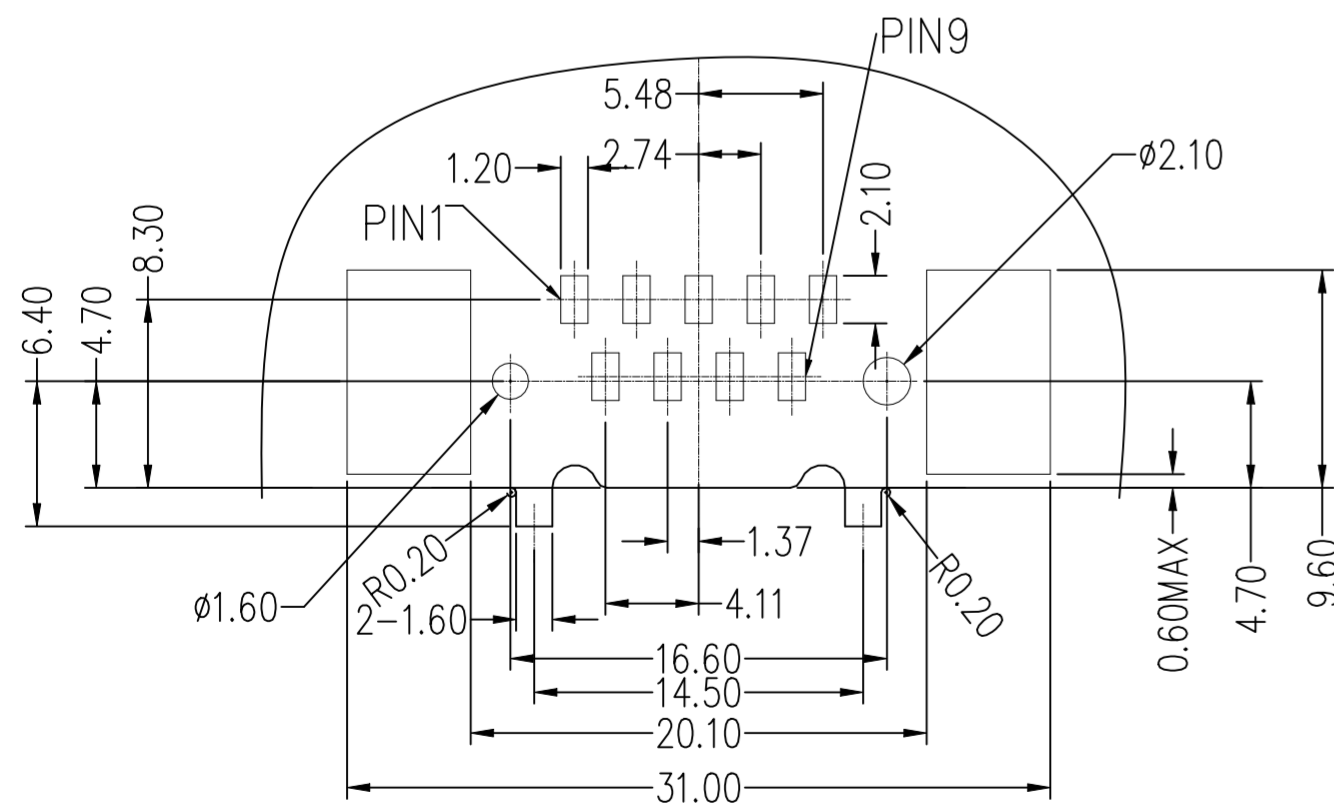


- NOTES:
- 1, Current Rating: 3.0A
 - 2, Contact Resistance: 25mΩ Max
 - 3, Withstand Voltage: 500V AC
 - 4, Insulation Resistance: 1000MΩ Min
 - 5, Operation Temperature: -55°C to +105°C
 - 6, Insulator Material:
High temperature plastics, UL94V-0, Black
 - 7, Contact Material: Copper alloy
 - 8, Contact Plating:
30u" Gold on contact area,
120~200u" Tin on solder area,
50u" Nickel underplating overall.
- Shell: Steel, Nickel plated
Revit/Fixed Plate: Brass, Tin over Nickel plated
- Recommended Process:
IR soldering, Peak temperature: 260±5°C, 5s



DATE CODE (YYWW)
TE PART NO (X-2394033-X)

15P	39.20	33.32	25.25	24.90	28.40
9P	30.80	25.00	16.90	16.60	20.10
PINS	A	B	C	D	E



15P	M2.6*0.45	3-2394033-3	4-2394033-3
	4-40 UNC	3-2394033-2	4-2394033-2
	Thru Hole ø3.1	3-2394033-1	4-2394033-1
	M2.6*0.45	1-2394033-3	2-2394033-3
9P	4-40 UNC	1-2394033-2	2-2394033-2
	Thru Hole ø3.1	1-2394033-1	2-2394033-1
Pos.	DESCRIPTION	REEL PACKING	TRAY PACKING

w/o Stud

RECOMMENDED P.C.B LAYOUT For 9 position
(COMPONENT SIDE)

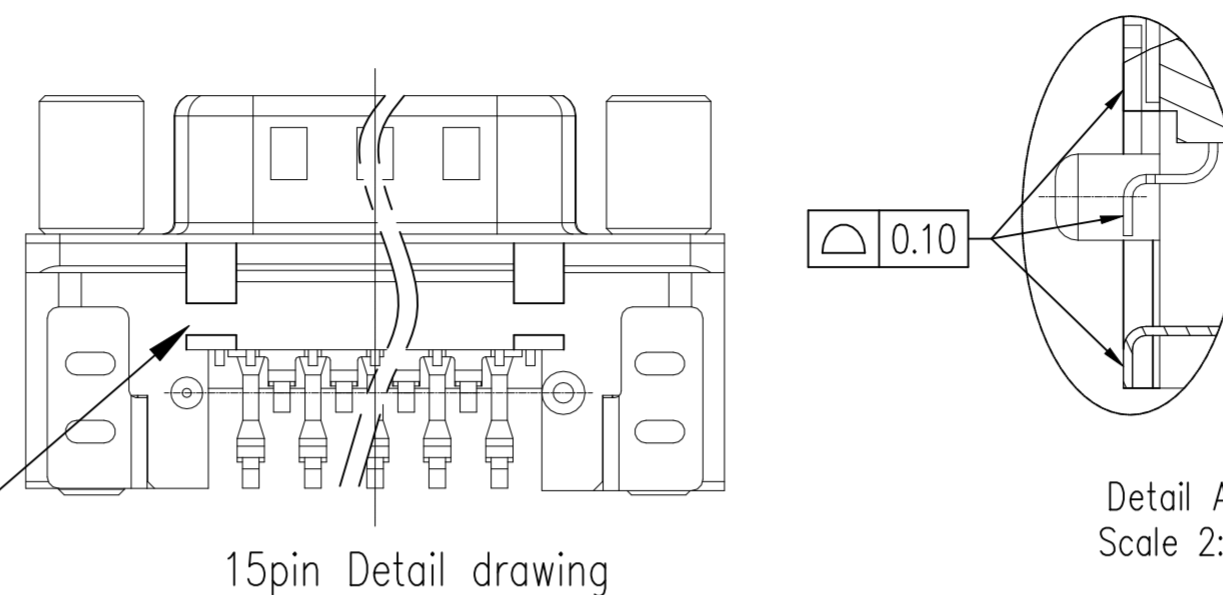
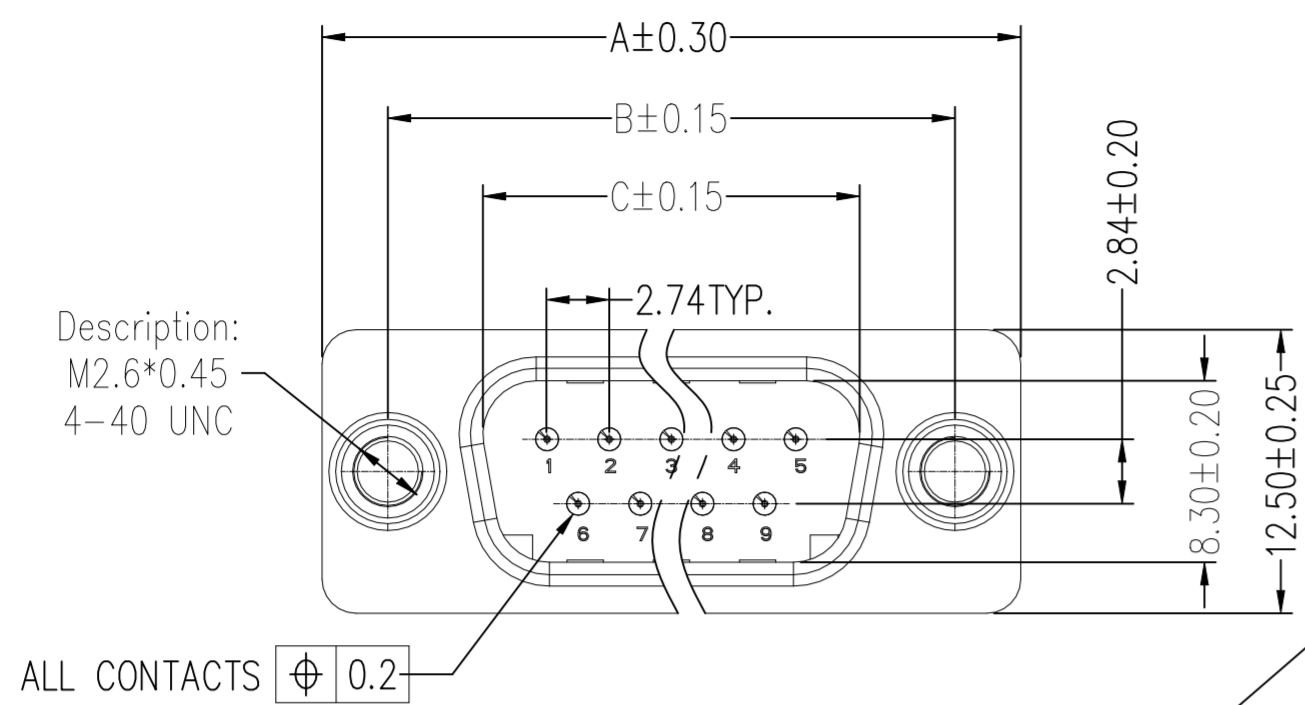
RECOMMENDED P.C.B LAYOUT For 15 position
(COMPONENT SIDE)

RECOMMENDED PCB LAYOUT 1
(COMPONENT SIDE VIEW)

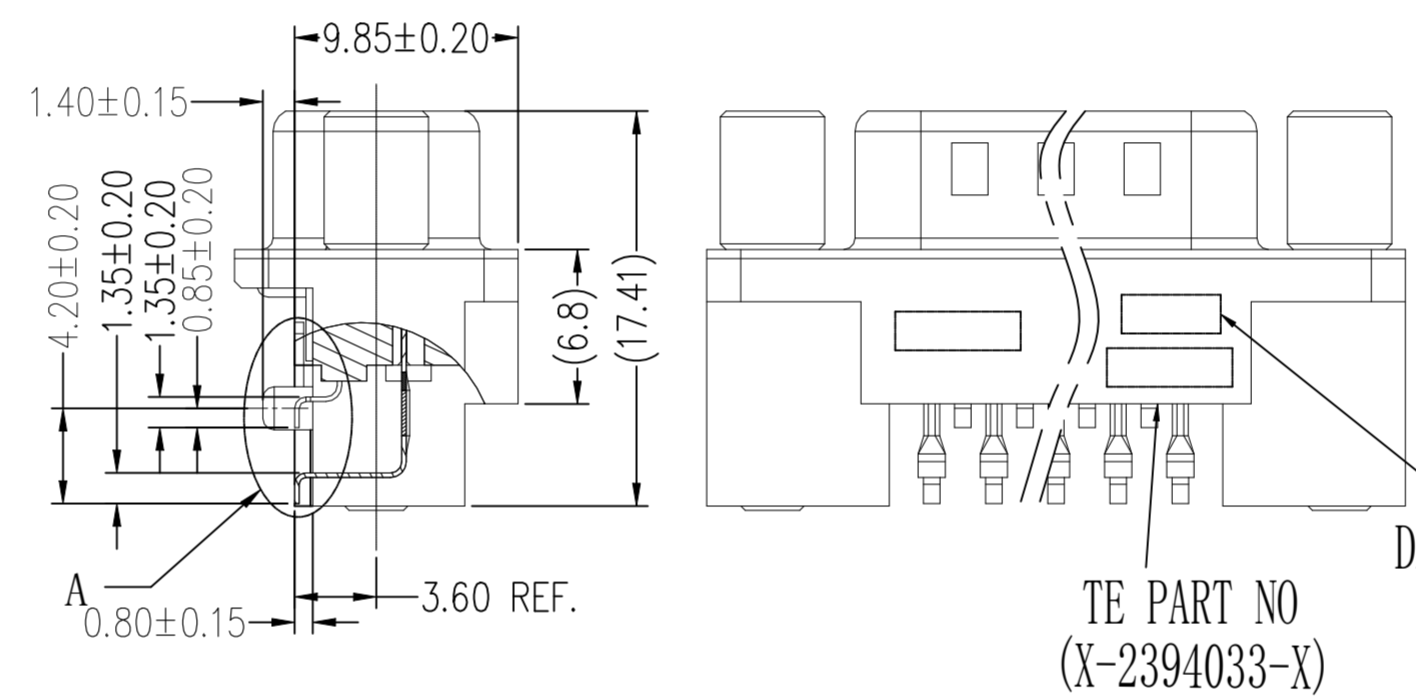
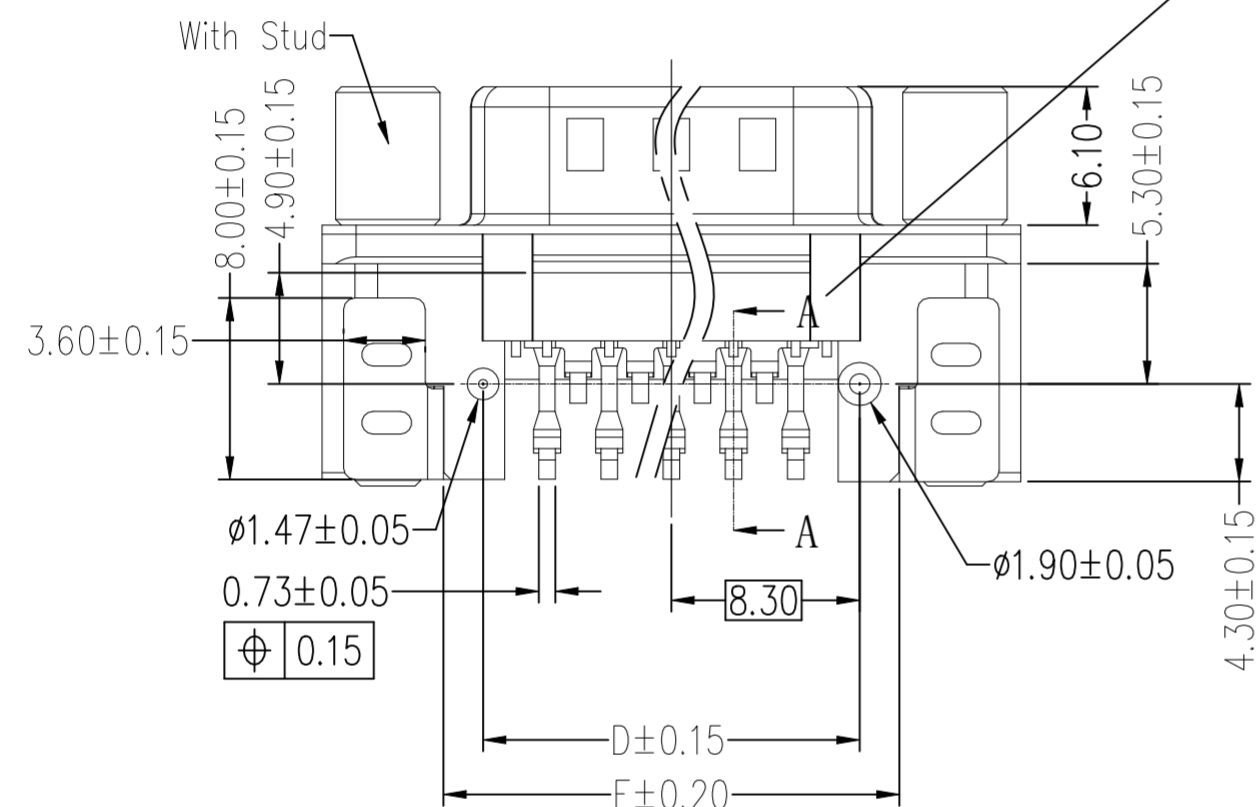
THIS DRAWING IS A CONTROLLED DOCUMENT.

DIMENSIONS:	TOLERANCES UNLESS OTHERWISE SPECIFIED:	DWN	-
mm	0 PLC ± -	CHK	-
	1 PLC ± -	APVD	-
	2 PLC ± 0.25	PRODUCT SPEC	108-94000
	3 PLC ± -	APPLICATION SPEC	-
	4 PLC ± -	NAME	TE Connectivity
	ANGLES ± -	SIZE	A2
MATERIAL	FINISH	CAGE CODE	00779
		DRAWING NO	C=2394033
		RESTRICTED TO	-
		WEIGHT	0
		CUSTOMER DRAWING	SCALE 1:1 SHEET 1 of 5 REV A1

P	LTR	DESCRIPTION	DATE	DWN	APVD
-	-	SEE SHEET 1	-	-	-



- NOTES:
- 1,Current Rating: 3.0A
 - 2,Contact Resistance: 25mΩ Max
 - 3,Withstand Voltage: 500V AC
 - 4,Insulation Resistance: 1000MΩ Min
 - 5,Operation Temperature: -55°C to +105°C



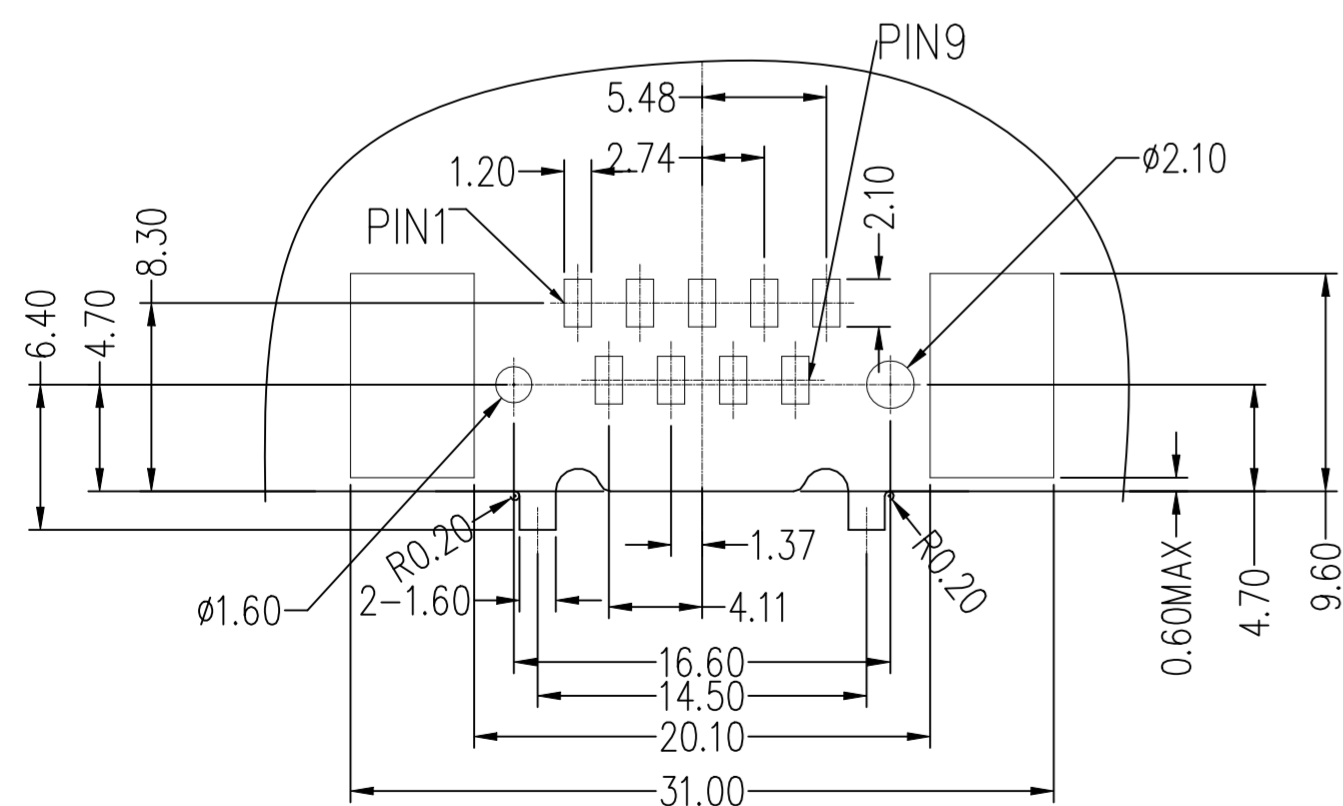
- 6,Insulator Material: High temperature plastics, UL94V-0, Black
 - 7,Contact Material: Copper alloy
 - 8,Contact Plating: 30u" Gold on contact area, 120~200u" Tin on solder area, 50u" Nickel underplating overall.
- Shell: Steel, Nickel plated
 Revit/Fixed Plate: Brass, Tin over Nickel plated
 Stud: Brass, Nickel plated

Recommended Process:
 IR soldering, Peak temperature: 260±5°C, 5s

DATE CODE (YYWW)

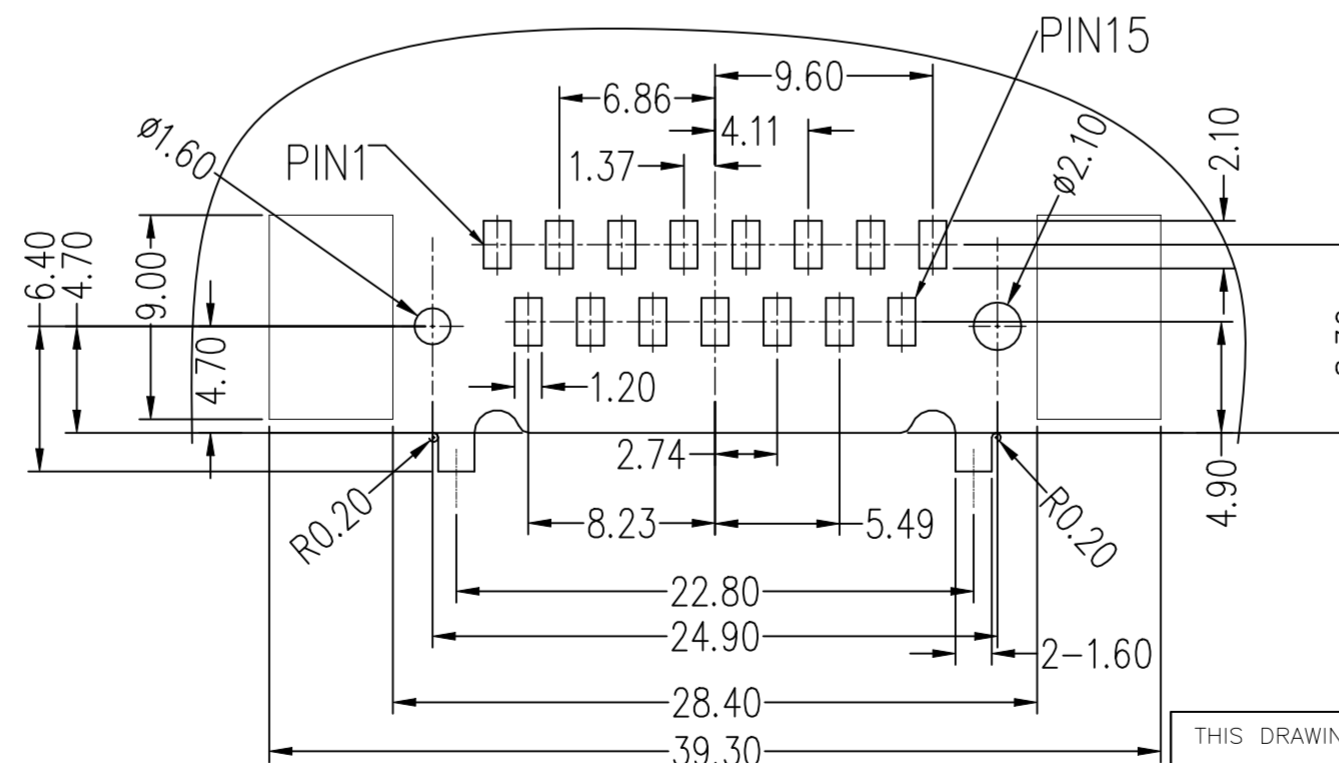
TE PART NO (X-2394033-X)

15P	39.20	33.32	25.25	24.90	28.40
9P	30.80	25.00	16.90	16.60	20.10
PINS	A	B	C	D	E



RECOMMENDED P.C.B LAYOUT For 9 position (COMPONENT SIDE)

RECOMMENDED PCB LAYOUT 1 (COMPONENT SIDE VIEW)



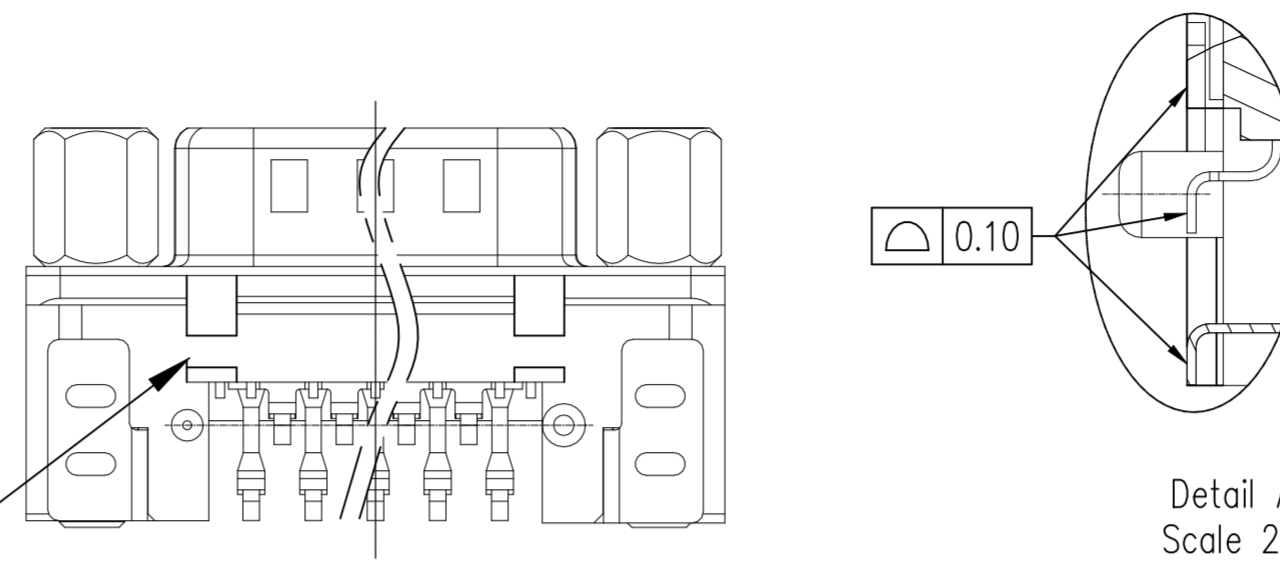
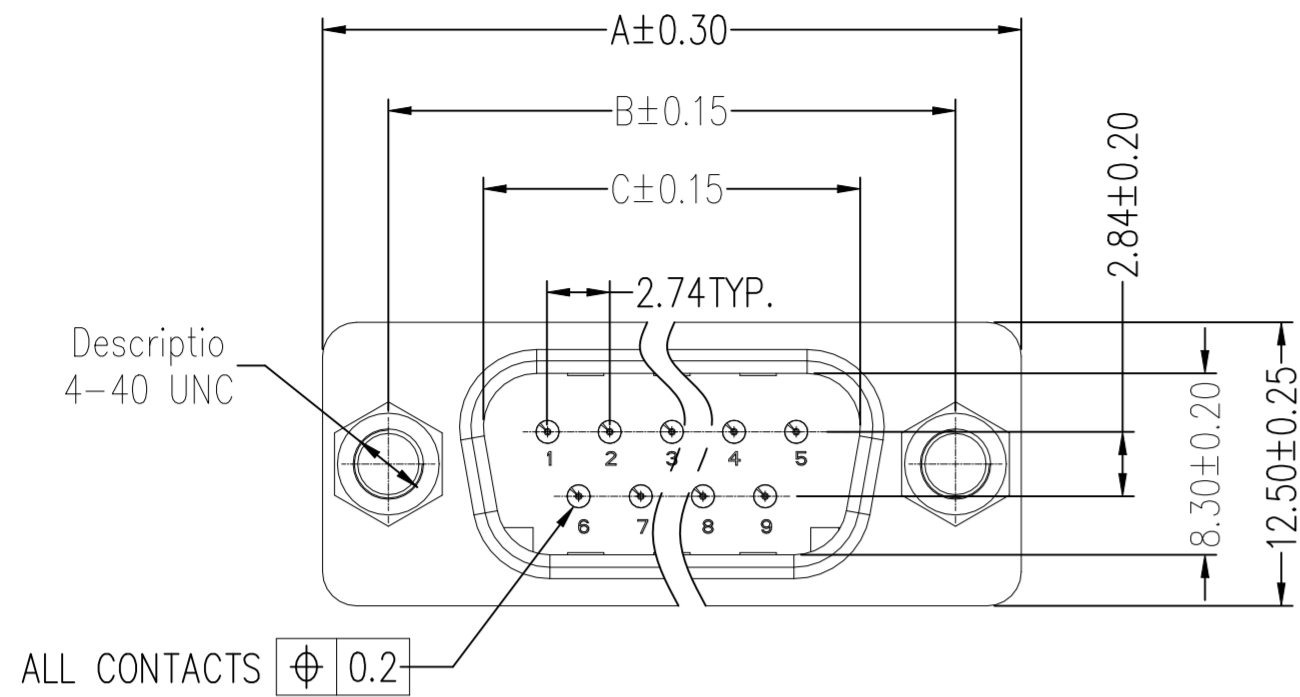
RECOMMENDED P.C.B LAYOUT For 15 position (COMPONENT SIDE)

w/ Stud	15P	M2.6*0.45	3-2394033-5	4-2394033-5
	9P	4-40 UNC	3-2394033-4	4-2394033-4
Pos.	9P	M2.6*0.45	1-2394033-5	2-2394033-5
	4-40 UNC	1-2394033-4	2-2394033-4	
	DESCRIPTION	REEL PACKING	TRAY PACKING	

PRODUCT FAMILY TABLE

THIS DRAWING IS A CONTROLLED DOCUMENT.		DWN	-	TE Connectivity NAME: D-sub Header, Plug, SMT	
DIMENSIONS: mm		CHK	-		
TOLERANCES UNLESS OTHERWISE SPECIFIED:		APVD	-		
0 PLC ± - 1 PLC ± - 2 PLC ± 0.25 3 PLC ± - 4 PLC ± - ANGLES ± -		PRODUCT SPEC	-		
MATERIAL	FINISH	APPLICATION SPEC	-	SIZE	CAGE CODE
-	-	WEIGHT	-	A2	00779
CUSTOMER DRAWING			SCALE	1:1	SHEET
					2 of 5
					REV
					A1

REVISIONS					
P	LTR	DESCRIPTION	DATE	DWN	APVD
-	-	SEE SHEET 1	-	-	-



15pin Detail drawing

Detail A Scale 2:1

NOTES:

- 1,Current Rating: 3.0A
- 2,Contact Resistance: 25mΩ Max
- 3,Withstand Voltage: 500V AC
- 4,Insulation Resistance: 1000MΩ Min
- 5,Operation Temperature: -55°C to +105°C

6,Insulator Material:

High temperature plastics, UL94V-0, Black

7,Contact Material: Copper alloy

8,Contact Plating:

- 30u" Gold on contact area,
- 120~200u" Tin on solder area,
- 50u" Nickel underplating overall.

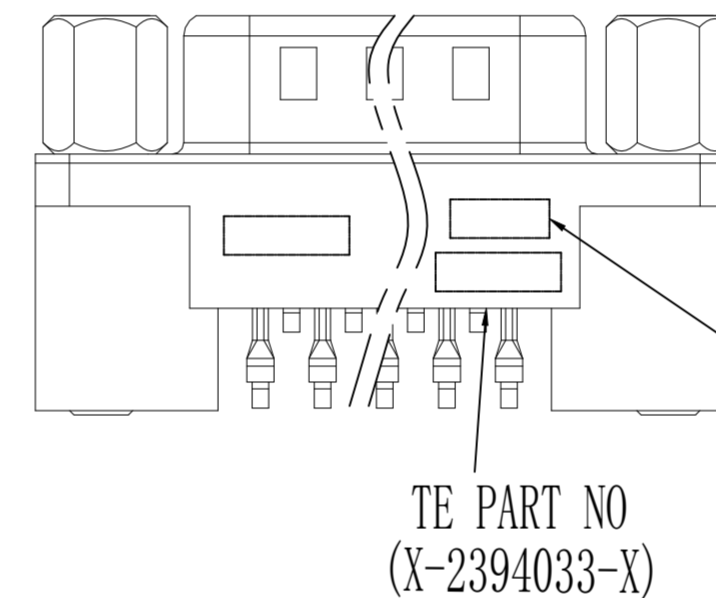
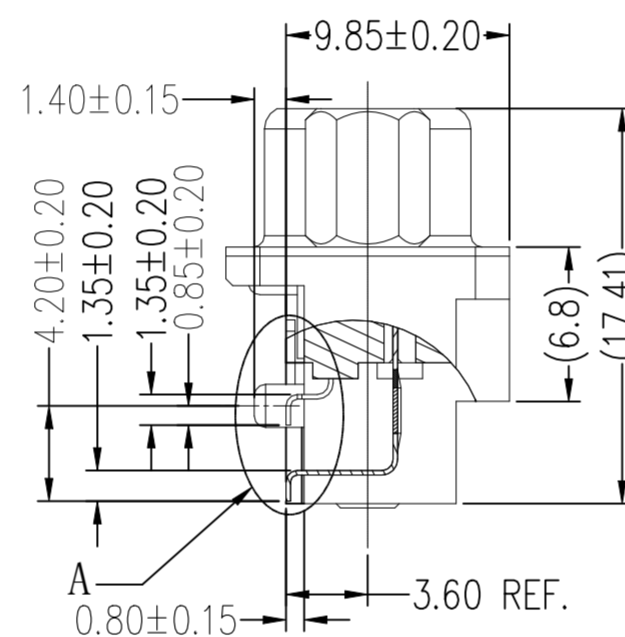
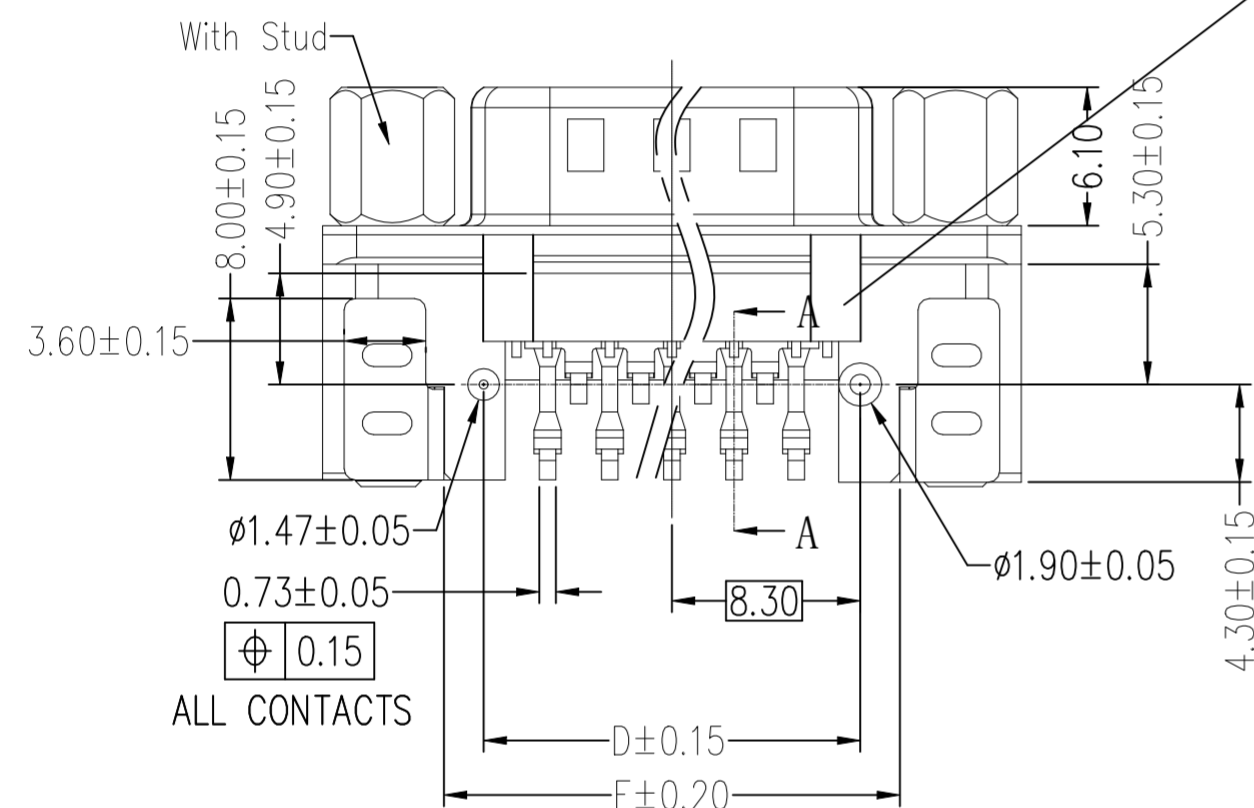
Shell: Steel, Nickel plated

Revit/Fixed Plate: Brass, Tin over Nickel plated

Stud: Brass, Nickel plated

Recommended Process:

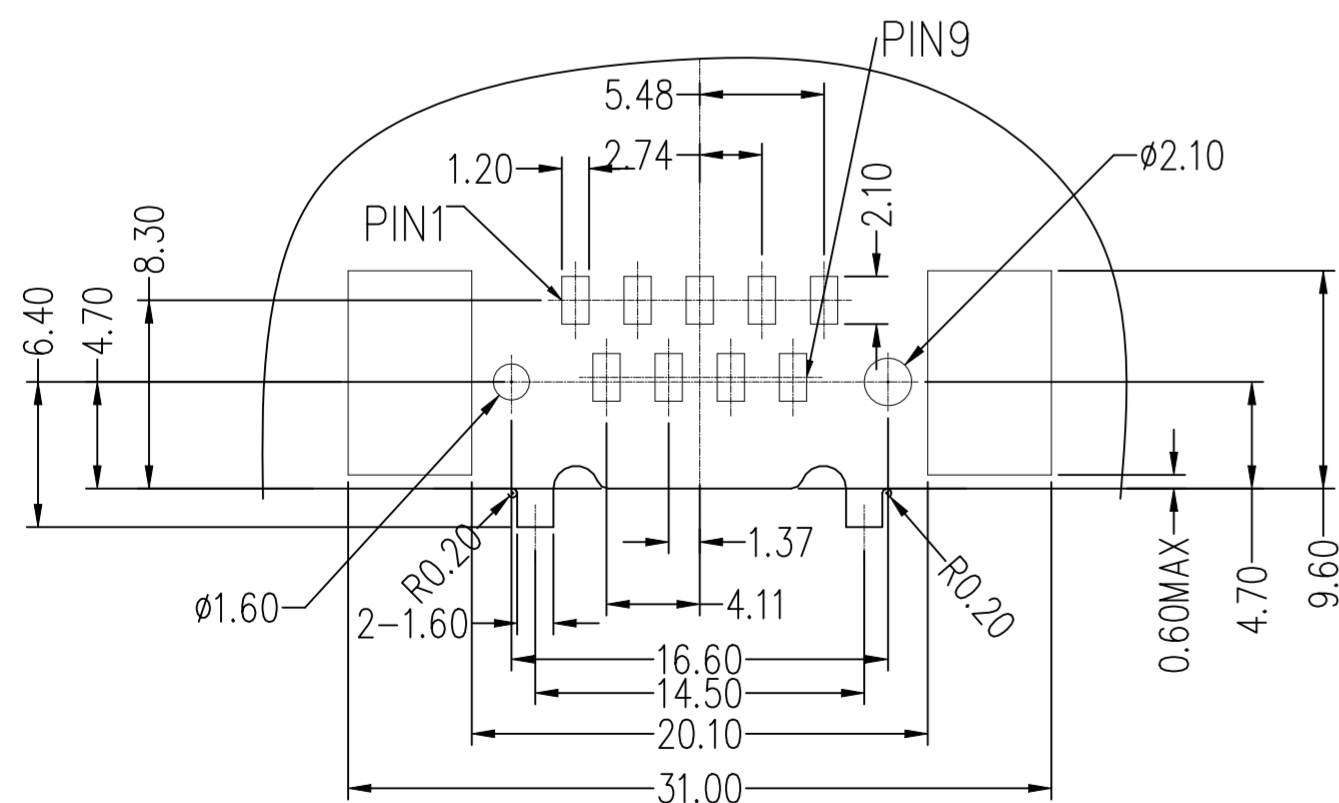
IR soldering, Peak temperature: 260±5°C, 5s



TE PART NO (X-2394033-X)

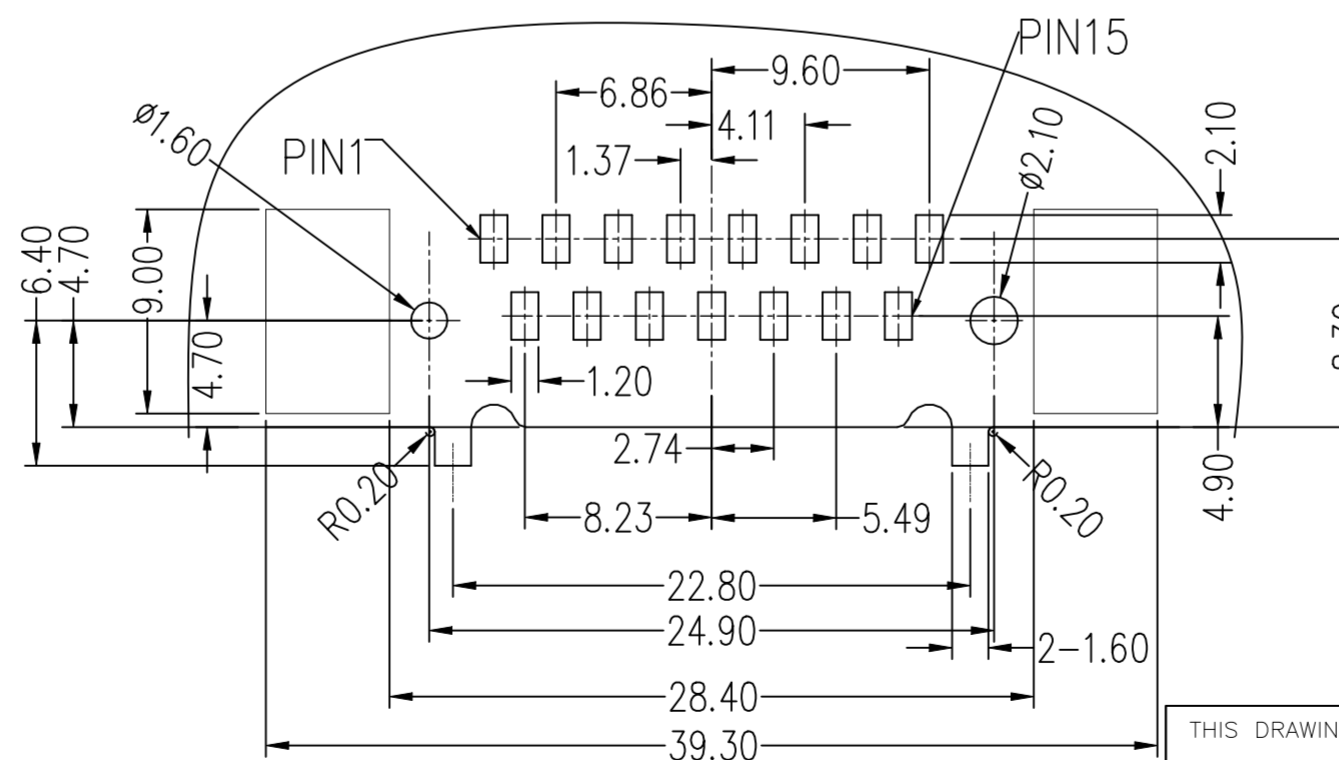
DATE CODE (YYWW)

	15P	39.20	33.32	25.25	24.90	28.40
9P	30.80	25.00	16.90	16.60	20.10	
PINS	A	B	C	D	E	



RECOMMENDED P.C.B LAYOUT For 9 position (COMPONENT SIDE)

RECOMMENDED PCB LAYOUT 1 (COMPONENT SIDE VIEW)



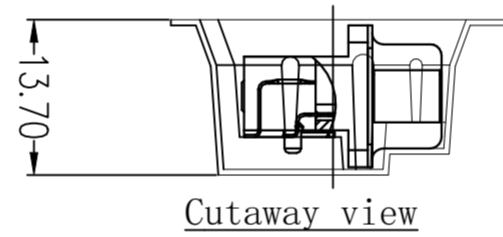
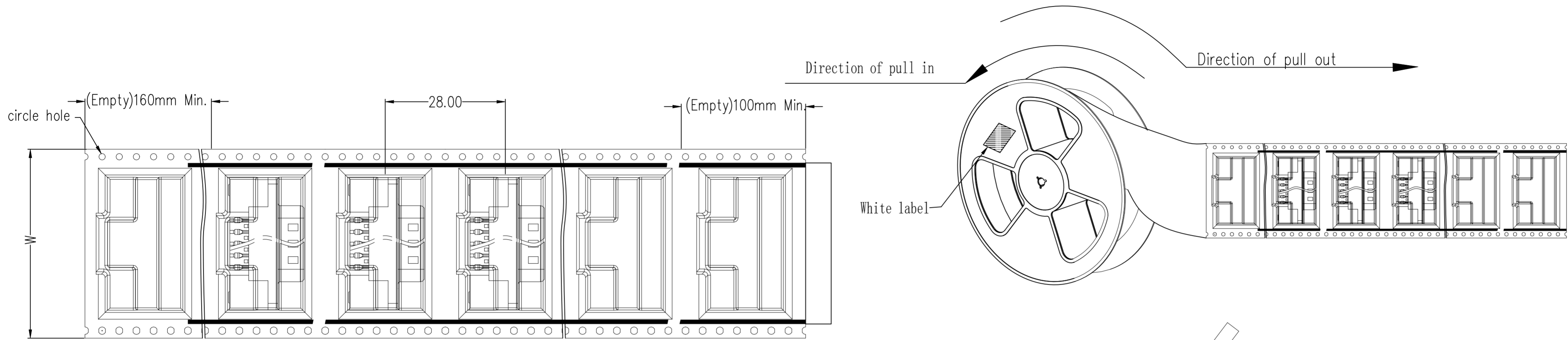
RECOMMENDED P.C.B LAYOUT For 15 position (COMPONENT SIDE)

Pos.	DESCRIPTION	REEL PACKING	TRAY PACKING
9P	4-40 UNC	1-2394033-6	2-2394033-6

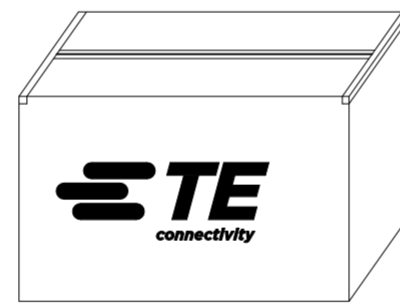
PRODUCT FAMILY TABLE

THIS DRAWING IS A CONTROLLED DOCUMENT.		DWN	-	TE Connectivity	
DIMENSIONS: mm		CHK	-	D-sub Header, Plug, SMT	
TOLERANCES UNLESS OTHERWISE SPECIFIED:		APVD	-	NAME	
0 PLC ± -		PRODUCT SPEC	-	D-sub Header, Plug, SMT	
1 PLC ± -		APPLICATION SPEC	-	SIZE	
2 PLC ± 0.25				CAGE CODE	
3 PLC ± -				DRAWING NO	
4 PLC ± -				RESTRICTED TO	
ANGLES ± -		WEIGHT	-	A2 00779	
FINISH		CUSTOMER DRAWING	-	SCALE	
				SHEET	
				3 of 5	
				REV	
				A1	

P	LTR	DESCRIPTION	DATE	DWN	APVD
-	-	SEE SHEET 1	-	-	-



PIN	W
9P	44.0±0.30
15P	56.0±0.30



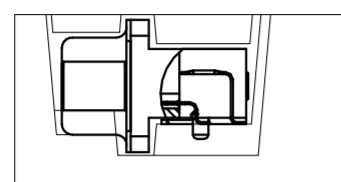
Seal, pack, label.



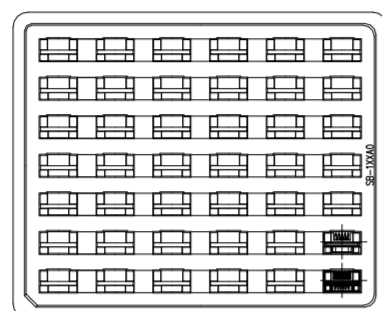
Put reel into outer box, pay attention to the unified label direction.

THIS DRAWING IS A CONTROLLED DOCUMENT.		DWN	-	TE TE Connectivity	
DIMENSIONS: mm		CHK	-		
TOLERANCES UNLESS OTHERWISE SPECIFIED:		APVD	-	NAME	
0 PLC	± -	PRODUCT SPEC	-	D-sub Header, Plug, SMT	
1 PLC	± -	APPLICATION SPEC	-	SIZE	CAGE CODE
2 PLC	± 0.25	WEIGHT	-	A2	00779
3 PLC	± -	CUSTOMER DRAWING	-	DRAWING NO	
4 PLC	± -	SCALE	NTS	C=2394033	
ANGLES	± -	SHEET	4 of 5	RESTRICTED TO	
MATERIAL	FINISH	REV	A1	-	

REVISIONS					
P	LTR	DESCRIPTION	DATE	DWN	APVD
-	-	SEE SHEET 1	-	-	-

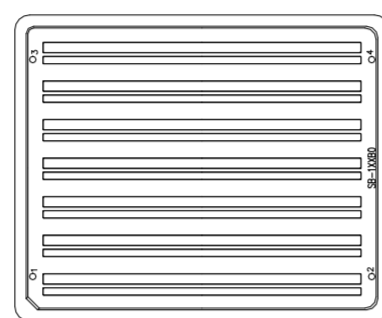


Product piping diagram



No. 1

put the product into the tray

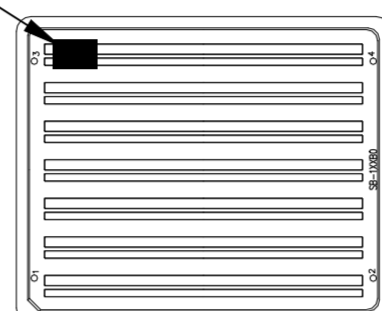


No. 2

Cover the tray

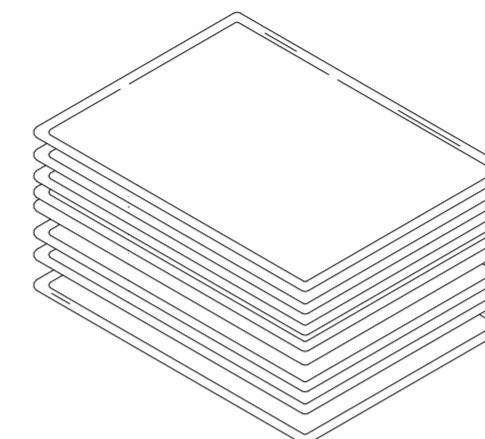


Quantity label



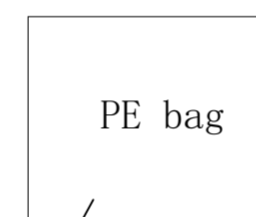
No. 3

Label on top left corner of tray



No. 4

the top and bottom of each put a piece of paper board,

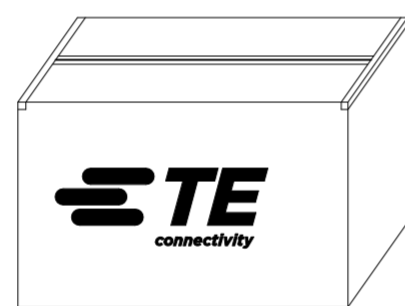
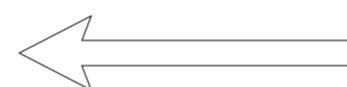


PE bag



No. 5

A waterproof PE bag should be set inside the carton, and then the tray should be put into the carton Sealed with a bag of desiccant.



No. 6

Seal and label the box

Explain:

1. Put the product into the tray as shown in the figure
2. Pay attention to the consistency of label style position and direction;

THIS DRAWING IS A CONTROLLED DOCUMENT.		DWN	-	TE TE Connectivity	
DIMENSIONS: mm		CHK	-		
TOLERANCES UNLESS OTHERWISE SPECIFIED:		APVD	-	NAME	
0 PLC	± -	PRODUCT SPEC	-	D-sub Header, Plug, SMT	
1 PLC	± -	APPLICATION SPEC	-	SIZE	CAGE CODE
2 PLC	± 0.25			A2	00779
3 PLC	± -			DRAWING NO	
4 PLC	± -			C=2394033	
ANGLES	± -	WEIGHT	-	RESTRICTED TO	
MATERIAL	FINISH	CUSTOMER DRAWING		SCALE	SHEET
				NTS	5 of 5
				REV	A1