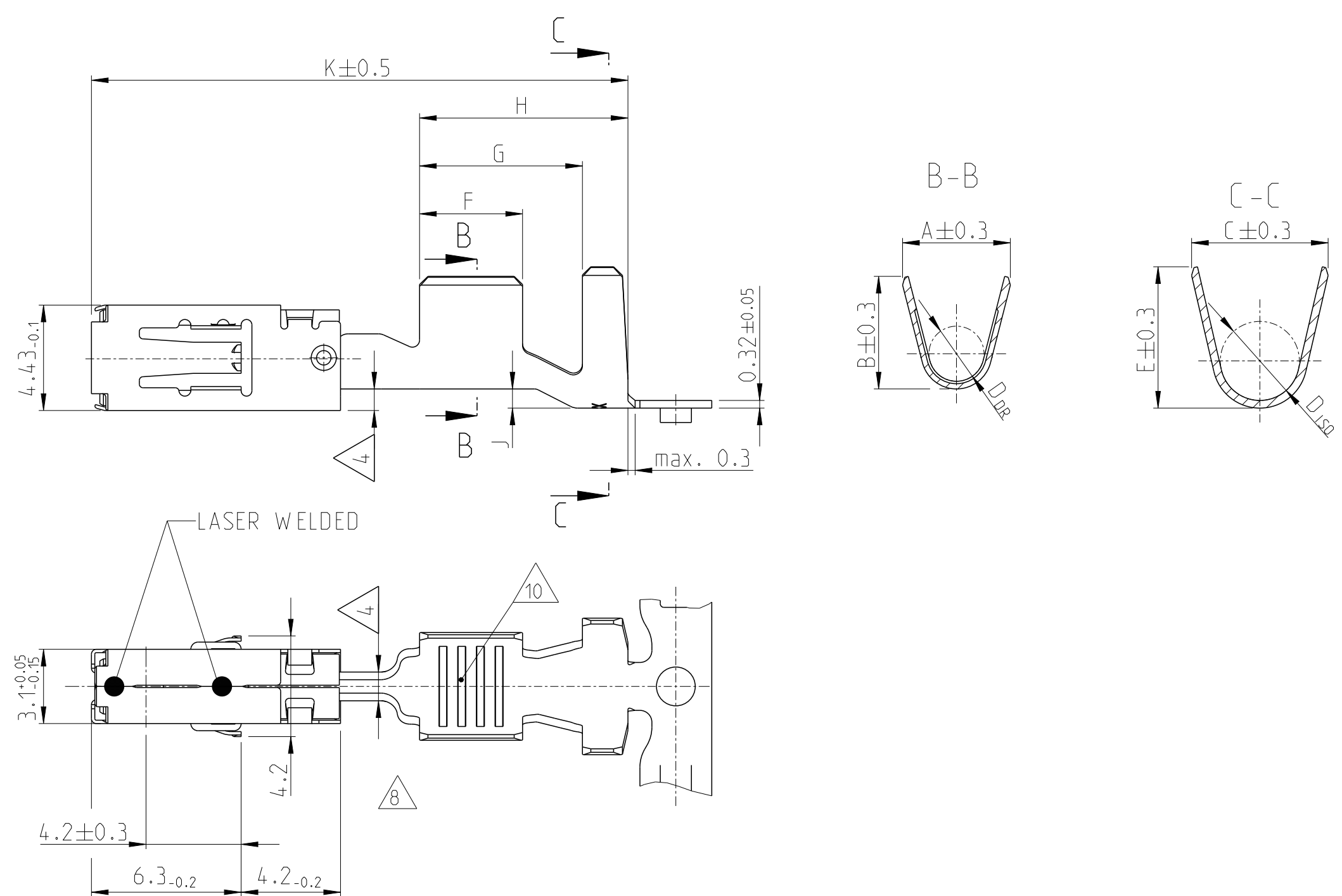
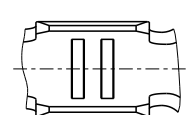


STANDARD CRIMP

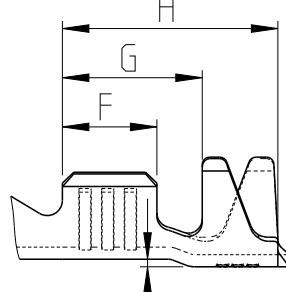


SERRATION DESIGN

DESIGN
0.5 - 1.0mm²

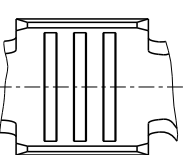


DESIGN
0.2 - 0.5mm²

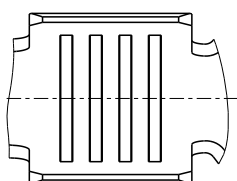


ONLY FOR WIRE SIZE RANGE
0.2 ... 0.5 mm²

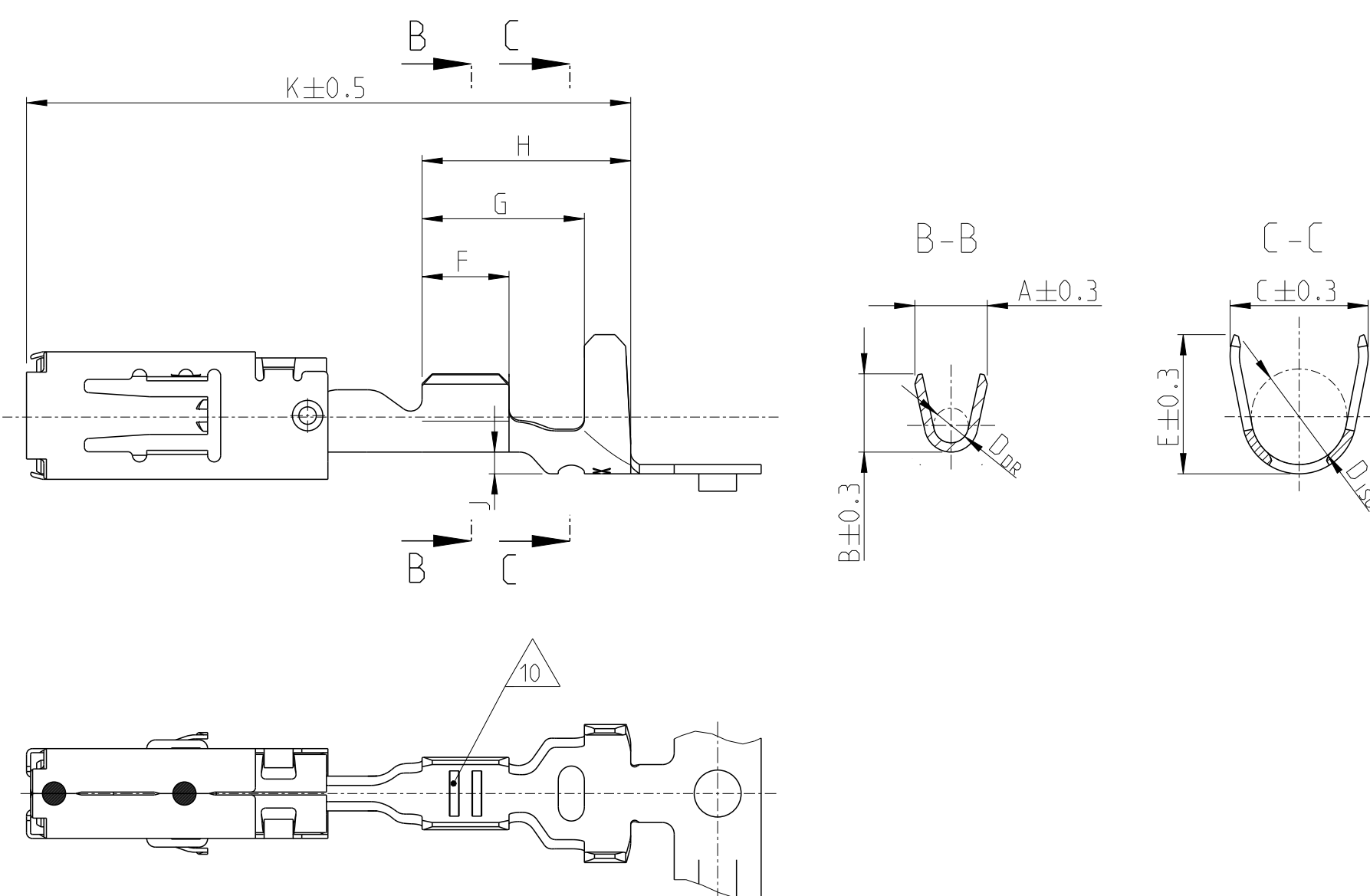
DESIGN
1.5 - 2.5mm²
12 AWG



DESIGN
4.0mm²



SINGLE WIRE SEAL



REVISIONS				
P	LTN	DESCRIPTION	DATE	APVD
A1		REVISE	12JAN2023	S.D W.Z
A2		DIMENSIONAL CHANGE	13OCT2023	J.L W.Z
A3		REVISE	23OCT2023	J.L W.Z
A4		REVISE	11MAY2024	C.L W.Z

NOTES:

- MATING PART SEE INTERFACE DRAWING
TE-NO.: 114-18230-002
- △** SURFACE:
- PRE TIN PLATED 1 TO 3 μm
- GOLD PLATED MIN. 2 μm (ONLY CONTACT AREA)
- SILVER PLATED 3 TO 5 μm (ONLY CONTACT AREA)
- DOUBLE CRIMPS ARE ONLY POSSIBLE WITH
APPLICATORS AUTHORIZED BY TE (NO HAND TOOL)
SUITABLE TOOLS ON REQUEST
- △** GAUGE INSPECTION
- DETAILS OF DESIGN ARE LEFT TO MANUFACTURER
- ONLY GERMAN LANGUAGE VERSION SHALL BE BINDING
- PUNCHING OIL RAZIOL CLF 11 SG
- △** "Ag+" MARKING ON SILVER PLATED VERSIONS FOR INCREASED LIMIT TEMPERATURE
- △** 2434959 SUPERSEDED BY PN 2438888
- △** DIFFERENT FORM AND NUMBER OF THE SERRATIONS POSSIBLE

VERSION	ORDER-NO. STRIP-FORM	BODY MATERIAL	SURFACE	WIRE SIZE RANGE mm ²	INSULATION DIAMETER mm	CRIMP DIMENSIONS										WEIGHT g	SINGLE WIRE SEAL TE CONNECTIVITY NO.	DEAD END PLUG TE CONNECTIVITY NO.	APPLICATION TOOLS	
						A	B	D _{DR}	C	E	D _{ISO}	F	G	H	J					K
SINGLE WIRE SEAL	1-TBD-3	CUNIS X10CFN18-1	SILVER PLATED versilbert	12	3.0	4.0	4.2	2.0	5.0	5.0	3.5	3.5	5.9	7.5	0.8	21.0	0.59	828905-1	828922-1	
	1-TBD-1		PRE TIN PLATED verzinkt	AWG	3.8	-	-	-	-	-	-	-	-	-	-	-	-	-	-	-
	△ 2-2437445-3		SILVER PLATED versilbert	4	3.4	4.5	4.7	2.3	6.0	6.0	4.3	4.3	7.0	8.5	1.25	22.6	0.65	828985-1	828986-1	
	1-2437445-3		SILVER PLATED versilbert	4	3.7	-	-	-	-	-	-	-	-	-	-	-	-	-	-	-
	1-2437445-1		PRE TIN PLATED verzinkt	-	-	-	-	-	-	-	-	-	-	-	-	-	-	-	-	-
	△ 2-2434957-3		SILVER PLATED versilbert	1.5	2.2	3.6	3.8	1.7	5.0	5.0	3.5	3.5	5.9	7.5	0.8	21.0	0.58	828905-1	828922-1	
	1-2434957-3		SILVER PLATED versilbert	1.5	2.2	-	-	-	-	-	-	-	-	-	-	-	-	-	-	-
	1-2434957-2		GOLD PLATED vergoldet	2.5	3.0	-	-	-	-	-	-	-	-	-	-	-	-	-	-	-
	1-2434957-1		PRE TIN PLATED verzinkt	-	-	-	-	-	-	-	-	-	-	-	-	-	-	-	-	-
	1-2434955-3		SILVER PLATED versilbert	0.5	1.4	2.5	2.7	1.2	4.8	4.8	3.3	3.0	5.6	7.2	0.75	21.0	0.54	828904-1	828922-1	
	1-2434955-2		GOLD PLATED vergoldet	-	-	-	-	-	-	-	-	-	-	-	-	-	-	-	-	-
	1-2434955-1		PRE TIN PLATED verzinkt	1.0	2.1	-	-	-	-	-	-	-	-	-	-	-	-	-	-	-
	1-2434753-3		SILVER PLATED versilbert	0.2	1.2	2.4	2.3	1.0	4.5	4.5	3.2	2.5	5.1	6.7	0.75	21.0	0.52	828904-1	828922-1	
	1-2434753-2		GOLD PLATED vergoldet	-	-	-	-	-	-	-	-	-	-	-	-	-	-	-	-	-
	1-2434753-1		PRE TIN PLATED verzinkt	0.5	1.4	-	-	-	-	-	-	-	-	-	-	-	-	-	-	-
1-TBD-3	SILVER PLATED versilbert	0.2	1.2	2.1	2.1	0.8	4.5	4.5	3.2	2.5	5.1	6.7	0.75	21.0	0.52	828904-1	828922-1			
1-TBD-2	GOLD PLATED vergoldet	-	-	-	-	-	-	-	-	-	-	-	-	-	-	-	-	-		
1-TBD-1	PRE TIN PLATED verzinkt	0.5	1.4	-	-	-	-	-	-	-	-	-	-	-	-	-	-	-		
STANDARD CRIMP	△ 2-2437341-3	CUNIS X10CFN18-1	SILVER PLATED versilbert	4	2.7	4.5	4.7	2.3	5.7	5.9	3.3	4.3	6.8	8.7	0.8	22.6	0.65	-	-	
	1-2437341-3		SILVER PLATED versilbert	4	3.7	-	-	-	-	-	-	-	-	-	-	-	-	-	-	
	1-2437341-1		PRE TIN PLATED verzinkt	-	-	-	-	-	-	-	-	-	-	-	-	-	-	-	-	
	△ 2-2434953-3		SILVER PLATED versilbert	1.5	2.2	3.6	3.8	1.7	4.6	5.0	2.6	3.5	5.1	6.7	0.3	20.2	0.56	-	-	
	1-2434953-3		SILVER PLATED versilbert	1.5	2.2	-	-	-	-	-	-	-	-	-	-	-	-	-	-	-
	1-2434953-2		GOLD PLATED vergoldet	2.5	3.0	-	-	-	-	-	-	-	-	-	-	-	-	-	-	-
	1-2434953-1		PRE TIN PLATED verzinkt	-	-	-	-	-	-	-	-	-	-	-	-	-	-	-	-	-
	1-2434952-3		SILVER PLATED versilbert	0.5	1.4	2.5	2.7	1.2	3.3	3.5	1.8	3.0	4.6	6.2	0.2	20.2	0.51	-	-	
	1-2434952-2		GOLD PLATED vergoldet	-	-	-	-	-	-	-	-	-	-	-	-	-	-	-	-	-
	1-2434952-1		PRE TIN PLATED verzinkt	1.0	2.1	-	-	-	-	-	-	-	-	-	-	-	-	-	-	-
	1-2438888-3		SILVER PLATED versilbert	0.2	1.2	2.4	2.3	1.0	2.9	2.9	1.4	2.5	3.8	5.7	0.2	20.2	0.48	-	-	
	1-2438888-1		PRE TIN PLATED verzinkt	0.5	1.4	-	-	-	-	-	-	-	-	-	-	-	-	-	-	-
	△ 1-2434959-3		SILVER PLATED versilbert	0.2	1.2	2.1	2.1	0.8	2.9	2.9	1.4	2.5	3.8	5.7	0.2	20.2	0.48	-	-	
	△ 1-2434959-1		PRE TIN PLATED verzinkt	0.5	1.4	-	-	-	-	-	-	-	-	-	-	-	-	-	-	-

SEE APPLICATION SPECIFICATION 114-18148

THIS DRAWING IS A CONTROLLED DOCUMENT.		OWN S.D.U	23NOV2022		TE Connectivity
DIMENSIONS: mm		CHK J.G.U	23NOV2022		NAME PRODUCT GROUP DRAWING FOR AMP MCP 2.8
TOLERANCES UNLESS OTHERWISE SPECIFIED: ±0.2		APVD W.ZHANG	23NOV2022	SIZE 108-18513	RESTRICTED TO
MATERIAL		FINISH	114-18148	SCALE 5:1	SHEET 1 OF 1
CUSTOMER DRAWING		WEIGHT	-	REV A4	