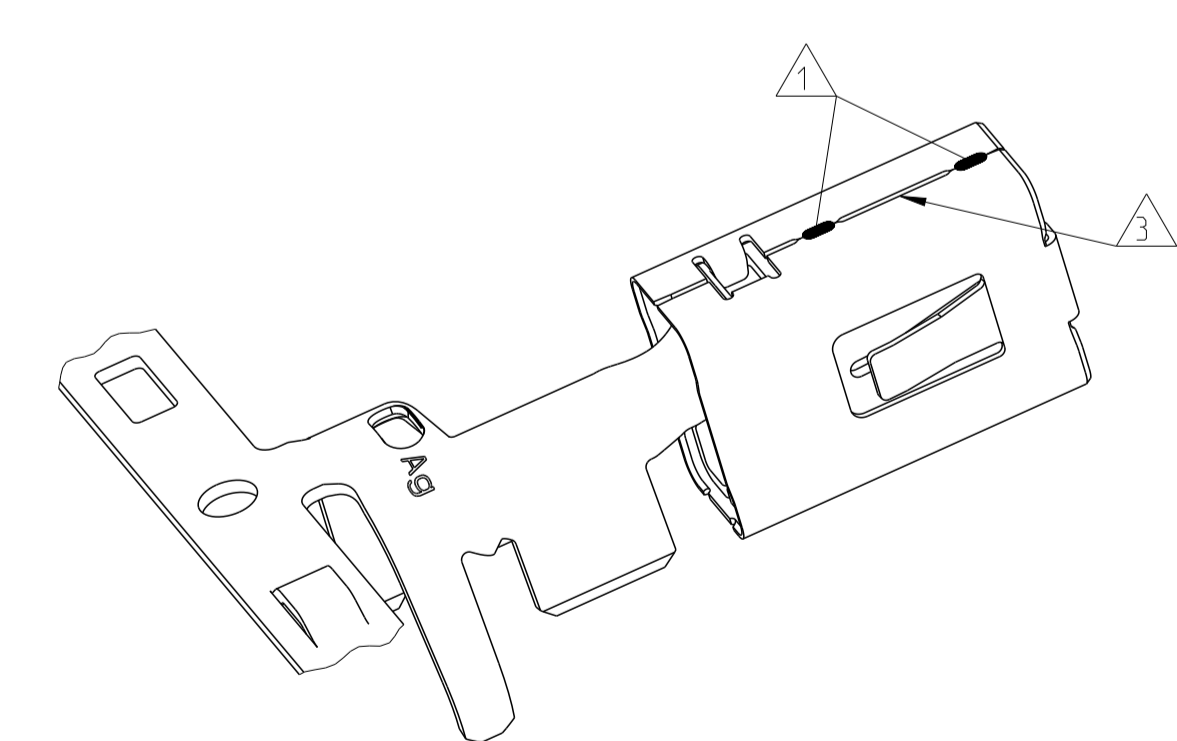
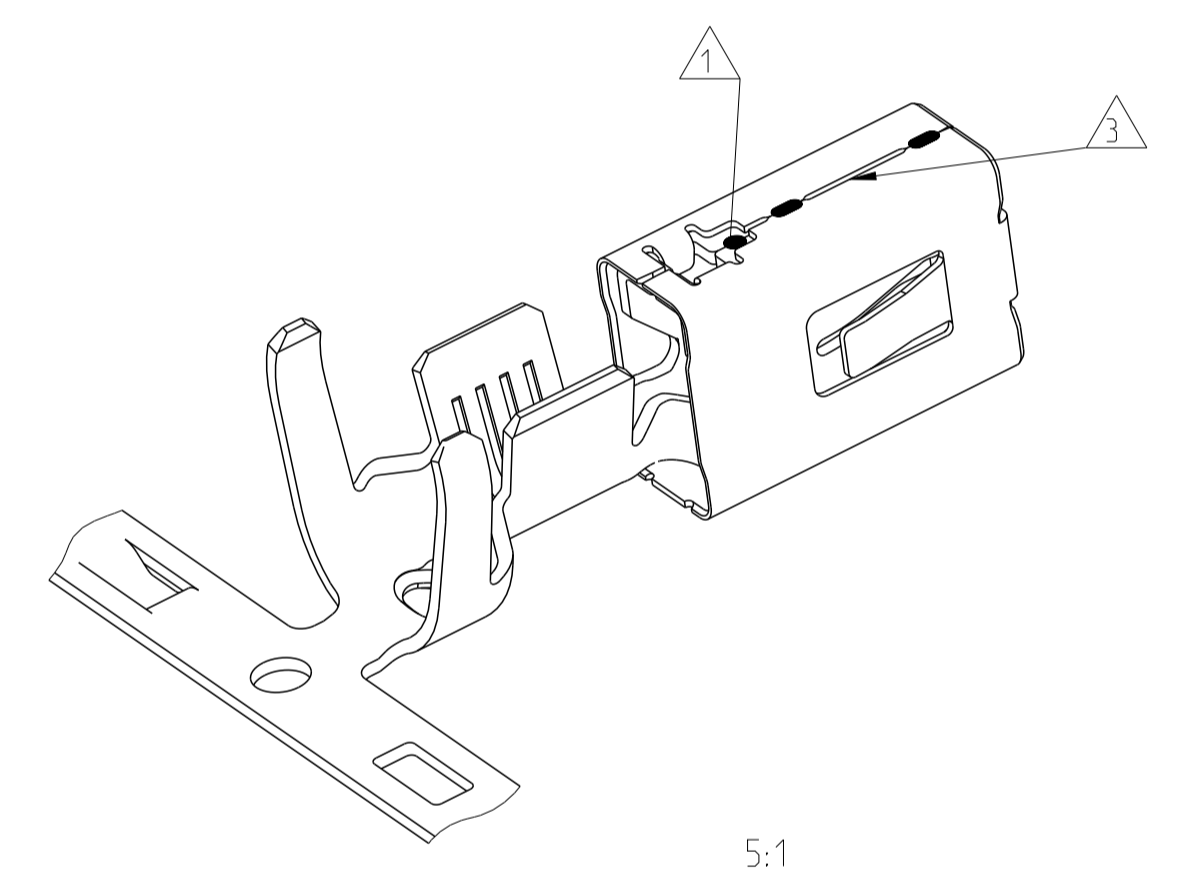
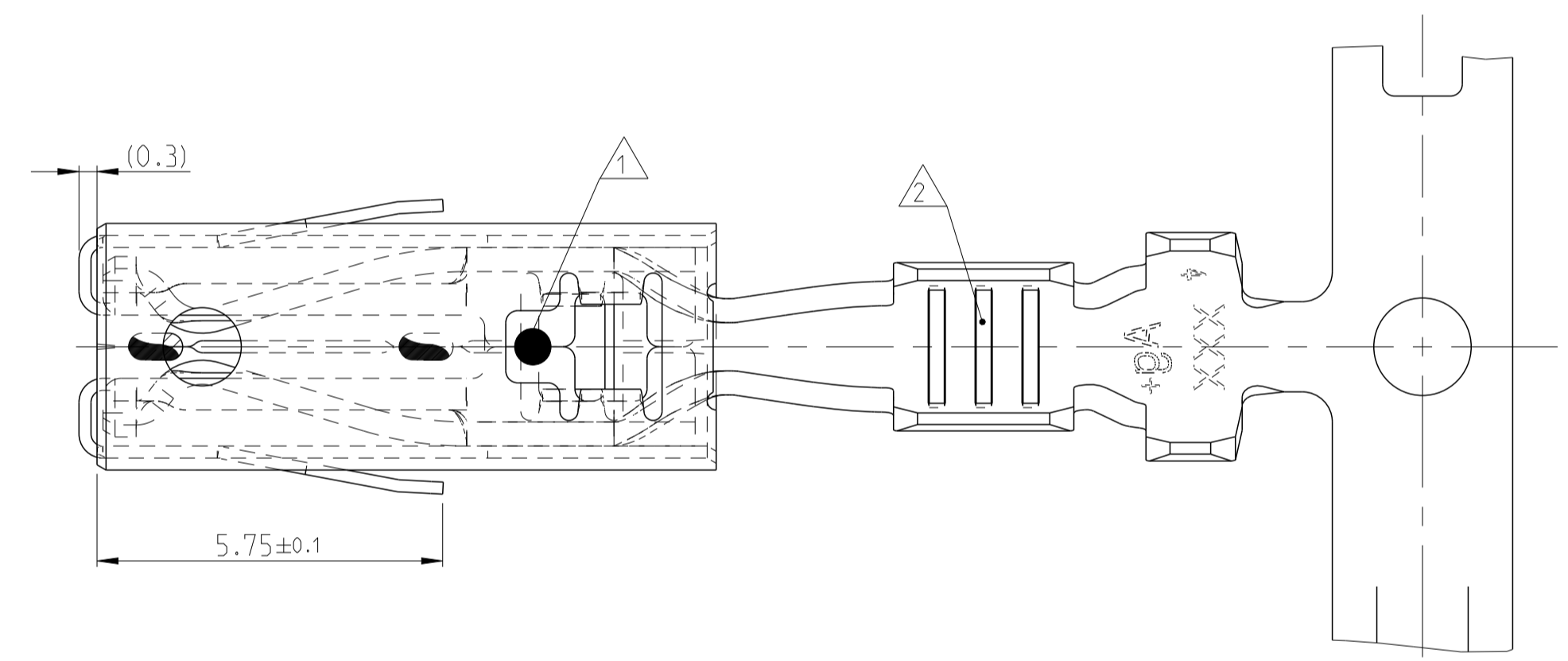
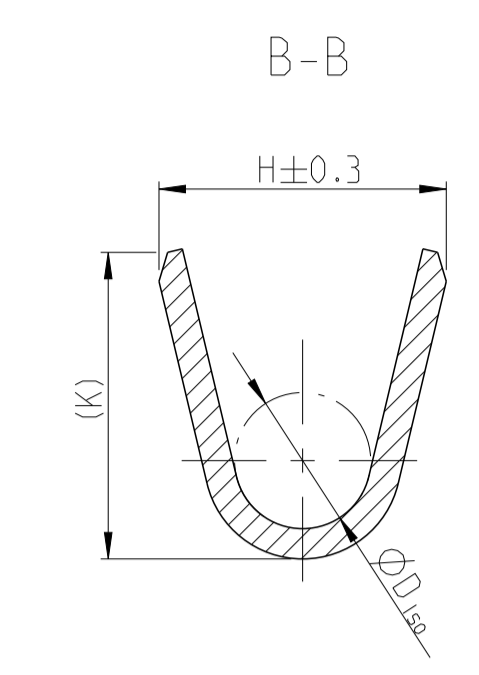
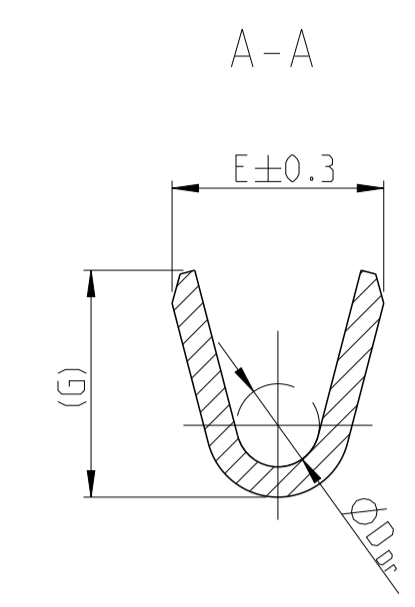
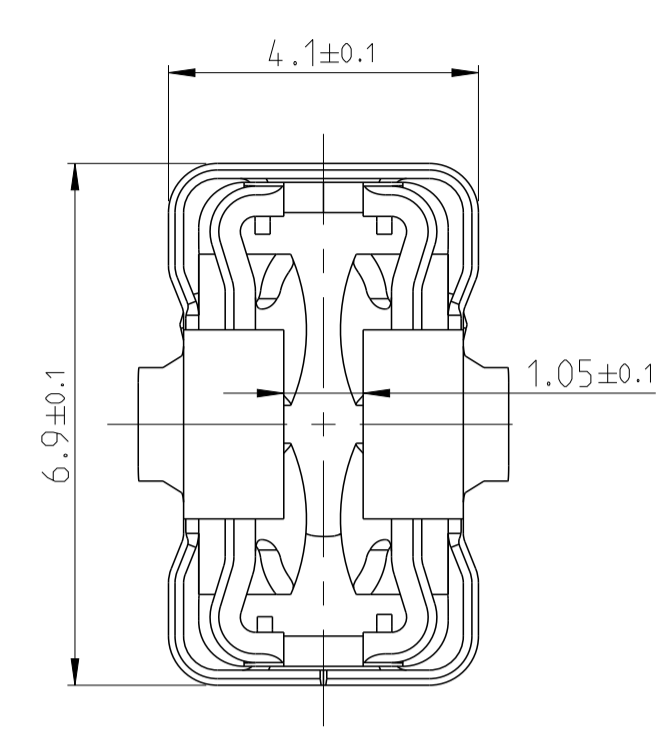
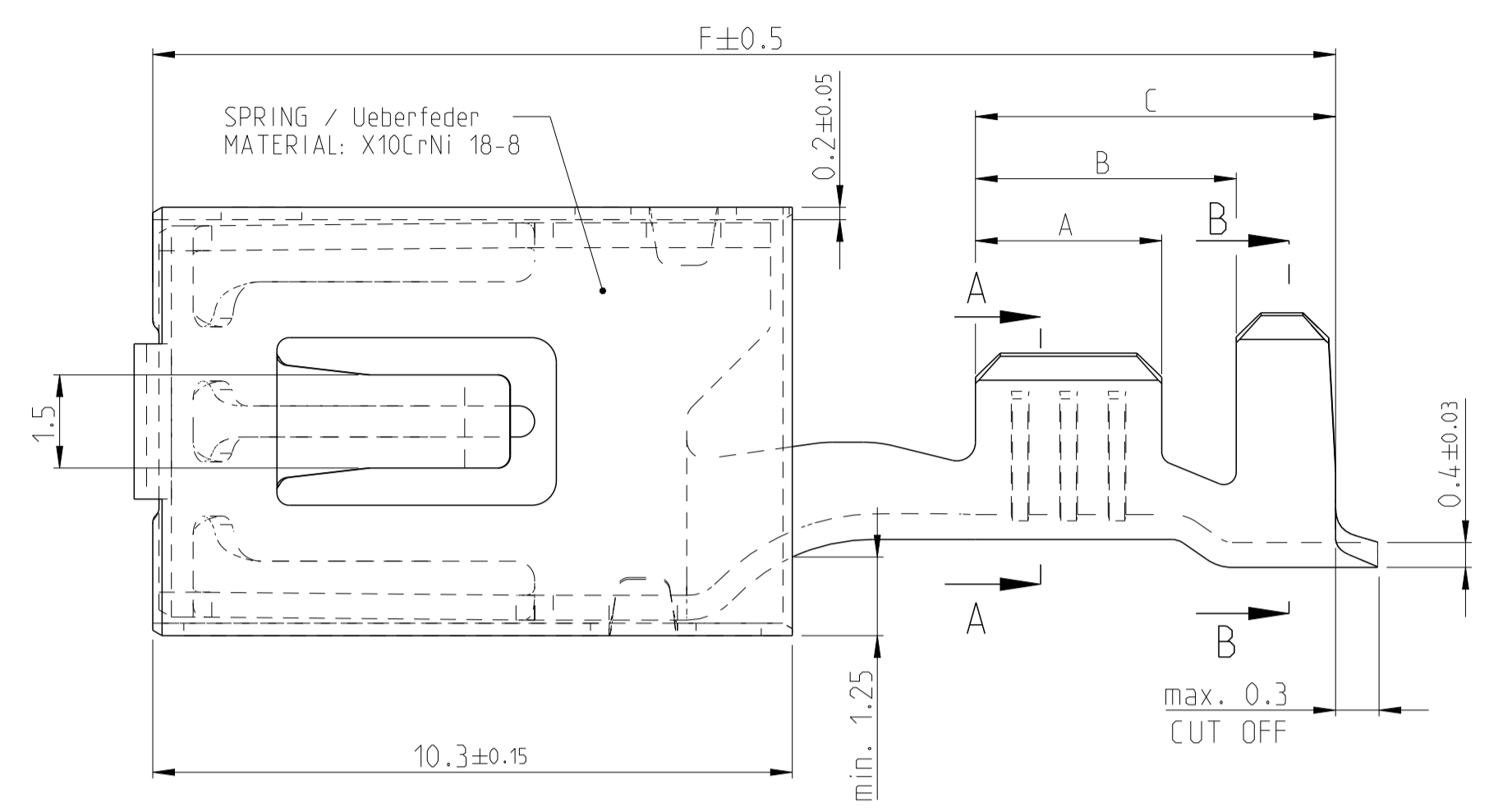


REVISIONS				
P.	LTN	DESCRIPTION	DATE	APVD
A		INITIAL RELEASE	11NOV2022	S.D W.Z

VERSION A



- NOTES
Bemerkungen
- 1 LASERWELDED
 - 2 DIFFERENT FORM AND NUMBER OF THE SERRATIONS POSSIBLE
 - 3 DIFFERENT ASSEMBLY CAUSED BY PRODUCTION OF THE SPRING ON THE BODY. SPOTWELDS CAN BE ABOVE OR DOWN.
 - 4 USED WITH TAB 0.8±0.03mm x 4.8 ... 6.3 ±0.1mm

ORDER NO. STRIP	WIRE RANGE (mm ²)	INSULATION- Ø (mm)	MATERIAL	SURFACE IN CONTACT AREA	A	B	C	F	WIRE CRIMP	INSULATION CRIMP	VERSION A
2434766-1	>2.5-4.0	3.4-4.5	CuNiSi	TIN	4.0	5.2	6.8	19.05	E = 4.6 G = 4.8 D _{Dr} = 2.4	H = 6.4 K = 6.7 D _{Iso} = 4.0	
2434764-1	>1.0-2.5	2.2-3.0	CuNiSi	TIN	3.5	4.7	6.3	19.05	E = 3.8 G = 4.0 D _{Dr} = 1.7	H = 4.7 K = 4.9 D _{Iso} = 2.6	
2434763-1	0.5-1.0	1.4-2.1	CuNiSi	TIN	3.0	4.2	5.8	19.05	E = 2.8 G = 3.0 D _{Dr} = 1.1	H = 3.8 K = 4.1 D _{Iso} = 1.8	

THIS DRAWING IS A CONTROLLED DOCUMENT.

DIMENSIONS:	TOLERANCES UNLESS OTHERWISE SPECIFIED:	OWN: S.DU	11NOV2022	TE Connectivity
mm	±0.2	CHK: J.GU	11NOV2022	
MATERIAL:	FINISH:	APVD: W.ZHANG	11NOV2022	NAME: AMP MCP6.3/4.8K FLATCONTACT
				PRODUCT SPEC: 108-18718
				APPLICATION SPEC: 116-18388
				SIZE: A
				CAGE CODE: 00779
				DRAWING NO: 2434763
				RESTRICTED TO: -
				SCALE: 10:1
				SHEET: 1 OF 1
				REV: A

Customer Drawing