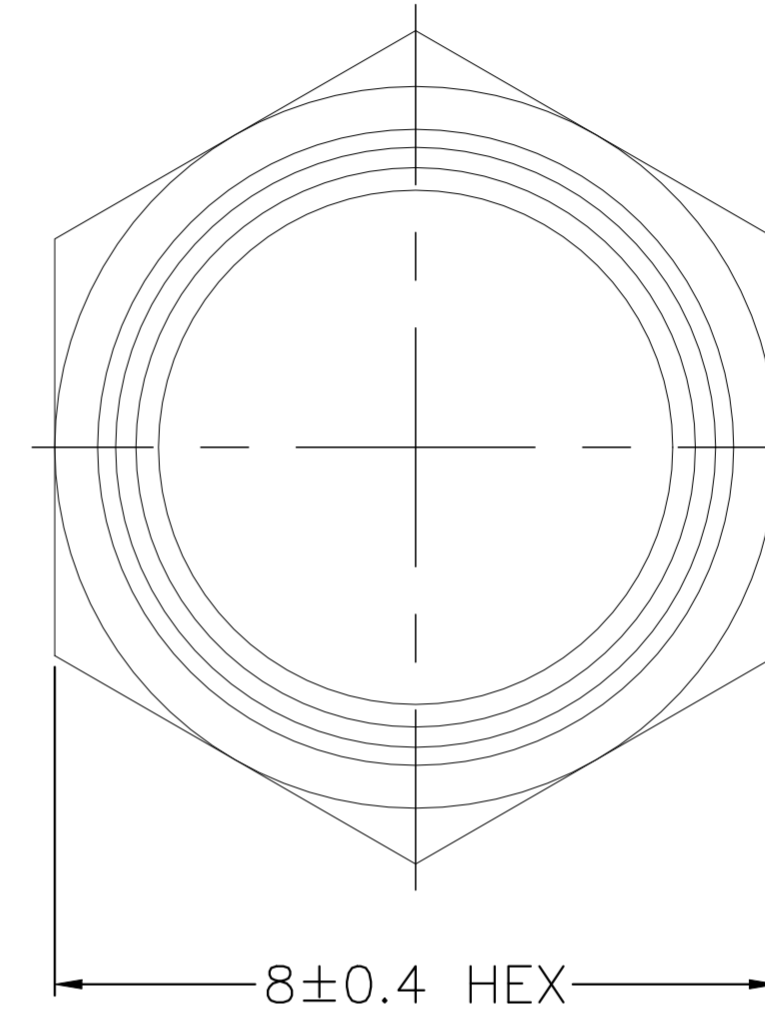
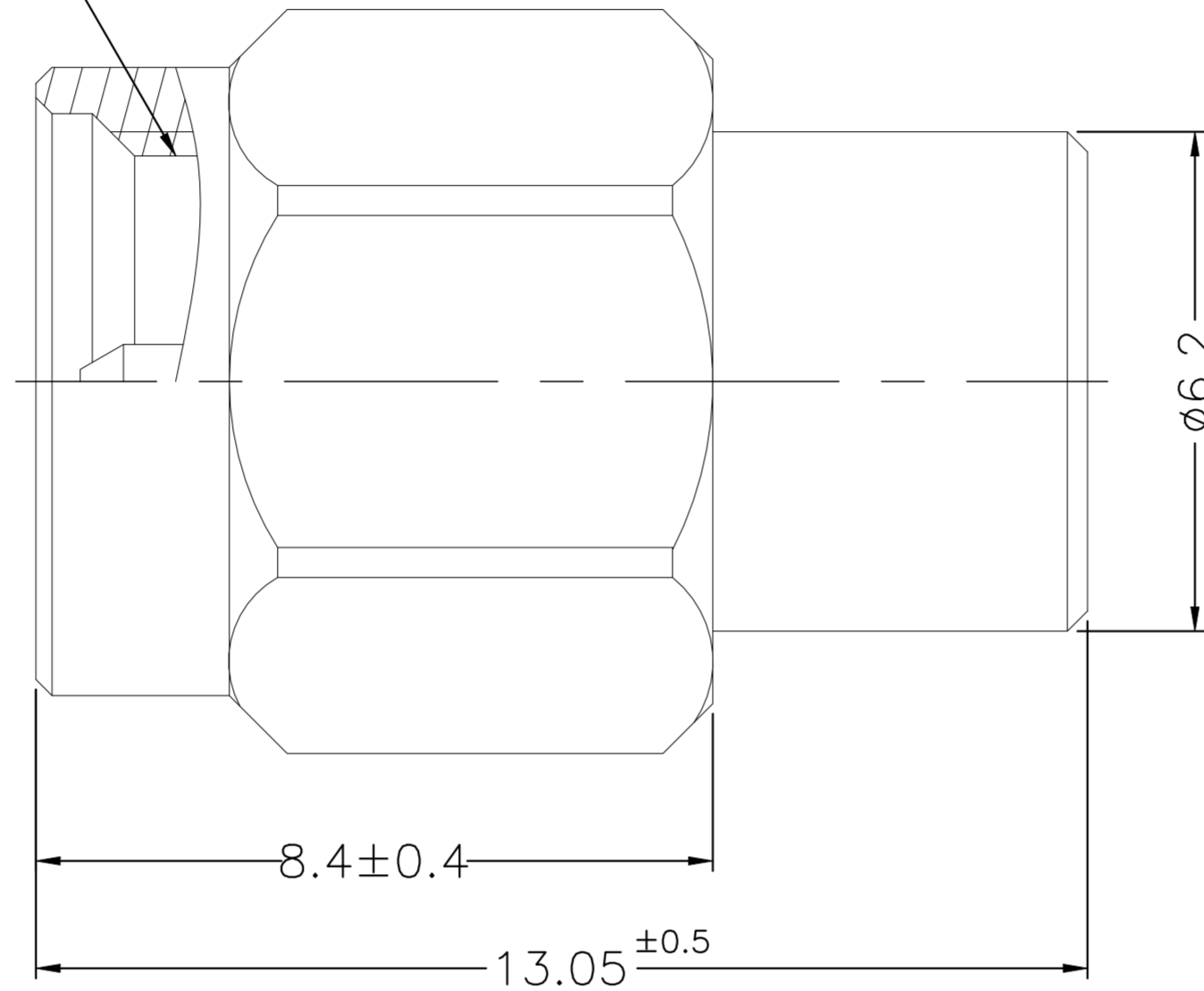


REVISIONS					
P	LTR	DESCRIPTION	DATE	DWN	APVD
	A	GTP(ECN-23-233105)	28SEP2023	ED	WH

1/4-36UNS-2B



NOTES:

- 1 PACK IN ACCORDANCE WITH TE SPEC 107-3275;
- 2 ALL DIMENSIONS ARE NOMINAL FOR REFERENCE ONLY UNLESS OTHERWISE STATED;
- 3 ELECTRICAL CHARACTERISTICS :
 FREQUENCY RANGE : DC-18GHz
 NOMINAL IMPEDANCE : 50 OHMS
 POWER RATING: 1W
 VSWR : 1.3 MAX(DC-18GHz)
- 4 MECHANICAL CHARACTERISTICS :
 DURABILITY : 500 CYCLES
 TORQUE SETTING : 7-10 IN-LBS;
- 5 TEMPERATURE RANGE: -40°-+125°;
- 6 RoHS: COMPLIANT.

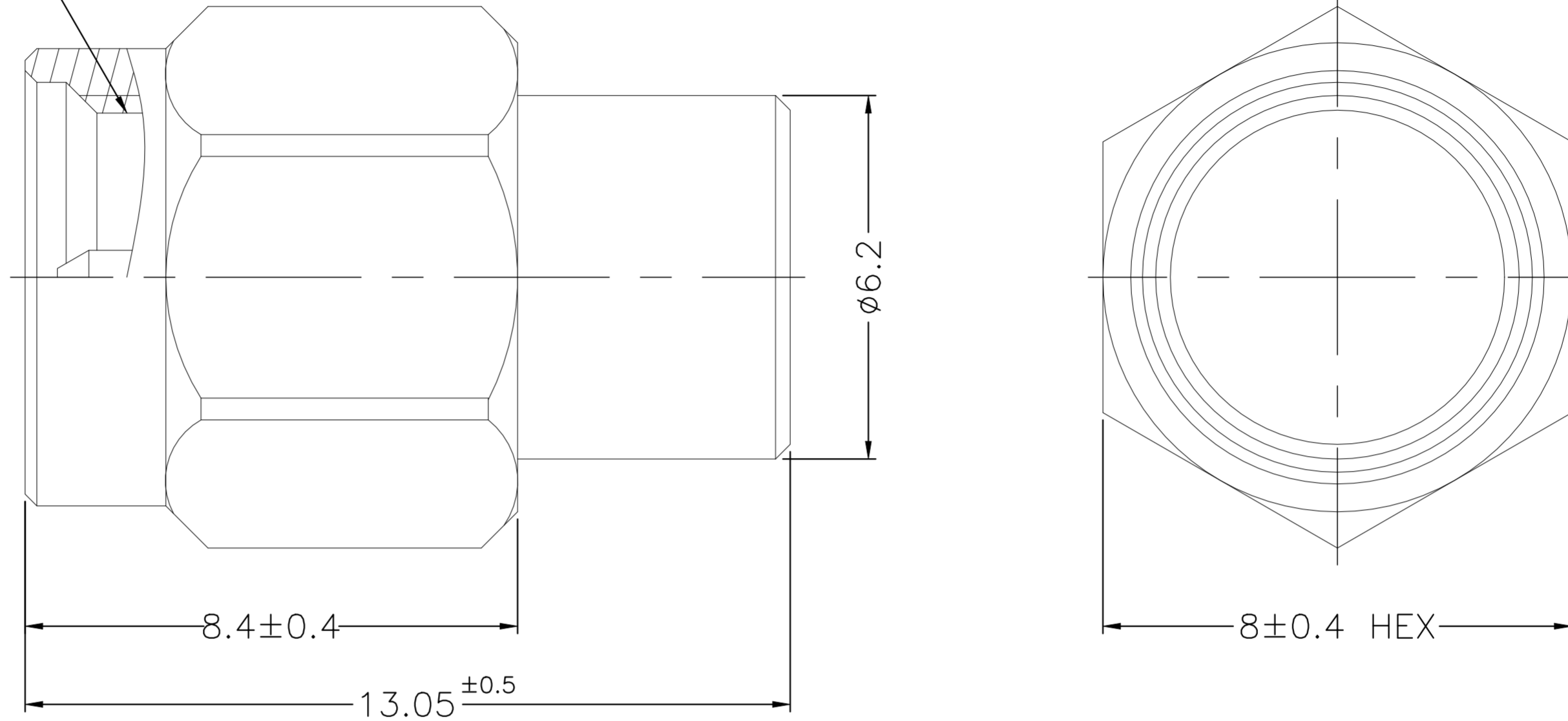
QTY	DESCRIPTION	MATERIAL	DESCRIPTION	ITEM
1	PASSIVATION	STAINLESS STEEL	SHELL	9
1	PASSIVATION	STAINLESS STEEL	RETAINER RING	8
1	RED	SILICONE RUBBER	GASKET	7
1	GOLD 3u"/ NICKEL/COPPER	BRASS	COVER	6
1	GOLD 3u"/ NICKEL/COPPER	BRASS	INNER BODY	5
1	NATURAL	50 OHM	RESISTOR	4
1	GOLD 50u"/ NICKEL/COPPER	BRASS	CENTER CONTACT	3
1	NATURAL	PTFE	INSULATOR	2
1	GOLD 3u"/ NICKEL/COPPER	BRASS	BODY	1
2467918-1	PLATING	MATERIAL	DESCRIPTION	ITEM
QUANTITY PER ASSY		PARTS LIST		

THIS DRAWING IS A CONTROLLED DOCUMENT.		DWN ED 28SEP2023	TE Connectivity Ltd.	
DIMENSIONS: mm		CHK ED 28SEP2023		
		APVD WH 28SEP2023	NAME SMA MALE TERMINATION, STRAIGHT,18GHZ	
TOLERANCES UNLESS OTHERWISE SPECIFIED: 0 PLC ± 0.3 1 PLC ± 0.2 2 PLC ± 0.1 3 PLC ± - 4 PLC ± - ± 5'		PRODUCT SPEC -	RESTRICTED TO -	
MATERIAL SEE TABLE		APPLICATION SPEC -	SIZE A2	CAGE CODE 00779
		WEIGHT -	DRAWING NO C=2467918	SCALE 8:1
		CUSTOMER DRAWING	SHEET 1 OF 2	REV A

REVISIONS

P	LTR	DESCRIPTION	DATE	DWN	APVD
-	-	SEE SHEET 1	-	-	-

1/4-36UNS-2B



NOTES:

- 1 PACK IN ACCORDANCE WITH TE SPEC 107-3275;
- 2 ALL DIMENSIONS ARE NOMINAL FOR REFERENCE ONLY UNLESS OTHERWISE STATED;
- 3 ELECTRICAL CHARACTERISTICS :
 FREQUENCY RANGE : DC-18GHz
 NOMINAL IMPEDANCE : 50 OHMS
 POWER RATING:1W
 VSWR : 1.3 MAX(DC-18GHz)
- 4 MECHANICAL CHARACTERISTICS :
 DURABILITY : 500 CYCLES
 TORQUE SETTING : 7-10 IN-LBS;
- 5 TEMPERATURE RANGE: -40°-+125°;
- 6 RoHS: COMPLIANT;
- 7 2467918-2 HAVE SAME DIMENSIONS WITH 2467918-1,BUT MATERIAL AND PLATING ARE DIFFERENT.

QTY	DESCRIPTION	MATERIAL	ITEM
1	GOLD 50u"/ NICKEL/COPPER	STAINLESS STEEL	SHELL
1	PASSIVATION	STAINLESS STEEL	RETAINER RING
1	RED	SILICONE RUBBER	GASKET
1	GOLD 50u"/ NICKEL/COPPER	STAINLESS STEEL	COVER
1	GOLD 50u"/ NICKEL/COPPER	BRASS	INNER BODY
1	NATURAL	50 OHM	RESISTOR
1	GOLD 50u"/ NICKEL/COPPER	BERYLLIUM COPPER	CENTER CONTACT
1	NATURAL	PTFE	INSULATOR
1	GOLD 50u"/ NICKEL/COPPER	STAINLESS STEEL	BODY
2467918-2	PLATING	MATERIAL	DESCRIPTION

QUANTITY PER ASSY PARTS LIST

THIS DRAWING IS A CONTROLLED DOCUMENT.		DWN	ED	11JUL2023	 TE Connectivity Ltd.												
		CHK	ED	11JUL2023													
		APVD	WH	11JUL2023													
		PRODUCT SPEC	-	-													
DIMENSIONS: mm		TOLERANCES UNLESS OTHERWISE SPECIFIED:		NAME													
<table border="0"> <tr><td>0 PLC</td><td>± 0.3</td></tr> <tr><td>1 PLC</td><td>± 0.2</td></tr> <tr><td>2 PLC</td><td>± 0.1</td></tr> <tr><td>3 PLC</td><td>± -</td></tr> <tr><td>4 PLC</td><td>± -</td></tr> <tr><td>ANGLES</td><td>± 5°</td></tr> </table>		0 PLC	± 0.3	1 PLC	± 0.2	2 PLC	± 0.1	3 PLC	± -	4 PLC	± -	ANGLES	± 5°	APPLICATION SPEC		SMA MALE TERMINATION, STRAIGHT,DC-18GHZ	
0 PLC	± 0.3																
1 PLC	± 0.2																
2 PLC	± 0.1																
3 PLC	± -																
4 PLC	± -																
ANGLES	± 5°																
MATERIAL SEE TABLE		FINISH -		SIZE A2 CAGE CODE 00779 DRAWING NO C=2467918 RESTRICTED TO -													
		WEIGHT -		SCALE 8:1 SHEET 2 OF 2 REV A													
		CUSTOMER DRAWING															