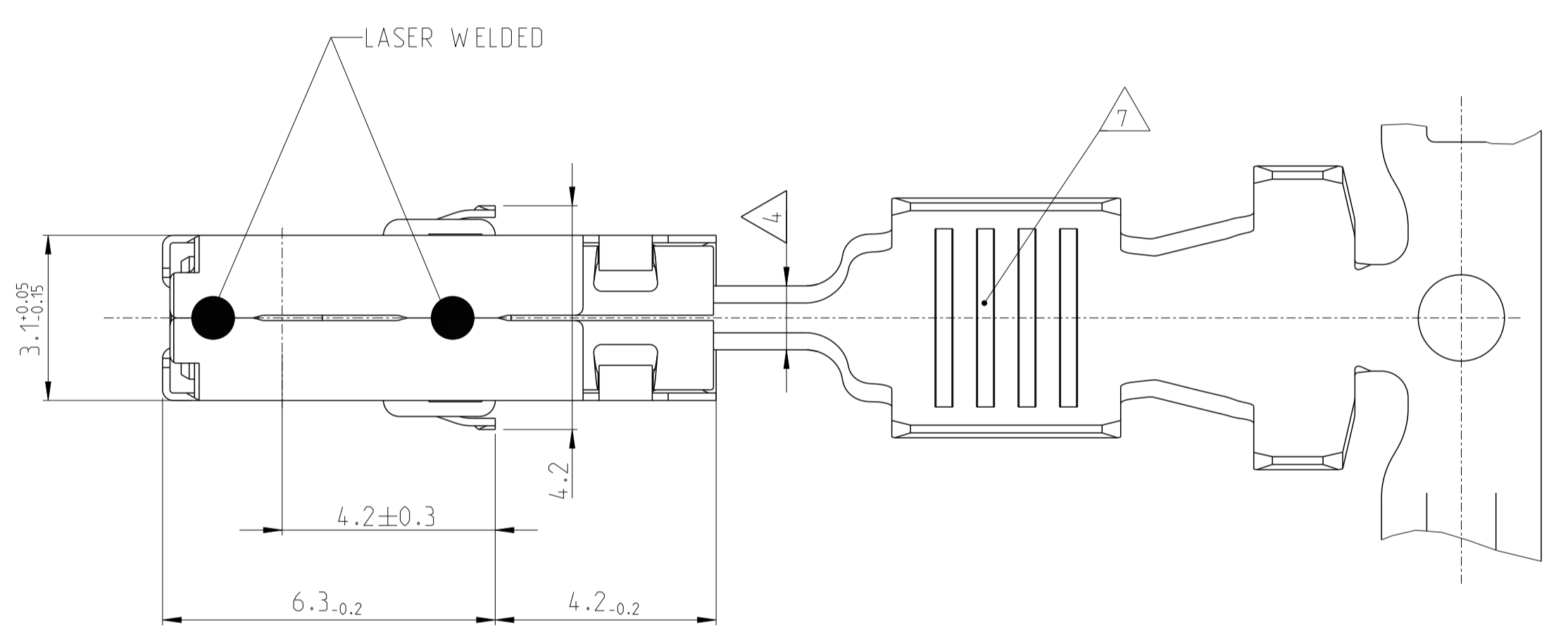
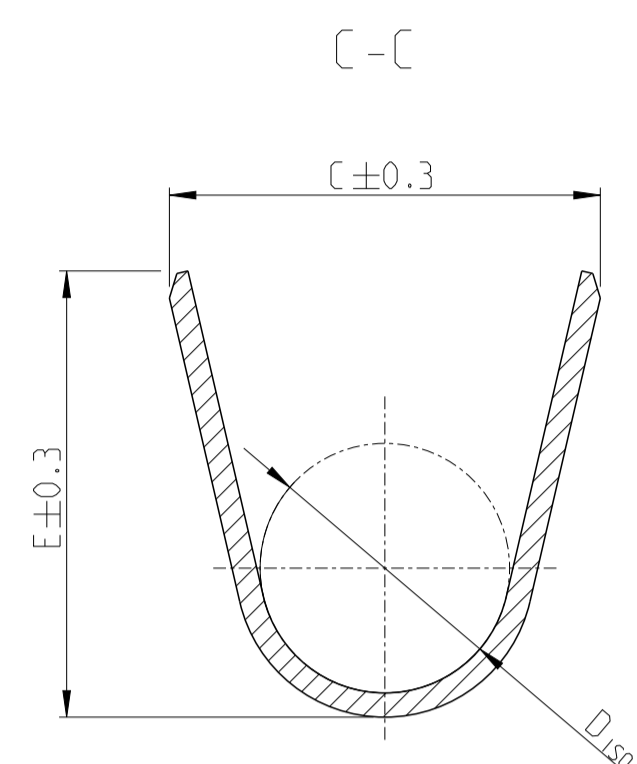
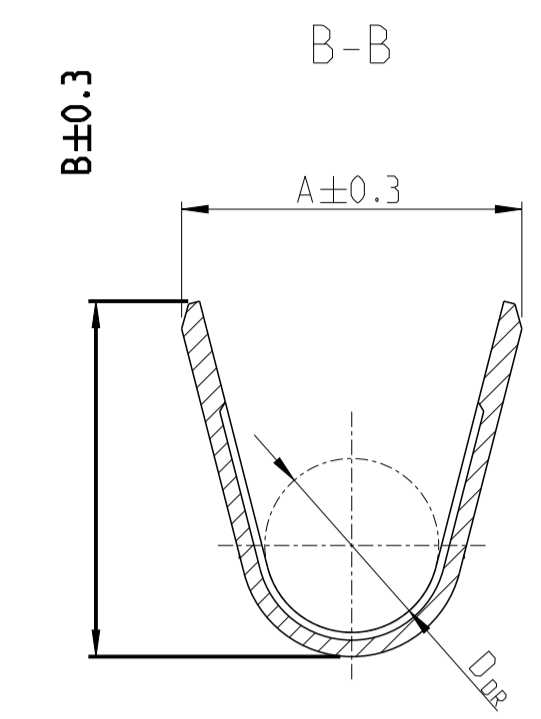
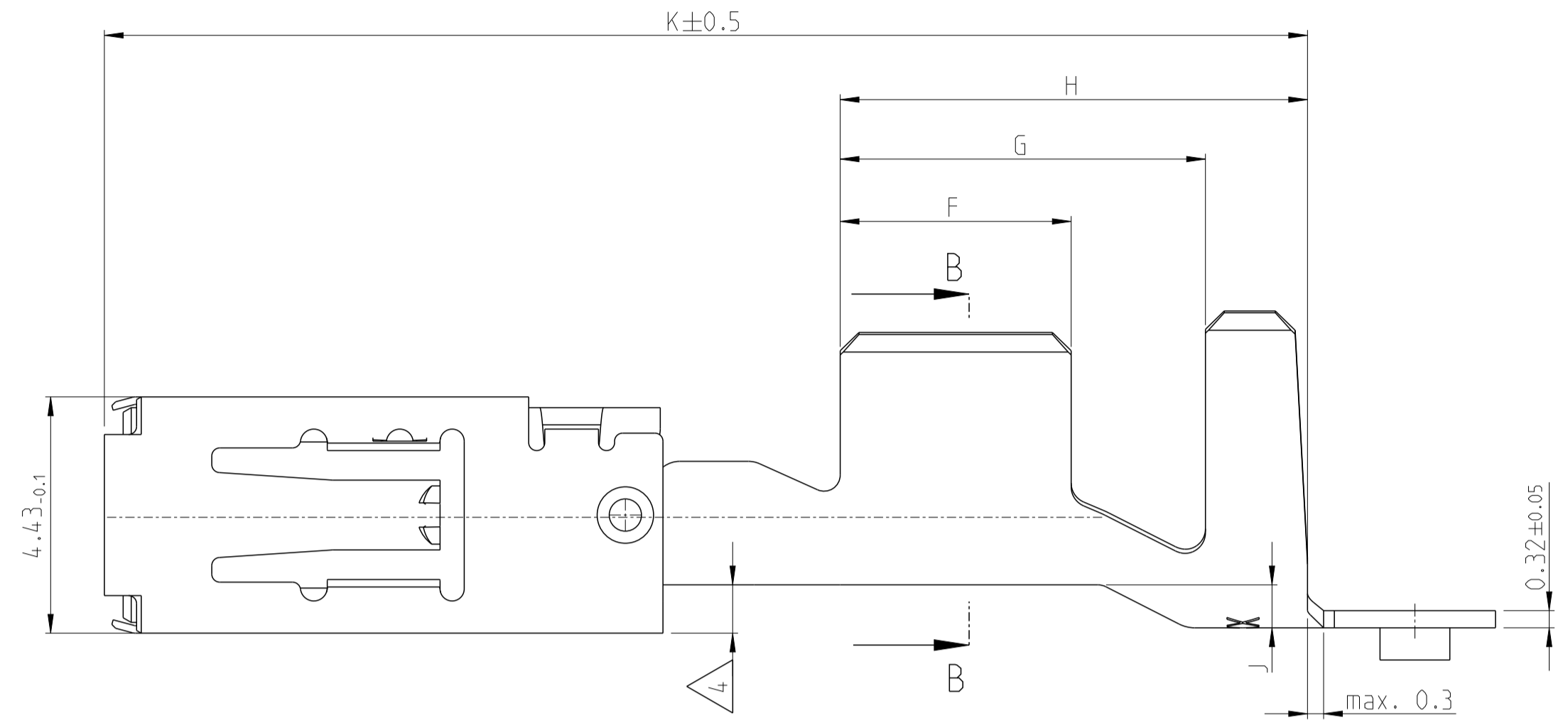


REVISIONS				
P	LTN	DESCRIPTION	DATE	APVD
A		INITIAL RELEASE	25SEP2023	J.Z W.Z



### SERRATION DESIGN

DESIGN  
0.5 - 1.0mm<sup>2</sup>

DESIGN  
1.5 - 2.5mm<sup>2</sup>  
12 AWG

- NOTES:
- 1 MATING PART SEE INTERFACE DRAWING  
TE-NO.: 114-18230-002
  - 2 SURFACE: PRE TIN PLATED 1 TO 3 μm
  - 3 DOUBLE CRIMPS ARE ONLY POSSIBLE WITH APPLICATORS AUTHORIZED BY TE (NO HAND TOOL) SUITABLE TOOLS ON REQUEST
  - 4 GAUGE INSPECTION
  - 5 DETAILS OF DESIGN ARE LEFT TO MANUFACTURER
  - 6 PUNCHING OIL RAZIOL CLF 11 SG
  - 7 DIFFERENT FORM AND NUMBER OF THE SERRATIONS POSSIBLE
  - 8 PN is Suzhou Version PN. similar with Global PN

1-2473872-1	CUNIST X100CN18-8	PRE TIN PLATED	1.5-2.5	2.2-3.0	3.6	3.8	1.7	4.6	5.0	2.6	3.5	5.1	6.7	0.3	20.2	0.56	114-18148	1-968851-1
1-2473873-1		PRE TIN PLATED	0.5-1.0	1.4-2.1	2.5	2.7	1.2	3.3	3.5	1.8	3.0	4.6	6.2	0.2	20.2	0.51		1-968849-1
ORDER-NO. STRIP-FORM 	BODY SPRING		WIRE SIZE RANGE mm <sup>2</sup>	INSULATION DIAMETER mm	A	B	D <sub>DR</sub>	C	E	D <sub>ISO</sub>	F	G	H	J	K	WEIGHT g	APPLICATION TOOLS	SIMILAR WITH GLOBAL PN 
MATERIAL 	WIRE CRIMP				INSULATION CRIMP		STRIP FORM			CRIMP DIMENSIONS								

THIS DRAWING IS A CONTROLLED DOCUMENT.

DIMENSIONS: mm	TOLERANCES UNLESS OTHERWISE SPECIFIED: ±0.2	APVD W. ZHANG 25SEP2023	NAME PRODUCT GROUP DRAWING FOR AMP MCP 2.8
MATERIAL	FINISH	WEIGHT	RESTRICTED TO

TE Connectivity

SCALE 10:1 SHEET 1 OF 1 REV A