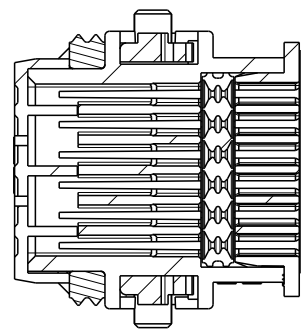
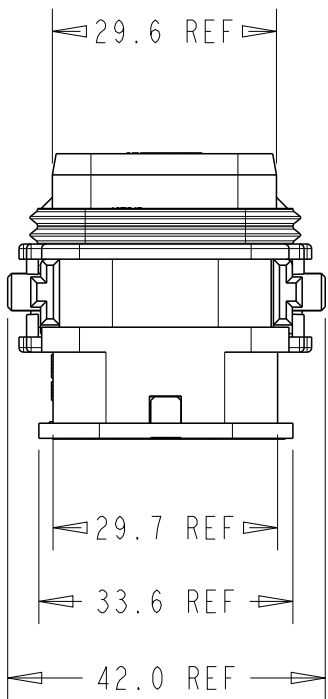
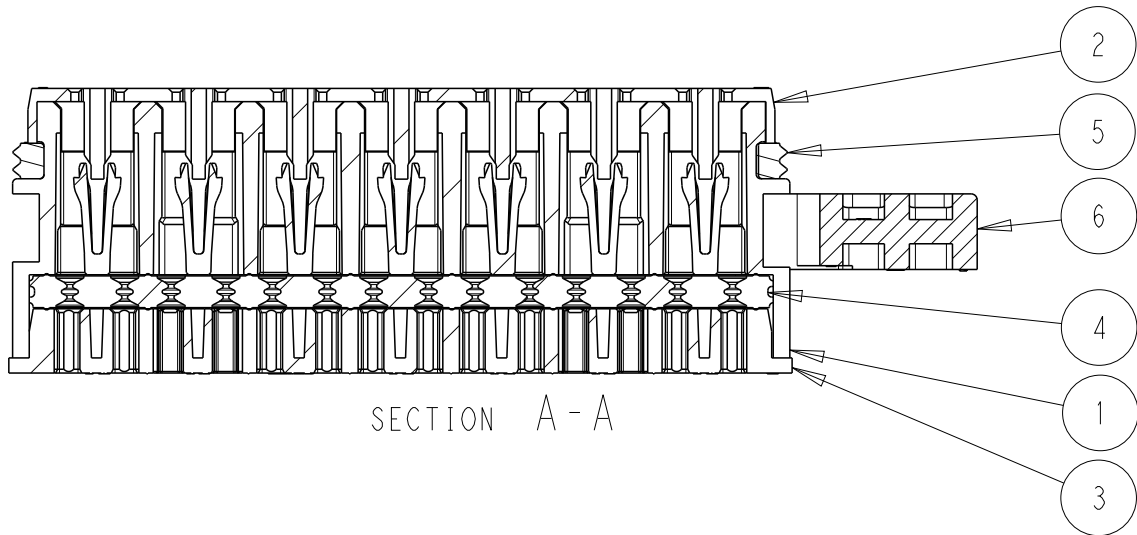
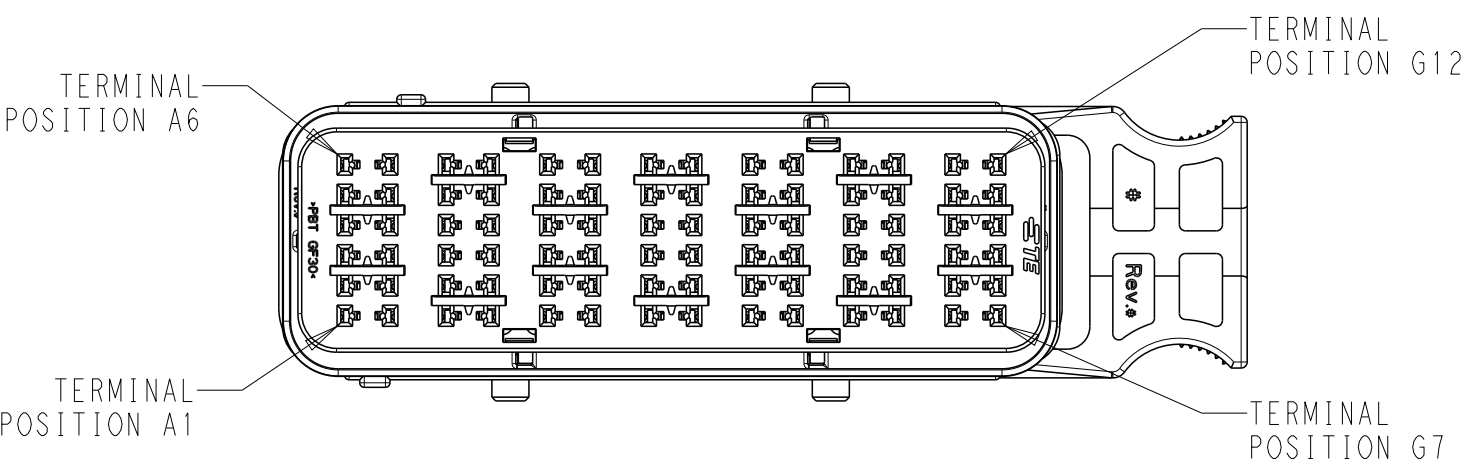
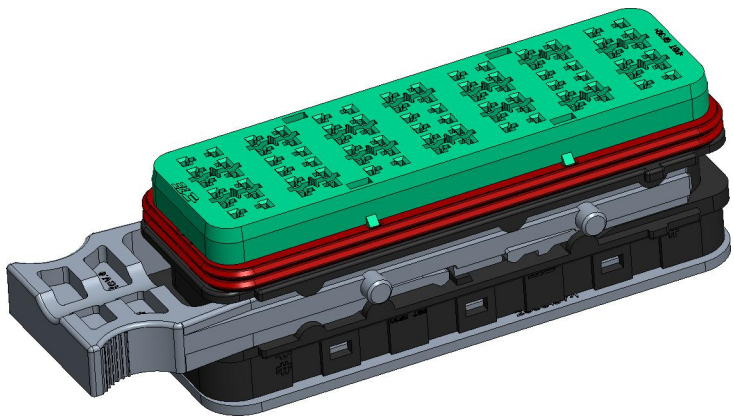
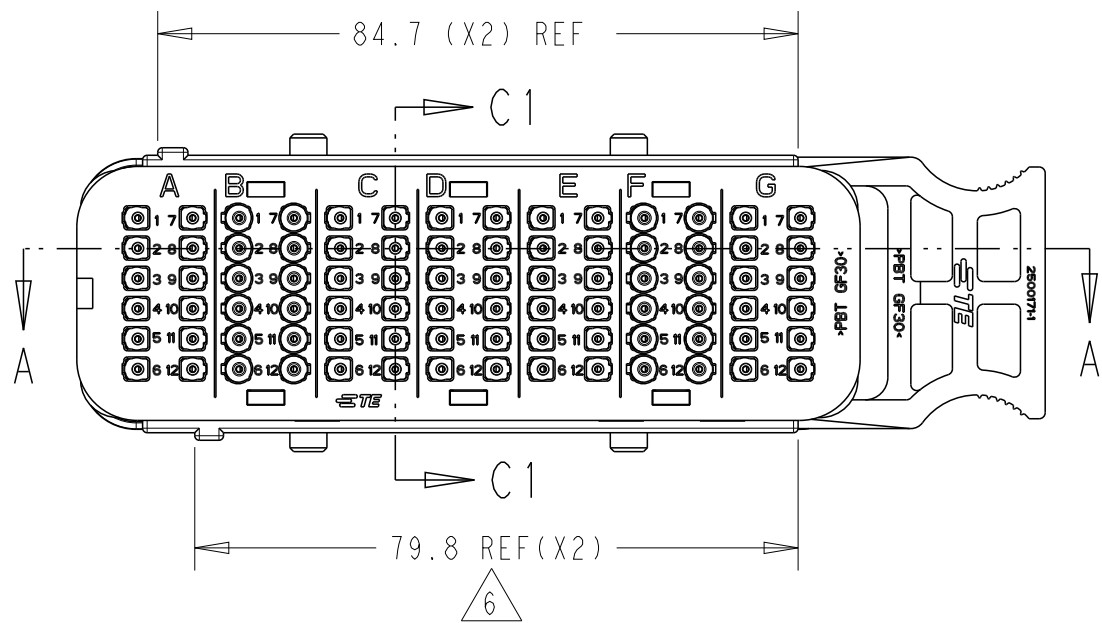
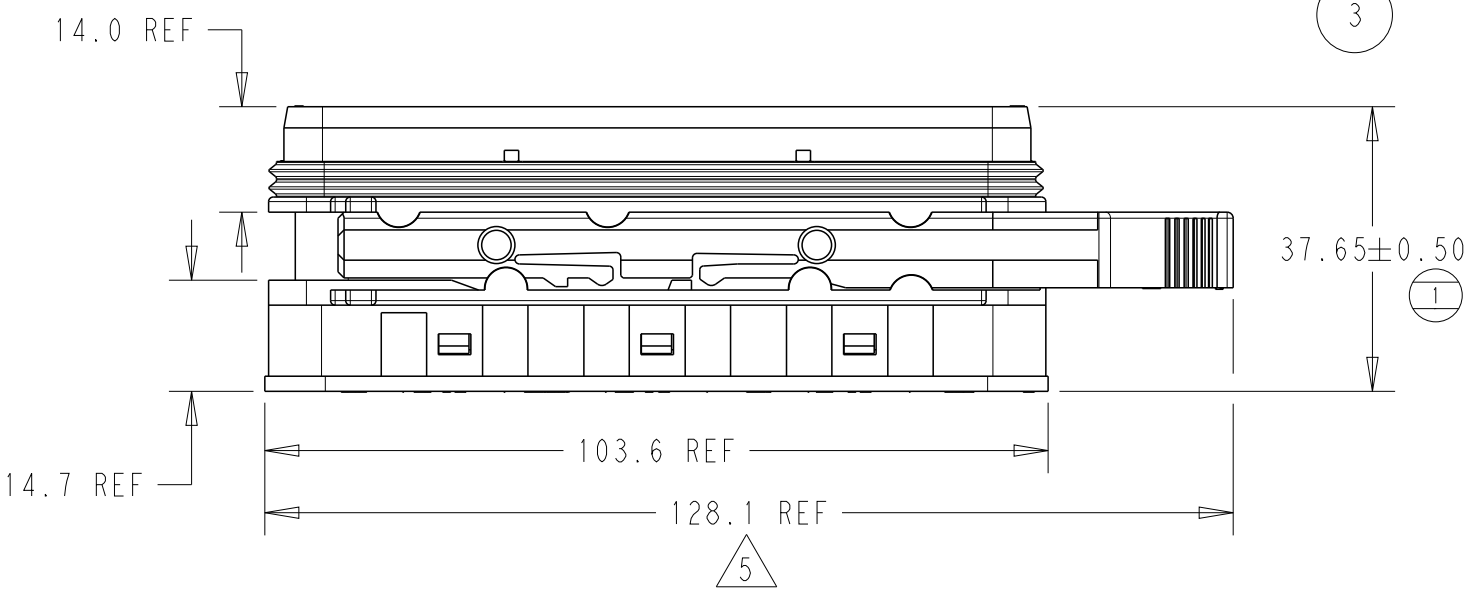


SRC2 84+0 (2.5) MAIN HOUSING BLACK

TPA IN FULL-LOCK (AS SHIPPED) POSITION
AND LATCH IN PARTIALLY OPEN POSITION

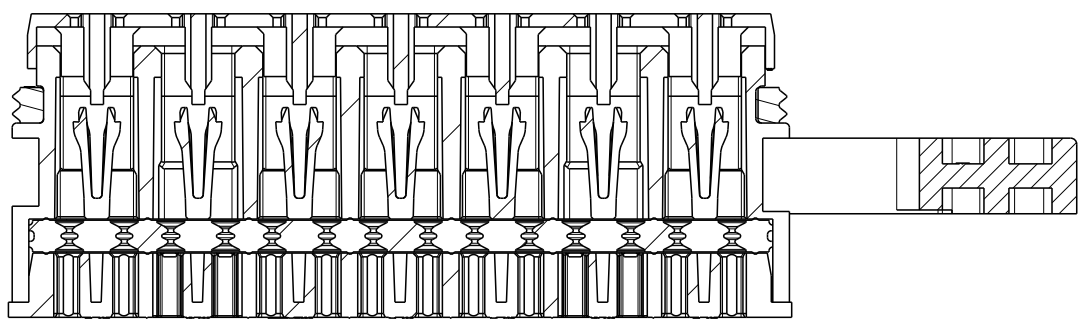
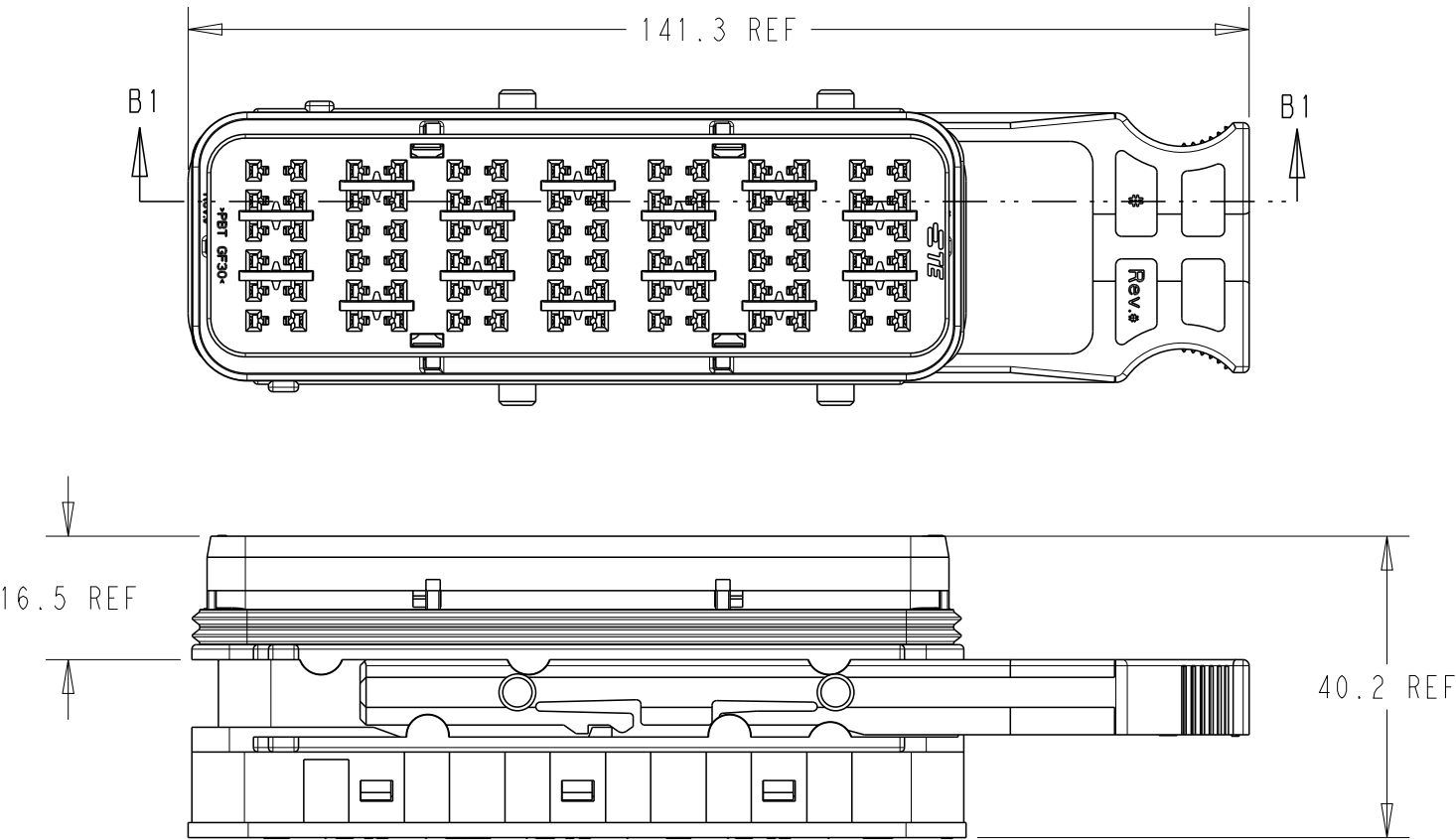


SECTION C1-C1



REVISIONS					
P	LTR	DESCRIPTION	DATE	DWN	APVD
	A3	ECO-20-009048	15JUL2020	MHS	MT
	B	PCN-21-123224	23DEC2021	DRK	AW

TPA IN PRE_LOAD POSITION
AND LATCH IN OPEN POSITION



SECTION B1-B1

- NOTES:
- MATERIALS:
HOUSINGS: POLYESTER (PBT), GLASS FILLED, UL 94 HB
SEAL: SILICONE RUBBER
 - VARIATION OF SHADE WITHIN OR BETWEEN BATCHES, OR DISCOLORATION IS ACCEPTABLE
 - MX150 RECEPTACLE TERMINALS TO BE USED WITH THESE ASSEMBLIES IN ALL CAVITIES CRIMPED WITH CABLE INSULATION OUTER DIAMETER IN THE RANGE 1.5mm TO 2.7mm
 - SRC RECEPTACLE TERMINALS MAY BE USED WITH THESE ASSEMBLIES IN CAVITIES B AND F CRIMPED WITH 2.5mm² (13AWG) CABLE INSULATION OUTER DIAMETER IN THE RANGE 2.7mm TO 3.0mm
- 5 PACKAGING SPECIFICATION: TEC-107-160003-02, LATCH SHIPPED IN PARTIALLY OPEN POSITION
- 6 MATES WITH SRC2 84 PIN 2.5 BLADE HOUSING ASSEMBLY (BLACK) PN 2500025-1 (OLD PN 937928425)
7. CONDUIT INTERFACE OPTIONS REFER TO 2500034

6	SLIDING LATCH	1	BLACK
5	FEMALE FRONT SEAL	1	RED
4	FEMALE BACK SEAL	1	LIGHT BLUE
3	FEMALE REAR COVER	1	BLACK
2	FEMALE FRONT COVER	1	GREEN
1	FEMALE HOUSING	1	BLACK
No.	DESCRIPTION	QTY.	COLOR
BILL OF MATERIAL			

ACCEPTABLE CABLE INSULATION Ø RANGES (mm) - NOTE 3 & 4 (COMBINATIONS OF CABLES PER NOTES 3 & 4 ALLOWED IN B & F)						
CAVITY SET						
A	B	C	D	E	F	G
1.5 - 2.7	1.5 - 3.0	1.5 - 2.7	1.5 - 2.7	1.5 - 2.7	1.5 - 3.0	1.5 - 2.7
932878425		2500009-1				
OLD P/N		PART NO				

THIS DRAWING IS A CONTROLLED DOCUMENT.		DWN MANOHAR H S 15JUL2020	TE Connectivity			
DIMENSIONS: mm		CHK M TRULL 15JUL2020				
TOLERANCES UNLESS OTHERWISE SPECIFIED: 0 PLC ± 1 PLC ± 2 PLC ± 3 PLC ± 4 PLC ± ANGLES ± FINISH -		APVD M TRULL 15JUL2020	NAME SRC2 84 PIN FEMALE RECEPTACLE HSG ASSY 2.5			
MATERIAL		PRODUCT SPEC TEC-108-160018	SIZE A2		CAGE CODE 00779	DRAWING NO C-2500009
		APPLICATION SPEC TEC-114-160015	RESTRICTED TO			
		WEIGHT	SCALE 5:1		SHEET 1 OF 1	REV B
		CUSTOMER DRAWING				