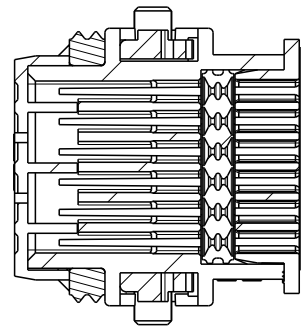
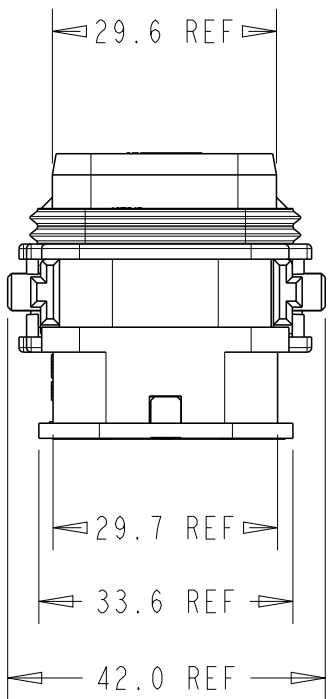
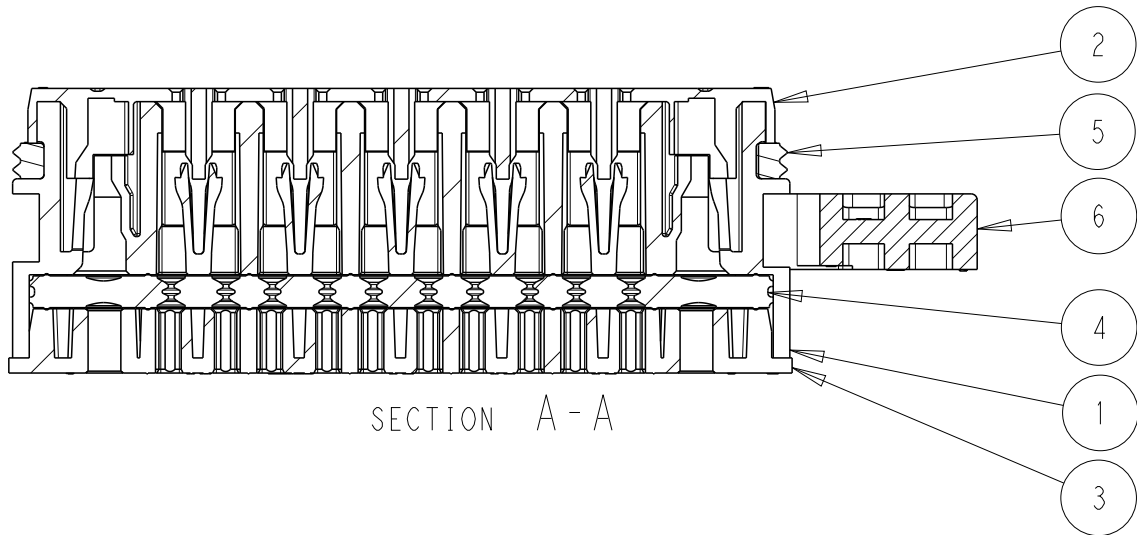
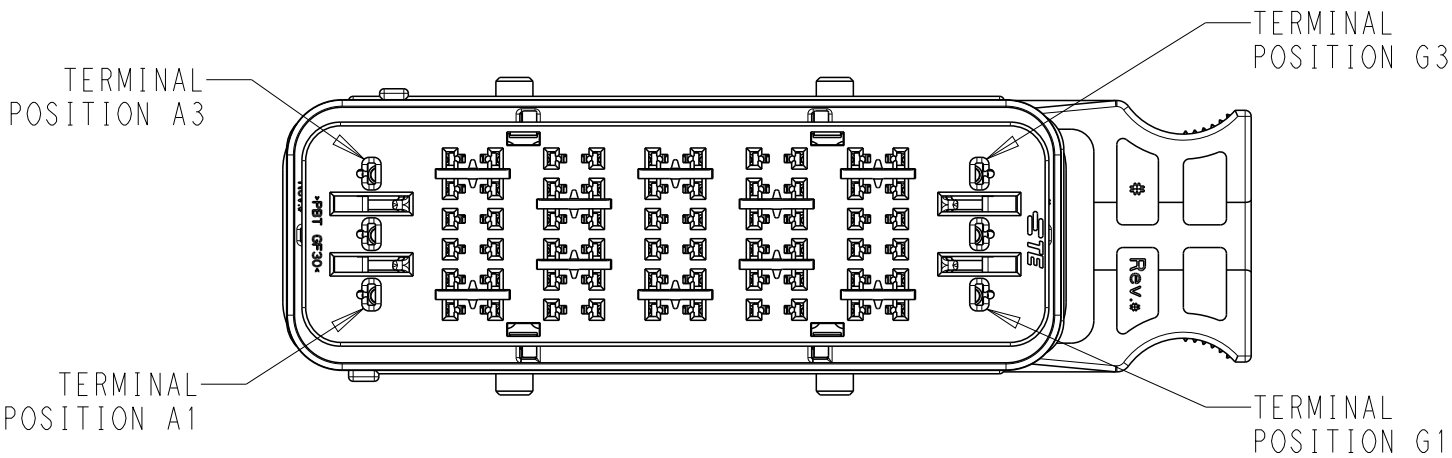
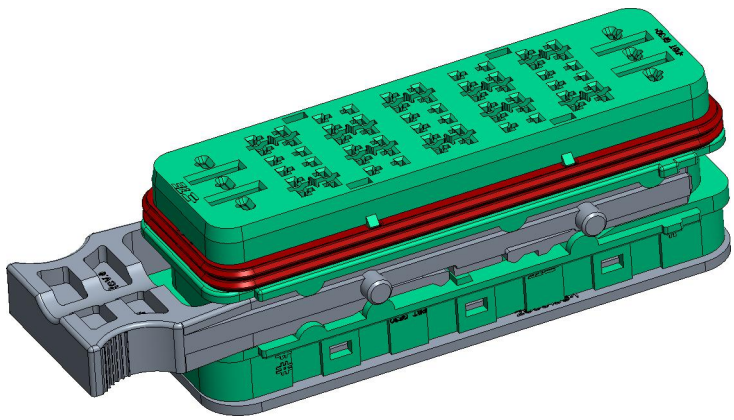
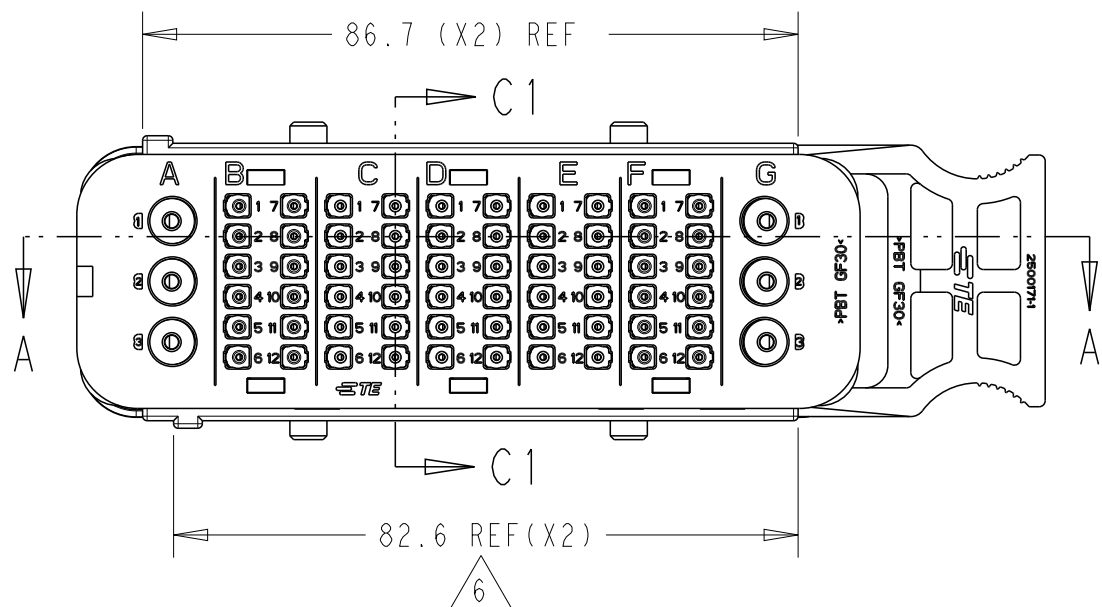
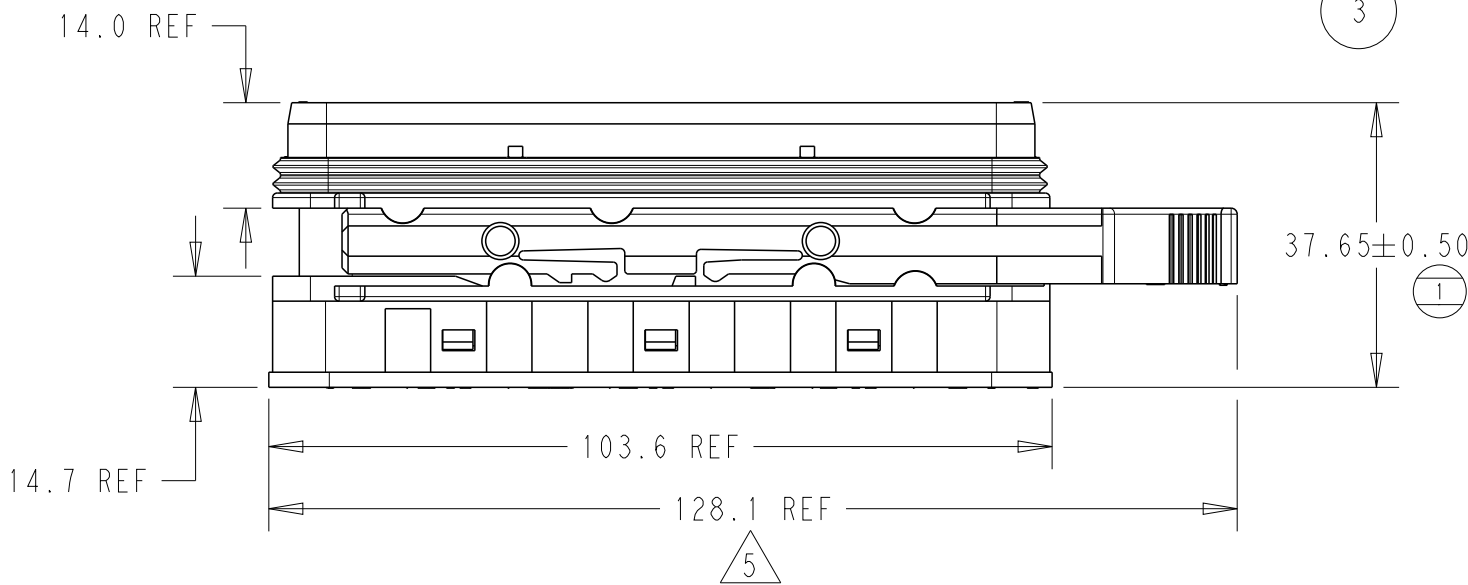


SRC POWER 60+6AG MAIN HOUSING GREEN

TPA IN FULL-LOCK (AS SHIPPED) POSITION
AND LATCH IN PARTIALLY OPEN POSITION

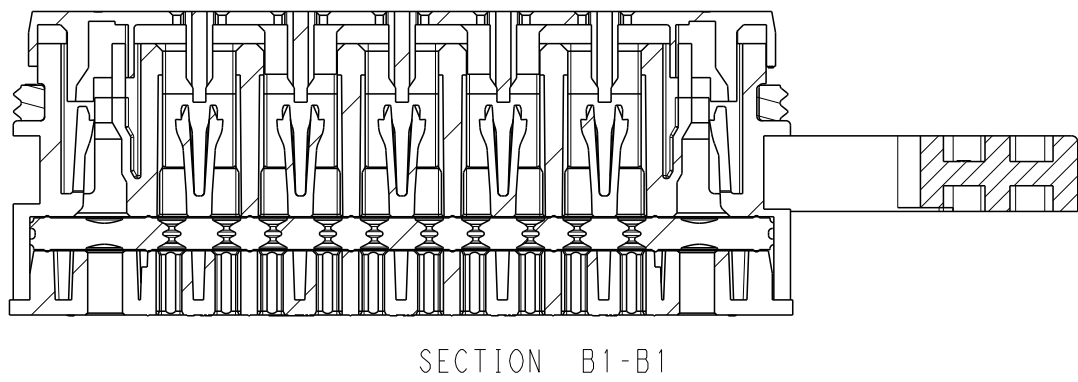
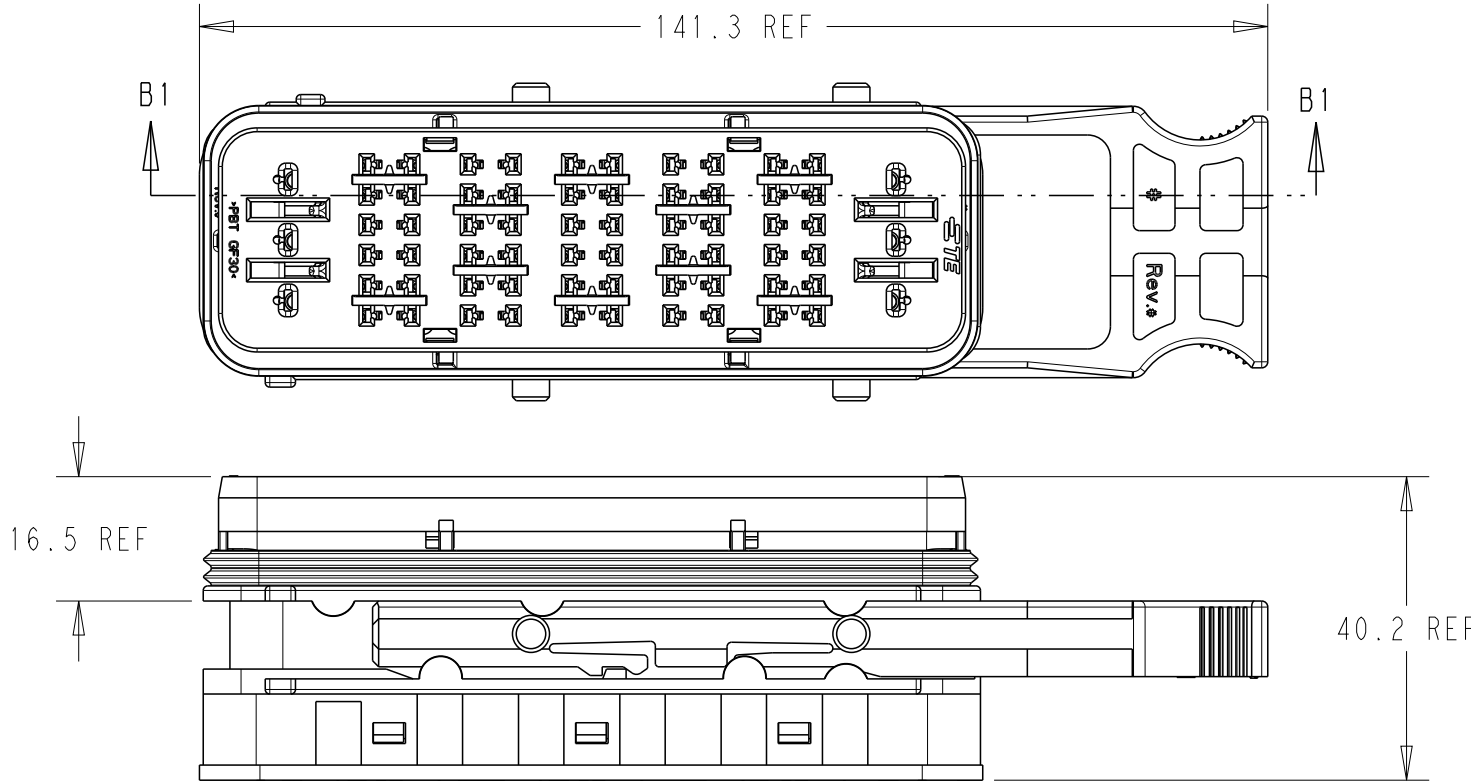


SECTION C1-C1



REVISIONS					
P	LTR	DESCRIPTION	DATE	DWN	APVD
	A3	ECO-20-009048	15JUL2020	MHS	MT
	B	PCN-21-123224	23DEC2021	DRK	AW

TPA IN PRE-LOAD POSITION
AND LATCH IN OPEN POSITION




SECTION B1-B1

- NOTES:
- MATERIALS:
HOUSINGS: POLYESTER (PBT), GLASS FILLED, UL 94 HB
SEAL: SILICONE RUBBER
 - VARIATION OF SHADE WITHIN OR BETWEEN BATCHES, OR DISCOLORATION IS ACCEPTABLE
 - MX150 RECEPTACLE TERMINALS TO BE USED WITH THESE ASSEMBLIES IN CAVITIES B,C,D, E AND F, CRIMPED WITH CABLE INSULATION OUTER DIAMETER IN THE RANGE 1.5mm TO 2.7mm
 - MX150L RECEPTACLE TERMINALS TO BE USED WITH THESE ASSEMBLIES IN CAVITIES A AND G, CRIMPED WITH CABLE INSULATION OUTER DIAMETER IN THE RANGE 3.0mm TO 5.0mm
- 5 PACKAGING SPECIFICATION: TEC-107-160003-02, LATCH SHIPPED IN PARTIALLY OPEN POSITION
- 6 MATES WITH SRC 60+6AG POWER BLADE HOUSING ASSEMBLY (GREEN) PN 2500029-1 (OLD PN 938506006)
- CONDUIT INTERFACE OPTIONS REFER TO 2500034
 - PRESENCE OF TE CONNECTIVITY LOGO OPTIONAL ON FRONT COVER, REAR COVER, SLIDING LATCH AND HOUSING.

6	SLIDING LATCH	1	BLACK
5	FEMALE FRONT SEAL	1	RED
4	FEMALE BACK SEAL	1	LIGHT BLUE
3	FEMALE REAR COVER	1	BLACK
2	FEMALE FRONT COVER	1	GREEN
1	FEMALE HOUSING	1	GREEN
No.	DESCRIPTION	QTY.	COLOR
BILL OF MATERIAL			

ACCEPTABLE CABLE INSULATION Ø RANGES (mm) - NOTE 3 & 4						
CAVITY SET						
A	B	C	D	E	F	G
3.0 - 5.0	1.5 - 2.7	1.5 - 2.7	1.5 - 2.7	1.5 - 2.7	1.5 - 2.7	3.0 - 5.0

938496006	2500012-1
OLD P/N	PART NO

THIS DRAWING IS A CONTROLLED DOCUMENT.		DWN MANOHAR H S 15JUL2020	 TE Connectivity			
DIMENSIONS: mm		CHK M TRULL 15JUL2020				
TOLERANCES UNLESS OTHERWISE SPECIFIED:		APVD M TRULL 15JUL2020	NAME SRC2 FEMALE 60+6AG MIXED POWER GREEN			
0 PLC ± 1 PLC ± 2 PLC ± 3 PLC ± 4 PLC ± ANGLES ±		PRODUCT SPEC TEC-108-160018	SIZE A2			
MATERIAL -		APPLICATION SPEC TEC-114-160015	CAGE CODE 00779			
FINISH -		WEIGHT -	DRAWING NO C-2500012			
		CUSTOMER DRAWING	RESTRICTED TO -			
			SCALE 5:1			
			SHEET 1 OF 1			
			REV B			