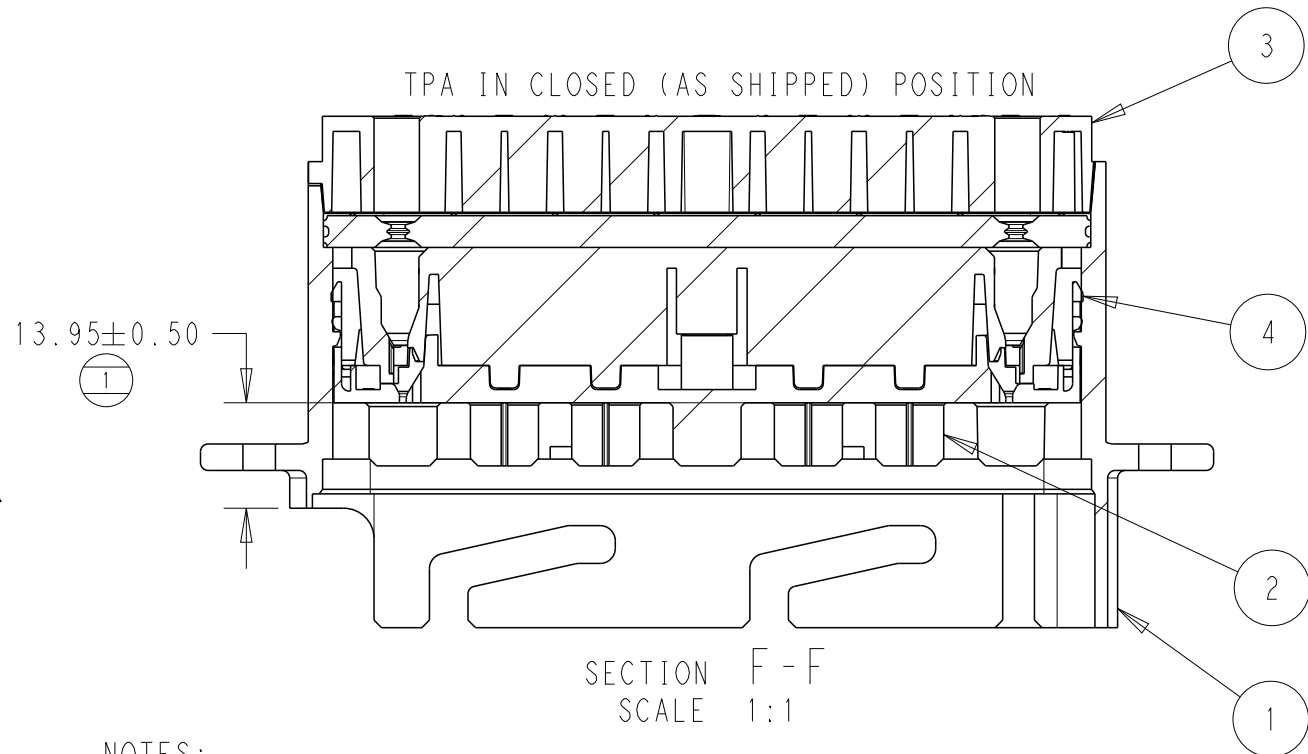
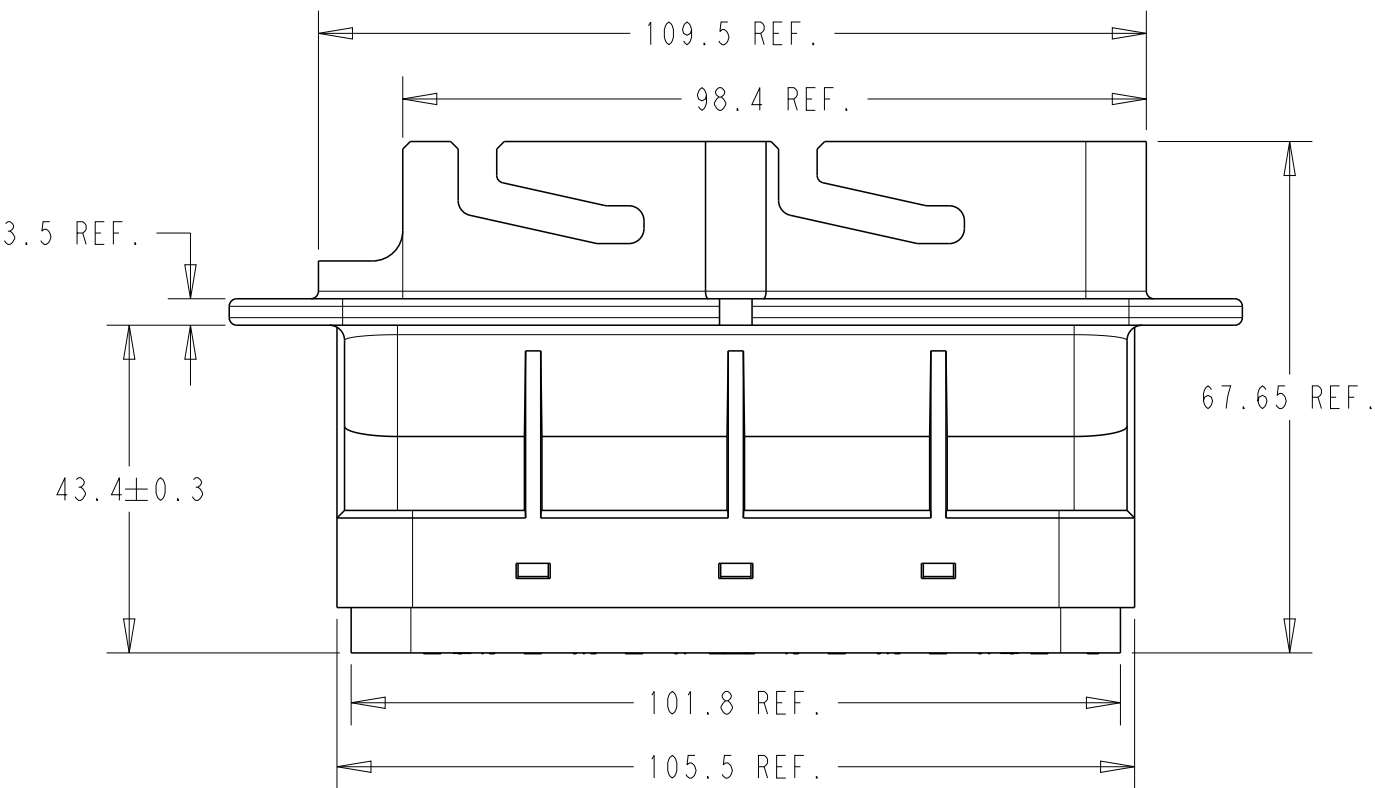
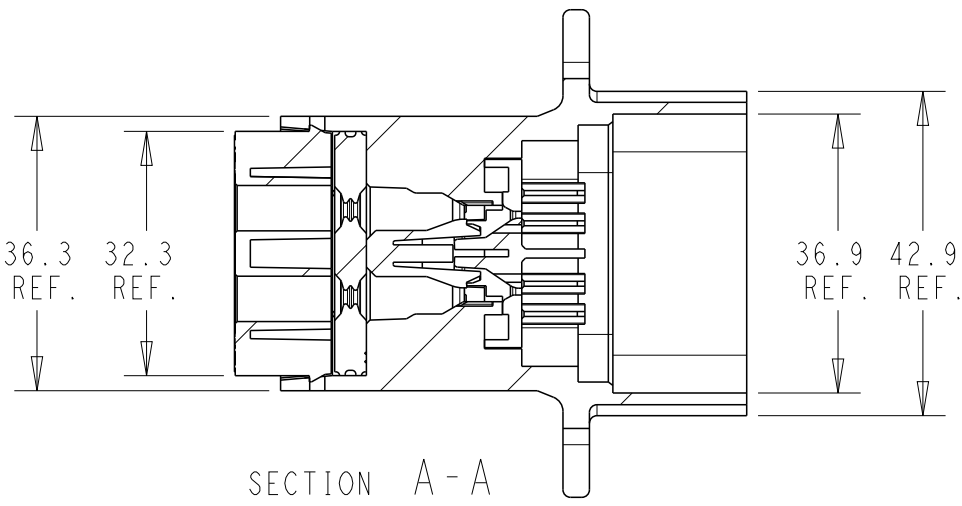
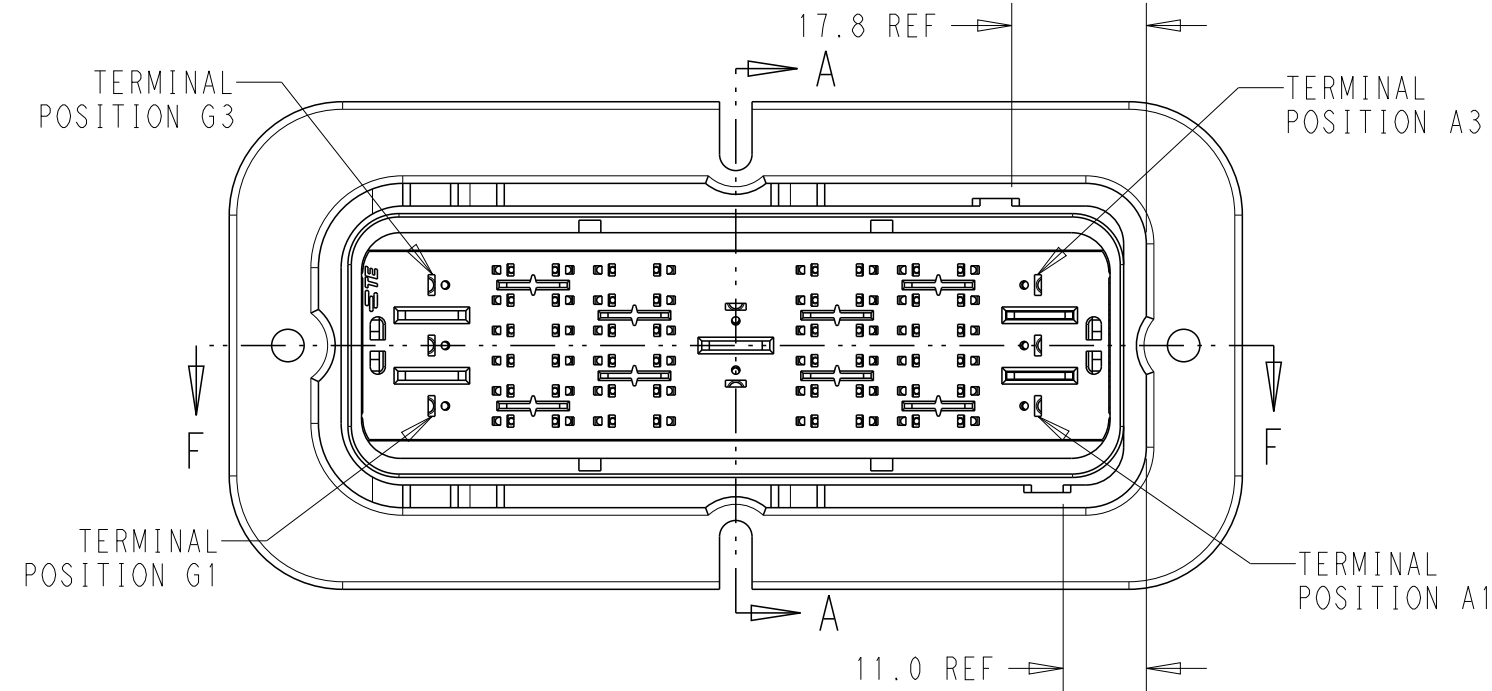
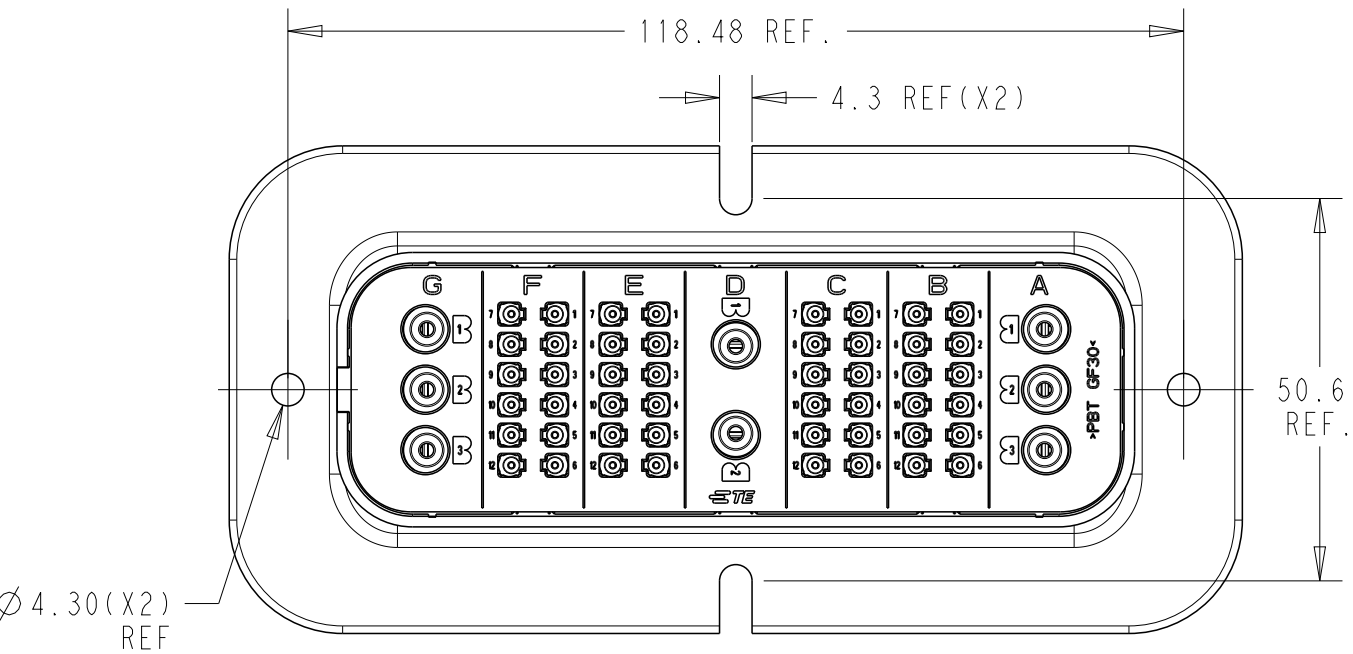


SRC POWER 48+8ADG MAIN HOUSING BLACK

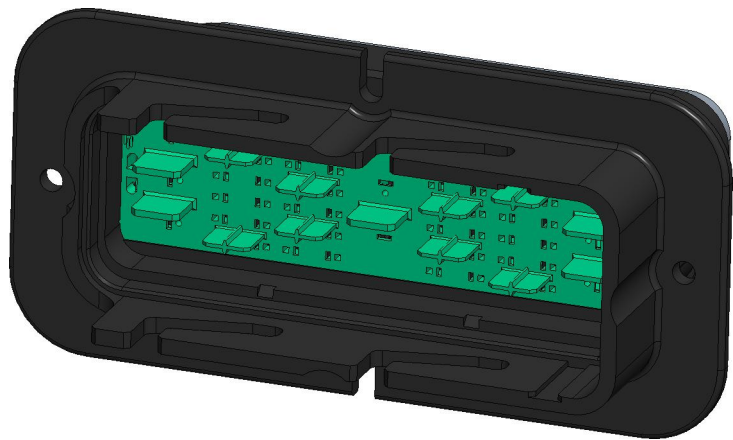


- NOTES:
1. MATERIALS:
HOUSINGS: POLYESTER (PBT), GLASS FILLED, UL 94 HB
SEAL: SILICONE RUBBER
 2. VARIATION OF SHADE WITHIN OR BETWEEN BATCHES, OR DISCOLORATION IS ACCEPTABLE
 3. MX150 BLADE TERMINALS TO BE USED WITH THESE ASSEMBLIES IN CAVITIES B,C,E, AND F, CRIMPED WITH CABLE INSULATION OUTER DIAMETER IN THE RANGE 1.5mm TO 2.7mm
 4. MX150L BLADE TERMINALS TO BE USED WITH THESE ASSEMBLIES IN CAVITIES A,D, AND G, CRIMPED WITH CABLE INSULATION OUTER DIAMETER IN THE RANGE 3.0mm TO 5.0mm
 5. PACKAGING SPECIFICATION: TEC-107-160003-02
 6. THIS SHEET: 2500020-1 (OLD PN 937924808) (48+8ADG) OPTION MATES WITH SRC2 POWER RECEPTACLE HOUSING ASSEMBLY (BLACK) PN 2500004-1 (OLD PN 850844808)
 7. FLANGE GASKET OPTION: REFER TO 2500032-1
 8. SUGGESTED DIMENSIONS FOR FLAT PLATE. CUSTOMER SHOULD VERIFY FIT IN THEIR OWN APPLICATION. ALL DIMENSIONS SYMMETRIC ABOUT CENTERLINES.
 9. CLEARANCE FOR M4 COUNTERSUNK HEADS RECOMMENDED IN THESE HOLES.
 10. PRESENCE OF TE LOGO OPTIONAL ON REAR COVER, FRONT COVER & HOUSING.

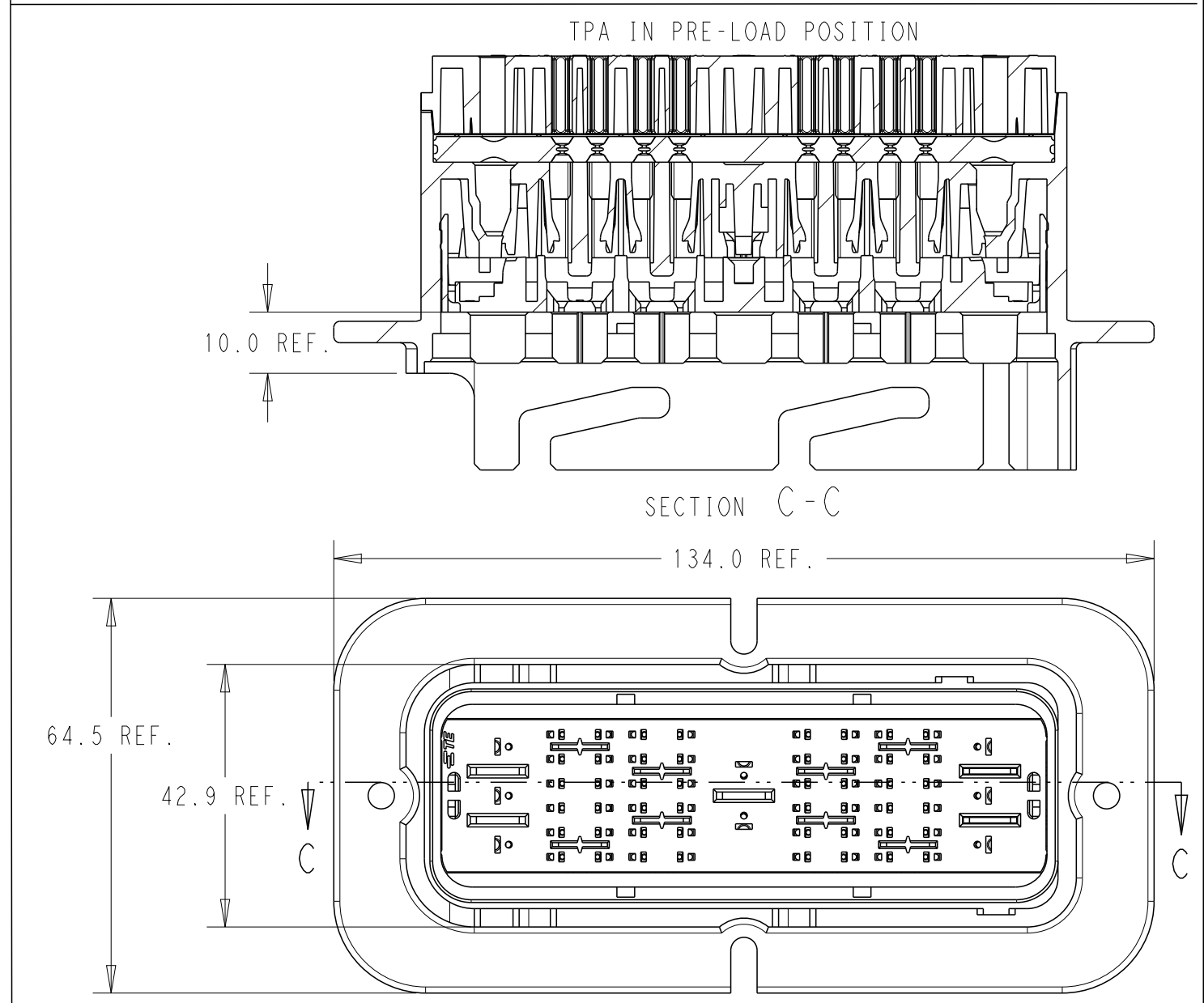
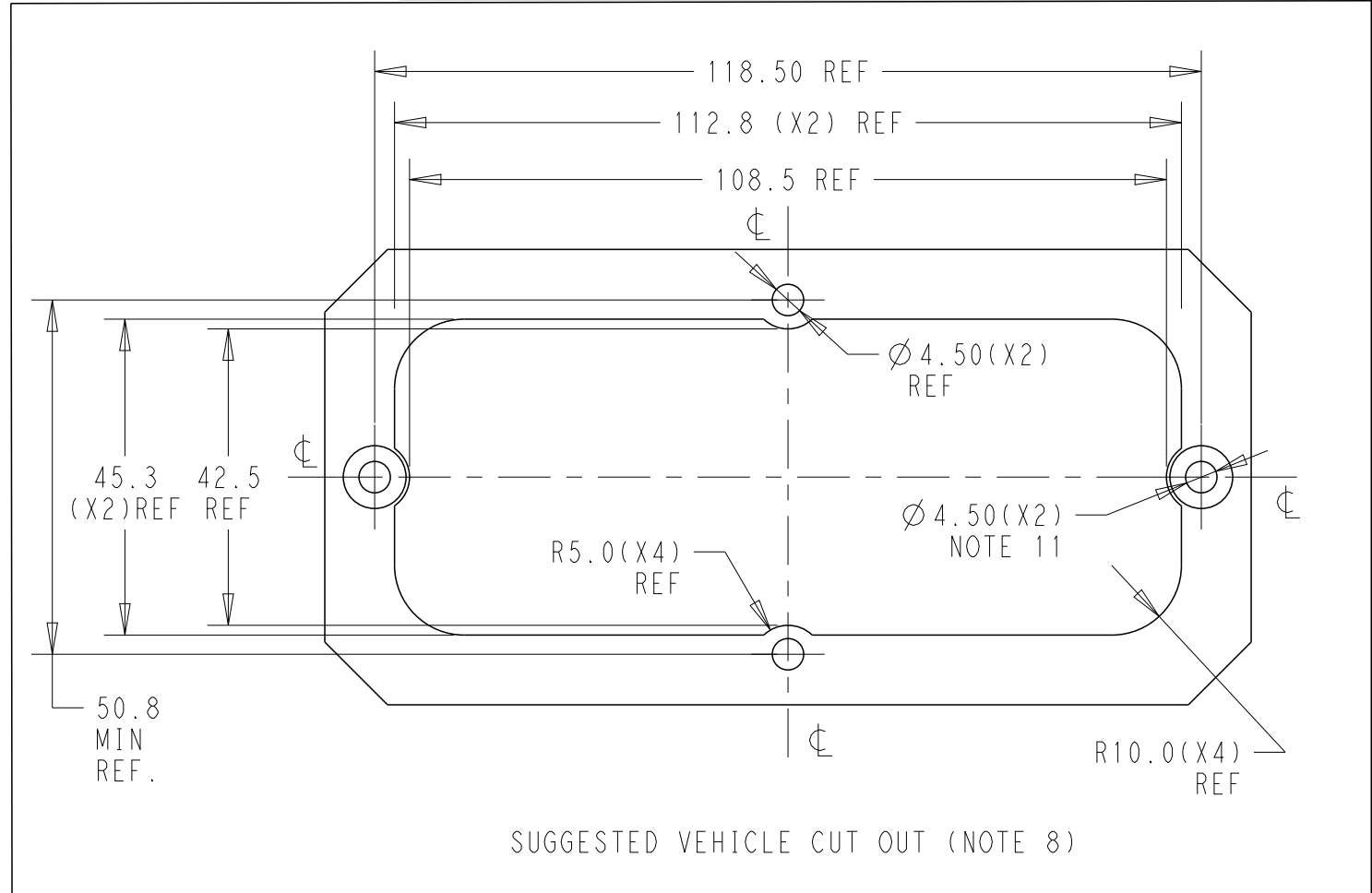


ACCEPTABLE CABLE INSULATION Ø RANGES (mm) - NOTE 3 & 4						
CAVITY SET						
G	F	E	D	C	B	A
3.0 - 5.0	1.5 - 2.7	1.5 - 2.7	3.0 - 5.0	1.5 - 2.7	1.5 - 2.7	3.0 - 5.0

4	MALE BACK SEAL	1	RUSTED RED
3	MALE REAR COVER	1	BLACK
2	MALE FRONT COVER(TPA)	1	GREEN
1	MALE HOUSING	1	BLACK
No.	DESCRIPTION	QTY.	COLOR
BILL OF MATERIAL			



REVISIONS					
P	LTR	DESCRIPTION	DATE	DWN	APVD
A3		ECO-20-009048	15JUL2020	MHS	MT
B		PCN-21-123224	23DEC2021	DRK	AW



937924808	2500020-1
OLD P/N	PART NO

THIS DRAWING IS A CONTROLLED DOCUMENT.		DWN MANOHAR H S 15JUL2020	TE Connectivity			
DIMENSIONS:		CHK M TRULL 15JUL2020				
mm		APVD M TRULL 15JUL2020	NAME SRC POWER 48+8ADG MALE BLADE HSG ASSY			
		PRODUCT SPEC TEC-108-160018	SIZE A2			
		APPLICATION SPEC TEC-114-160015				
MATERIAL		WEIGHT	CAGE CODE 00779		DRAWING NO C-2500020	RESTRICTED TO
-		-	SCALE 5:1		SHEET 1 OF 1	REV B