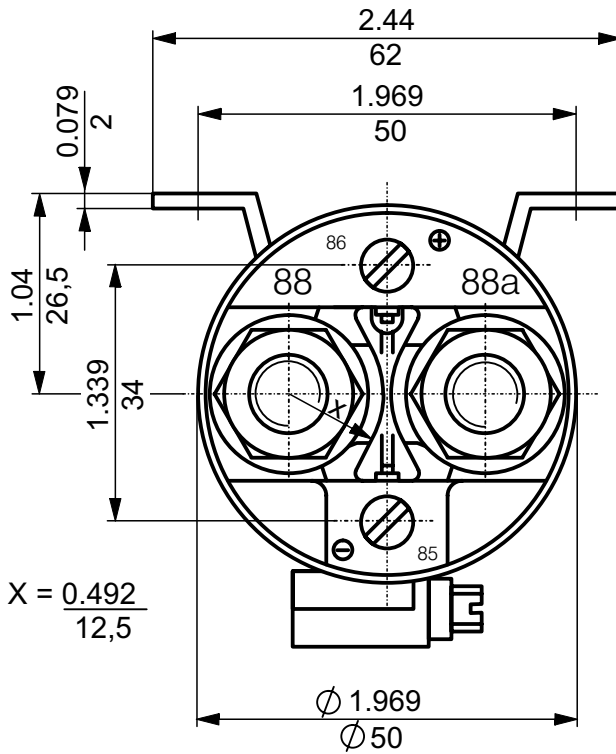
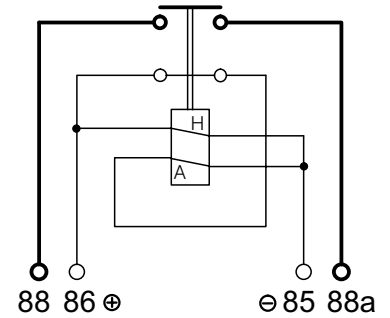


**300 AMP POWER RELAY ( 28 VDC)**  
 ADJUSTABLE SIDE MOUNTING ENVIRONMENTALLY SEALED  
 REPLACEABLE BARRIER

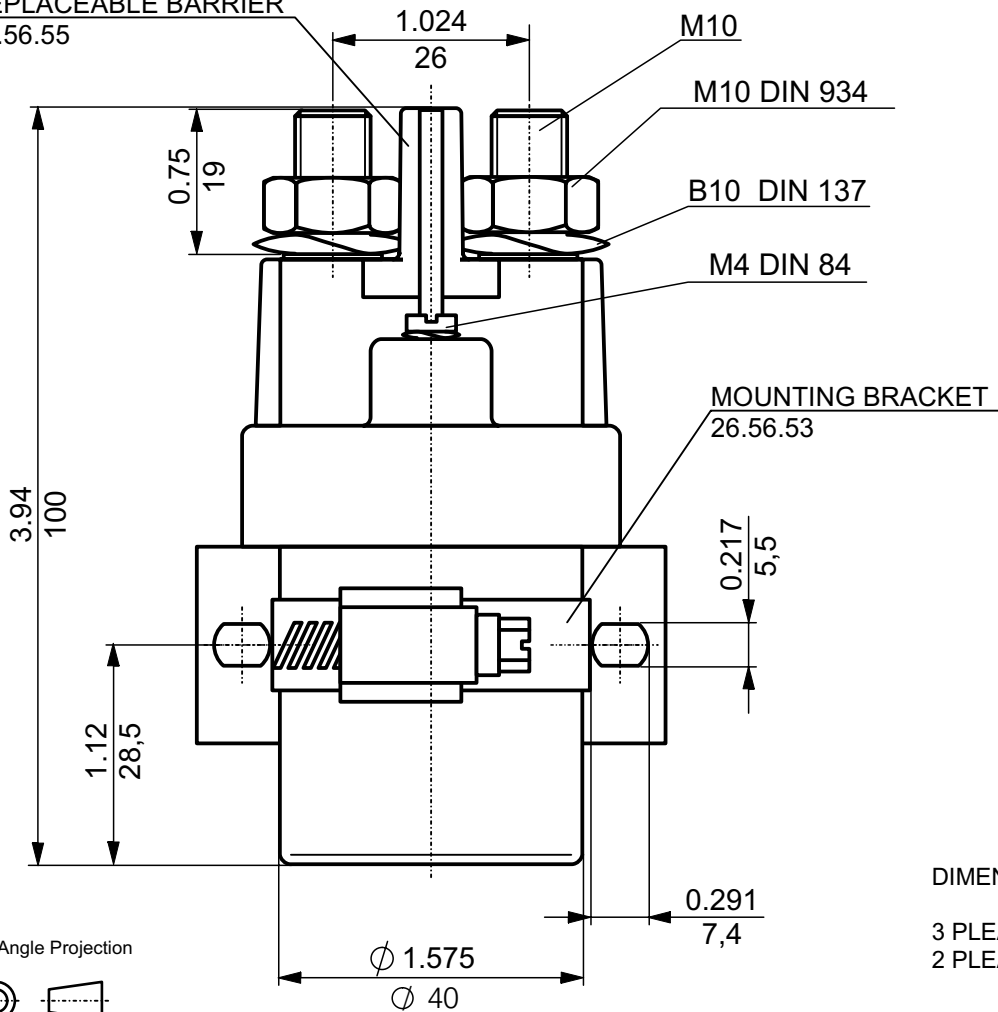


**CIRCUIT**



H = HOLDING COIL  
 A = PULL IN COIL

REPLACEABLE BARRIER  
 26.56.55



Third Angle Projection



**DIMENSIONAL TOLERANCES**

3 PLEACE DECIMAL  $\pm 0.010$   
 2 PLEACE DECIMAL  $\pm 0.03$   
 ANGULAR  $\pm 0^{\circ}30$

|        |        |        |  |              |
|--------|--------|--------|--|--------------|
| 1994   | Date   | Name   | Inch<br>mm                                   | Scale<br>1:1 |
| Design | 25.02. | S.Paul |  |              |
| Check  | 25.02. | Grupp  | General Tolerances<br>DIN 7168 m<br>ISO 2768 |              |
| Appro  |        |        |  |              |



Drawing No.  $\cong$  Order No.

**26.56.36**

