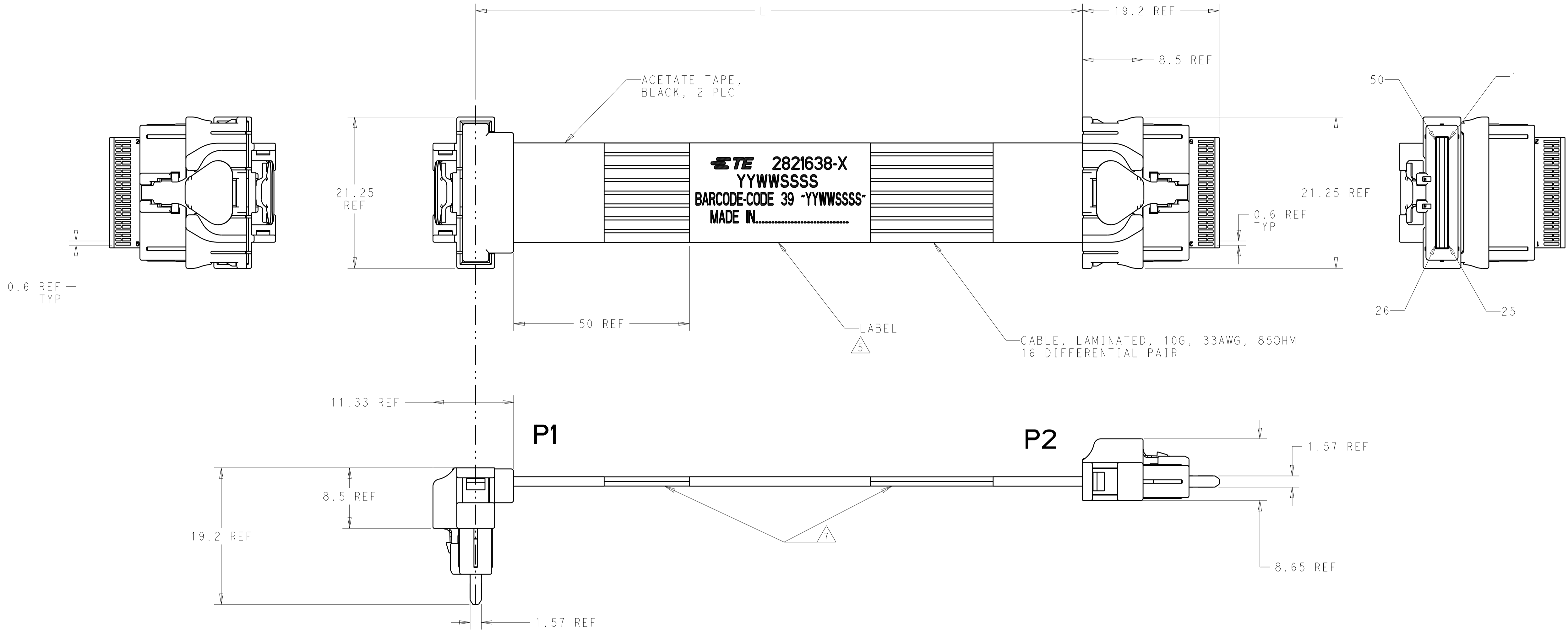


REVISIONS				
P.	LTR.	DESCRIPTION	DATE	APP'D.
A		INITIAL RELEASE ECO-18-006327	23APR2018	JR GG



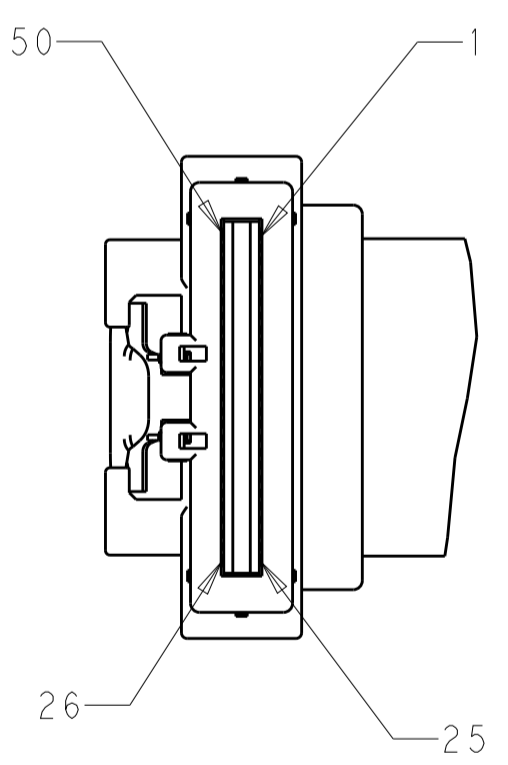
- CABLE ASSEMBLY TO BE TESTED FOR OPENS, SHORTS AND WIRING MAPPING. CABLES ARE ALSO TO BE TESTED FOR SIGNAL INTEGRITY. 10% OF PRODUCT TO BE TESTED FOR SIGNAL INTEGRITY.
- ALL MATERIALS, COMPONENTS AND PROCESS SHALL COMPLY WITH TEC-138-702. (CONTAINS NO BANNED OR RESTRICTED SUBSTANCES).
- SEE SHEET 2 FOR WIRING SCHEMATIC.
- MINIMUM BEND RADIUS OF THE CABLE = R3mm IN THE CABLE THICKNESS AXIS ONLY. MIN BEND RADIUS DOES NOT APPLY TO CABLE BENT IN THE WIDTH AXIS.

5 LABEL INFORMATION:

TE	2821638-X	TE LOGO & TE P/N
	YYWWSSSS	DATE CODE AND SERIAL NUMBER
BARCODE	- CODE 39 "YYWWSSSS"	
MADE IN	.....	COUNTRY OF ORIGIN

6. CABLE ASSEMBLIES ARE INDIVIDUALLY PACKAGED IN A CLEAR PLASTIC TUBE, SEALED ON BOTH ENDS.

8. CABLE TO HAVE UP TO A 20MM DIFFERENCE IN BUNDLE OR SECTION HEIGHT, MEASURED FROM A TABLE OR OTHER FLAT SURFACE TO OUTERMOST SECTION OF RAW CABLE. THIS DIMENSION APPLIES BETWEEN LABEL AND NEXT CLOSEST SECTION OF TAPE OR CONNECTOR. CABLE ASSEMBLY IS STILL TO CONFORM TO LENGTH DIMENSION AND TOLERANCE. NO REACH SvHC SHALL BE CONTAINED ABOVE THE THRESHOLD AS DEFINED IN REACH SvHC COMPLIANCE DEFINITION IN ANNEX A OF TEC-138-702.



1000±25	2821638-2
500±25	2821638-1
L	PART NO

THIS DRAWING IS A CONTROLLED DOCUMENT.		OWN J.G. BUSHEY 23JAN2017	TE Connectivity	
DIMENSIONS:		CHK G. GUTGOLD	NAME	
TOLERANCES UNLESS OTHERWISE SPECIFIED:		APP'D G. GUTGOLD	CABLE ASSEMBLY, SLIVER STRAIGHT TO RIGHT ANGLE 50 POSITION	
mm	0 PLC ±	PRODUCT SPEC	SIZE CAGE CODE DRAWING NO RESTRICTED TO	
	1 PLC ±	APPLICATION SPEC	A1 - C=2821638	
	2 PLC ±	WEIGHT	SCALE 3:1 SHEET 1 OF 2 REV A	
	3 PLC ±	CUSTOMER DRAWING		
	4 PLC ±			
	ANGLES ±			
MATERIAL	FINISH			

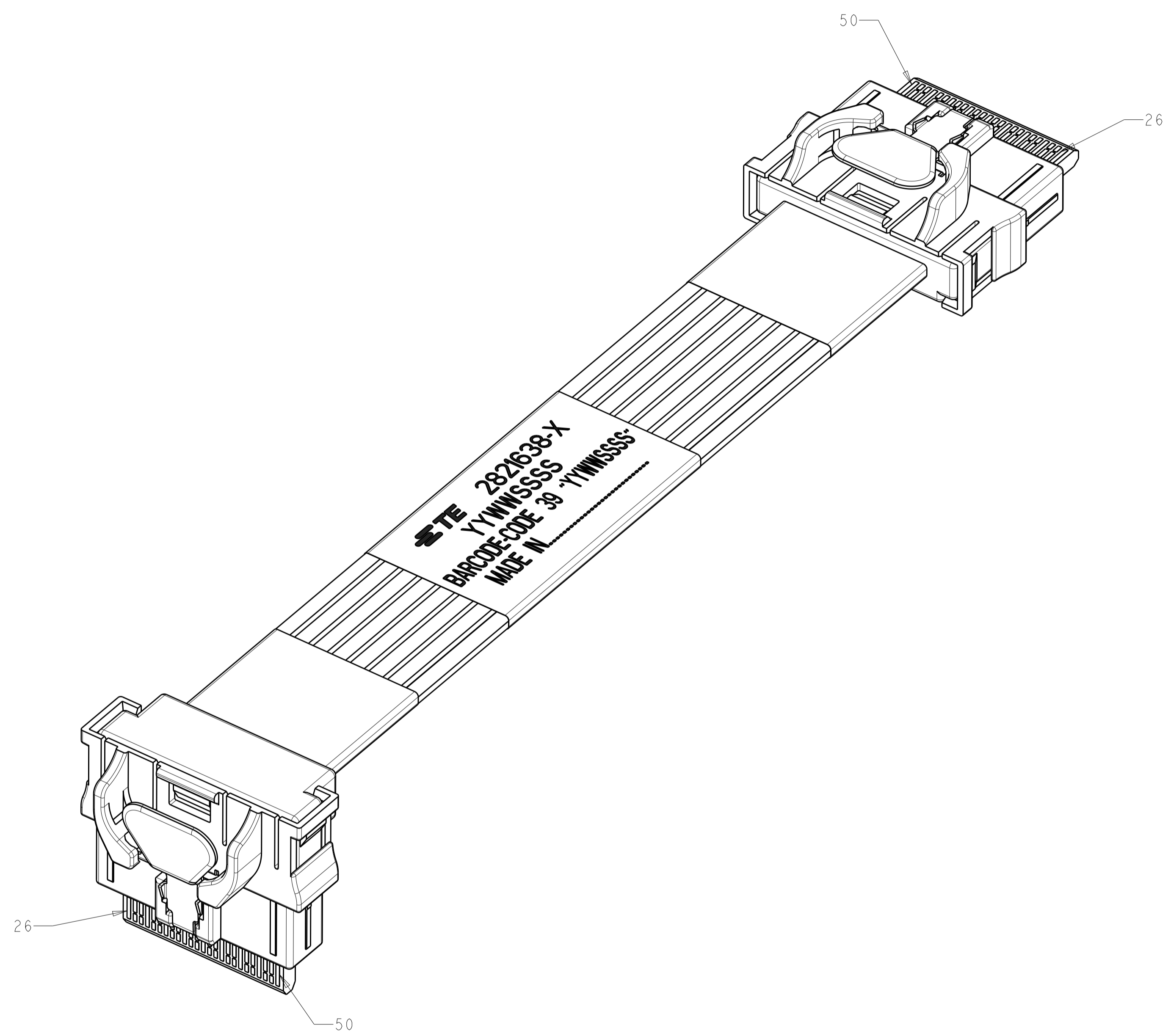
REVISIONS				
P.	LTN.	DESCRIPTION	DATE	APVD.
		SEE SHEET 1		

	P1		P2
	1	GND	25
PAIR 1	2	↔	24
	3	↔	23
PAIR 2	4	GND	22
	5	↔	21
PAIR 3	6	↔	20
	7	GND	19
PAIR 4	8	↔	18
	9	↔	17
PAIR 5	10	GND	16
	11	↔	15
PAIR 6	12	↔	14
	13	GND	13
PAIR 7	14	↔	12
	15	↔	11
PAIR 8	16	GND	10
	17	↔	9
PAIR 9	18	↔	8
	19	GND	7
PAIR 10	20	↔	6
	21	↔	5
PAIR 11	22	GND	4
	23	↔	3
PAIR 12	24	↔	2
	25	GND	1

	P1		P2
	26	GND	50
PAIR 9	27	↔	49
	28	↔	48
PAIR 10	29	GND	47
	30	↔	46
PAIR 11	31	↔	45
	32	GND	44
PAIR 12	33	↔	43
	34	↔	42
PAIR 13	35	GND	41
	36	↔	40
PAIR 14	37	↔	39
	38	GND	38
PAIR 15	39	↔	37
	40	↔	36
PAIR 16	41	GND	35
	42	↔	34
PAIR 13	43	↔	33
	44	GND	32
PAIR 14	45	↔	31
	46	↔	30
PAIR 15	47	GND	29
	48	↔	28
PAIR 16	49	↔	27
	50	GND	26

WIRING MAPPING



THIS DRAWING IS A CONTROLLED DOCUMENT.		DWN: J.G. BUSHEY 23JAN2017		
DIMENSIONS: mm		CHK: G. GUTGOLD	NAME: CABLE ASSEMBLY, SLIVER STRAIGHT TO RIGHT ANGLE 50 POSITION	
TOLERANCES UNLESS OTHERWISE SPECIFIED:		APVD: G. GUTGOLD	SIZE: A1	
0 PLC ±	1 PLC ±	PRODUCT SPEC	CAGE CODE: -	
2 PLC ±	3 PLC ±	APPLICATION SPEC	DRAWING NO: C=2821638	
4 PLC ±	ANGLES ±	WEIGHT	RESTRICTED TO: -	
MATERIAL: -	FINISH: -	CUSTOMER DRAWING	SCALE: 3:1	
			SHEET 2 OF 2	
			REV A	