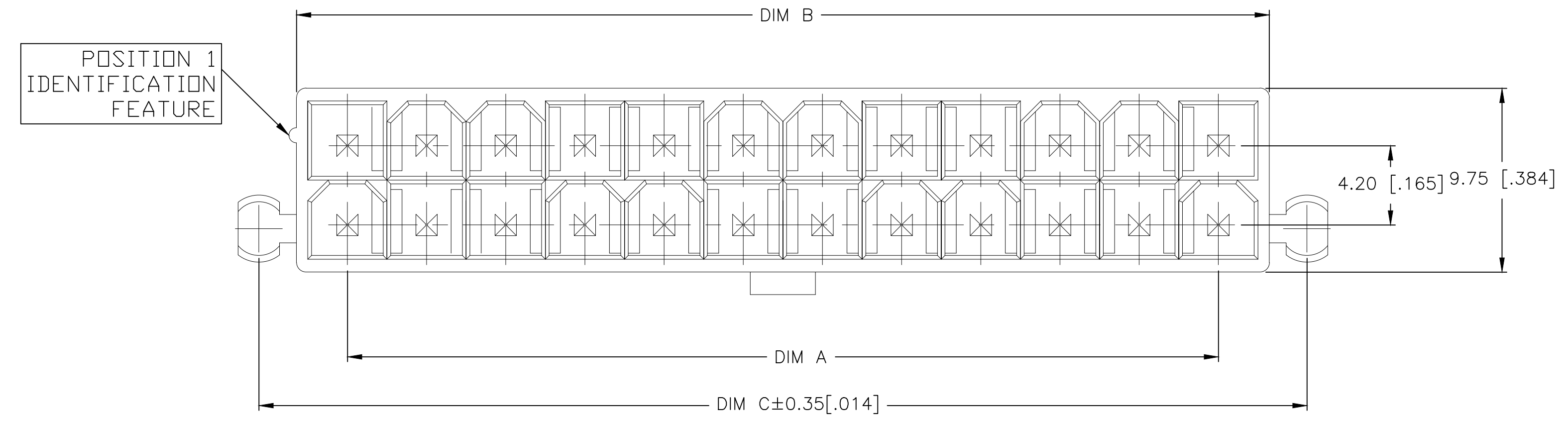
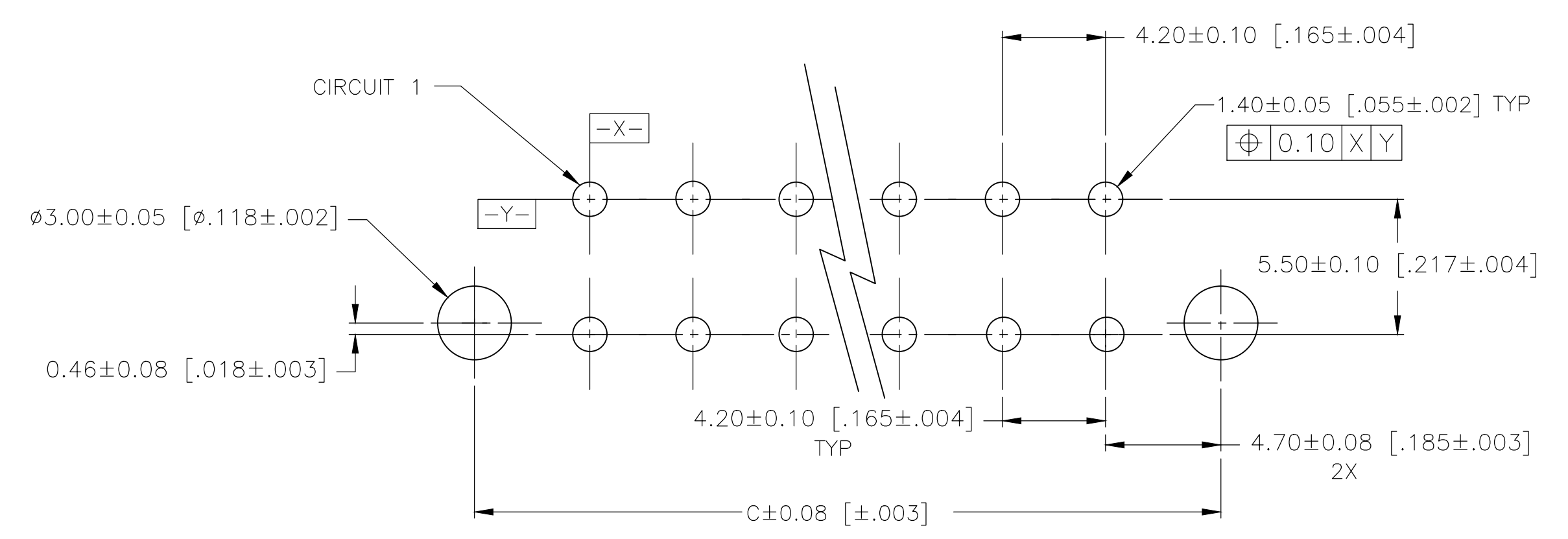
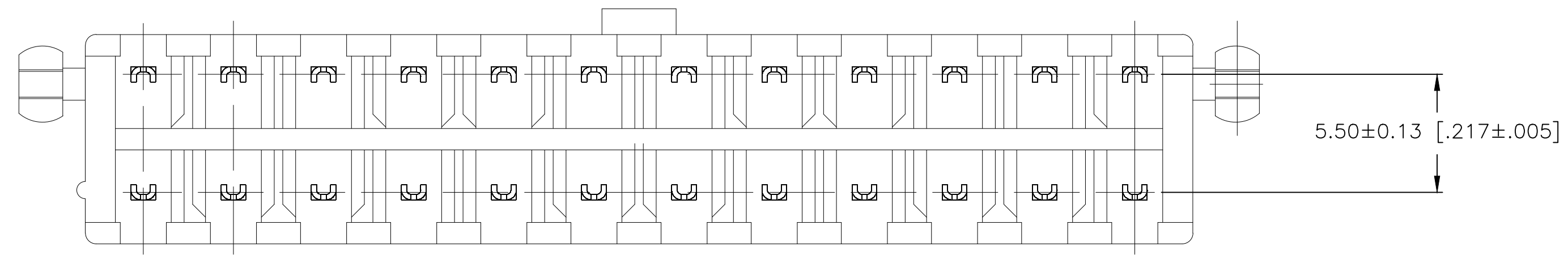
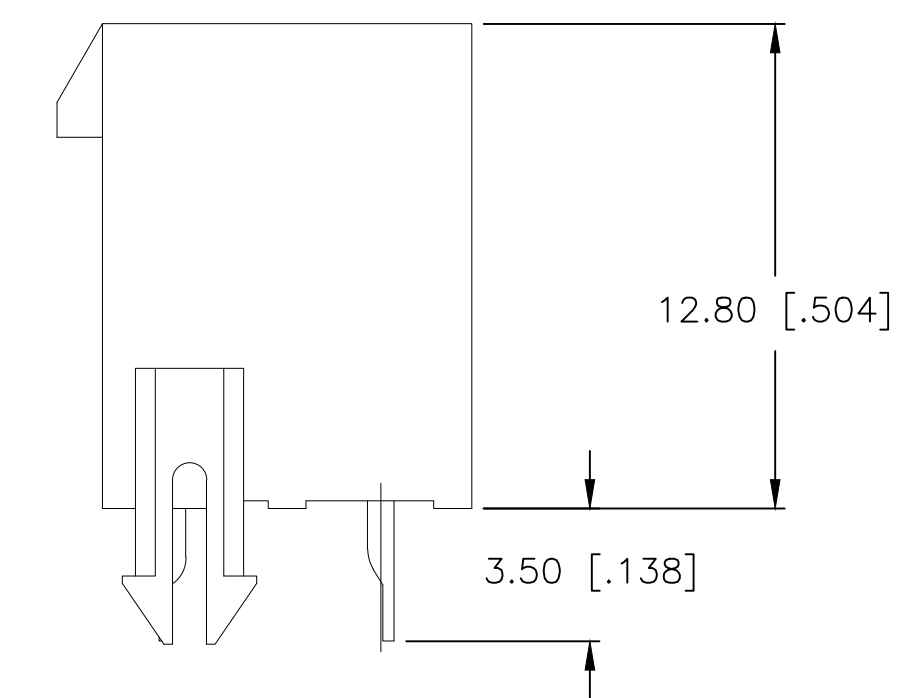
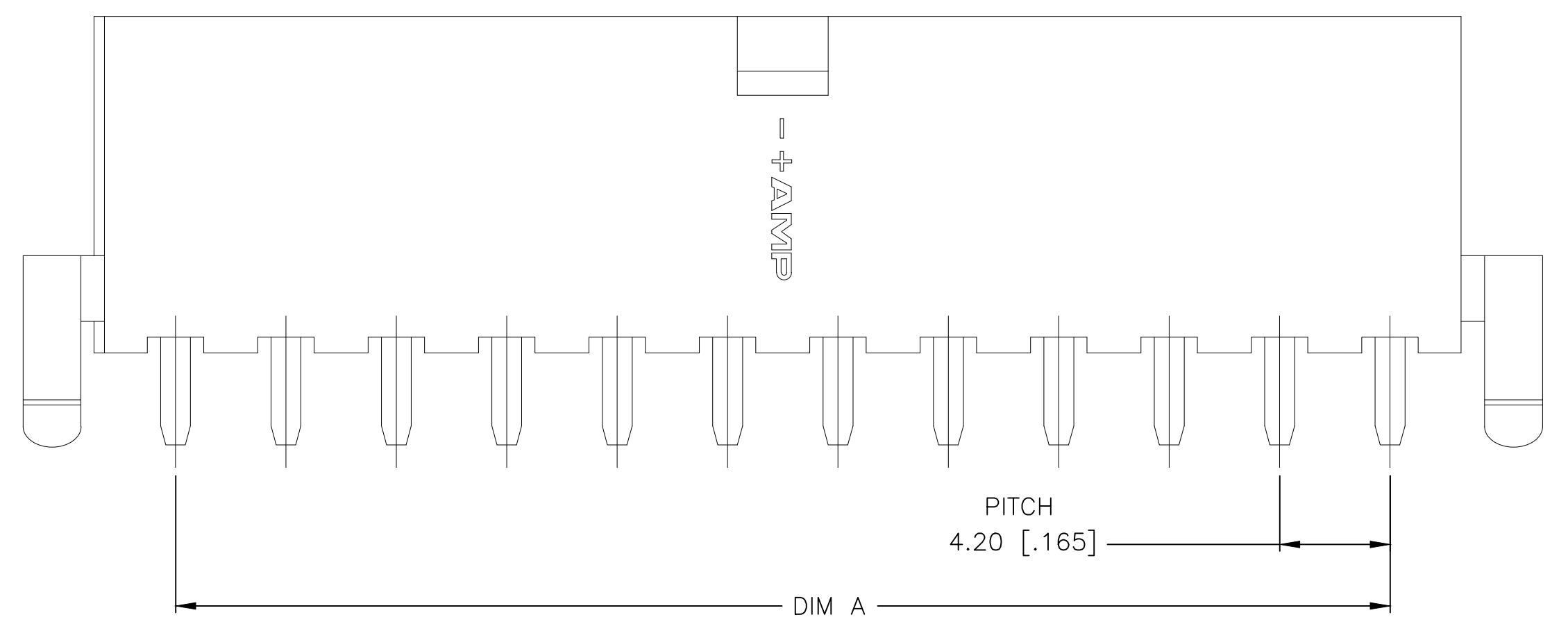
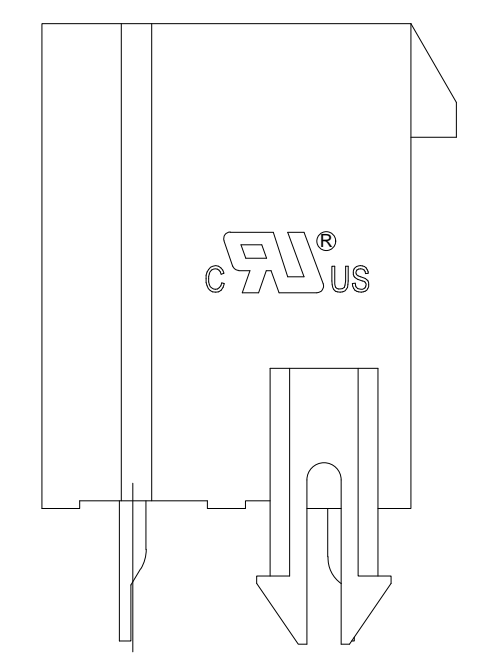


REVISIONS					
P	LTR	DESCRIPTION	DATE	DMN	APVD
A1		REVISED PER ECO-17-018762	22DEC2017	J.Z	D.Z



- 1 MATERIAL:  
HOUSING: POLYAMIDE, UL94V-0, NATURAL  
CONTACTS: HIGH PERFORMANCE COPPER ALLOY, TIN PLATED
- 2 GLOW WIRE APPROVED, CONTACT TE ENGINEERING FOR SPECIFICATION.
- 3 MATES WITH VAL-U-LOK(TM) RECEPTACLE HOUSINGS:  
X-1586019-X(UL94-V0)  
X-1586765-X(UL94-V2,GLOW WIRE)



PCB LAYOUT: COMPONENT SIDE  
RECOMMENDED BOARD THICKNESS 1.78 [.070]

POS	DIM A	DIM B	DIM C	PART NUMBER
24	46.2±0.2 [1.819±.008]	51.6 <sup>+0.5</sup> <sub>0</sub> [2.031 <sup>+0.02</sup> <sub>0</sub> ]	55.6 [2.189]	2-2825274-4
22	42.0±0.2 [1.654±.008]	47.4 <sup>+0.5</sup> <sub>0</sub> [1.866 <sup>+0.02</sup> <sub>0</sub> ]	51.4 [2.024]	2-2825274-2
20	37.8±0.2 [1.488±.008]	43.2 <sup>+0.5</sup> <sub>0</sub> [1.701 <sup>+0.02</sup> <sub>0</sub> ]	47.2 [1.858]	2-2825274-0
18	33.6±0.2 [1.323±.008]	39.0 <sup>+0.5</sup> <sub>0</sub> [1.536 <sup>+0.02</sup> <sub>0</sub> ]	43.0 [1.693]	1-2825274-8
16	29.4±0.2 [1.157±.008]	34.8 <sup>+0.5</sup> <sub>0</sub> [1.370 <sup>+0.02</sup> <sub>0</sub> ]	38.8 [1.528]	1-2825274-6
14	25.2±0.2 [.992±.008]	30.6 <sup>+0.5</sup> <sub>0</sub> [1.205 <sup>+0.02</sup> <sub>0</sub> ]	34.6 [1.362]	1-2825274-4
12	21.0±0.2 [.827±.008]	26.4±0.2 [1.039±.008]	30.4 [1.197]	1-2825274-2
10	16.8±0.1 [.661±.004]	22.2±0.2 [.874±.008]	26.2 [1.031]	1-2825274-0
8	12.6±0.1 [.496±.004]	18.0±0.2 [.709±.008]	22.0 [.866]	2825274-8
6	8.4±0.1 [.331±.004]	13.8±0.2 [.543±.008]	17.8 [.701]	2825274-6
4	4.2±0.1 [.165±.004]	9.6±0.2 [.378±.008]	13.6 [.535]	2825274-4
2		5.4±0.2 [.213±.008]	9.4 [.370]	2825274-2

THIS DRAWING IS A CONTROLLED DOCUMENT.

DIMENSIONS: mm [INCHES]

TOLERANCES UNLESS OTHERWISE SPECIFIED:

0 PL	±
1 PL	± 0.5 [0.2]
2 PL	± 0.25 [.010]
3 PL	±
4 PL	±
ANGLES	±

MATERIAL: 1

FINISH:

THIS DRAWING IS A CONTROLLED DOCUMENT.

DIN WARREN HUO 15AUG2017

CHK DANIEL ZHANG 15AUG2017

APVD DANIEL ZHANG 15AUG2017

NAME: 108-150000

PRODUCT SPEC: 108-150000

APPLICATION SPEC: 114-13172

WEIGHT: 114-13172

SIZE: A1

CAGE CODE: 00779

DRAWING NO: 2825274

RESTRICTED TO: -

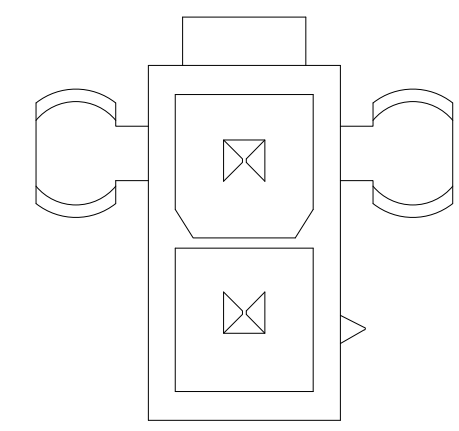
CUSTOMER DRAWING

SCALE: N/A

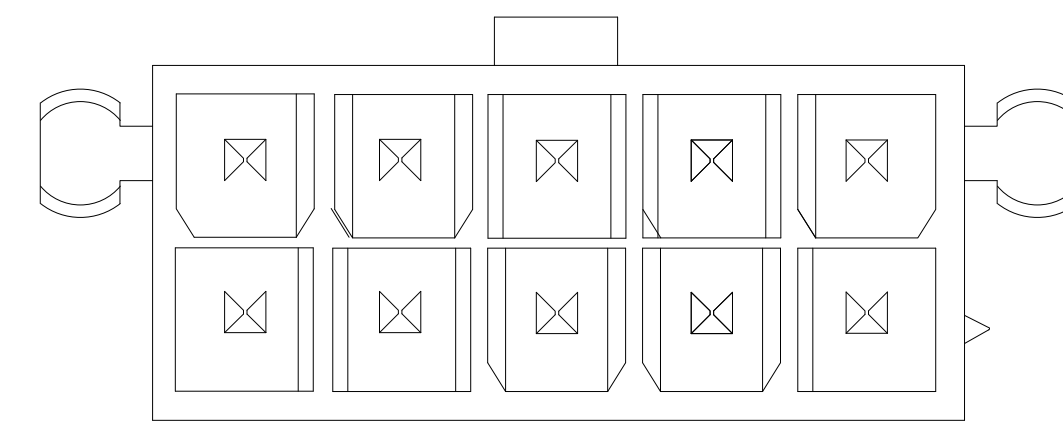
SHEET: 1 OF 2

REV: A1

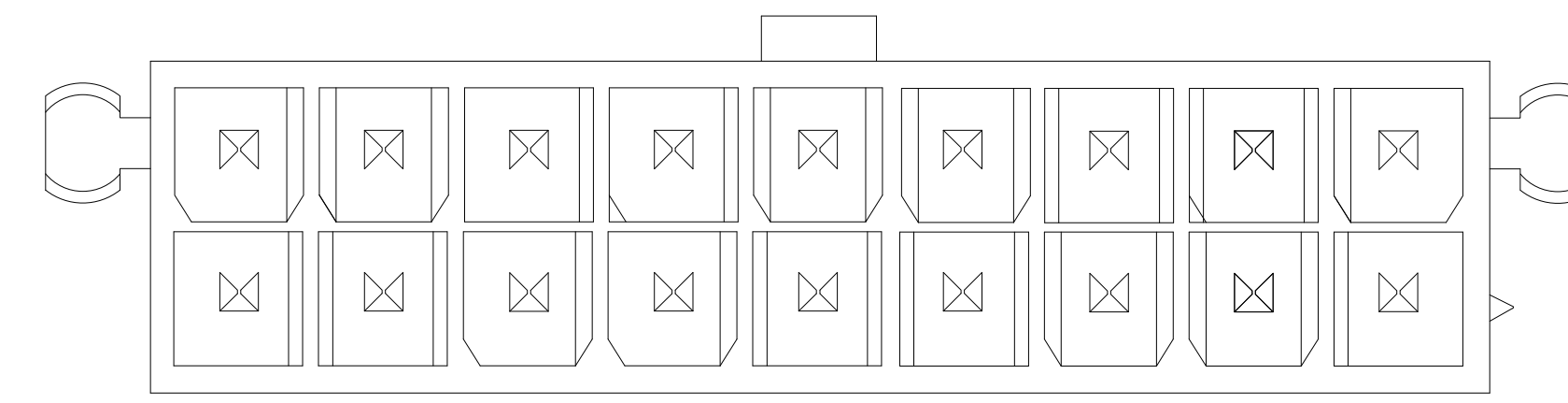
REVISIONS				
#	LR	DESCRIPTION	DATE	OWN
-	-	SEE SHEET 1	-	-



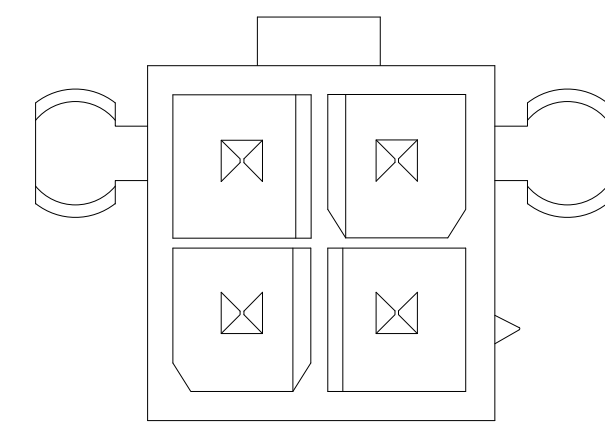
2825274-2



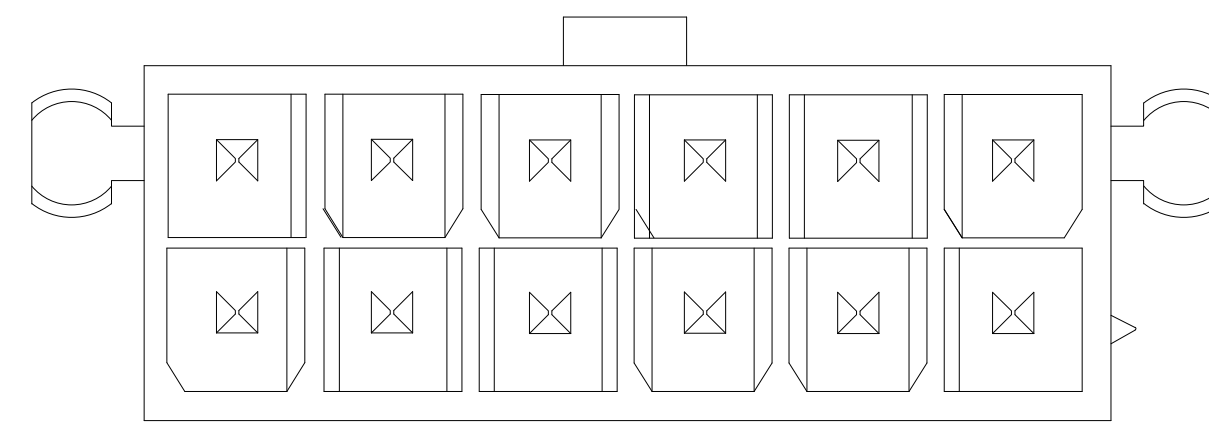
1-2825274-0



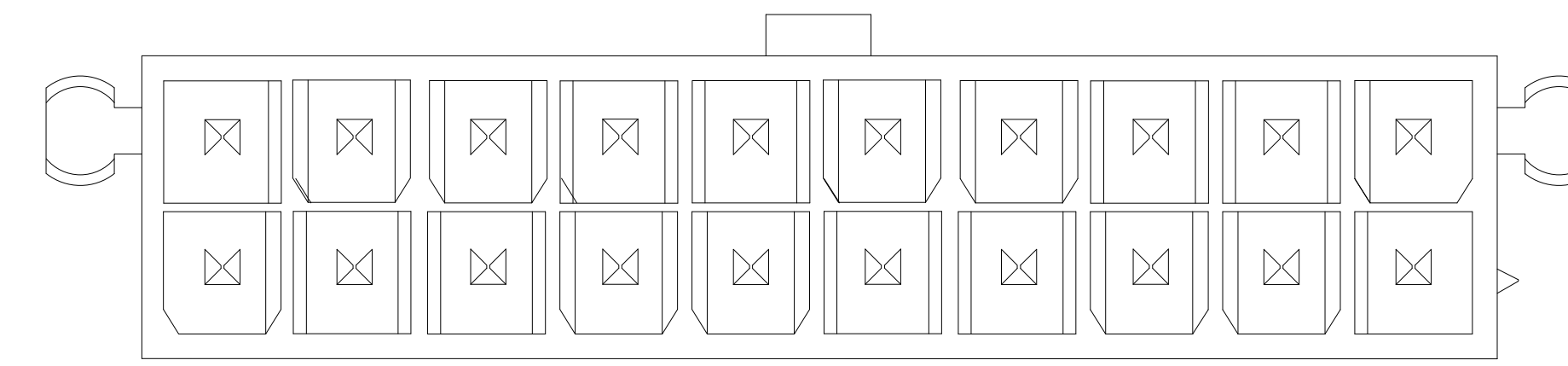
1-2825274-8



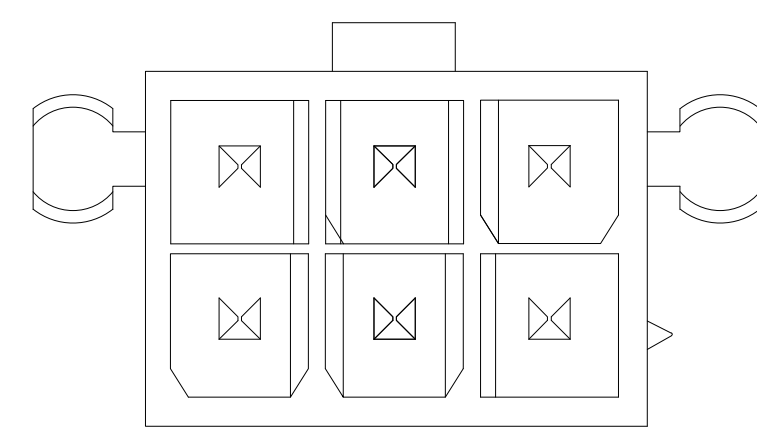
2825274-4



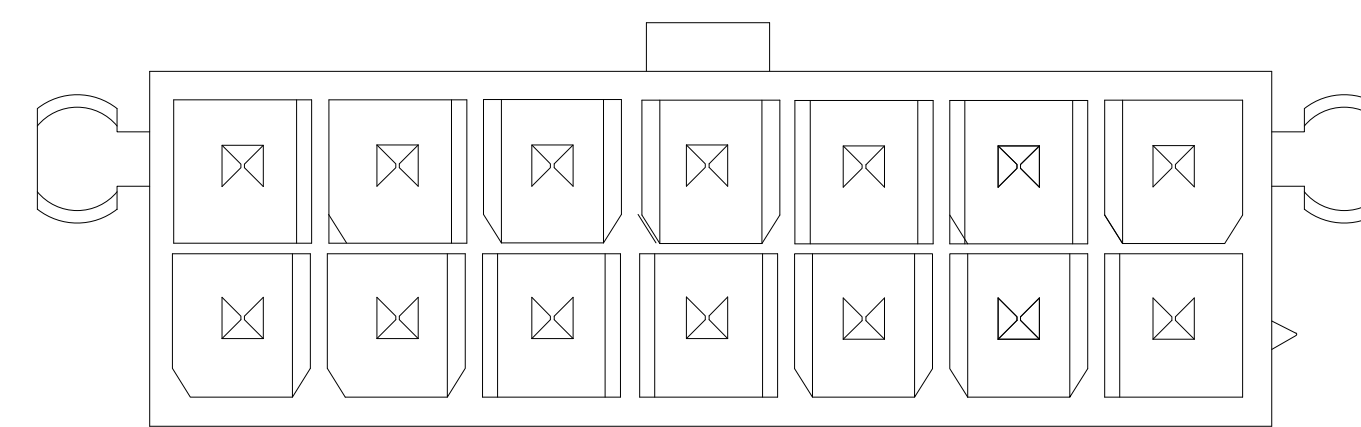
1-2825274-2



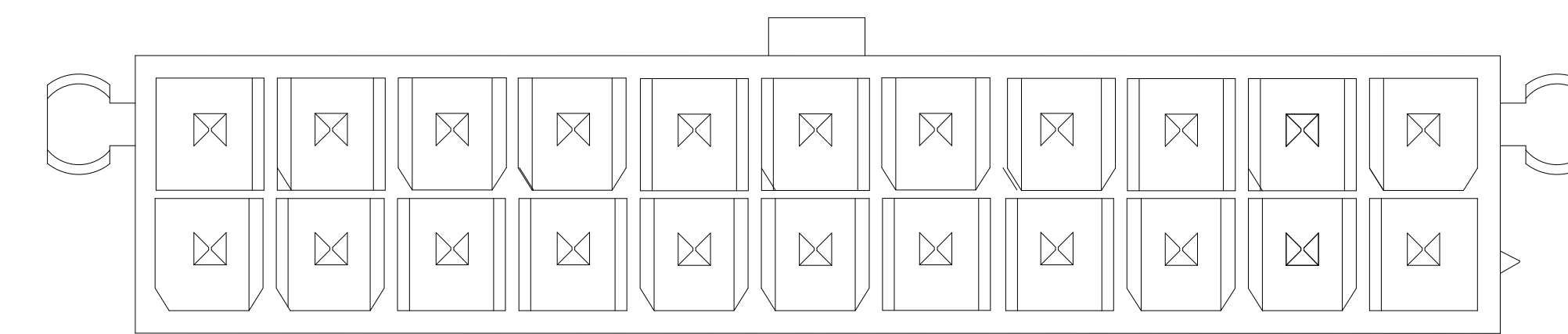
2-2825274-0



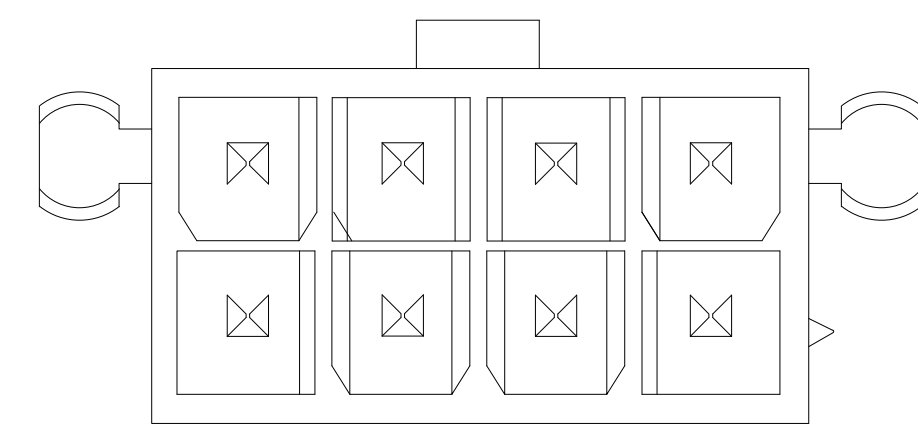
2825274-6



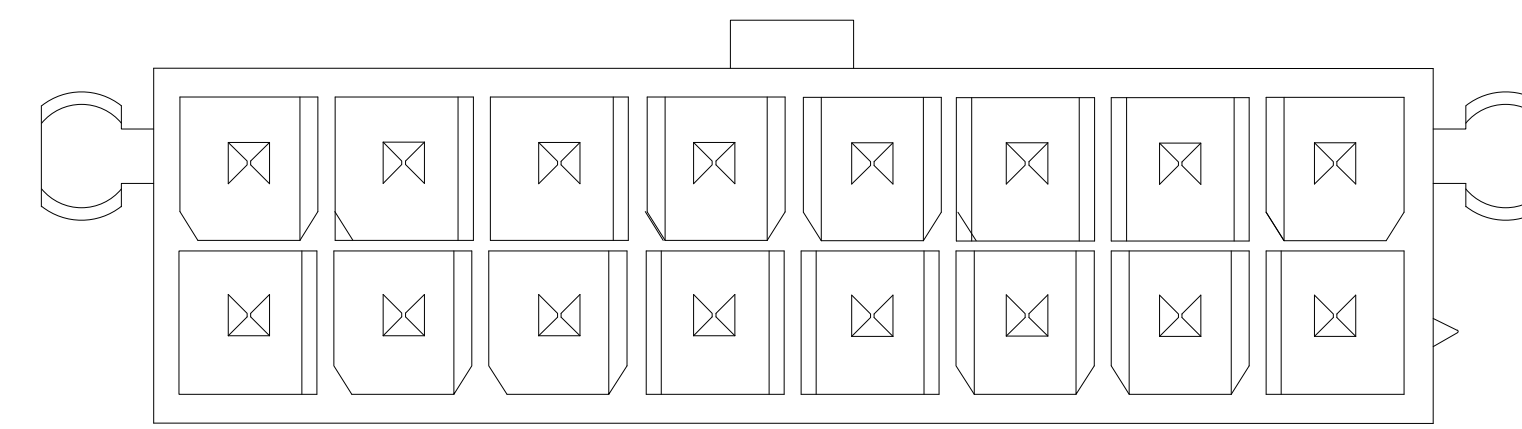
1-2825274-4



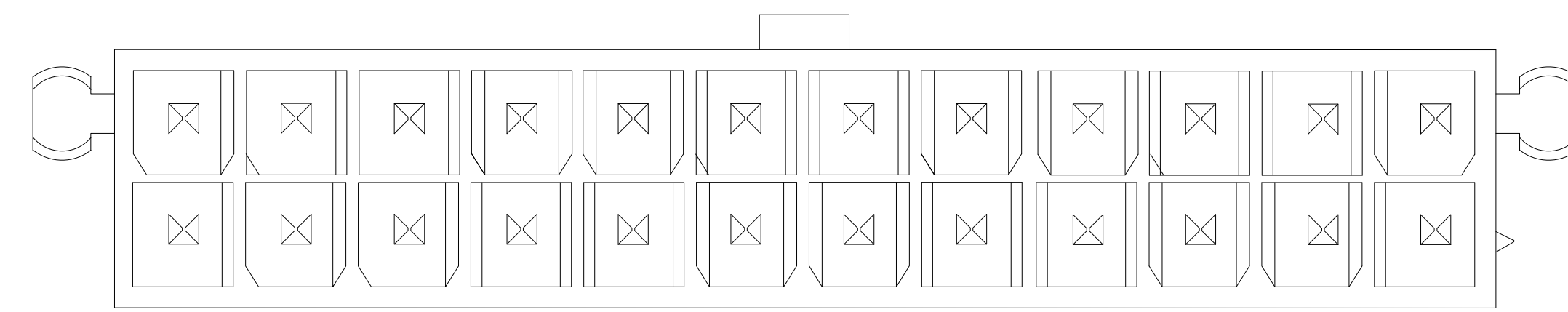
2-2825274-2



2825274-8



1-2825274-6



2-2825274-4

THIS DRAWING IS A CONTROLLED DOCUMENT.		DWN WARREN HUO 15AUG2017	TE Connectivity	
DIMENSIONS: mm [INCHES]		CHK DANIEL ZHANG 15AUG2017	NAME	
TOLERANCES UNLESS OTHERWISE SPECIFIED:		APRO DANIEL ZHANG 15AUG2017	PRODUCT SPEC	
0 PLC ±		PRODUCT SPEC	108-150000	
1 PLC ± 0.5 [02]		APPLICATION SPEC	114-13172	
2 PLC ± 0.25 [010]		WEIGHT	A1 00779 ©=2825274	
3 PLC ±		CUSTOMER DRAWING	SCALE N/A SHEET 2 OF 2 REV A1	
4 PLC ±				
ANGLES ±				
FINISH				