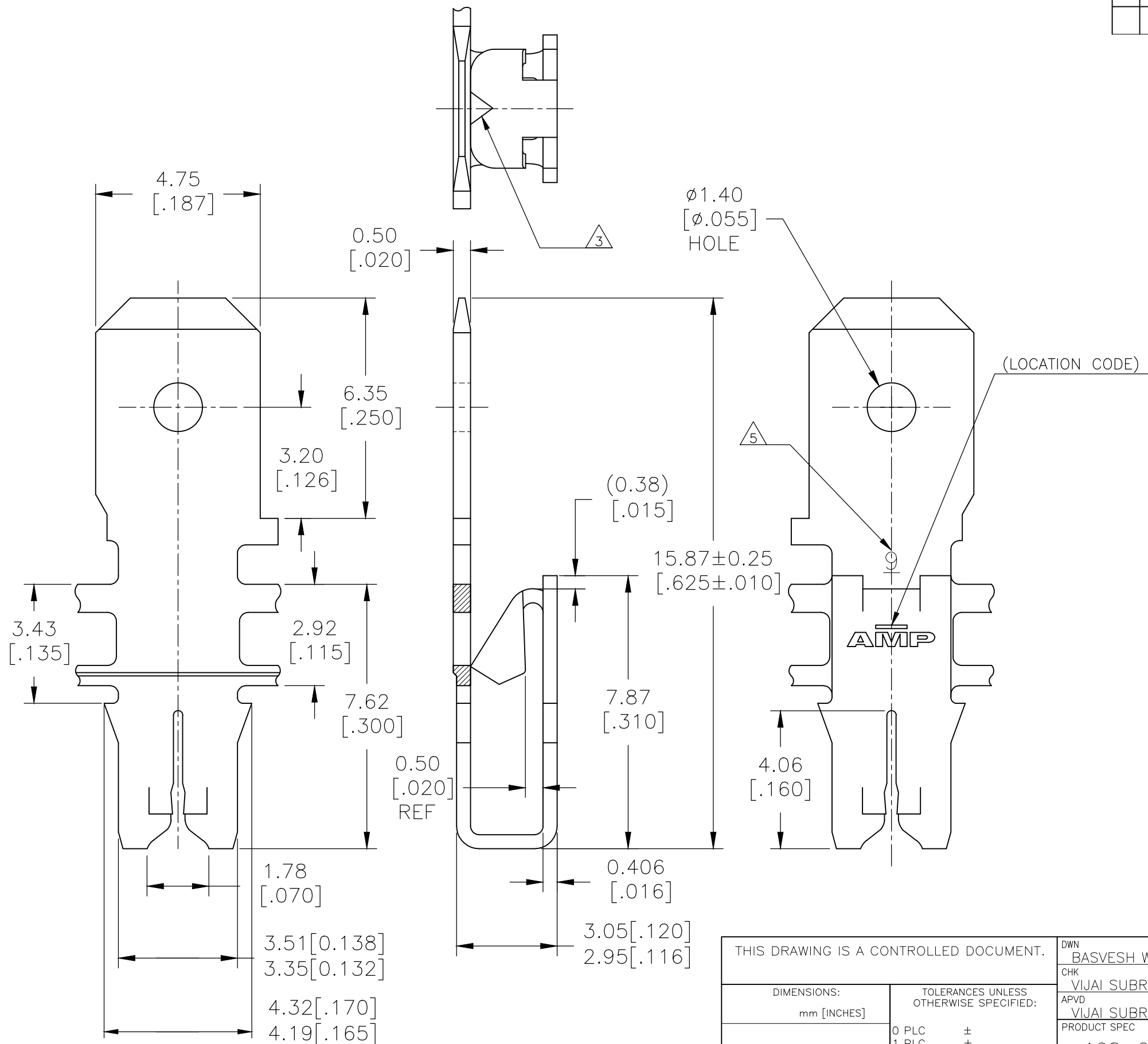


THIS DRAWING IS UNPUBLISHED. RELEASED FOR PUBLICATION - F .
 © COPYRIGHT - TE CONNECTIVITY ALL RIGHTS RESERVED.

P	LTR	DESCRIPTION	DATE	DWN	APVD
	A1	WIRE RANGE IS UPDATED	26OCT2018	SV	PKS



- 1 CONTINUOUS STRIP ON REELS WITH TERMINALS LOCATED ON 5.59±0.08 CENTERS.
- 2 SLOT ACCEPTS A SINGLE OR DOUBLE WIRE ONLY
COPPER WIRE RANGE 0.36-0.51mm [#27-#24] AWG
ALUMINUM WIRE RANGE 0.45-0.51mm [#25-#24] AWG
- 3 POKE-IN ACCEPTS A 0.5~0.8mm² (#20~#18)AWG SOLID OR FUSED STRANDED LEAD WIRE. BUT POKE-IN TAB IS NOT APPLICABLE.
- 4 AFTER INSERTION INTO PLASTIC HOLDER TAB PORTION MUST BE BENT OVER 45° TO 90° OR POTTED-IN TO PREVENT PULL-OUT WHEN MATING RECEPTACLE IS DISCONNECTED.
- 5 IDENTIFICATION NUMBER 9 FOR MAGNET WIRE SLOT SIZE.
- 6 APPLICABLE RECEPTACLE CONT: 187 SERIES POSITIVE LOCK EX, 187 SERIES FASTON.
*WHEN RECEPTACLE MATE WITH 187 TAB, MUST ATTEND NO DAMAGE TO MAG-MATE TERMINAL.
- 7 EITHER PART WILL ACCEPT THE POKE IN MATING OR 187 RECEPTACLE MATING.

POKE-IN TAB NOT APPLICABLE	TIN PLATED	2825382-1
MATING TO POKE IN	FINISH	PART NUMBER

THIS DRAWING IS A CONTROLLED DOCUMENT.

DIMENSIONS:	TOLERANCES UNLESS OTHERWISE SPECIFIED:
mm [INCHES]	
0 PLC	±
1 PLC	± -
2 PLC	± 0.20[.008]
3 PLC	±
4 PLC	±
ANGLES	±
FINISH	SEE TABLE

MATERIAL	BRASS
----------	-------

DWN	14NOV2016	BASVESH WARAD
CHK	14NOV2016	VIJAI SUBRAMANIAN
APVD	14NOV2016	VIJAI SUBRAMANIAN
PRODUCT SPEC	108-2012	
APPLICATION SPEC	114-2046	
WEIGHT	0.00	

STE TE Connectivity			
TAB, POKE-IN / .187 COMBINATION, 300 SERIES MAG-MATE			
SIZE	CAGE CODE	DRAWING NO	RESTRICTED TO
A3	00779	C-2825382	-
CUSTOMER DRAWING		SCALE	SHEET
		8:1	1 OF 1
		REV	A1

187 SERIES POSITIVE LOCK EX	STRAIGHT TYPE	173722-1
		173723-1
		173724-X
		173725-X
	FLAG TYPE	175019-1