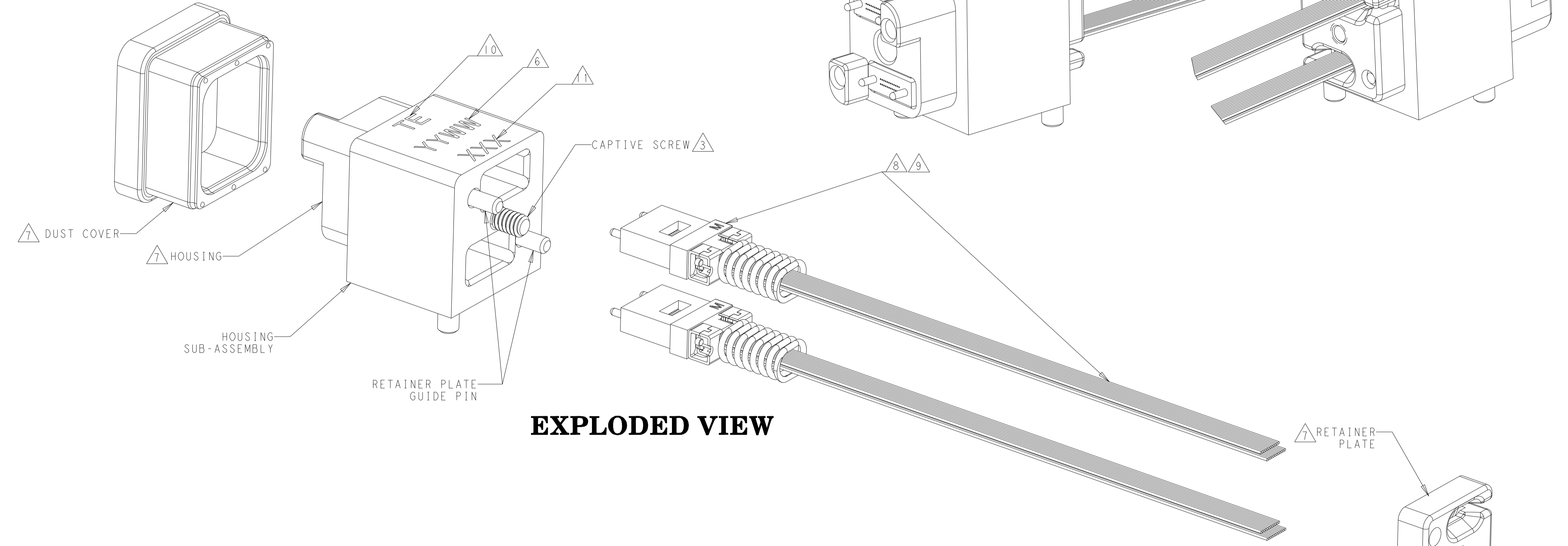
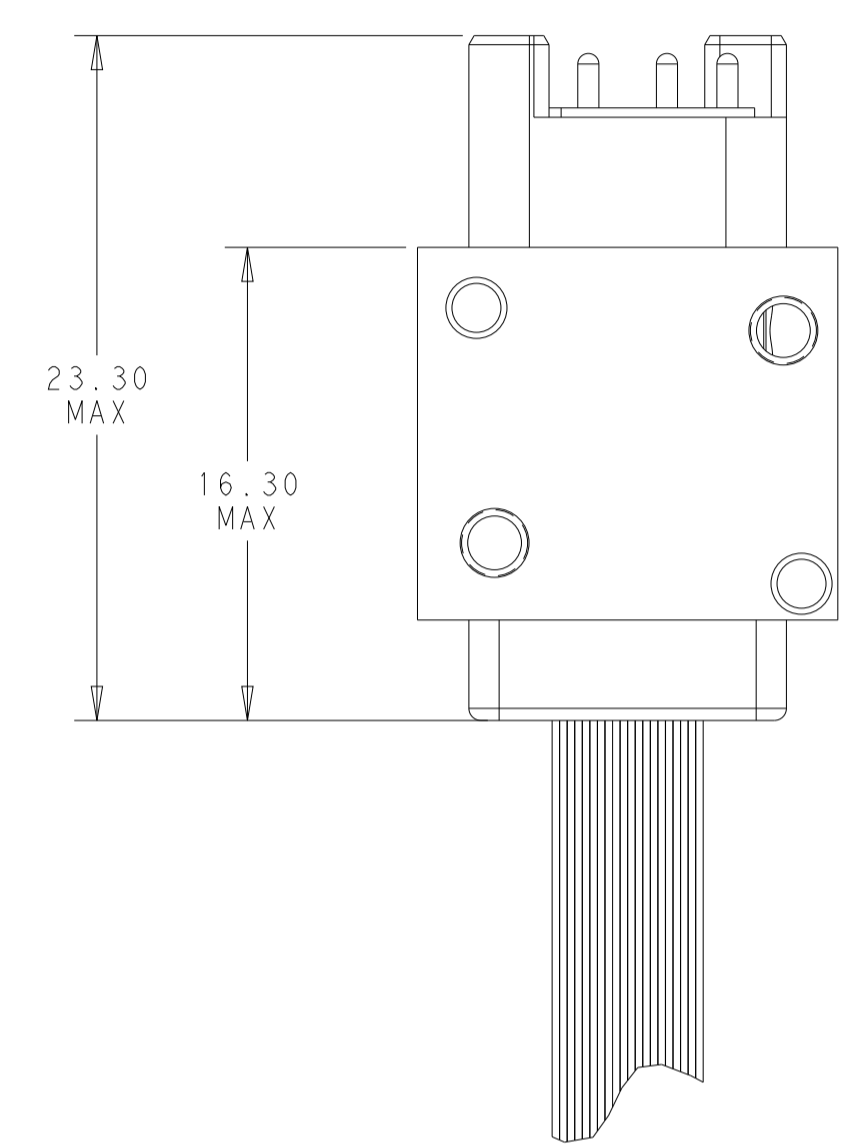
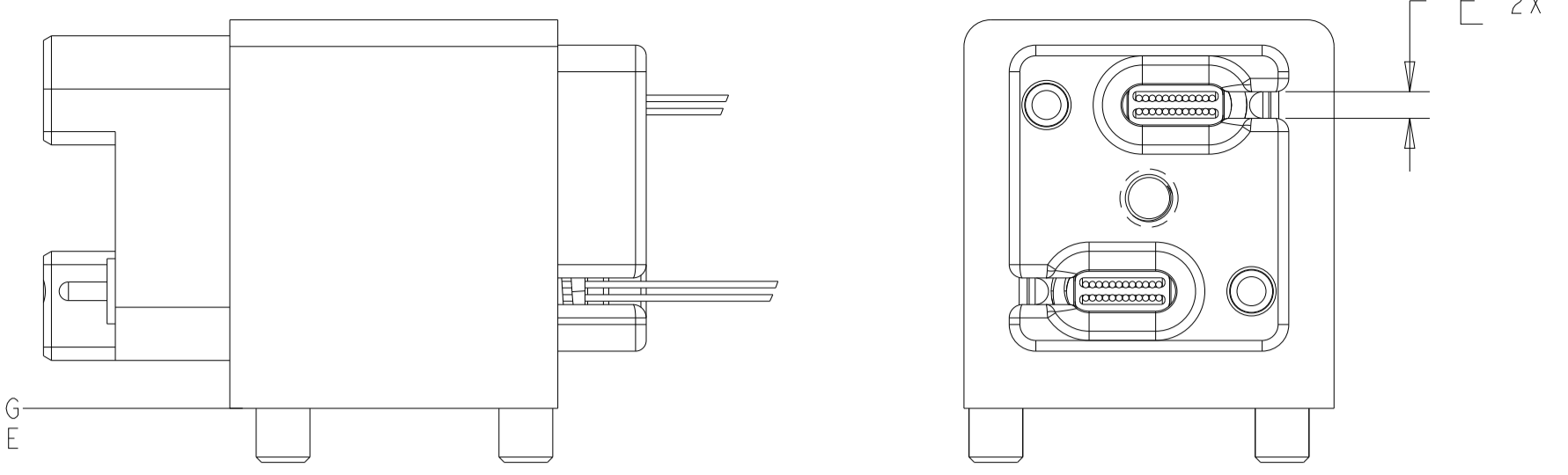
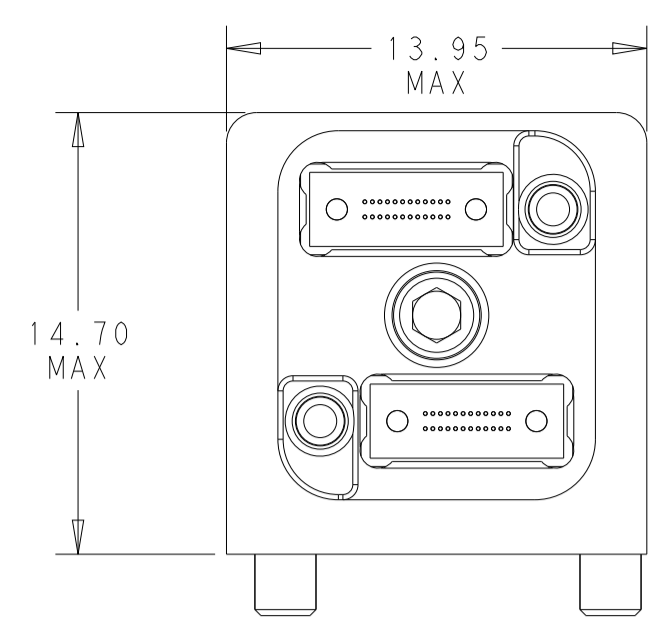
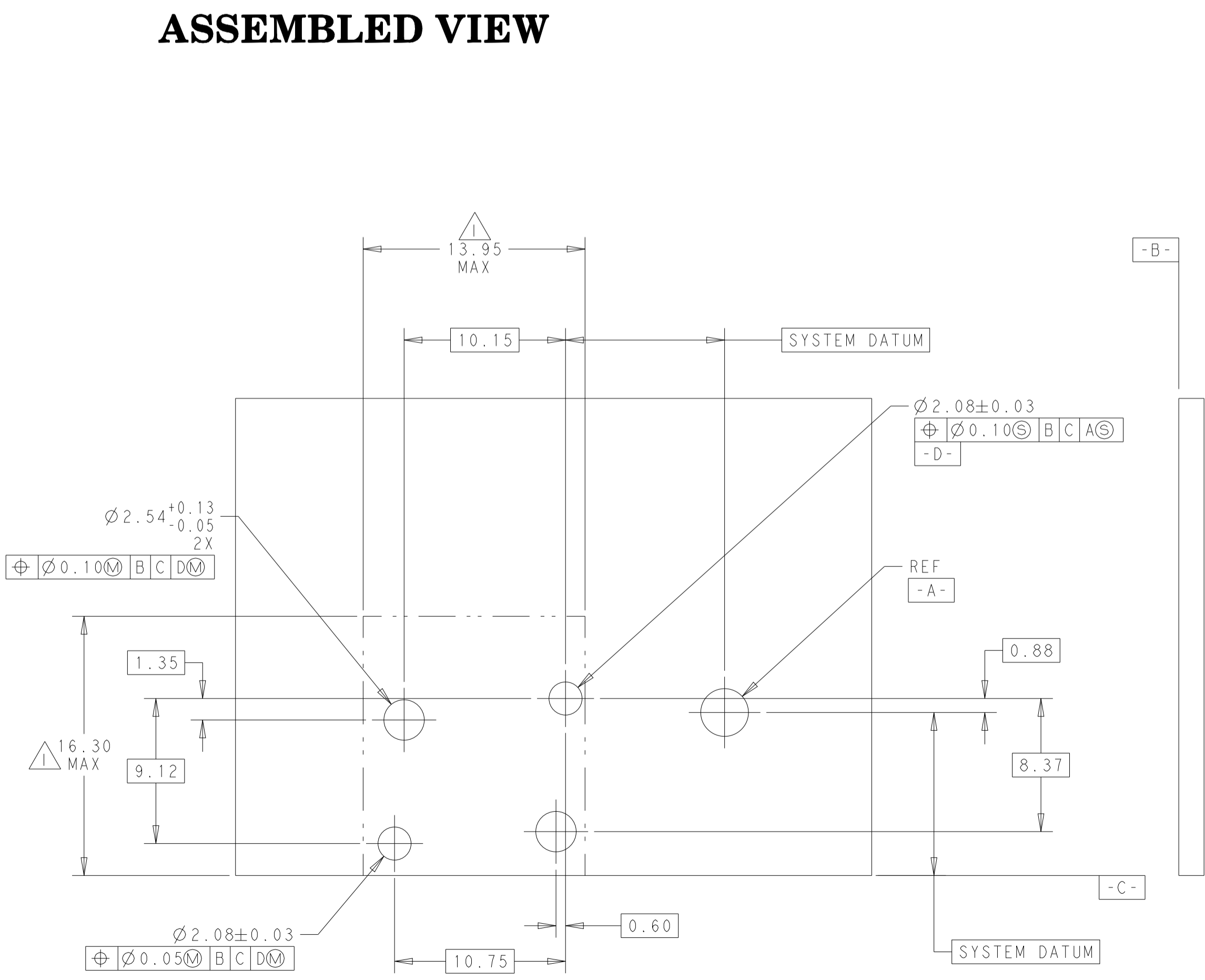


REVISIONS				
P	LTN	DESCRIPTION	DATE	APPV
A		RELEASED PER ECO-17-014355	01NOV2017	DF JM
A1		REVISED PER ECO-18-006586	01MAY2018	DF JM
A2		REVISED PER ECO-18-016579	22OCT2018	DF JM
B		ECN-22-177655	17OCT2022	CG JM

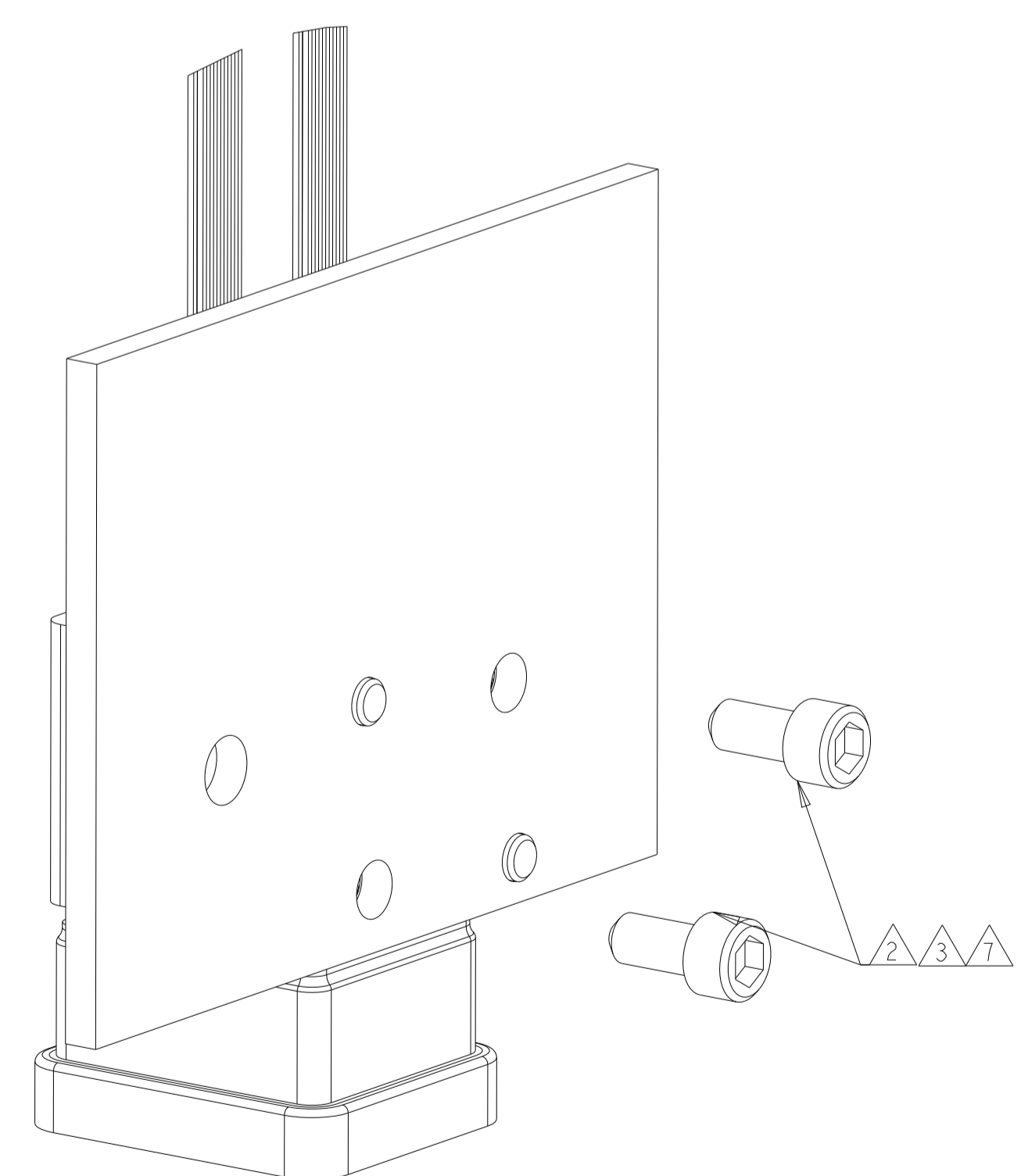


EXPLODED VIEW

ASSEMBLED VIEW



RECOMMENDED PLUG-IN MODULE FOOTPRINT



MODULE MOUNTING DETAIL

- 1 AREA REQUIRED FOR CONNECTOR PLACEMENT.
- 2 2 PAIRS OF SCREWS WITH A PRE-APPLIED NYLOK PATCH ARE INCLUDED FOR PC-BOARD MOUNTING
 -IF THE PC-BOARD THICKNESS RANGE IS 1.50mm[.060in]-2.50mm[.098in] USE #2-56x5/32in LONG SCREWS
 -IF THE PC-BOARD THICKNESS RANGE IS 2.50mm[.098in]-3.50mm[.138in] USE #2-56x3/16in LONG SCREWS
 -IF THE PC-BOARD IS THICKER THAN 3.50mm[.138in] LONGER SCREWS ARE REQUIRED
- 3 RECOMMENDED TORQUE: 0.23-0.34 N-m [2-3 in-lb].
- 4 MATERIAL: HOUSING AND RETAINER PLATE: ALUMINUM ALLOY
 GUIDE PIN, CAPTIVE SCREW AND SHC SCREW: STAINLESS STEEL
 DUST COVER: THERMOPLASTIC ELASTOMER
- 5 FINISH: HOUSING AND RETAINER PLATE:
 CLEAR CHROMATE CONVERSION COATING.
 GUIDE PIN, CAPTIVE SCREW AND SHC SCREW: PASSIVATED.
- 6 DATE CODE: YEAR AND WEEK (YYWW).
- 7 PLUG (MODULE) CONNECTOR KIT, (UNASSEMBLED) CONSISTS OF THE FOLLOWING ITEMS:
 HOUSING SUB-ASSEMBLY (QTY 1)
 RETAINER PLATE (QTY 1)
 #2-56 X 3/16 IN. SCREWS (QTY 2)
 #2-56 X 5/32 IN. SCREWS (QTY 2)
 DUST COVER (QTY 1)
- 8 CUSTOM FIBER-OPTIC CABLE ASSEMBLIES,
 (CAN BE ORDERED SEPARATELY)
- 9 MT FERRULE KIT, (UNASSEMBLED) CONTAINS: MT FERRULE, MINI-BOOT,
 FERRULE COVER, PIN HOLDER AND SPRING
 (CAN BE ORDERED SEPARATELY, 2828412-1:12FIBER, 2828412-2: 24 FIBER)
- 10 TE CONNECTIVITY PRODUCT IDENTIFIER.
- 11 TE MANUFACTURING LOCATION CODE (XXX)
- 12 WEIGHT CALCULATION FOR REFERENCE ONLY: 7.2 GRAMS
 (EXCLUDING DUST COVER)

1.5	2828384-2
1.0	2828384-1
RETAINER PLATE SLOT WIDTH E	ASSEMBLY PART NUMBER

THIS DRAWING IS A CONTROLLED DOCUMENT.		OWN: D. FABIAN 24MAR2015	TE Connectivity	
DIMENSIONS:		CHK: J. MOSIER 14NOV2017	NAME: CONNECTOR KIT, (VITA 66.4 DERIVATIVE)	
TOLERANCES UNLESS OTHERWISE SPECIFIED:		APPV: J. MOSIER 14NOV2017	PRODUCT SPEC: 108-163007	
mm		APPLICATION SPEC: 114-163005	FIBER OPTIC, MT, DUAL-CAVITY	
0 PLC	±	WEIGHT: 7.2	SIZE: A1	RESTRICTED TO: -
1 PLC	±0.13	CUSTOMER DRAWING	SCALE: 4:1	SHEET 1 OF 1
2 PLC	±			REV B
3 PLC	±			
4 PLC	±			
ANGLES	±1			
FINISH	±			