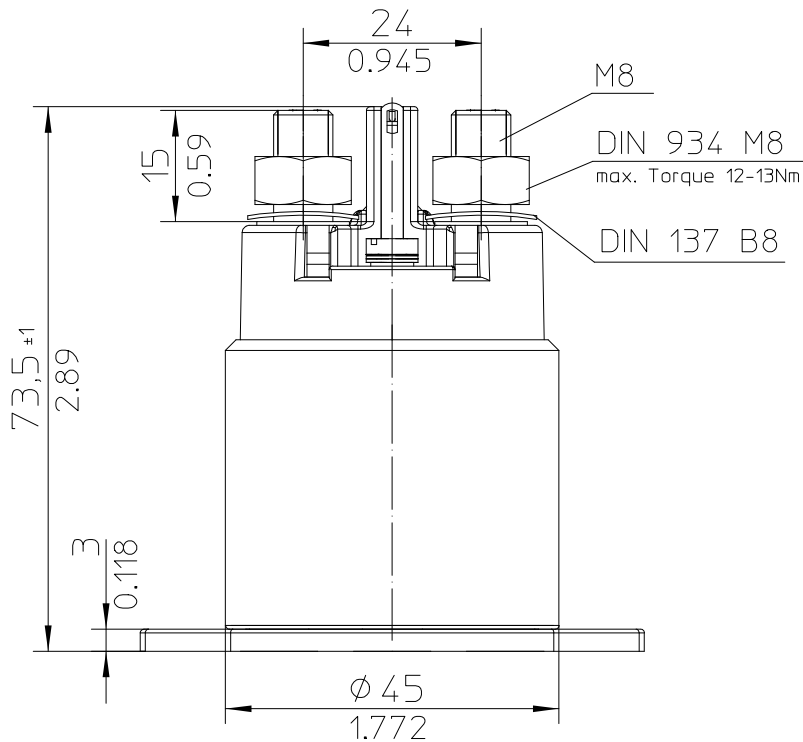
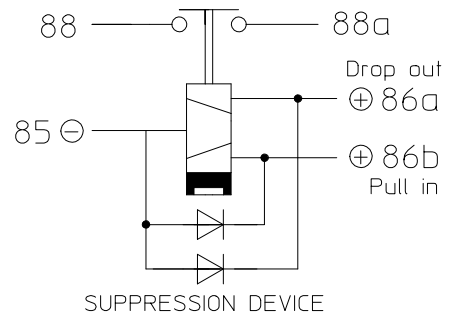
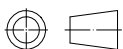


CIRCUIT



Third Angle Projection



DIMENSIONAL TOLERANCES
 3 PLACE DECIMAL ±0.010
 2 PLACE DECIMAL ±0.03
 ANGULAR ±0°30'

For this drawing we reserve the copyright in accordance with DIN ISO 16016

	Date	Name
Create	03.06.2013	Seege
Edited	25.10.2019	Mielk
Check	25.10.2019	Kaise

mm inch	Scale 1:1
General Tolerances DIN ISO 2768 cL	



Drawing No:

30-113-12

NSN:

Technical Data

Bi-stable relays of the series 30 are equipped with 2 coils and magnetical latching. The relay will pick up (make) by an impulse to the pull-in coil. Without current the make position will be held by a permanent magnet. The relay will open (break) through an impulse to the drop-out coil. Break position is also supported by the permanent magnet.

ENVIRONMENTAL CHARACTERISTICS

TEMPERATURE RANGE -40°C TO +85°C (-40°F TO +185°F)
 MAX. ALTITUDE RATING 50 000 FT
 SEAL IEC 529, 2. EDITION 1989-IP67 (6 FT/ 1 MIN.) AND IP6K9K
 SHOCK G-LEVEL 6G/ 11 MSEC
 VIBRATION 4G/ 50-2000 Hz

ELECTRICAL CHARACTERISTICS

MIN. INSULATION RESISTANCE INITIAL 100 MEGOHMS
 AFTER LIVE OR ENVIRONMENTAL 50 MEGOHMS
 DIELECTRIC WITHSTANDING VOLTAGE 1 050 VAC/ 1 MIN
 MAX. CONTACT DROP, INITIAL 0,15 VDC
 AFTER LIFE TEST 0,175 VDC
 OVERLOAD 1000 AMP FOR 1 SEC., 250 AMP FOR 20 SEC.
 DUTY RATING 120 AMP CONTINUOUS

RATED CONTACT LOAD

MOTOR LOAD 50 000 CYCLES
 MECHANICAL LIFE 100 000 CYCLES

OPERATING CHARACTERISTICS

VOLTAGE RANGE 18-32 VDC
 NOMINAL VOLTAGE 24 VDC
 PICK UP VOLTAGE MIN 13 VDC
 DROP OUT VOLTAGE MIN 10 VDC
 RESISTANCE PULL IN COIL 9 OHM ±20%
 PULL IN CURRENT APPROX. 2,7 AMP
 RESISTANCE DROP OUT COIL 10 OHM ±20%
 DROP OUT CURRENT APPROX. 2,4 AMP APPROX
 PICK UP IMPULSE TIME 50 MSEC APPROX. (CONTINUOUS IMPULSE MAX. 1 MIN)
 DROP OUT IMPULSE TIME 50 MSEC APPROX. (CONTINUOUS IMPULSE MAX. 1 MIN)


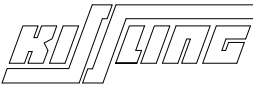
TIME-MILLISECONDS-MAX

PICK UP TIME MAX. 15
 BOUNCE MAX. 5
 DROP OUT MAX. 10

WEIGHT 0,32 KG = 0.706 POUND MAX.
WIRE SECTION (AT NOMINAL LOAD) MIN. 25mm²/ 0.039 sq. in./ AWG 3

SUBJECT TO CHANGE

For this drawing we reserve the copyright in accordance with DIN ISO 16016

	Date	Name		Scale 1:1		Drawing No:
Create	03.06.2013	Seege				General Tolerances DIN ISO 2768 cL
Edited	25.10.2019	Mielk	NSN:			
Check	25.10.2019	Kaise				