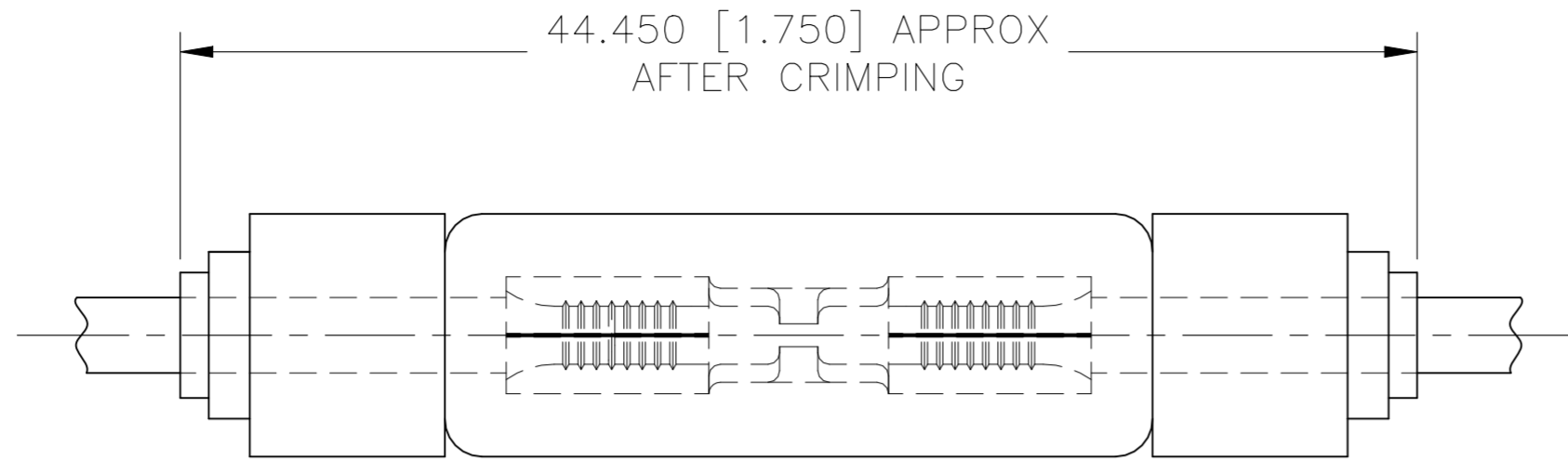
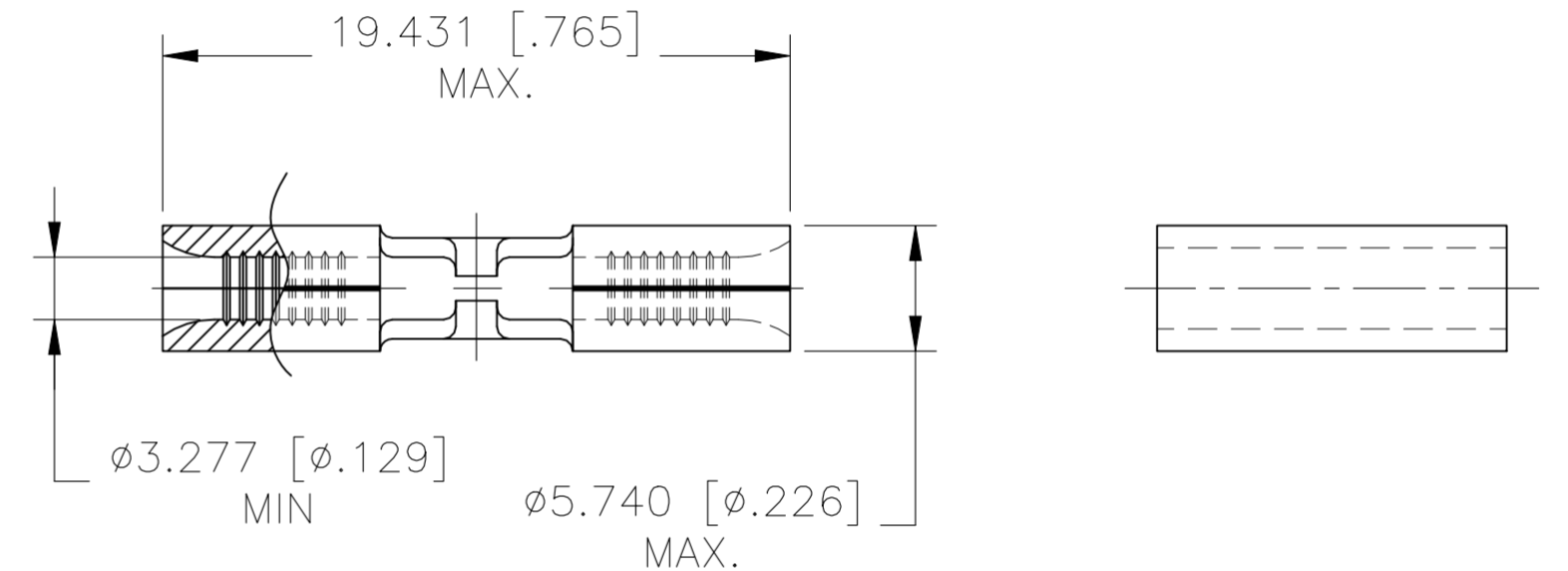
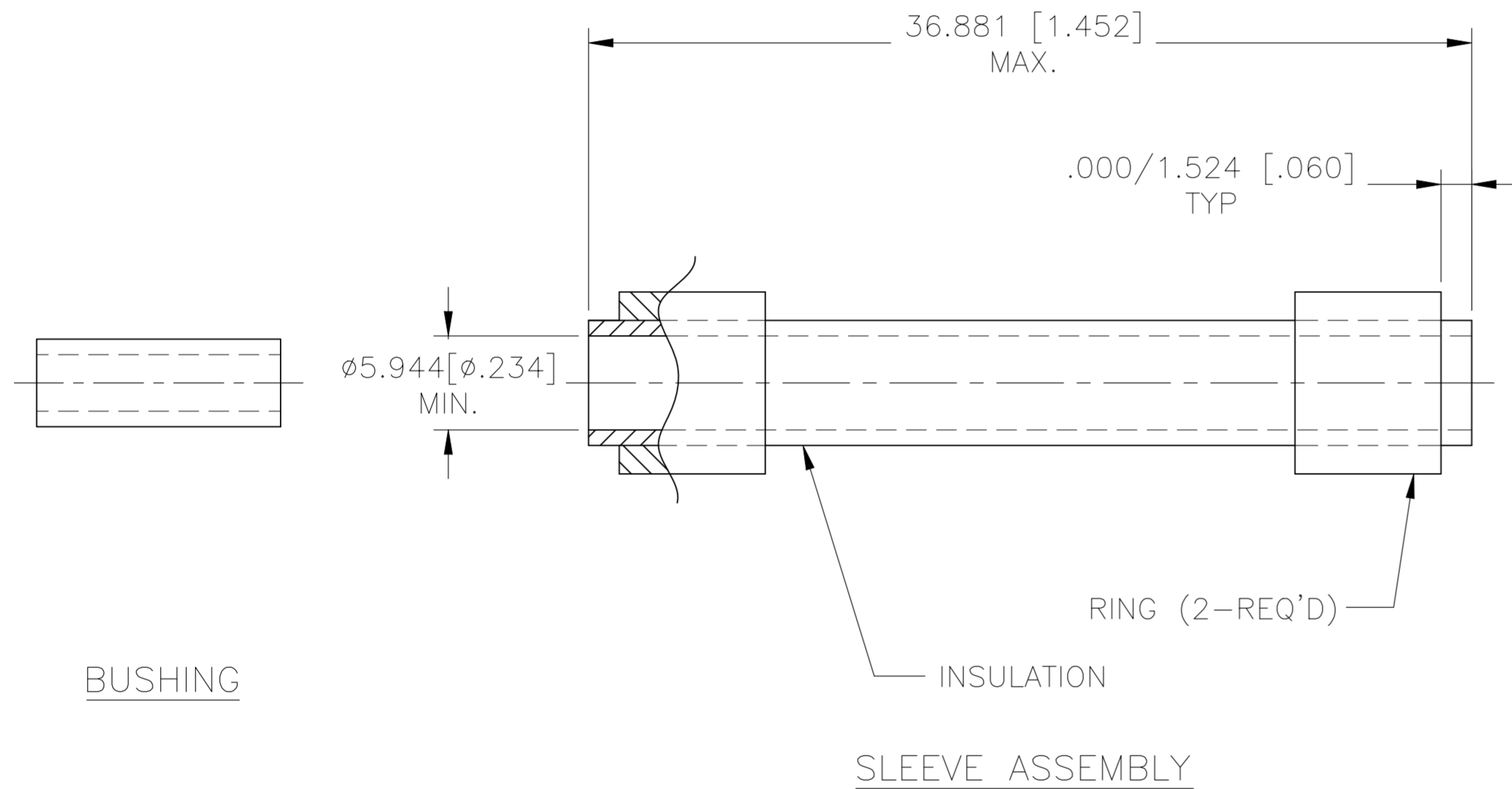


REVISIONS					
P	LTR	DESCRIPTION	DATE	DWN	APVD
C2		ECR-22-138429	20MAY2022	LP	DSC



1. FOR FOREGIN PRODUCTION ONLY



25	LOOSE PIECE	329651
QTY	PACKAGE TYPE	PART NUMBER

FOR 3.175[.125] TO 3.886[.153] WIRE INSULATION DIA.

QTY	DESCRIPTION	MATERIAL & FINISH
2	BUSHING	MATERIAL: PTFE PER ASTM D4895, FINISH COLOR: NATURAL
1	WIRE SPLICE 328600	MATERIAL: COPPER PER ASTM B152, ANNEALED FINISH: GOLD PLATE 0.00127[.00005] MIN EXT THK PER ASTM B488, TYPE 1 CODE C, OVER NICKEL PLATE 0.00127[.00005] MIN EXT THK PER SAE-AMS-QQ-N-290 OVER CU FLASH PER SAE AMS2418
1	SLEEVE ASS'Y	INSULATION: MATERIAL: PTFE PER ASTM D4895, FINISH COLOR: NATURAL RING: MATERIAL: ALUMINUM PER SAE-AMS-QQ-A-250/1, FINISH COLOR: YELLOW

THIS DRAWING IS A CONTROLLED DOCUMENT.		DWN LINGANATHAN P. 22APR2022	TE TE Connectivity	
DIMENSIONS: mm [INCHES]		CHK SUVARNA, CHETHAN D 22APR2022		
TOLERANCES UNLESS OTHERWISE SPECIFIED:		APVD SUVARNA, CHETHAN D 22APR2022	NAME WIRE SPLICE KIT, BUTT, POST INSULATED STRATO-THERM, WIRE SIZE: 12-10 AWG	
0 PLC ± - 1 PLC ± - 2 PLC ± - 3 PLC ± 0.127[.005] 4 PLC ± - ANGLES ± -		PRODUCT SPEC -	RESTRICTED TO -	
MATERIAL SEE TABLE		FINISH SEE TABLE	APPLICATION SPEC 114-2162	SIZE A2
		WEIGHT -	CAGE CODE 00779	DRAWING NO C-329651
CUSTOMER DRAWING			SCALE NTS	SHEET 1 OF 1
			REV C2	