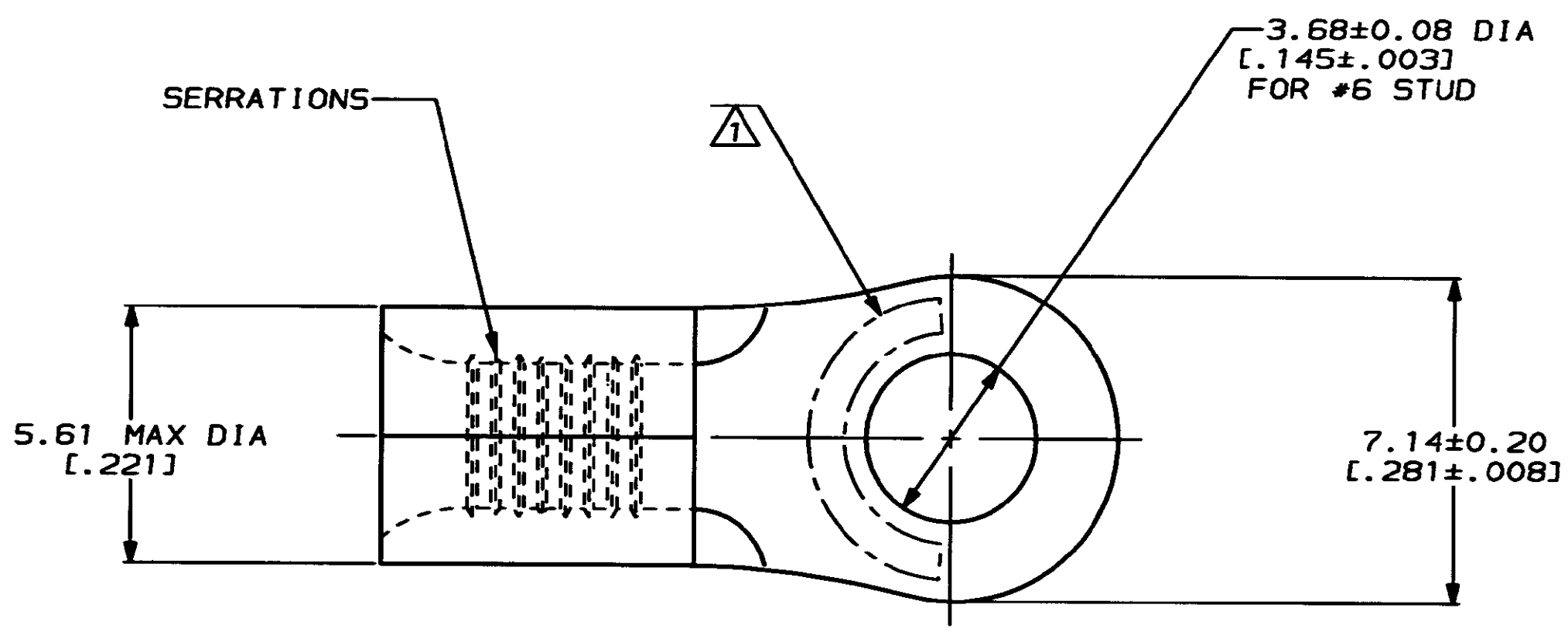


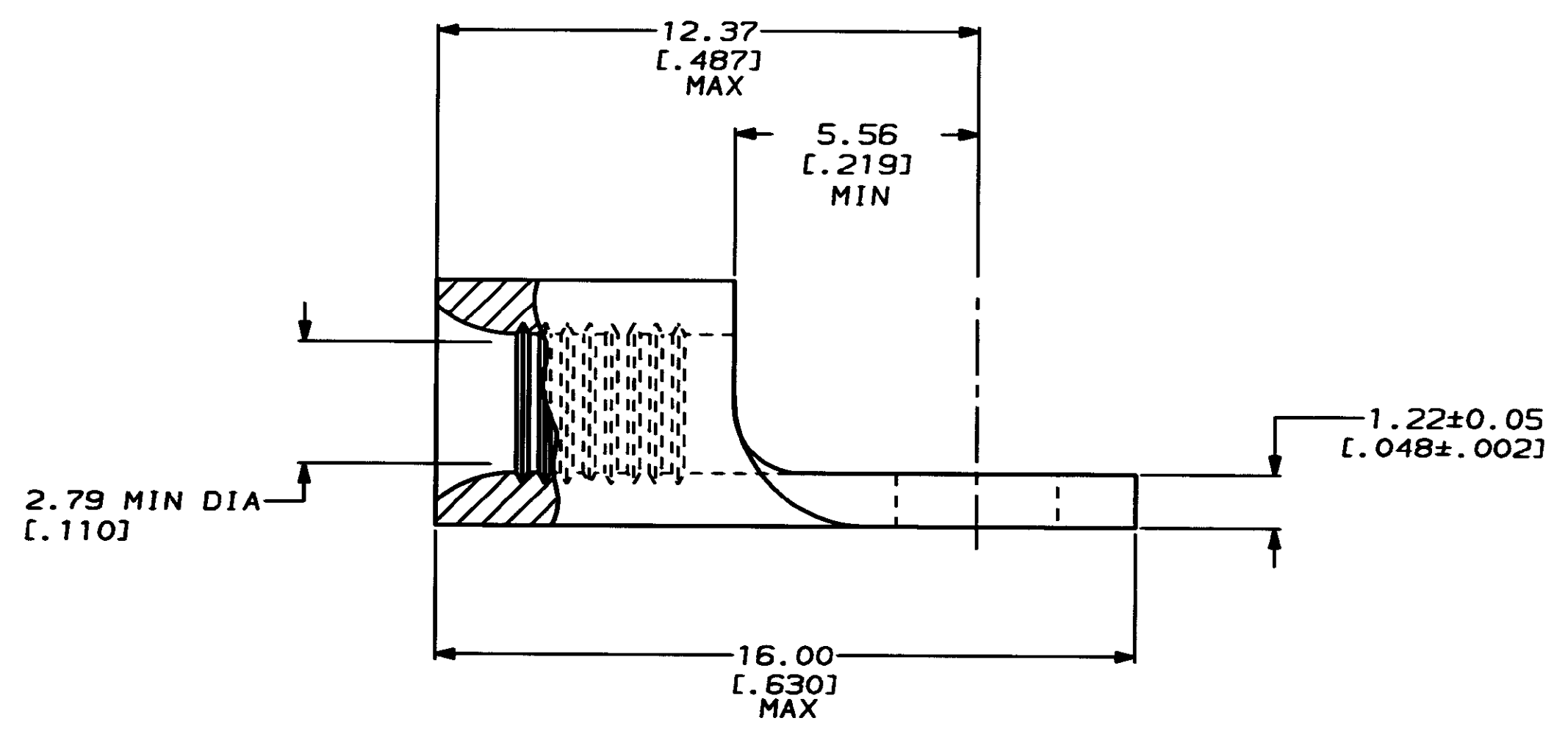
LOC		DIST		ZONE		LTR		REVISIONS		DATE	APPO
G	14	P	F					0	RELEASED PER 0720-0008-93	1-26-93	DAP

METRIC
 DIMENSIONS LISTED IN mm [INCHES]



AMP WIRE RANGE	UL E13288 Listed
16-14HD AWG STRANDED	16-14HD AWG STRANDED
LR7189 Certified	MILITARY P/N AND CLASS
NOT CERTIFIED	NOT APPLICABLE

△ STAMP AMP 16-14HD* APPROX AS SHOWN



AMP INCORPORATED CUSTOMER SERVICE SYSTEMS		MAX RECOMMENDED OPERATING TEMPERATURE: 170°C MAX		DO NOT SCALE PRINT. UNLESS SPECIFIED DIMENSIONS IN mm [INCHES] TOLERANCES ON: 2 PLC DEC ± - 3 PLC DEC ± - ANGLES ± -		DR 1-26-93 GL KRUPER		AMP AMP Incorporated Harrisburg, PA 17105-3608	
FOR ADDITIONAL PRODUCT INFORMATION OR COPIES OF DRAWINGS AND TECHNICAL DOCUMENTS		VOLTAGE RATING: NOT APPLICABLE		MATERIAL COPPER PER ASTM B-152 ANNEALED		CHK 1-26-93 DA PATTERSON			
FOR APPLICATION TOOLING INFORMATION		TOOLING ASSISTANCE CENTER 1-800-722-1111		WIRE CROSS SECTIONAL AREA RANGE: 1.04-2.62mm² [2,050-5,180] CIR MILS STRANDED		APPD 1-26-93 DE MILLER		APPD 1-26-93 JL HECKLEY	
FOR ORDER ENTRY		1-800-526-5142		FINISH TIN PLATE 0.00254 [.000100] MIN THK PER MIL-T-10727		PRODUCT SPEC -		APPLICATION SPEC -	
AMP 1471-6 REV 3-82		THIS DRAWING IS A CONTROLLED DOCUMENT FOR AMP INCORPORATED. IT IS SUBJECT TO CHANGE AND THE CONTROLLING ENGINEERING ORGANIZATION SHOULD BE CONTACTED FOR THE LATEST REVISION.		SIZE C 00779		CAGE CODE 00779		DRAWING NO C-33729	
20 JUL 1993 15:31:46 AMP26463 <US128A>DEPT1123>DMG1123>U.800IES>U.16-14HD				WEIGHT -		SCALE 8:1		SHEET 1 OF 1	

CUSTOMER DRAWING