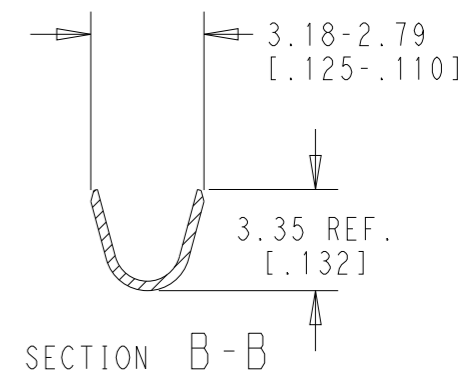
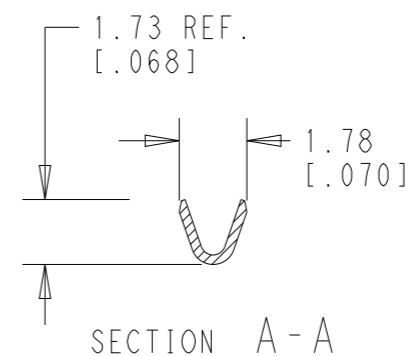
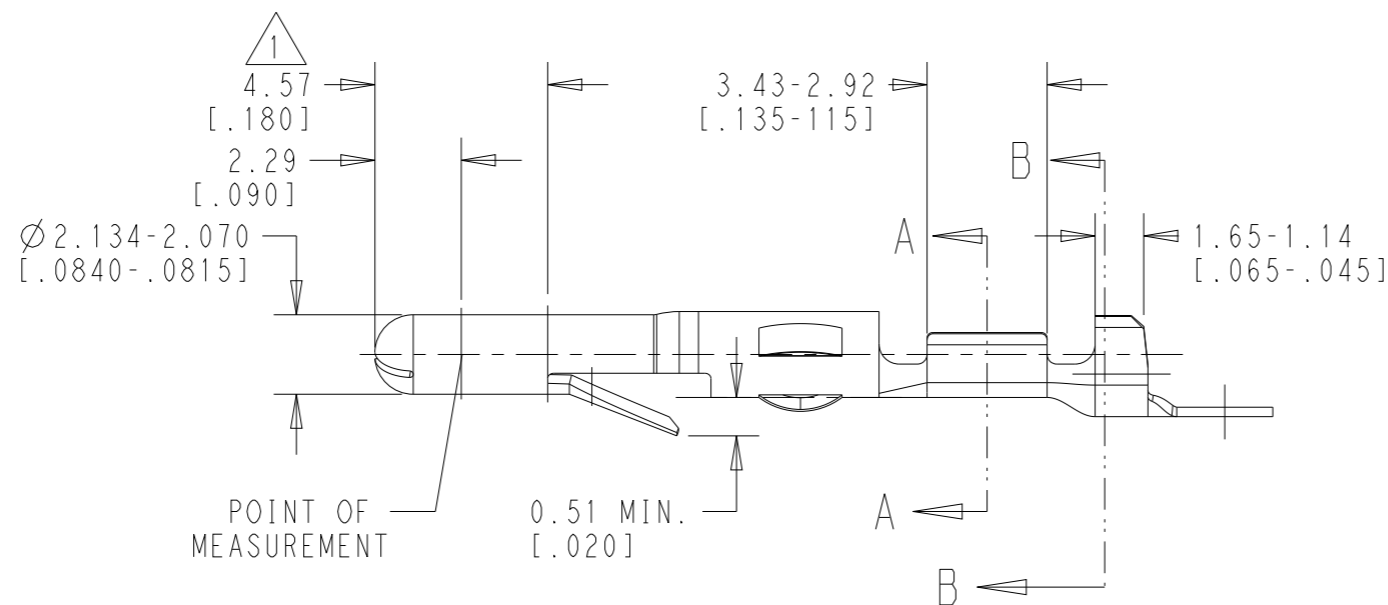
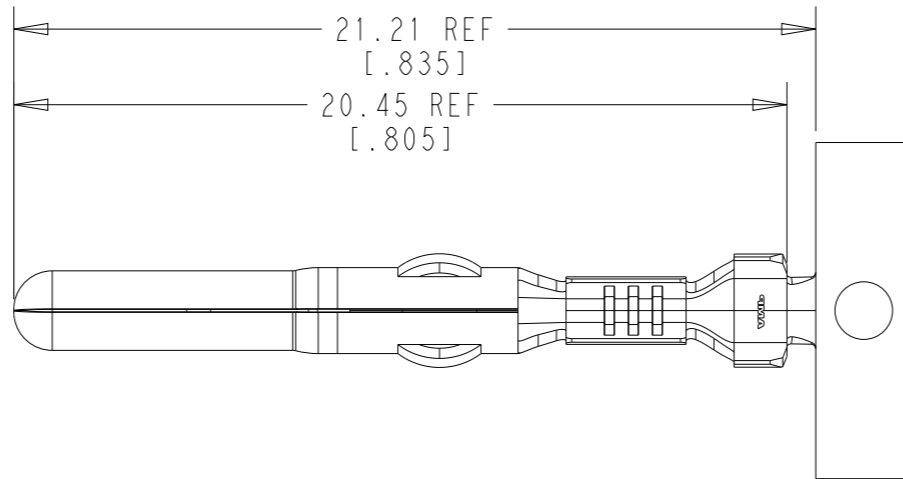
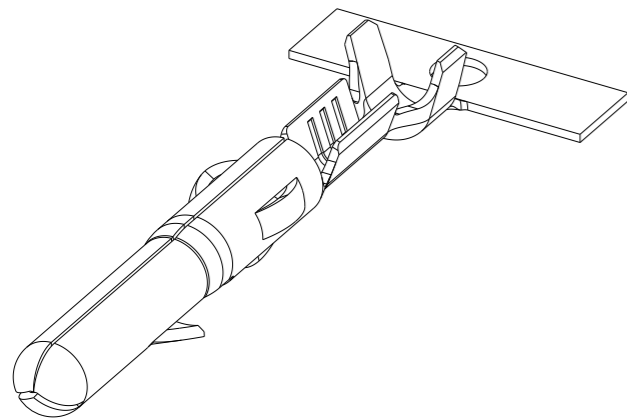


REVISIONS

P	LTR	DESCRIPTION	DATE	DWN	APVD
	U2	REVISED PER ECR-12-013810	24SEP2012	JR	TM
	U3	REVISED PER ECN-23-233438	02OCT2023	WLS	VS



NOTES:

1 PLATE OVERALL WITH 0.00127 [.000050] MIN NICKEL, THEN PLATE INSIDE OF WIRE BARREL AND ON TIP OF PIN WITH 0.00076 [.000030] MIN GOLD.

2. WIRE RANGE: 0.05 - 0.4mm² [30 - 22 AWG].

3. INSULATION RANGE: 1.02-1.91 [.040-.075] DIA.

4. DIMENSIONS IN BRACKETS ARE IN INCHES.

FINISH	MATERIAL	PART NO
1	0.30 [.012] BRASS	350079-5
PRE-TIN	0.30 [.012] PH BRZ	350079-4
PRE-TIN	0.30 [.012] BRASS	350079-1

THIS DRAWING IS A CONTROLLED DOCUMENT.		DWN K. SALMON 15FEB1993														
DIMENSIONS: mm [INCHES]		CHK R. SWING 15FEB1993														
TOLERANCES UNLESS OTHERWISE SPECIFIED:		APVD C. MARTIN 22FEB1993	NAME PIN COMMERCIAL MATE-N-LOK													
<table border="1"> <tr><td>0 PLC</td><td>±</td></tr> <tr><td>1 PLC</td><td>±</td></tr> <tr><td>2 PLC</td><td>±0.25 [.010]</td></tr> <tr><td>3 PLC</td><td>±</td></tr> <tr><td>4 PLC</td><td>±</td></tr> <tr><td>ANGLES</td><td>±1°</td></tr> </table>		0 PLC	±	1 PLC	±	2 PLC	±0.25 [.010]	3 PLC	±	4 PLC	±	ANGLES	±1°	PRODUCT SPEC 108-1000	SIZE A3	
0 PLC	±															
1 PLC	±															
2 PLC	±0.25 [.010]															
3 PLC	±															
4 PLC	±															
ANGLES	±1°															
MATERIAL SEE TABLE		APPLICATION SPEC 114-1012	CAGE CODE 00779	DRAWING NO C-350079												
FINISH SEE TABLE		WEIGHT -	RESTRICTED TO -													
		CUSTOMER DRAWING	SCALE 5:1	SHEET 1 OF 1												
			REV U3													