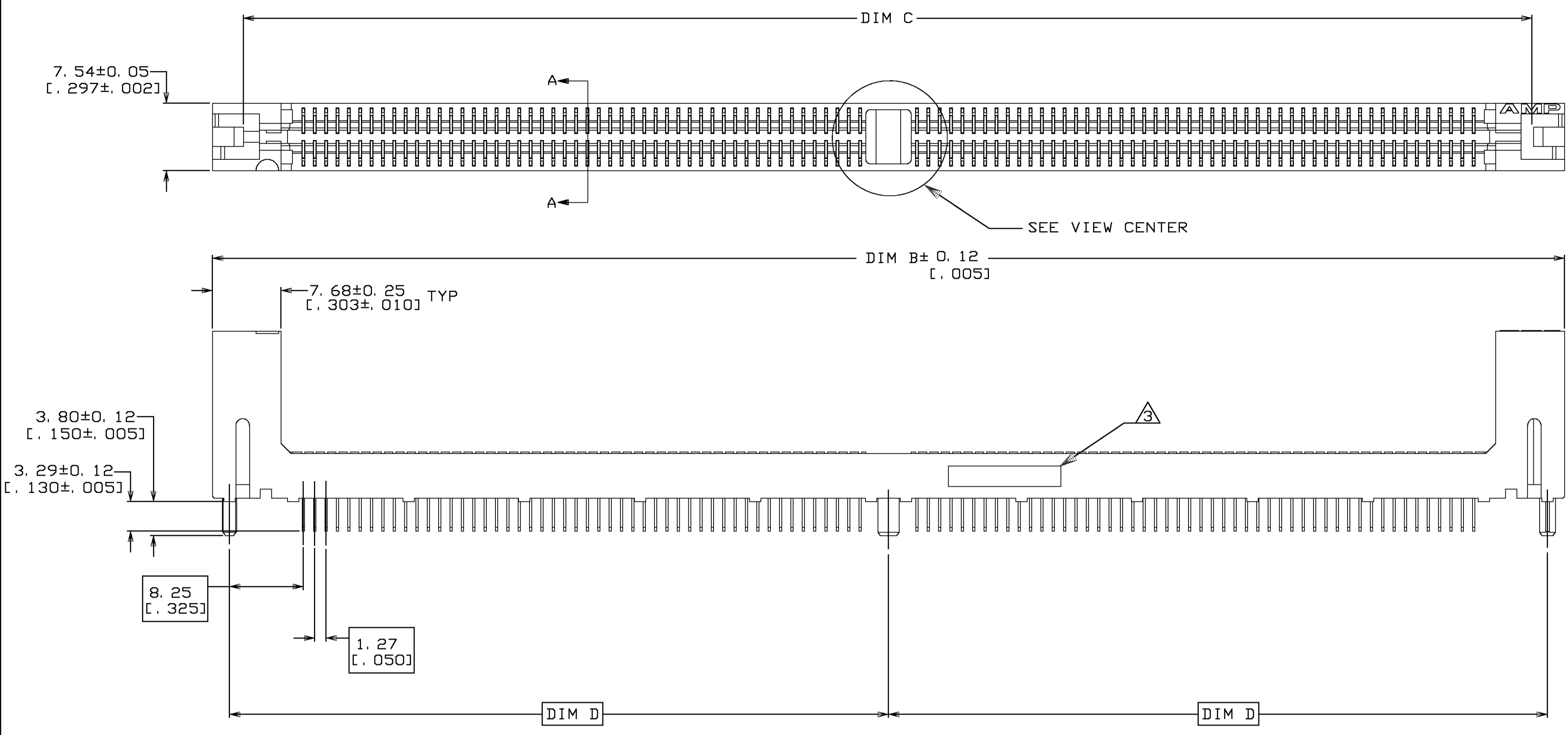
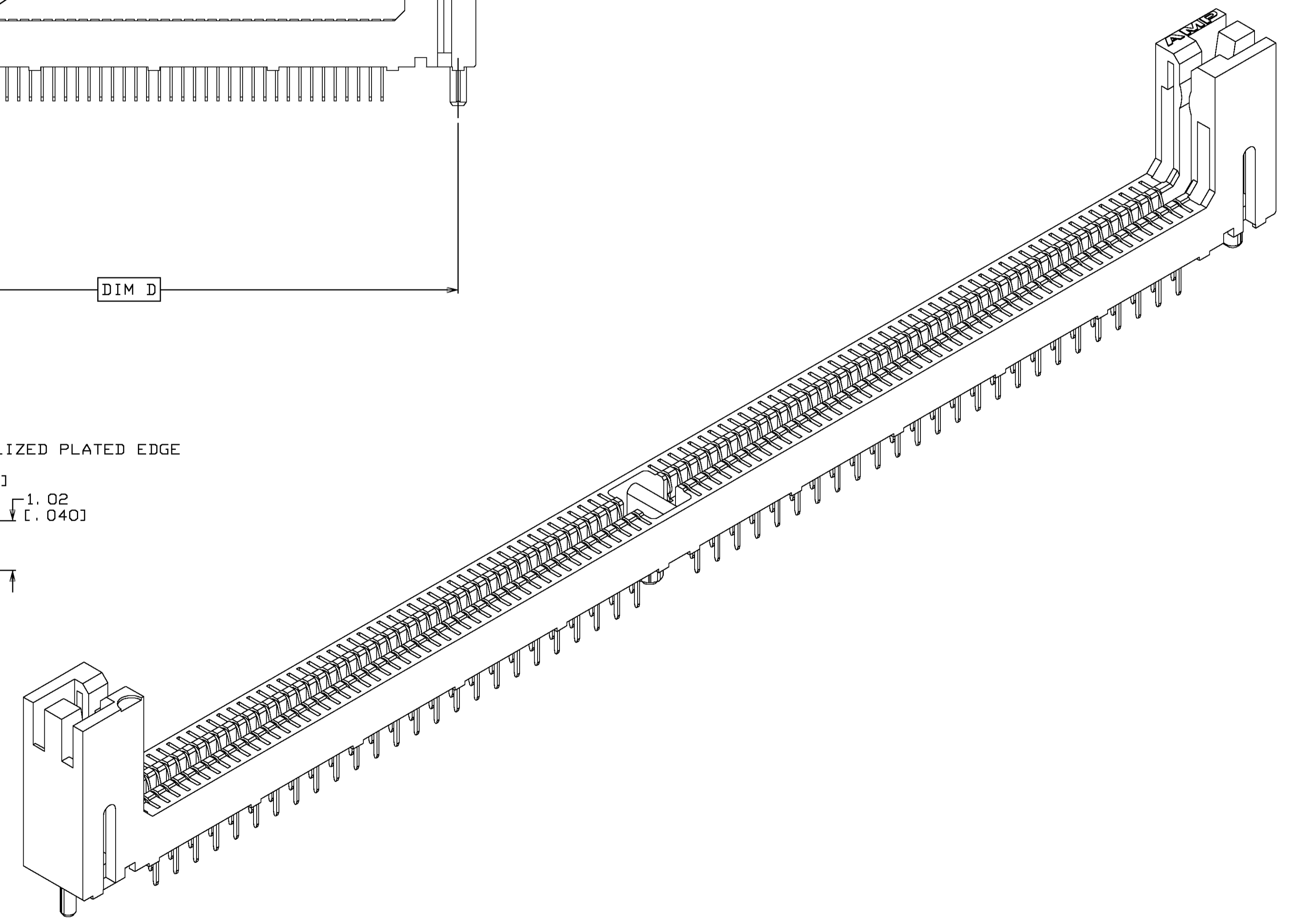
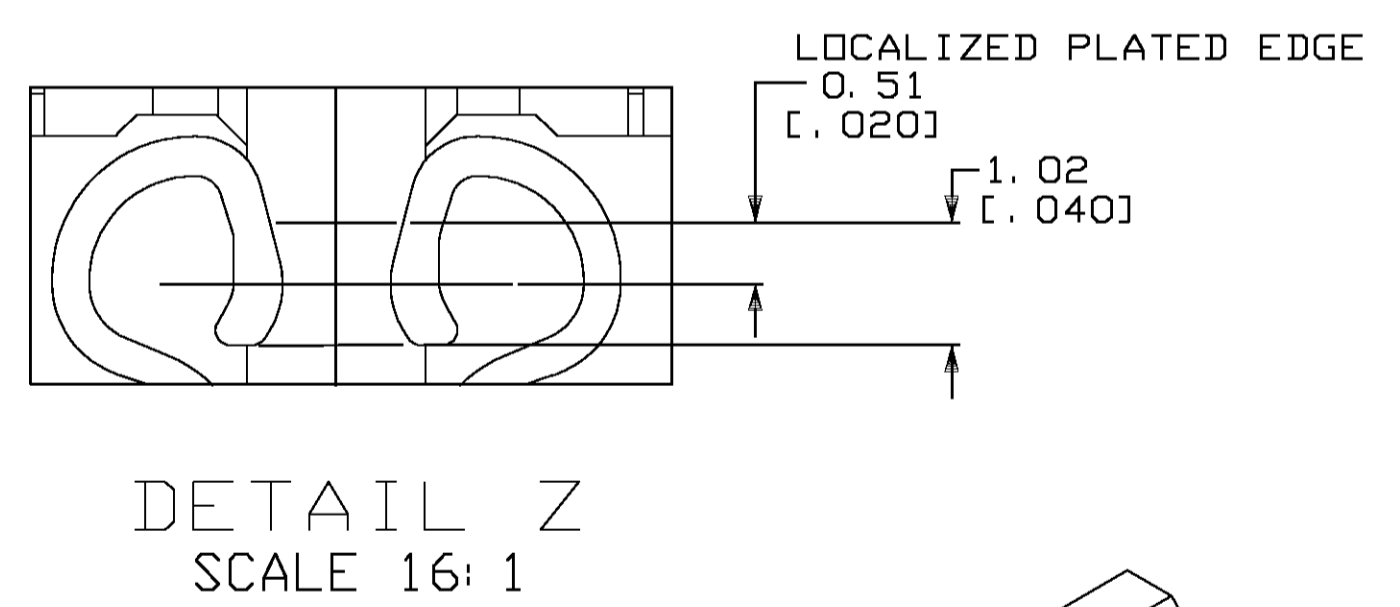
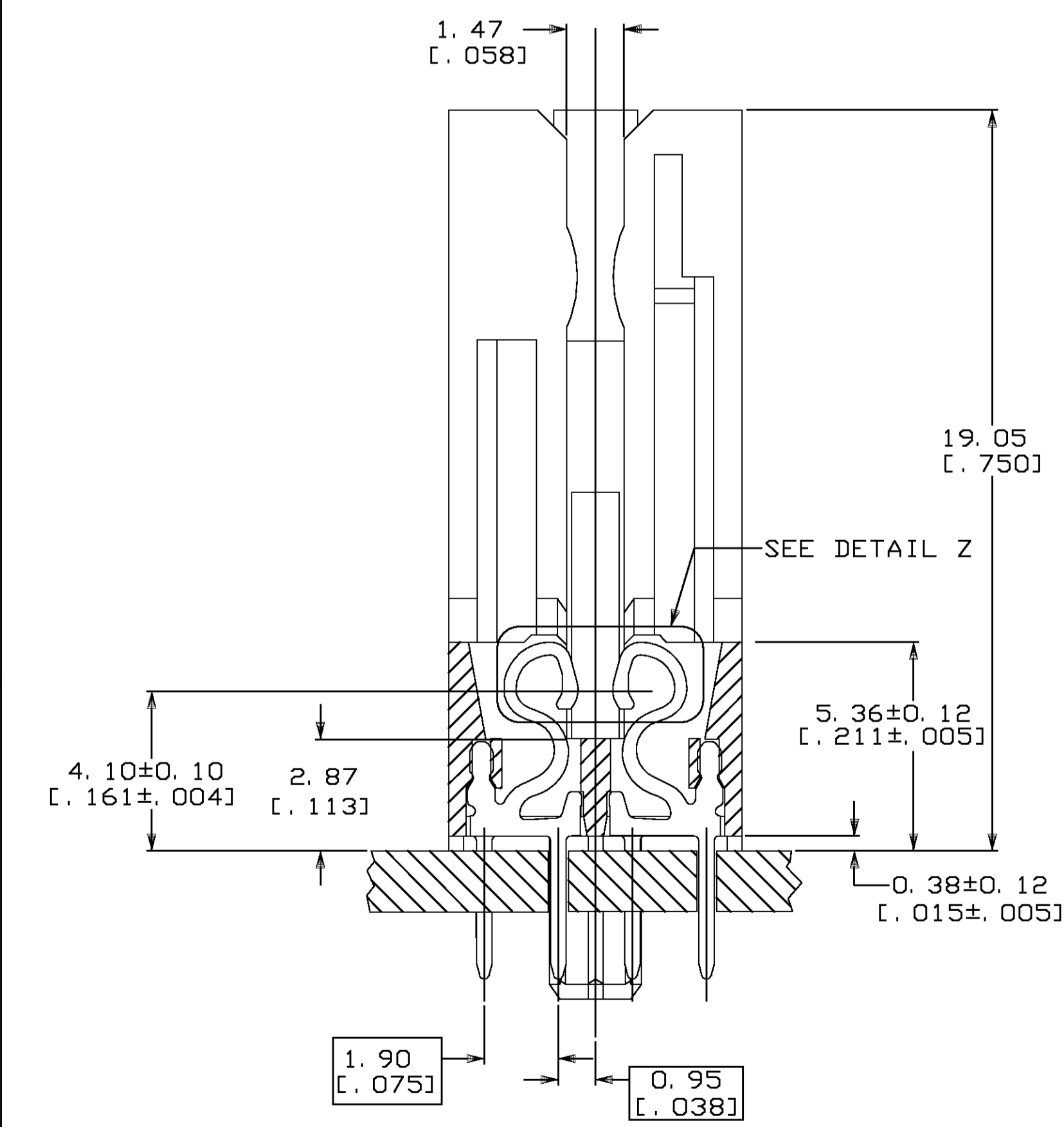


LOC		DIST		REVISIONS			
GP	00	F	LTR	DESCRIPTION	DATE	BY	APPD
B	REV PER EC	0511-0145-04			09JUL04	BC	DS



- 1 PLATING- CONTACT MATING AREA, 0.00076 [.000030] MIN THK GOLD ON MATING EDGE OF SOLDER TAIL, 0.00381 [.000150] MIN THK TIN-LEAD UNDERPLATE, 0.00127 [.000050] MIN THK NICKEL OVER ENTIRE CONTACT. BASE MATERIAL: PHOSPHOR BRONZE.
- 2 PLASTIC INSULATOR MATERIAL, GLASS FILLED, HIGH TEMPERATURE NYLON. COLOR, BLACK.
- 3 DATE CODE INFORMATION (YEAR, WEEK, DAY), LOCATED APPROXIMATELY AS SHOWN.
- 4 FOR OPTIMAL PERFORMANCE, CONTACT PAD PLATING SHOULD BE SMOOTH AND FLAT. COPPER CONTACT PADS ARE TO BE OVERPLATED WITH 0.00127 [.000050] MIN THK NICKEL FOLLOWED WITH 0.00076 [.000030] MIN THK HARD GOLD PLATING. LEADING EDGES OF MODULE SHOULD BE FREE OF SHARP CORNERS.
5. SOLDER TAIL X-SECTION 0.40 x 0.25 [.016 x .010]

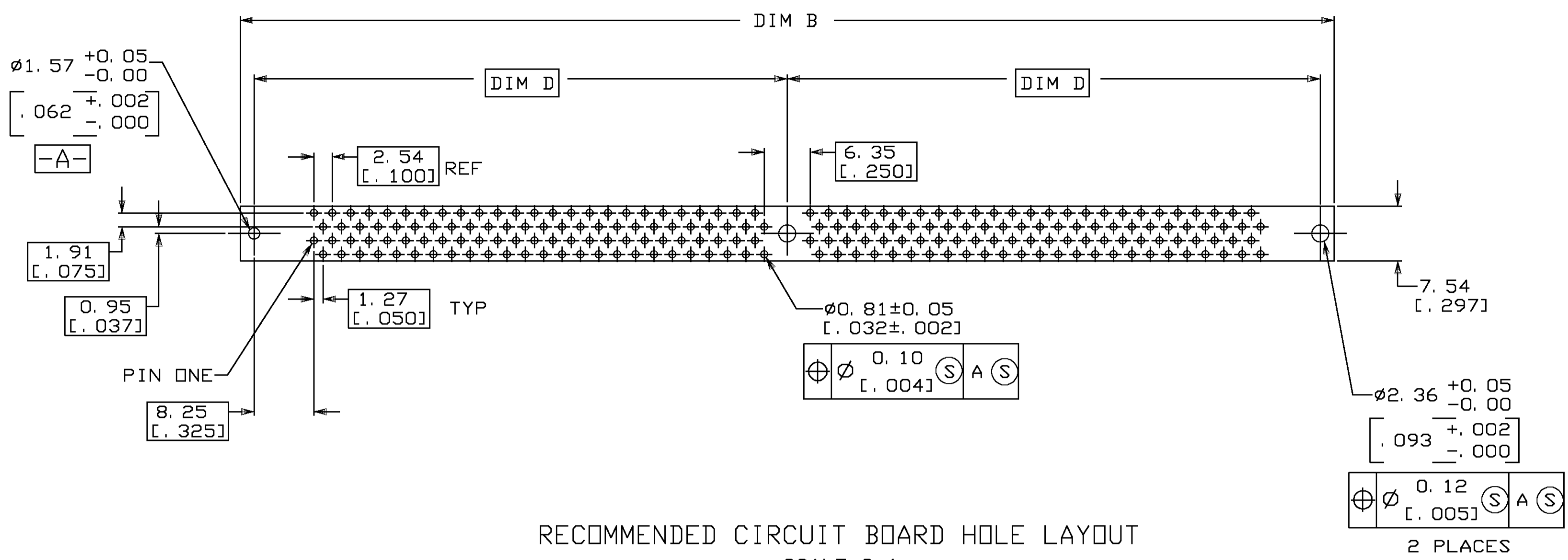


130.81 [5.150]	143.51 [5.650]	73.66 [2.900]	143.76 [5.660]	151.13 [5.950]	136.75 [5.384]	100	200	390374-1
DIM F	DIM E	DIM D	DIM C	DIM B	DIM A	POSITION	NO. OF INPUT/OUTPUT	PART NO.

THIS DRAWING IS A CONTROLLED DOCUMENT.		DWG J. BURWELL 13APROD	Tyco Electronics Corporation	
DIMENSIONS: MM		CHK D. SHIRLING 13APROD	NAME	
TOLERANCES UNLESS OTHERWISE SPECIFIED:		APPRO D. SHIRLING 13APROD	SOCKET ASSEMBLY, DUAL READ OUT SIMM II	
0 PLC ± -	1 PLC ± -	PRODUCT SPEC	STANDARD CARD GUIDES, SINGLE ROW, NO EXTRACTORS	
2 PLC ± -	3 PLC ± -	APPLICATION SPEC	1.27 [.050] (FULL WIPE)	
4 PLC ± -	ANGLES ± ± 0.08 [.003]	SIZE	CAGE CODE	DRAWING NO
MATERIAL	FINISH	WEIGHT	A1	00779
CUSTOMER DRAWING		SCALE	1:1	SHEET 1 OF 2

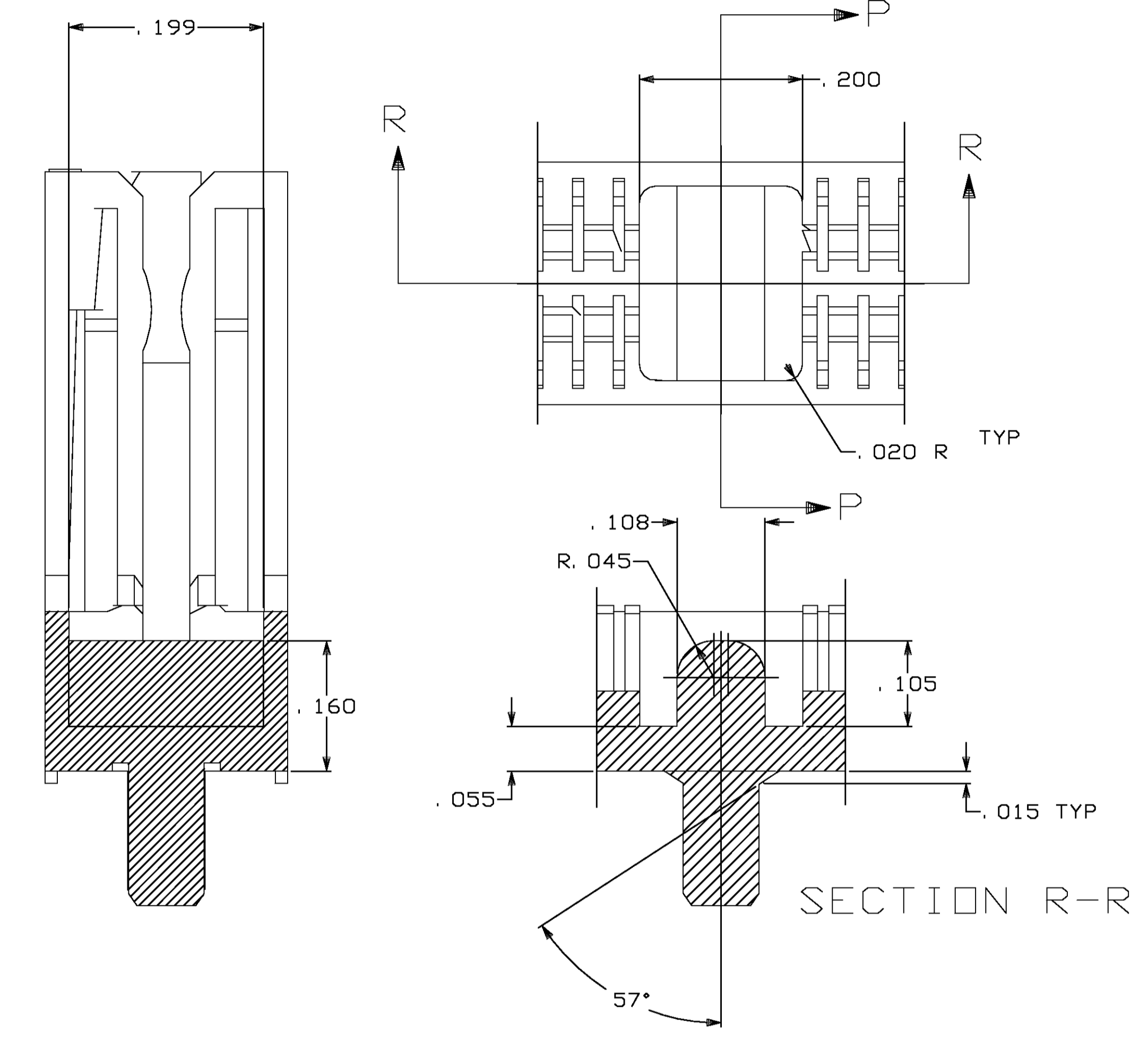
LOC		DIST		REVISIONS			
GP	00	P	LTR	DESCRIPTION	DATE	DN	APD
-	-	-	-	SEE SHEET 1	-	-	-

VIEW CENTER
SCALE 8: 1

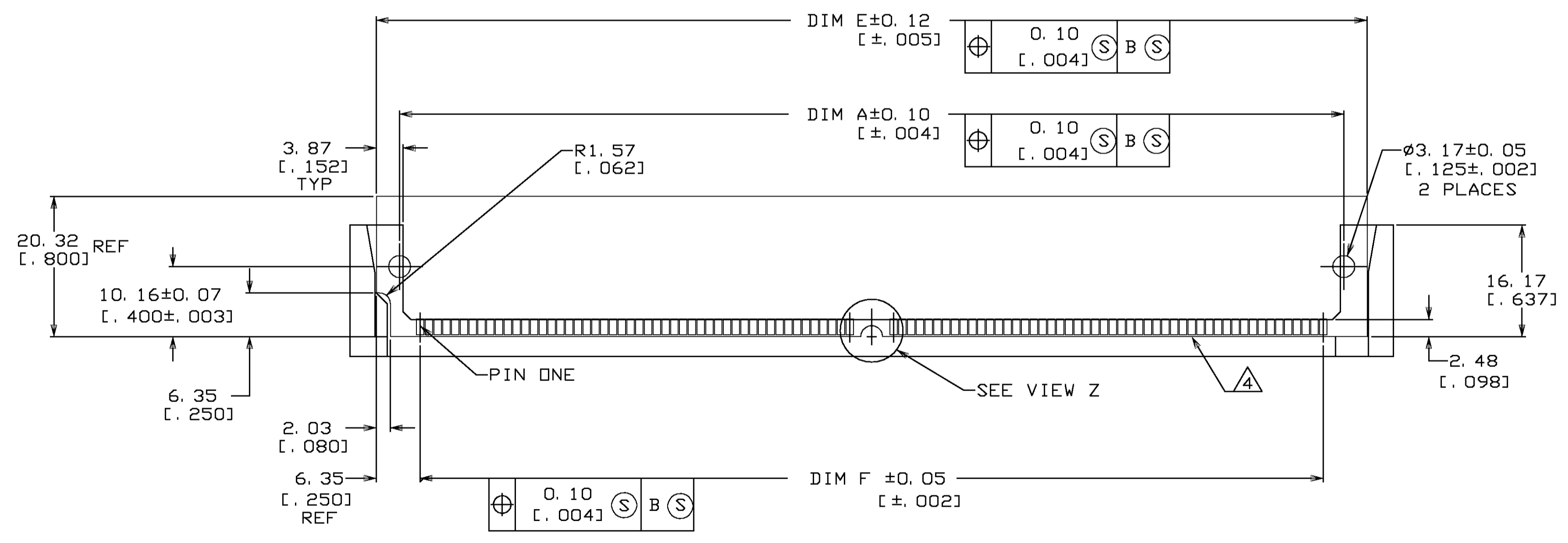


RECOMMENDED CIRCUIT BOARD HOLE LAYOUT
SCALE 2: 1
HOLE PATTERN AND RELATED DIMENSIONS

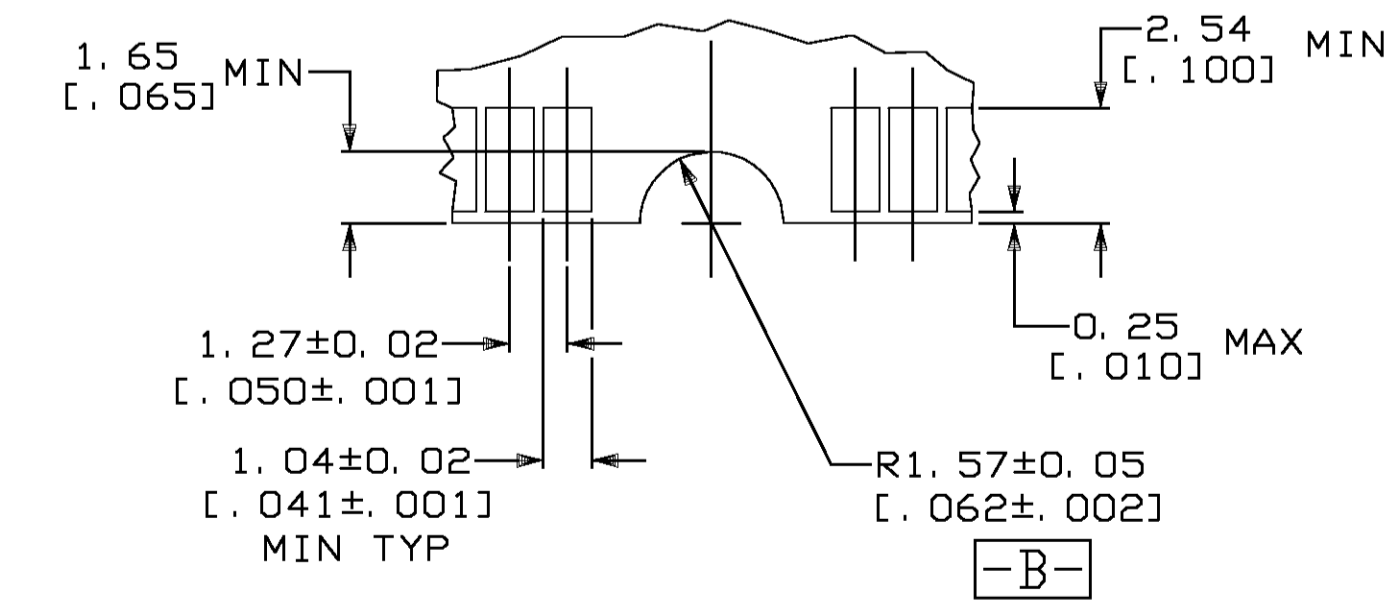
SECTION P-P



SECTION R-R



RECOMMENDED MODULE LAYOUT
SCALE 2: 1
1.27 ± 0.10 [L. 050 ± .004] THK ACROSS CONTACT PADS
MODULE CONFIGURATION AND RELATED DIMENSIONS



VIEW Z
SCALE 6: 1

THIS DRAWING IS A CONTROLLED DOCUMENT.		DIN J. BURWELL 13APROD	Tyco Electronics Corporation																							
DIMENSIONS:		CHK D. SHIRLING 13APROD																								
TOLERANCES UNLESS OTHERWISE SPECIFIED:		APD D. SHIRLING 13APROD	NAME: SOCKET ASSEMBLY, DUAL READ OUT, SIMM II PRODUCT SPEC: STANDARD CARD GUIDES, SINGLE ROW, NO EXTRACTORS APPLICATION SPEC: 1.27 [L. 050] (FULL WIPE)																							
<table border="1"> <tr><td>0 PLC</td><td>±</td><td>-</td></tr> <tr><td>1 PLC</td><td>±</td><td>-</td></tr> <tr><td>2 PLC</td><td>±</td><td>0.08 [L. 003]</td></tr> <tr><td>3 PLC</td><td>±</td><td>-</td></tr> <tr><td>4 PLC</td><td>±</td><td>-</td></tr> <tr><td>ANGLES</td><td>±</td><td>-</td></tr> <tr><td>FINISH</td><td>±</td><td>-</td></tr> </table>		0 PLC		±	-	1 PLC	±	-	2 PLC	±	0.08 [L. 003]	3 PLC	±	-	4 PLC	±	-	ANGLES	±	-	FINISH	±	-	SIZE: A1	CAGE CODE: 00779	DRAWING NO: 390374
0 PLC	±	-																								
1 PLC	±	-																								
2 PLC	±	0.08 [L. 003]																								
3 PLC	±	-																								
4 PLC	±	-																								
ANGLES	±	-																								
FINISH	±	-																								
MATERIAL:		WEIGHT: -	CUSTOMER DRAWING	SCALE: 1:1	SHEET: 2 OF 2	REV: B																				