

C. Westby 12-6-91
APPROVED/DATE

1
REV

SAFETY ORGANIZATION(S).

THIS FILTER HAS BEEN FORMALLY RECOGNIZED, CERTIFIED OR APPROVED BY THE LISTED AGENCY. THEREFORE, ALL TEST/REQUIREMENTS SPECIFIED IN THE LATEST REVISION OF THE FOLLOWING AGENCY STANDARDS HAVE BEEN MET.

UL RECOGNIZED
UL 1283
CSA CERTIFIED
CSA 22.2, NO.0,0.4.8
VDE APPROVED
VDE 565-3
SEMKO APPROVED
SEMKO 432901

OPERATING SPECIFICATIONS.

LINE VOLTAGE/CURRENT:
3 AMP., 120/250 VAC
3 AMP./40°C, 250 VAC
50-60Hz

LINE FREQUENCY:

MAX. LEAKAGE CURRENT, EACH
LINE TO GROUND, 20mA at 120V 60 Hz
.33 mA at 250V 50 Hz
OPERATING AMBIENT TEMP. RANGE:
-10°C TO +40°C @ RATED CURRENT, I_r

IN AN AMBIENT, T_a, HIGHER THAN 40°C, THE MAXIMUM OPERATING CURRENT, I_o, IS AS FOLLOWS:

$$I_o = I_r \sqrt{\frac{85 - T_a}{45}}$$

RELIABILITY SPECIFICATIONS.

STORAGE TEMPERATURE:
-40°C TO +85°C
HUMIDITY:
21 DAYS @ 40°C 95% RH
CURRENT OVERLOAD TEST:
6 TIMES RATED CURRENT FOR 8 SECONDS

TEST SPECIFICATIONS.

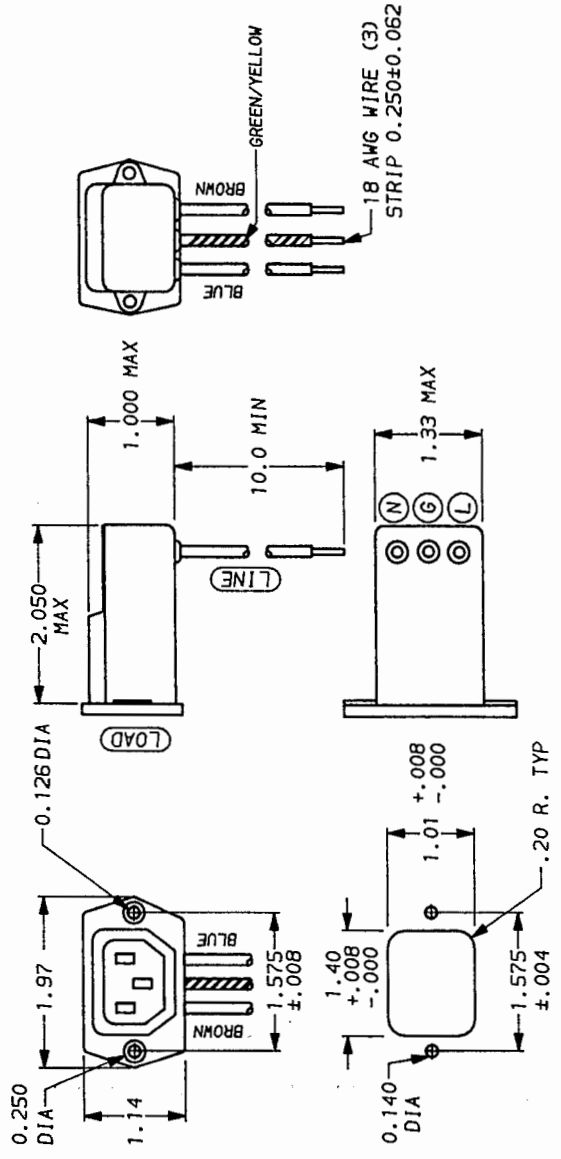
INDUCTANCE:
1.45 mH NOMINAL
CAPACITANCE, (MEASURED @ 1 KHz, 0.25 VAC MAX., 25°C ±1°C)
LINE TO GROUND, .003µF ±20%
LINE TO LINE, .047µF ±20%
DISCHARGE RESISTOR, 1.5 MΩ
LINE/GROUND AND LINE/LINE 6000 MΩ (MIN) AT 100 VDC
INSULATION RESISTANCE 20°C AND 50% RH (W/O DISCHARGE RESISTOR)

RECOMMENDED RECEIVING INSPECTION HIPOTL.

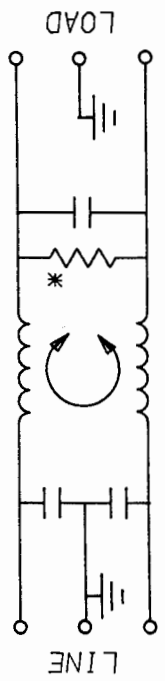
LINES TO GROUND, 2250 VDC FOR 1 MINUTE
LINE TO LINE, 1450 VDC FOR 1 MINUTE

FILTER APPROVAL.

THE BEST WAY TO SELECT AND QUALIFY A FILTER IS FOR YOUR ENGINEERING TO TEST THE UNIT IN YOUR EQUIPMENT.



THIS FILTER LINE AND LOAD ARE REVERSED; THE SOCKET IS LOAD.



TOLERANCE EXCEPT AS NOTED
DECIMAL: .XXX .XX .X ANGLES ± 1°
ENGLISH: ±.020
METRIC: ±

MATERIAL: AS SUPPLIED

FINISH: AS SUPPLIED

FREQUENCY MHZ	.05	.1	.15	.5	1	3	5	10	30
COMMON	10	15	19	30	36	39	48	50	47
DIFF. dB	-	1	2	11	14	25	38	44	40

This document is proprietary to CORCON INC. and is not to be reproduced nor used for manufacturing purposes except on CORCON's order or prior written consent.



ACCESSORY OUTLET FILTER

SCALE NTS 9-20-91
DATE 9-20-91
REV. 3EBF4.01
DWR. BY CFW
CFW

*RESISTOR ADDED TO PRODUCT BUILT AFTER 3-30-92 (9212)