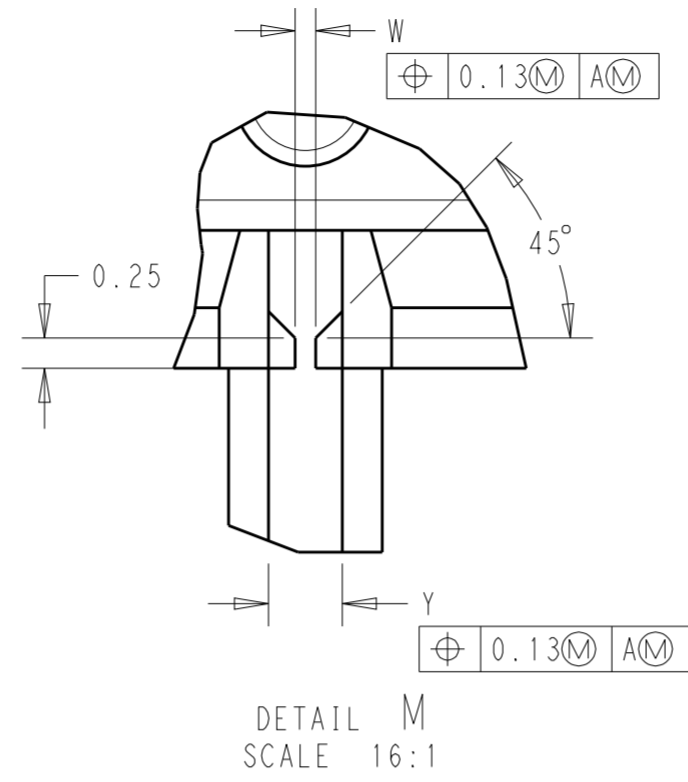
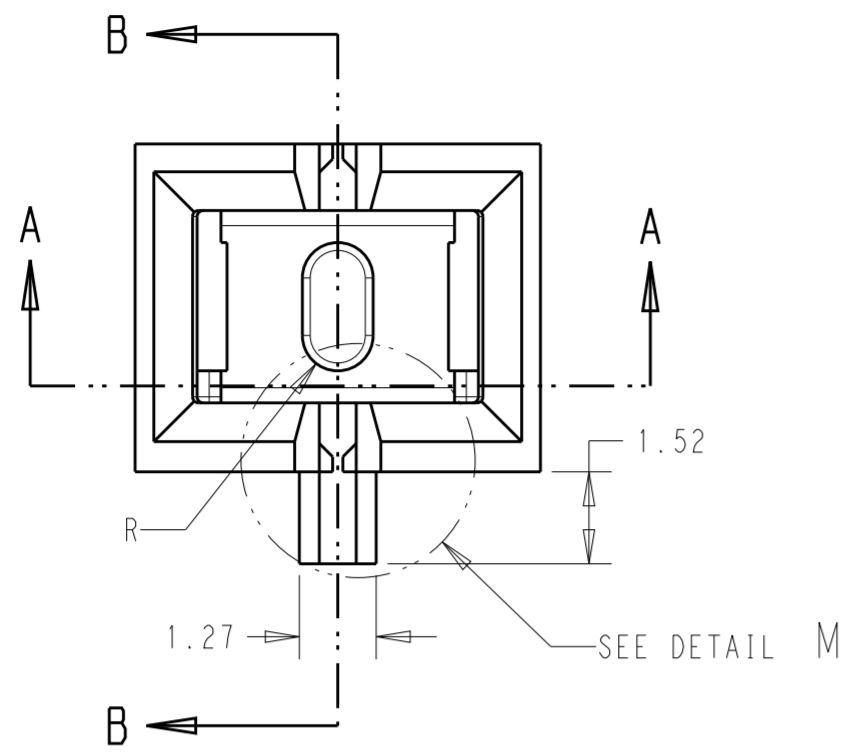
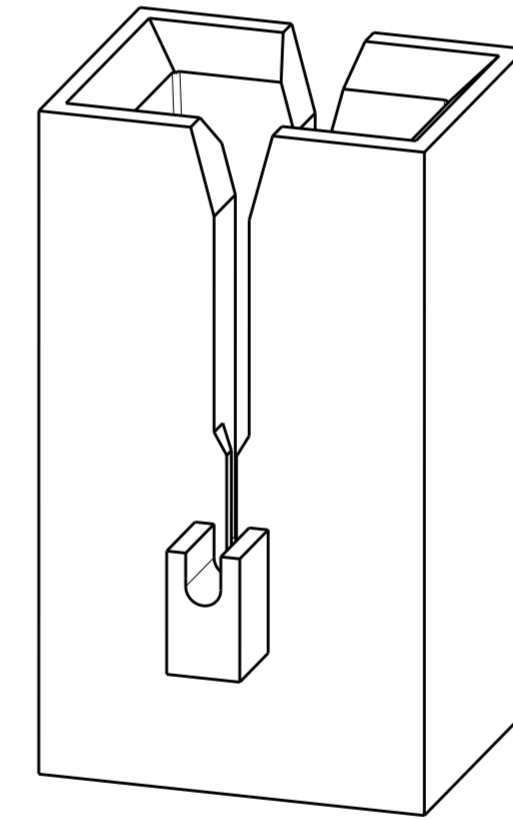
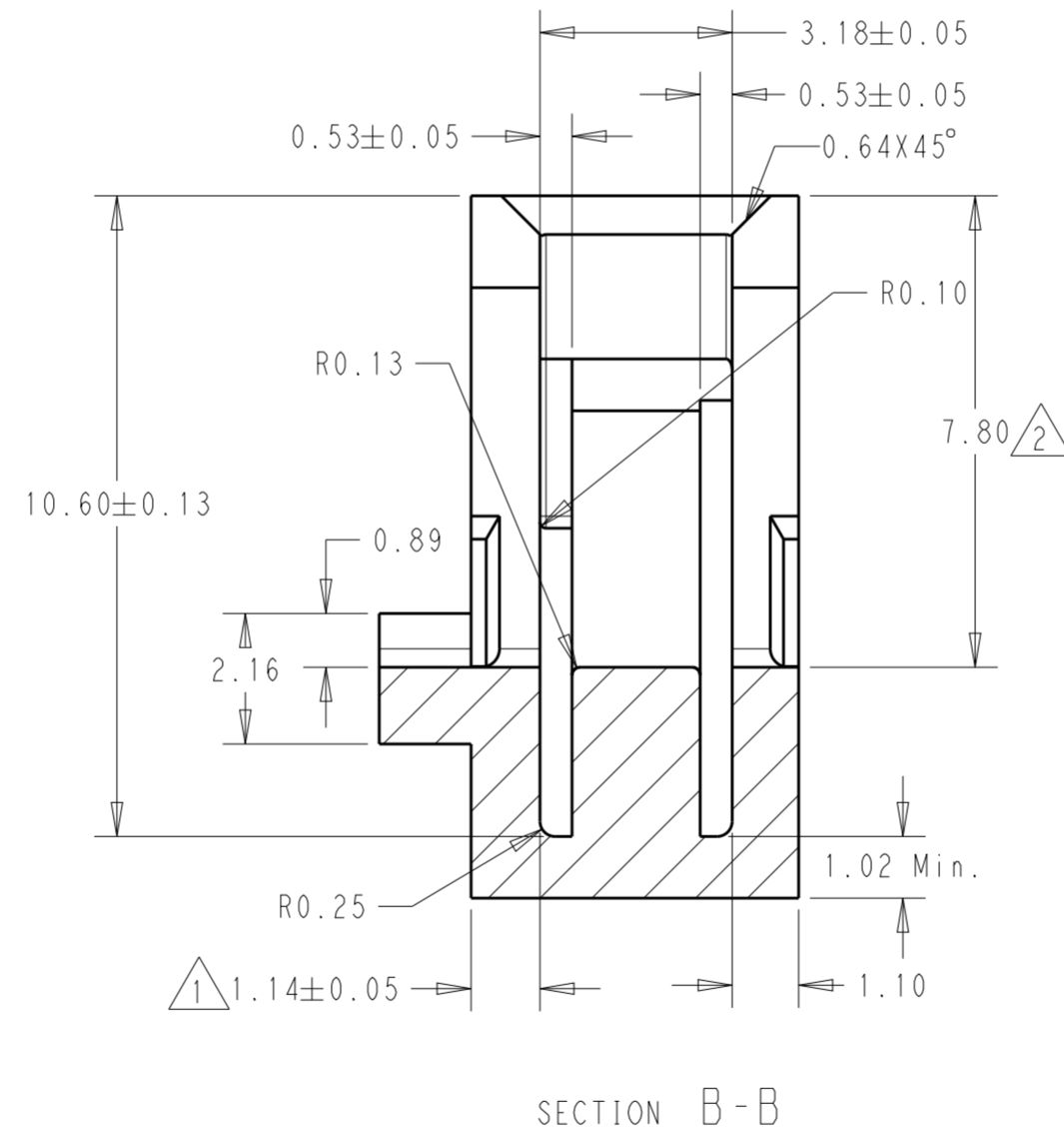
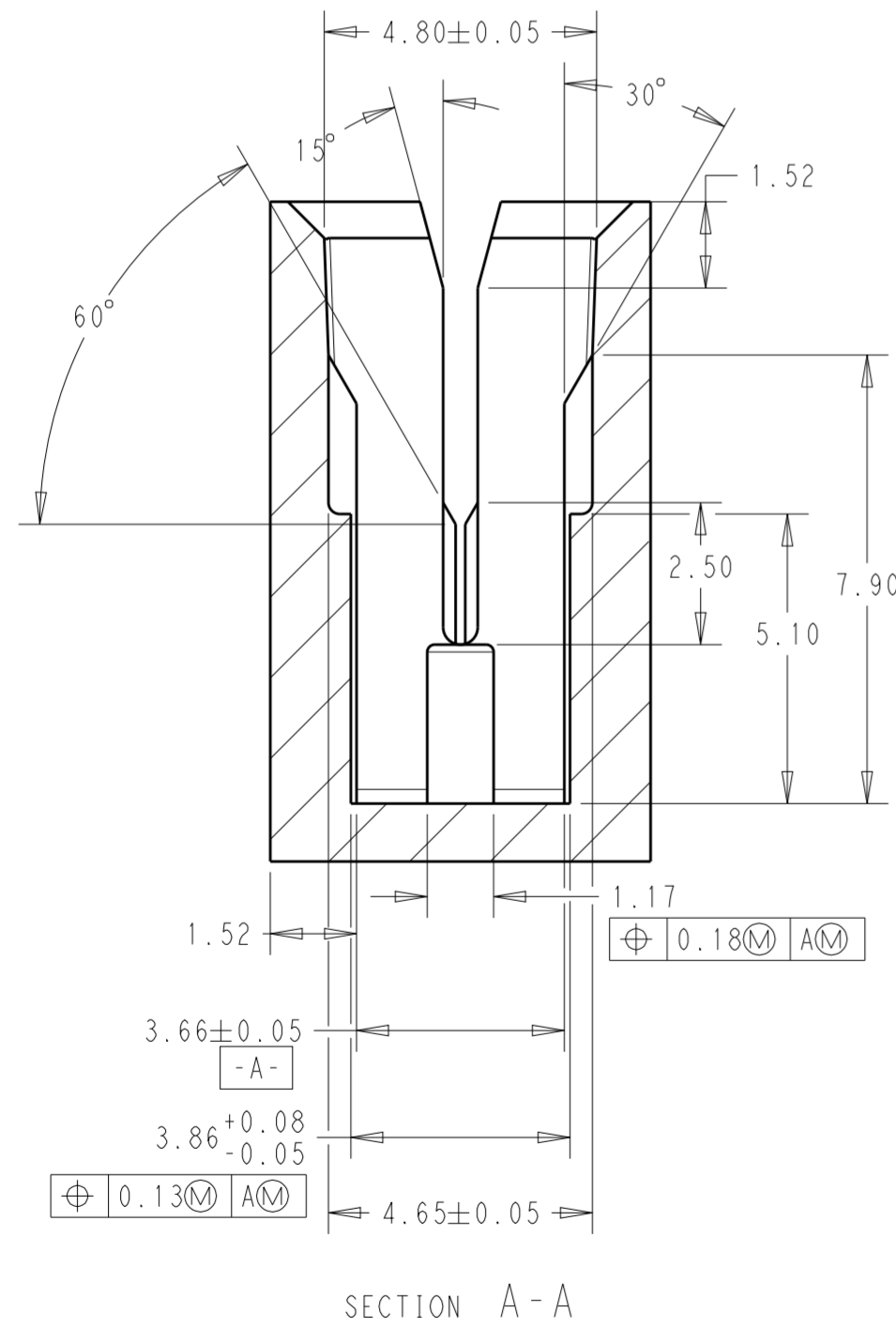


P	LTR	DESCRIPTION	DATE	DWN	APVD
1		INITIAL RELEASE	30JAN2019	JH	PKS



NOTES:

- 1 THE WALL THICKNESS AT THE CUT OFF SIDE MUST BE SAME AT ALL CAVITIES.
- 2 IT MUST BE GUARANTEED THAT THE MAGNET WIRE WILL TOUCH THE BOTTOM OF SLOT AND ANVIL. COIL WINDINGS OR OTHER PARTS HAVE TO BE LOWER THAN THE WIRE SLOT OF THE CAVITY TO GUARANTEE OPTIMIZED CONNECTIONS.
- 3 RECOMMENDED THERMOPLASTIC MATERIAL: GLASS FILLED (MIN. 10%, MAX. 30%)
- 4 DRAFT ANGLES MUST BE HELD WITHIN THE FEATURE TOLERANCE.
- 5 A WIRE TIE-OFF POST IS RECOMMENDED STARTING A MAGNET WIRE <math>\varnothing 0.23\text{mm}</math>.



1.42	0.88	0.86-1.15
1.13	0.62	0.61-0.86
0.87	0.36	0.36-0.61
0.61	0.17	0.18-0.36
$Y \pm 0.10$	$W + 0 / - 0.05$	MAGNET WIRE DIAMETER (mm)

THIS DRAWING IS A CONTROLLED DOCUMENT.		DWN JUSTIN HUANG 29 JAN 2019	TE Connectivity															
DIMENSIONS: mm		CHK JUSTIN HUANG 29 JAN 2019																
TOLERANCES UNLESS OTHERWISE SPECIFIED:		APVD SENTHIL KUMAR 29 JAN 2019	NAME CAVITY FOR MAG-MATE TRMINAL WITH EXTENDED LEAF-SPRING															
<table border="1"> <tr><td>0 PLC</td><td>±</td></tr> <tr><td>1 PLC</td><td>±</td></tr> <tr><td>2 PLC</td><td>±0.10</td></tr> <tr><td>3 PLC</td><td>±</td></tr> <tr><td>4 PLC</td><td>±</td></tr> <tr><td>ANGLES</td><td>±1°</td></tr> <tr><td>FINISH</td><td>-</td></tr> </table>		0 PLC	±	1 PLC	±	2 PLC	±0.10	3 PLC	±	4 PLC	±	ANGLES	±1°	FINISH	-	PRODUCT SPEC 108-2012	SIZE A2	
0 PLC	±																	
1 PLC	±																	
2 PLC	±0.10																	
3 PLC	±																	
4 PLC	±																	
ANGLES	±1°																	
FINISH	-																	
MATERIAL 3		APPLICATION SPEC 114-2046	CAGE CODE 00779	DRAWING NO 411-106410														
		WEIGHT -	RESTRICTED TO -															
		CUSTOMER DRAWING	SCALE 8:1	SHEET 1 OF 1														
			REV A															