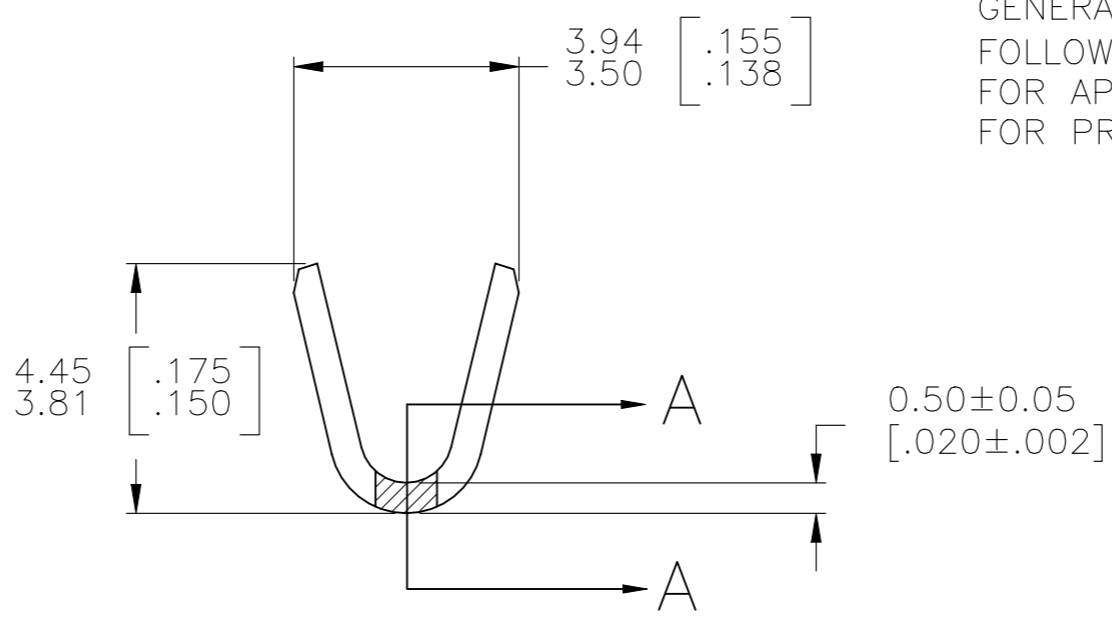
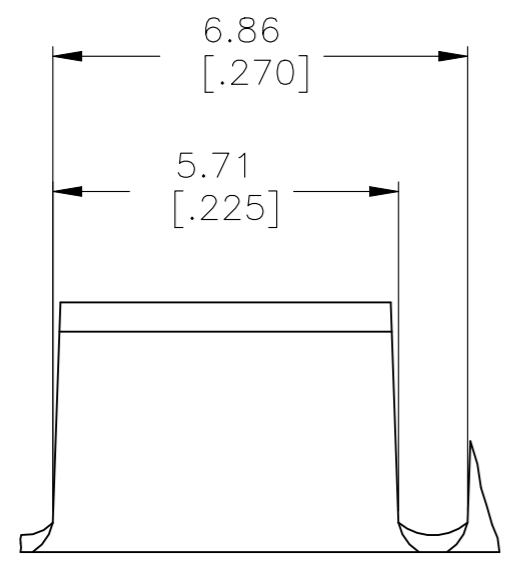
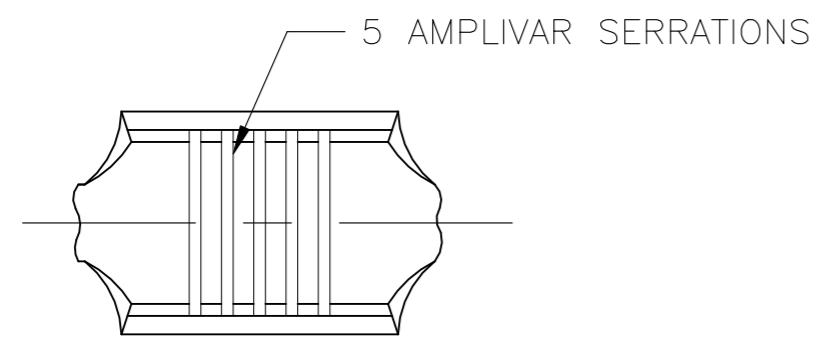


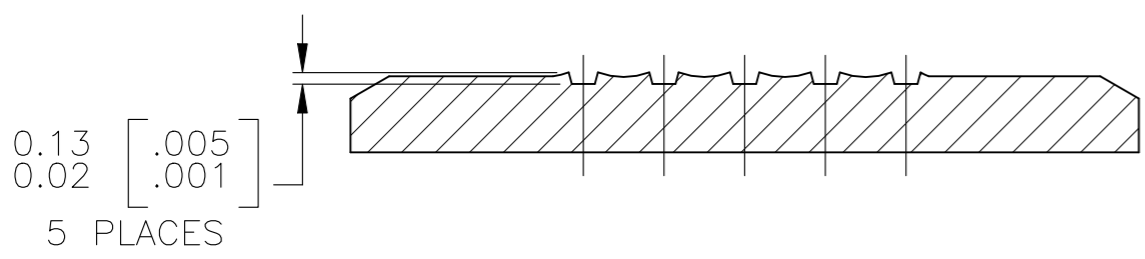
THIS DRAWING IS UNPUBLISHED. RELEASED FOR PUBLICATION  
 © COPYRIGHT BY TYCO ELECTRONICS CORPORATION. ALL RIGHTS RESERVED.

| LOC | DIST | REVISIONS |     |               |         |     |      |
|-----|------|-----------|-----|---------------|---------|-----|------|
| AF  | 50   | P         | LTR | DESCRIPTION   | DATE    | DWN | APVD |
|     |      |           | F2  | ECR-24-218720 | 28AUG24 | PS  | JH   |



- CONTINUOUS STRIP ON REELS.
- DIMENSIONS IN BRACKETS ARE IN INCHES.
- FOR ADDITIONAL INFORMATION, SEE APPLICATION SPEC. 114-2009.
- WIRE RANGE: 1500 - 5000 CMA.
- CRIMP WIDTH: .110 F TYPE (AMPLIVAR THRU)  
 CRIMP HEIGHT (±.002)=(TOTAL CMA+10,700)/193,400  
 GENERAL APPLICATION GUIDELINES MUST BE FOLLOWED AS SPECIFIED IN CATALOG #82221  
 FOR APPLICATOR INFORMATION CALL:1-800-722-1111  
 FOR PRODUCT INFORMATION CALL:1-800-522-6752

**OBSOLETE**



SECTION A-A  
SCALE 20:1

|          |                         |           |         |
|----------|-------------------------|-----------|---------|
| OBSOLETE | FORGIEN PRODUCTION ONLY | TIN PLATE | 42119-2 |
| OBSOLETE |                         |           | 42119-1 |
|          |                         | FINISH    | PART NO |

|  |  |                         |  |                 |
|--|--|-------------------------|--|-----------------|
| THIS DRAWING IS A CONTROLLED DOCUMENT. |  | DWN RAGHAVENDRA 29JUN06 | <b>tyco Electronics</b> Tyco Electronics Corporation Harrisburg, PA 17105-3608 |                 |
| DIMENSIONS: mm [INCHES]                | TOLERANCES UNLESS OTHERWISE SPECIFIED: | CHK G.D.PORTA           | APVD G.D.PORTA NAME  |                 |
|  | 0 PLC ± -                              | PRODUCT SPEC            | APPLICATION SPEC   |                 |
|  | 1 PLC ± -                              |                         |  |                 |
|  | 2 PLC ± -                              |                         |  |                 |
|  | 3 PLC ± 0.38 [.015]                    |                         |  |                 |
|  | 4 PLC ± -                              |                         |  |                 |
|  | ANGLES ± 1° 0'                         |                         |  |                 |
| MATERIAL BRASS                         | FINISH SEE TABLE                       | WEIGHT -                | SIZE A3  | CAGE CODE 00779 |
|  |  |                         | DRAWING NO C-42119   |                 |
| CUSTOMER DRAWING                       |  |                         | SCALE 8:1  | SHEET 1 OF 1    |
|  |  |                         | REV F2   | RESTRICTED TO - |