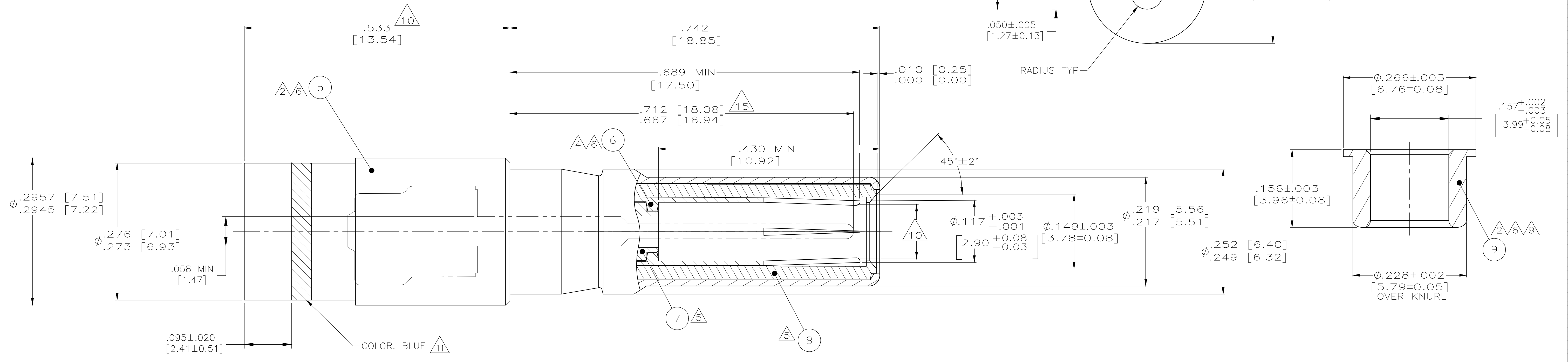
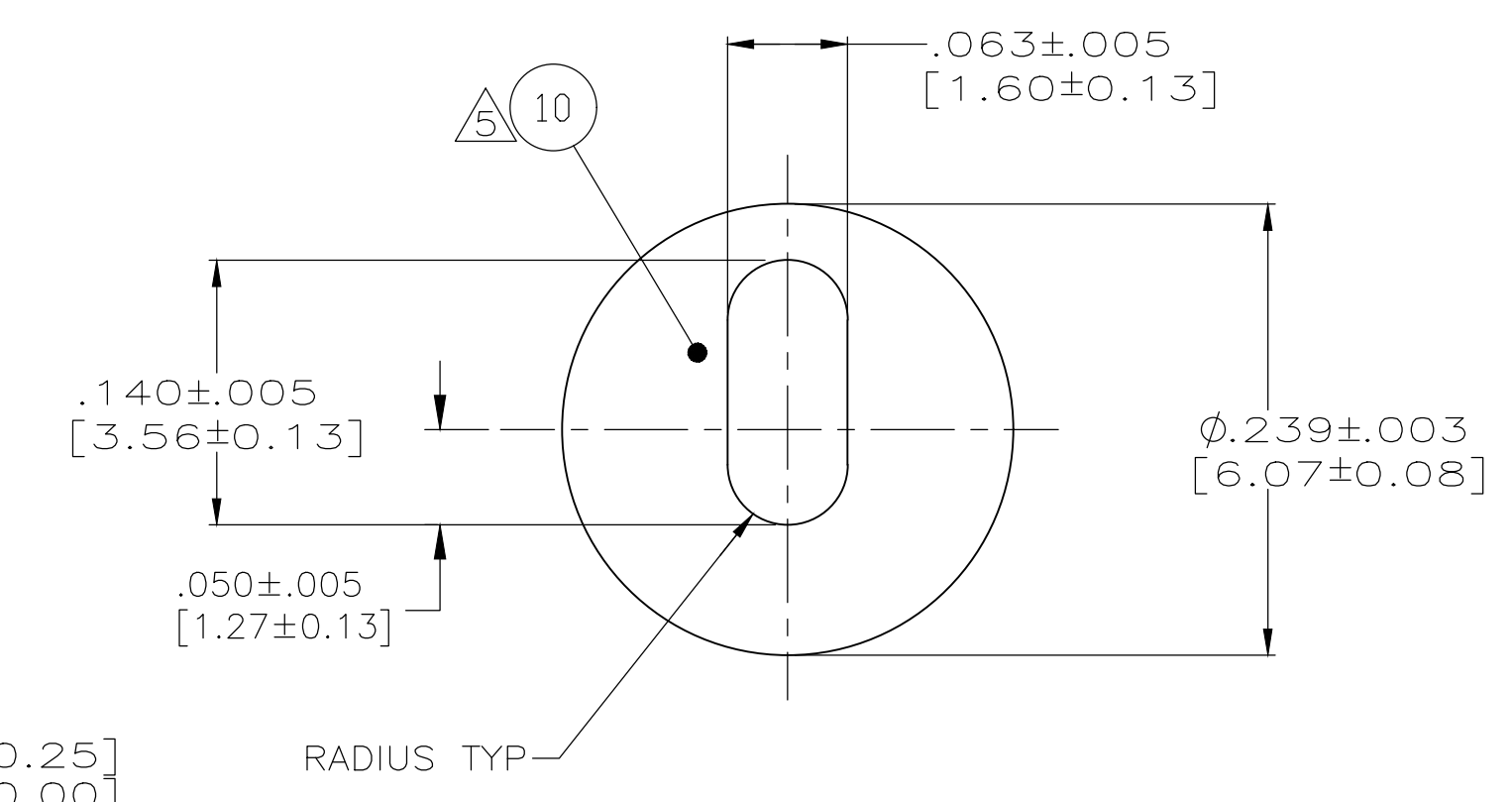
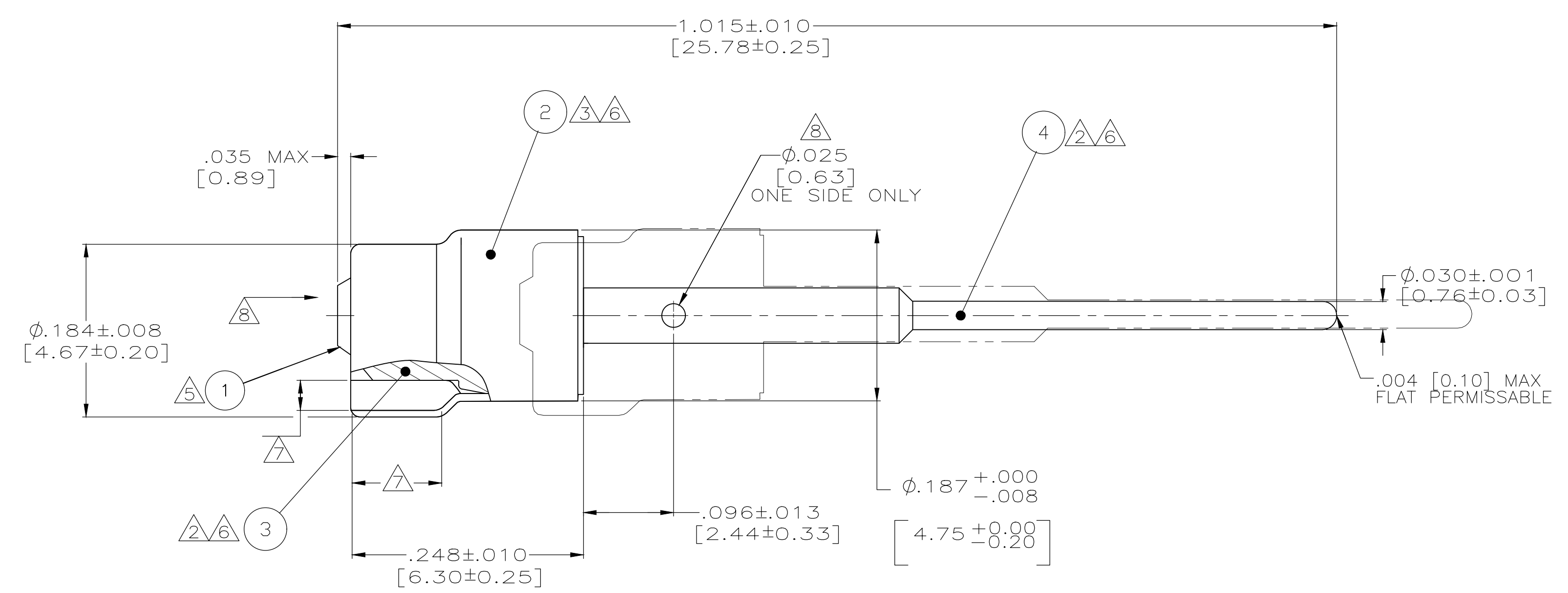


REVISIONS					
P	LTR	DESCRIPTION	DATE	OWN	APVD
G	REV PER ECO	19-007393	5-14-19	CT	RL

- PRODUCT DESIGNED TO MEET BOEING S280W552 DRAWING.
- MAT'L: BRASS PER ASTM-B-16
- MAT'L: COPPER PER ASTM-B-152.
- MAT'L: BERYLLIUM COPPER PER ASTM-B-196.
- MAT'L: PTFE PER ASTM-D-1710.
- FINISH: GOLD PLATE PER MIL-G-45204, TYPE 1, GRADE C, CLASS 1 OVER NICKEL .000050 [0.0013] THK PER QQ-N-290, CLASS 2.
- A .0285 [0.72] GAGE PIN MUST ENTER FOR A LENGTH OF .085 [2.16] MIN.
- .028 [0.71] GO - .030 [0.76] NO GO GAGE WILL ENTER TO A DEPTH OF SIGHT HOLE.
- 160 DP. FULL DIAMOND KNURL OVER THIS LENGTH.
- .581 [14.76] MAX AFTER TERMINATION TO CABLE.
- COLOR CODED PER MIL-C-39029, .020-.050 [0.51-1.27] WIDTH.
- MATES WITH A .113±.001 [2.87±0.03] PIN
- BAG MARKED WITH CUSTOMER P/N S280W552-101.
- BAG MARKED WITH CUSTOMER P/N S280W552-201.
- DIMENSION IS AFTER CRIMPING, PIN TO BE POSITIONED WITH  $\text{M} \pm .030 \text{ (A)} \text{ (S)}$



BUSHING	10
FERRULE	9
DIELECTRIC, OUTER, FRONT	8
DIELECTRIC	7
CONTACT, INTERMEDIATE, SIZE 8	6
SHELL, OUTER, PIN	5
CONTACT, CENTER, PIN	4
SHELL, CRIMP END	3
FERRULE	2
DIELECTRIC	1

OBSOLETE	14	TENSOLITE 24463/9P025X-2(LD) OR TENSOLITE 24463/9B017X-2(LD) (OBSOLETE)	448312-2
	13	TENSOLITE 24463/9P025X-2(LD) OR TENSOLITE 24463/9B017X-2(LD) (OBSOLETE)	448312-1
	REMARKS	CABLE REF	PART NO

THIS DRAWING IS A CONTROLLED DOCUMENT. **STE** TE Connectivity

DIMENSIONS: INCHES	TOLERANCES UNLESS OTHERWISE SPECIFIED:	DIN C.C.THOMAS 10-19-92	11-6-92
0 PLC ± -	1 PLC ± -	2 PLC ± -	3 PLC ± .005
4 PLC ± -	ANGLES ± -	APVD C.SHELLY	NAME
MATERIAL SEE CALLOUTS	FINISH SEE CALLOUTS	PRODUCT SPEC 108-12092	APPLICATION SPEC 114-12010
		WEIGHT 0.000000	SIZE A1
		CUSTOMER DRAWING	SCALE 10:1 SHEET 1 OF 1 REV G

PIN CONTACT, SIZE 8, FRONT RELEASE, CONCENTRIC TWINAX