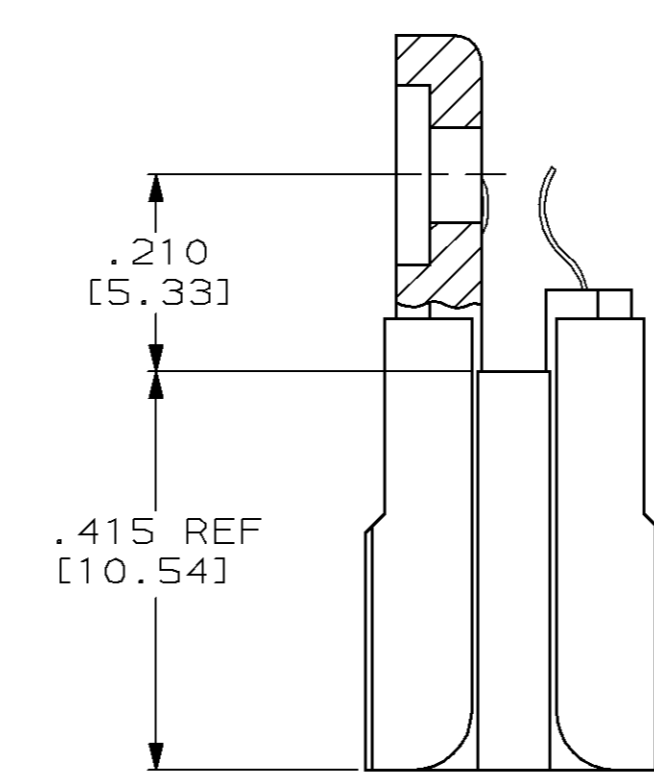
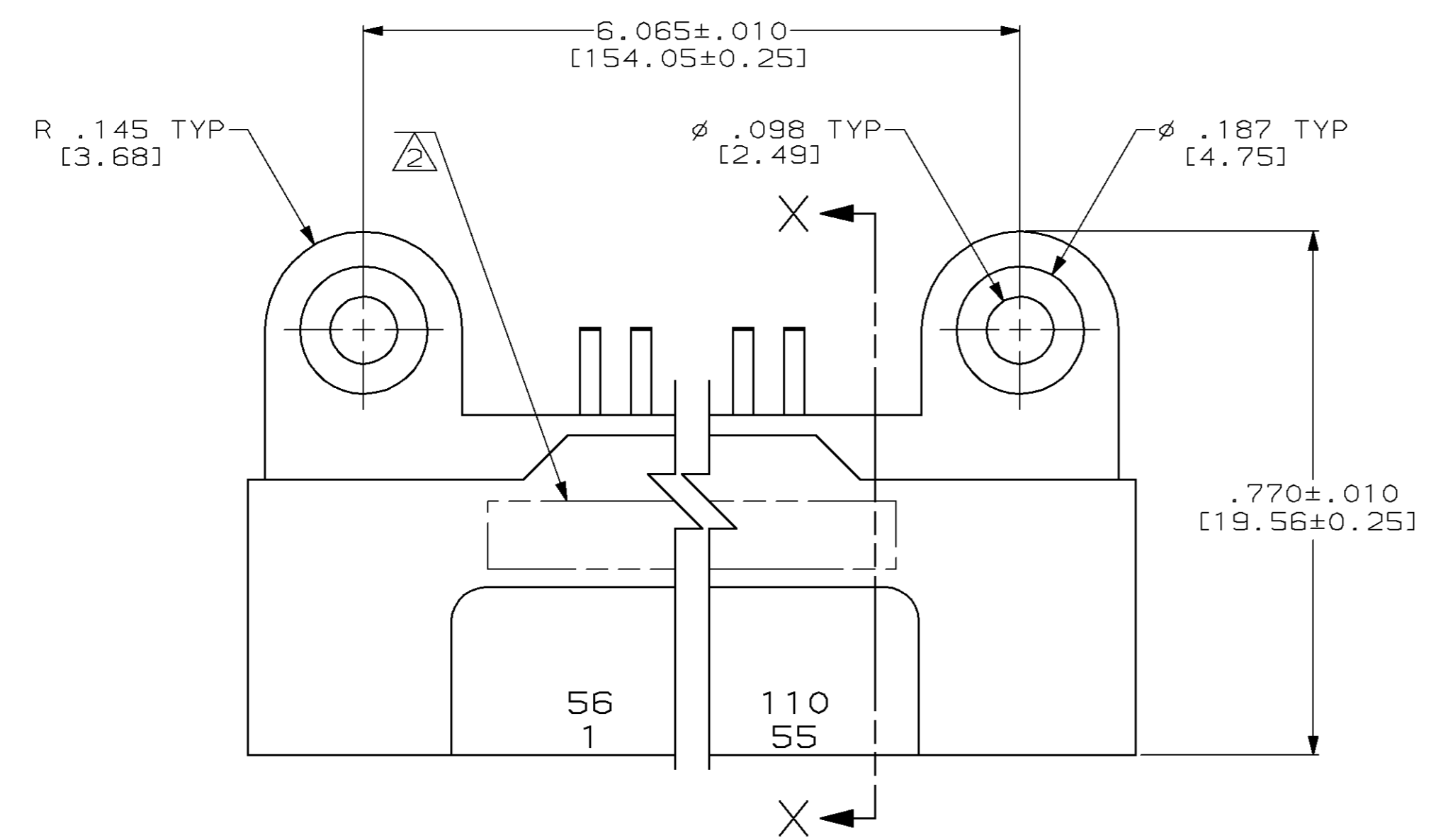
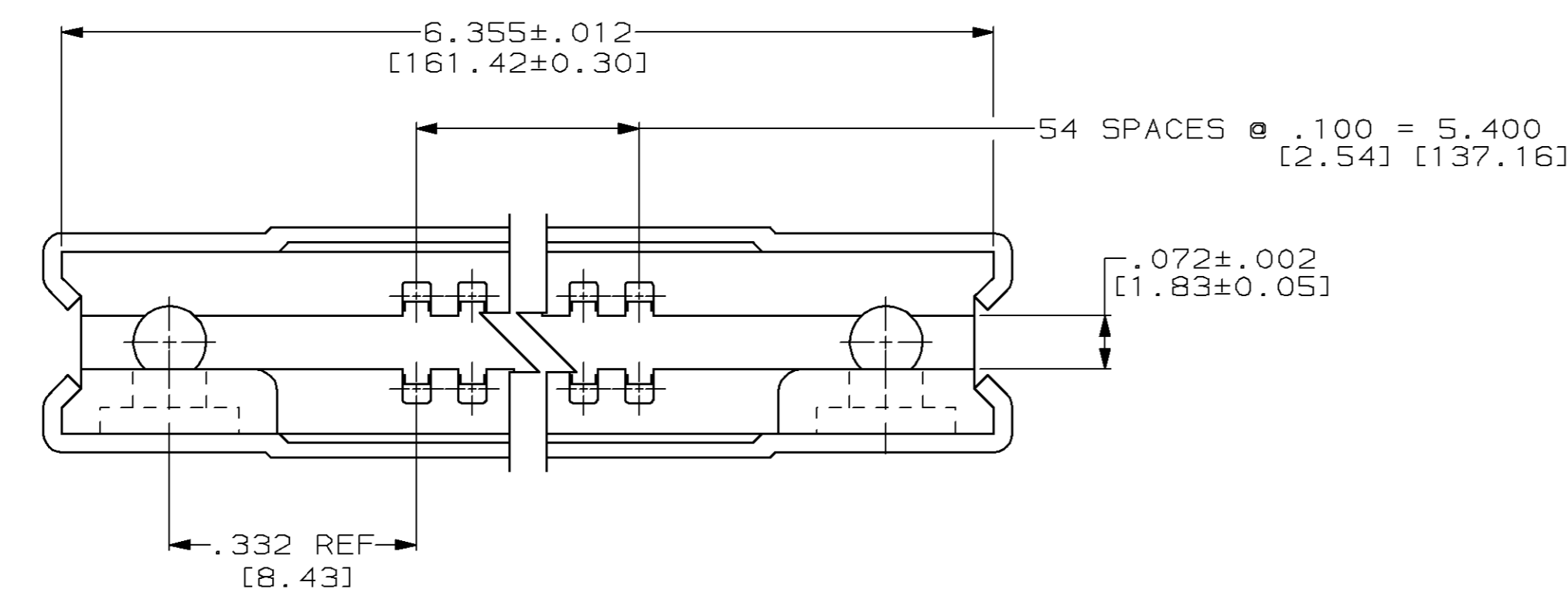
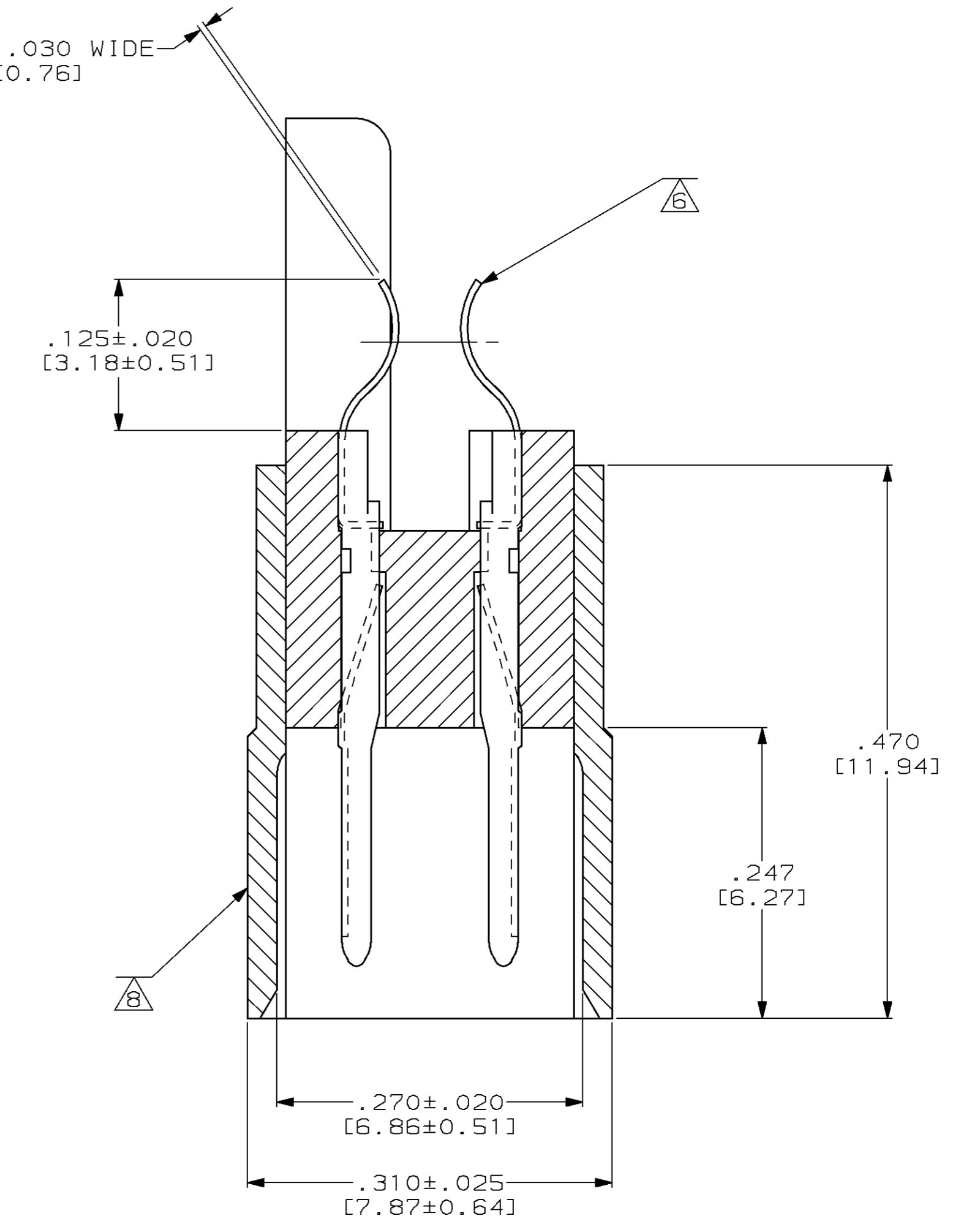


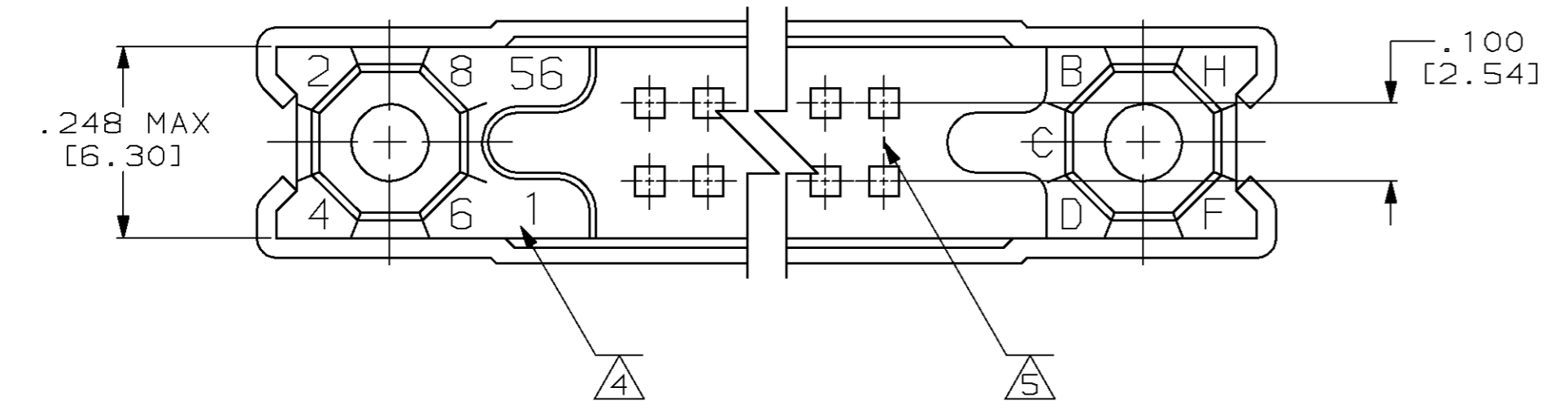
PROD		LOC	DIST	REVISIONS					
5368	DF	FO	P	F	ZONE	LTR	DESCRIPTION	DATE	APPD
					B		REV PER 0600-7169-98 JY	9-98	DG



TAB .006 THICK X .030 WIDE
 [0.14] [0.76]



SECTION X-X
 SCALE 10:1



- MUST MEET ALL REQUIREMENTS OF MIL-C-55302 AND NOTE \triangle .
- \triangle CUSTOMER PART NUMBER, 00779, AMP, DATE CODE AND AMP PART NUMBER MARKED IN THIS AREA.
- \triangle FINISH: .000050 GOLD IN CONTACT AREA, .000100 TIN-LEAD ON TAILS, OVER .000050 NICKEL, OVER ENTIRE CONTACT.
- \triangle CAVITY IDENTIFICATION NUMBERS, SEE TABLE.
- \triangle LINES INDICATING EVERY FIFTH CAVITY.
- \triangle TABS PRETINNED BY AMP FOR SOLDERING BY CUSTOMER.
- \triangle TESTING PER G.E. DRAWING 2629931.
- \triangle CAVITY IDENTIFICATION NUMBERS INDICATING EVERY 5 CAVITIES MOLDED OR MARKED ON PIN PROTECTOR SURFACE.

2629931-29	\triangle	\triangle	1, 56, 55, 110	110	449567-1
CUSTOMER PART NUMBER	TESTING	CONTACT FINISH REF	CAVITY IDENT	NUMBER OF POSITIONS	PART NUMBER
DO NOT SCALE PRINT. UNLESS SPECIFIED DIMENSIONS IN INCHES [mm] TOLERANCES ON: 2 PLC DEC ± .005 (0.13) ANGLES ±	DR 10-14-93 T. ALEXANDER CHK 11-1-93 G. GRIFFITH APPD 11-1-93 G. GRIFFITH	AMP AMP Incorporated Harrisburg, PA 17105-3608			
MATERIAL	APPD 11-2-93 T. ALEXANDER PRODUCT SPEC	NAME PIN HEADER ASSEMBLY, 1000 SERIES BOX WITH PIN PROTECTORS, WITH SPECIAL TESTING AND MARKING			
FINISH SEE TABLE	APPLICATION SPEC	SIZE D	CAGE CODE 00779	DRAWING NO 449567	
	WEIGHT	SCALE 5:1	SHEET 1 OF 1		