

4

3

2

1


THIS DRAWING IS UNPUBLISHED. RELEASED FOR PUBLICATION
© COPYRIGHT ALL RIGHTS RESERVED.

LOC		DIST		REVISIONS			
P	LTR	DESCRIPTION		DATE	DWN	APVD	
	S1	ECR-13-014358		12SEP2013	XZ	LZ	

REPLACED BY OCEAN STYLE APPLICATOR PART NUMBER 2150252-2

FOR REPLACEMENT PARTS FOR APPLICATOR 466784 REFER TO ADDITIONAL PAGE(S). SPARE PARTS KIT (IF LISTED) WILL REMAIN AVAILABLE.

THE REPLACEMENT OCEAN STYLE APPLICATOR HAS THE SAME TERMINATOR/PRESS INTERFACE AS APPLICATOR 466784

THIS DRAWING IS A CONTROLLED DOCUMENT.		DWN X. ZHAO	 TE Connectivity		
DIMENSIONS:		CHK L. ZHANG			
TOLERANCES UNLESS OTHERWISE SPECIFIED:		APVD L. ZHANG	NAME END FEED HDM APPLICATOR		
0 PLC ±		PRODUCT SPEC	APPLICATION SPEC		
1 PLC ±		APPLICATOR SPEC	SIZE A3	CAGE CODE	DRAWING NO C-466784
2 PLC ±		WEIGHT	RESTRICTED TO		
3 PLC ±		CUSTOMER DRAWING	SCALE	SHEET 1 OF 2	REV S1
4 PLC ±					
ANGLES ±					
MATERIAL					
FINISH					

D

D

C

C

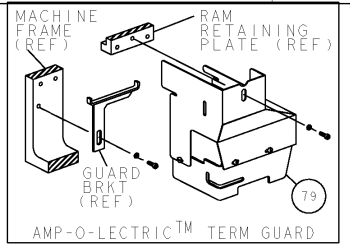
B

B

A

A

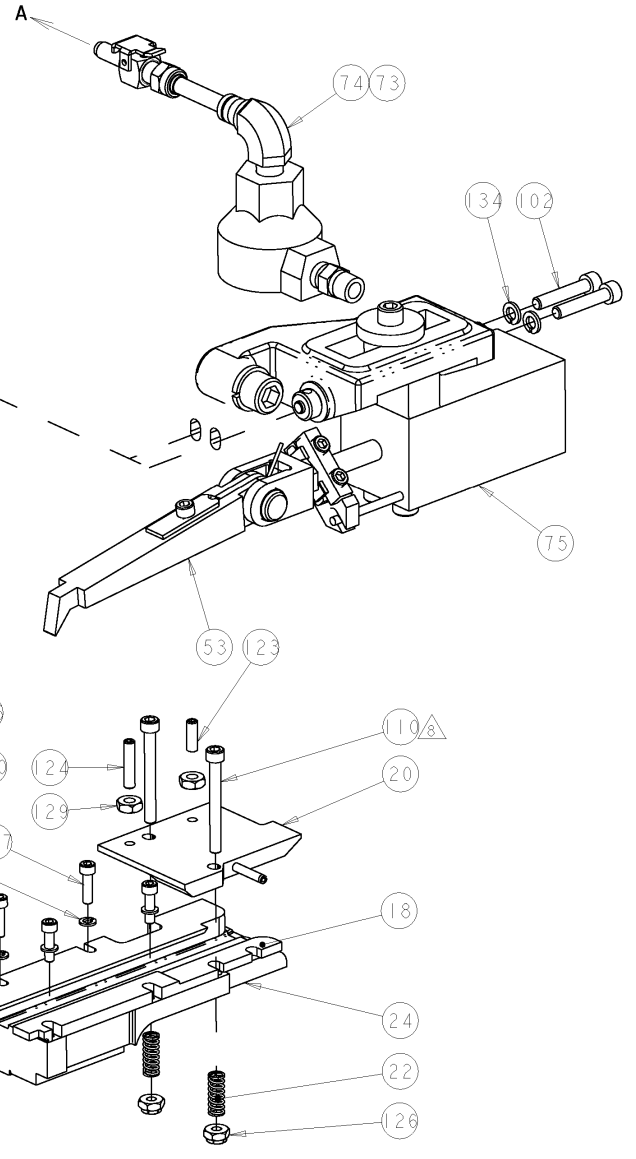
THIS DRAWING IS UNPUBLISHED. RELEASED FOR PUBLICATION 2007				
COPYRIGHT 2007 BY TYCO ELECTRONICS CORPORATION. ALL RIGHTS RESERVED.				
PART NUMBER	REV	FIRST USED	POWER UNIT	FEED TYPE
466784-1	S	-	LEADMAKER	AIRFEED
466784-2	S	-	AMP-O-LECTRIC	AIRFEED



TERMINAL NAME: ULTRA-FAST FLAG					
-	520128	AMP TERMINAL - AMP CRIMP SPECS			
-	520386				
-	521164	PAD LTR	CRIMP HEIGHT	WIRE SIZE	Ø SOLDER
-	-	A	.070±.002	18 OR (2)22	Ø.196
-	-	B	.065±.002	22 OR 20	Ø.196
-	-	C	-	-	-
-	-	D	-	-	-
-	-	CRIMP	SIZE	TYPE	RANGE
-	-	WIRE	.201	D	22-18
-	-	INSUL	-	-	.165 MAX
WIRE STRIP LENGTH	TERM APPL SPEC	FEED	APPL INSTRUCTIONS	SET UP GAGE	LAYOUT
	114-2163	.140	A1-8055	458938-2	

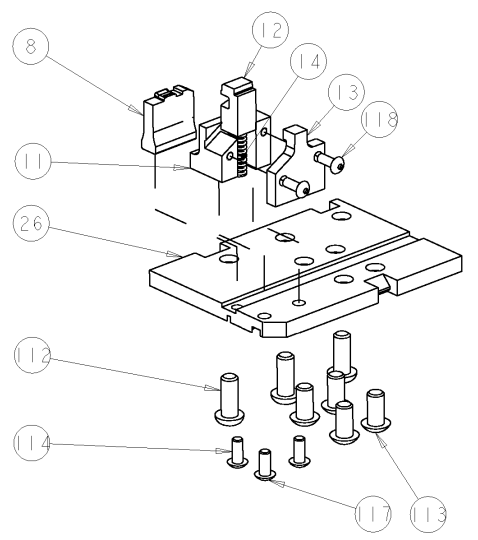
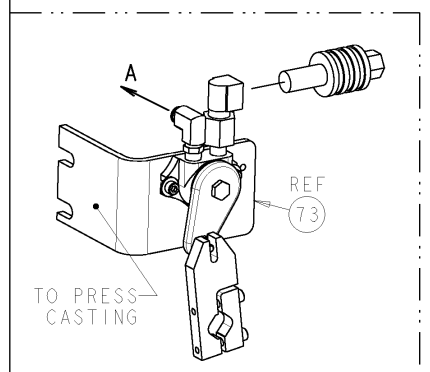
LOC	DIST	REVISIONS			
A	66	REV	DESCRIPTION	DATE	APPV
		S	ECR-07-003348	12FEB2007	DW TM

1. ONLY THE ITEMS WITH QUANTITIES SPECIFIED ON PARTS LIST ARE USED ON THIS APPLICATOR.
 2. GUARD MUST BE IN PLACE WHEN OPERATING APPLICATOR IN AMP-O-LECTRIC PRESS.
 3. RECOMMENDED SPARE PARTS.
 4. LUBRICATE DAILY USING NO. 20 MACHINE OIL.
 5. GREASE LIGHTLY.
 6. TO CHECK CRIMP HEIGHT, CRIMP SOLDER (3/16 DIA 60/40 SOLID CORE) AND MEASURE AT CENTER OF SLUG.
-
7. ITEMS WITH A QTY OF REF SPECIFIED ARE USED ON ITEM 48.
 8. CUT TO LENGTH AT ASSEMBLY.
 9. SPARE TOOLING KIT (7-466784-7)



2	2	-	21024-5	WASHER, SPRG LOCK, REG NO 10	134
1	1	-	21024-4	WASHER, SPRG LOCK, REG NO 8	133
4	4	-	21024-3	WASHER, SPRG LOCK, REG NO 6	132
2	2	-	21018-6	NUT, HEX, REG 8-32	129

2	2	-	21022-2	NUT, HEX, SELF-LOCKING, THIN, 8-32	126
1	1	-	4-21010-6	SET SCREW, SOCKET HD, FLAT POINT	124
1	1	-	21078-8	SET SCREW, SOCKET HD, OVAL POINT	123
1	1	-	21009-2	SCR, SET, SELF LOCKING 1/4-20 X .250	122
2	2	-	21017-1	SCREW, DRIVE	120
1	1	-	461264-1	PLATE, IDENTIFICATION	119
2	2	-	1-21002-7	SCR, BTN SKT HD CAP 6-32 X .375	118
2	2	-	2-21002-1	SCR, BTN SKT HD CAP 8-32 X .375	117
2	2	-	2-21002-2	SCR, BTN SKT HD CAP 8-32 X .500	116
REF	REF	-	2-21002-9	SCR, BTN SKT HD CAP 10-32 X .750	115
1	1	-	22733-8	SCR, BHSC, SELF-LOCKING, 8-32 X .375	114
4	4	-	3-21002-3	SCR, BTN SKT HD CAP 1/4-20 X .500	113
REF	REF	-	17177-1	SCR, BTN HD SKT CAP (1/4-20x.62)	112
2	2	-	3-21000-3	SCR, SKT HD CAP 8-32 X 1.500	110
1	1	-	23030-1	SCR, SKT HD CAP, S-LOCK, 6-32 X .25	109
4	4	-	2-21000-0	SCR, SKT HD CAP 6-32 X .500	107
1	1	-	2-21000-7	SCR, SKT HD CAP 8-32 X .500	106
2	2	-	3-21000-9	SCR, SKT HD CAP 10-32 X 1.000	102
1	REF	-	455750-7	GUARD ASSEMBLY	79
1	1	-	460277-3	AIR FEED ASSY	75
-	1	-	692655-7	AIR FEED VALVE ASSEMBLY	74
1	-	-	692655-5	AIR FEED VALVE ASSEMBLY	73
1	1	-	690603-1	SPRING ASSIST AMP-O-MATOR APPLICATOR	72
REF	REF	-	467284-1	CAP, RAM	59
REF	REF	-	683742-1	HOUSING, APPLICATOR	58
1	1	-	1-460680-2	FEED FINGER ASSEMBLY	53
1	1	-	690686-2	CRIMPER, BOLT SPECIAL	49
1	1	-	816186-1	APPLICATOR, BASIC SUB-ASSY	48
1	1	-	22480-5	WASHER, WAVE SPRING	46
1	1	-	690191-1	PLUG, NYLON	45
1	1	-	683741-1	RAM	44
1	1	-	690125-1	SHIM SUB-ASSY	43
1	1	-	690124-1	WASHER, RAM (.115)	42
1	1	-	690124-5	WASHER, RAM (.062)	41
1	1	-	23241-6	BALL, STEEL	40
1	1	-	690170-1	SPRING, COMPRESSION	39
1	1	-	462426-1	DISC, SPRING	38
1	1	-	462425-1	WIRE DISC	37
2	2	-	5-22278-1	SPRING, COMPRESSION	36
1	1	-	690212-1	POST, RAM	35
8	8	-	2-22280-5	SPRING, COMPRESSION	34
1	1	-	690455-3	STRIPPER, FRONT CASTING	27
REF	REF	-	467286-2	PLATE, BASE	26
1	1	-	467285-1	PLATE, GUIDE, STRIP	24
2	2	-	2-22280-9	SPRING, COMPRESSION	22
1	1	-	467283-1	DRAG	20
1	1	-	683736-1	GUIDE, STRIP, REAR	19
1	1	-	683737-1	FRONT STRIP GUIDE	18
1	1	-	4-22280-7	SPRING, COMPRESSION	14
1	1	-	467281-1	RETAINER, SHEAR, FLOATING	13
1	1	-	467500-1	SHEAR, FLOATING	12
1	1	-	467501-1	HOLDER, SHEAR, FLOATING	11
1	1	-	467341-1	ANVIL, RIGHT HAND	8
1	1	-	467499-2	SHEAR DEPRESSOR	6
1	1	-	238009-1	BLOCK, FL CRIMPER SPACER	4
1	1	-	467282-1	STABILIZER	3
1	1	-	462842-1	SPACER	2
1	1	-	467342-1	CRIMPER, RIGHT HAND	1
-2	-1	U/M	PART NO	DESCRIPTION	ITEM NO



DIMENSIONS:		TOLERANCES UNLESS OTHERWISE SPECIFIED:		DRAWN: B. WEAVER 31 JAN 2007		TYCO ELECTRONICS	
IN		10 PLC ±.005		CHK: ELBIN 31 JAN 2007		Tyco Electronics	
Ø		2 PLC ±.005		APPV: T. ELBIN 31 JAN 2007		Harrisburg, PA 17105-3608	
MATERIAL:		FINISH:		PRODUCT SPEC:		NAME: END FEED HDM APPLICATOR	
				APPLICATION SPEC:		SIZE: CARE CODE: DRAWING NO: A100779 C=466784	
				WEIGHT:		RESTRICTED TO:	
				CUSTOMER DRAWING:		SCALE: 3:4 SHEET 1 OF 1 REV S	

CUSTOMER VIEWABLE ASSEMBLY