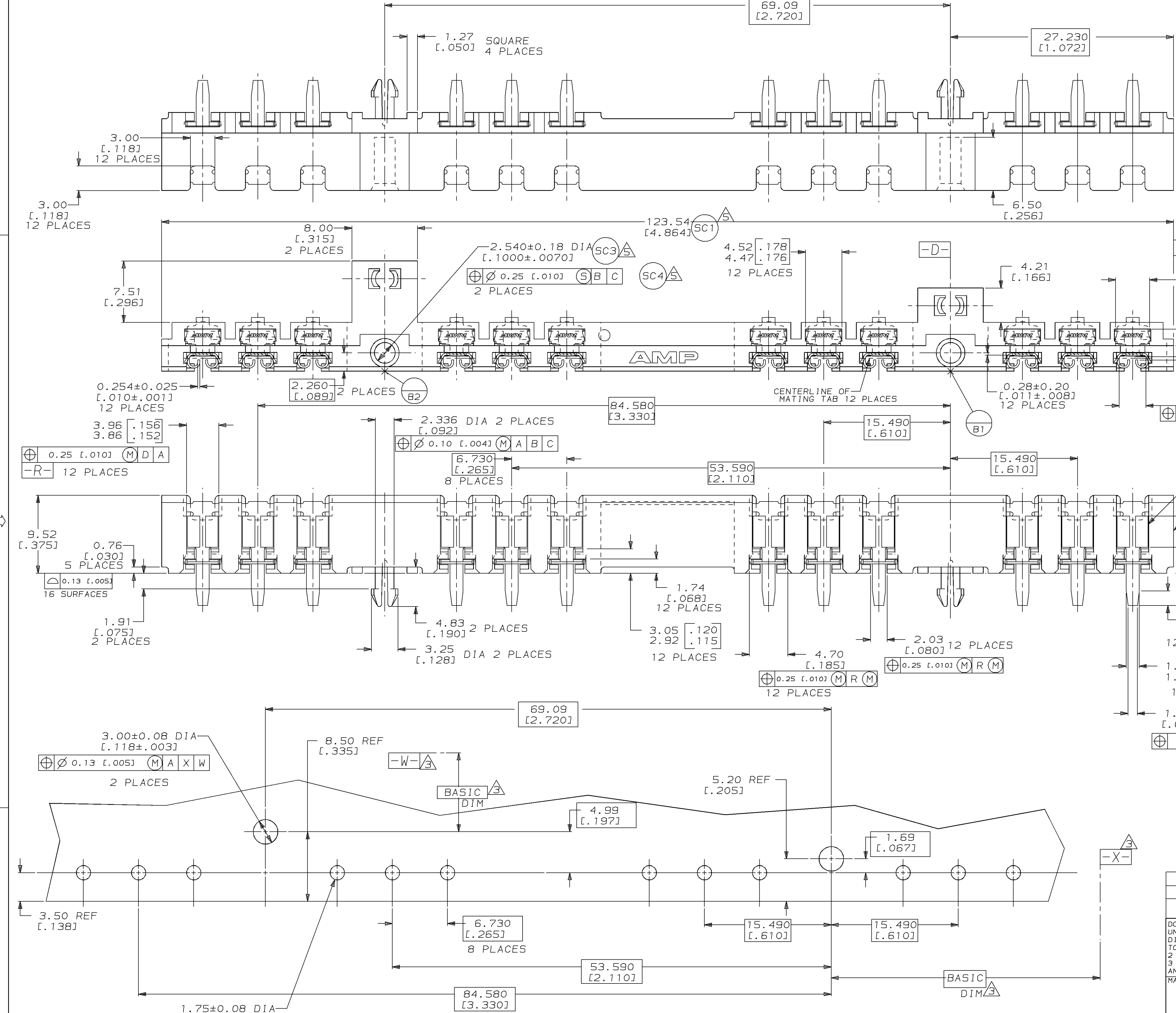
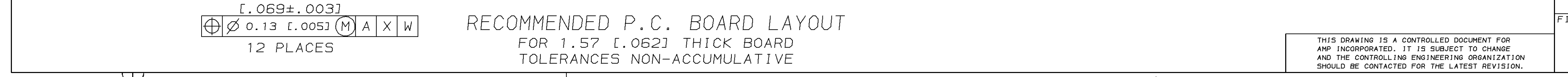
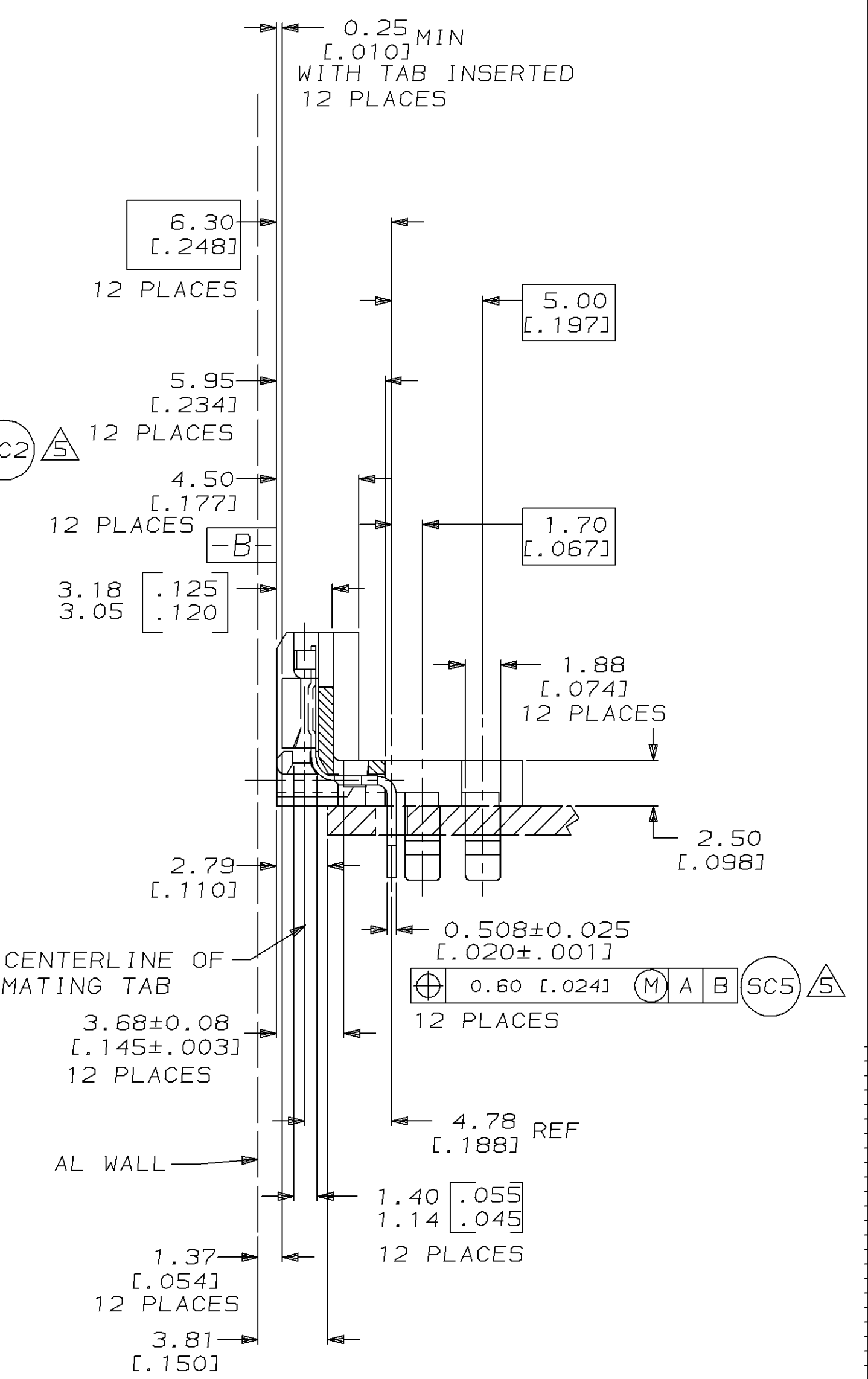


LOC	DIST	P	F	ZONE	LTR	REVISIONS	DATE	APPD
AF	50				J	REVISED PER 0710-0491-95	02NOV95	RG/NN



- 1 0.00508 [.00200] MIN TIN IN FUNCTIONAL PLATE AREA, 0.00254 [.00100] MIN TIN ON REMAINDER, OVER 0.00254 [.000100] MIN COPPER UNDERPLATE.
- 2 PRODUCT COMPLIES WITH AMP SOLDERABILITY SPEC 109-11-5 WHEN PLATED AND 109-11-1 AFTER TWO YEARS OF SHELF LIFE.
- 3 DATUMS AND BASIC DIMENSIONS TO BE DETERMINED BY CUSTOMER.
- 4 FITS A 0.508±0.025 [.020±.001] THICK TAB. 12 PLACES
- 5 CUSTOMER SIGNIFICANT CHARACTERISTIC.



1	HO4 PRE-MILLED BRASS	12	TAB RECEPTACLE	2	521018-1
BLACK	LIQUID CRYSTAL POLYMER	1	HEADER HOUSING	1	PART NO
FINISH	MATERIAL	QUANTITY	DESCRIPTION	ITEM NO	
DO NOT SCALE PRINT. UNLESS SPECIFIED DIMENSIONS IN mm [INCHES] TOLERANCES ON:					
2 [3] PLC DEC ± 0.25 [0.010]					
3 [3] PLC DEC ± 0.10 [0.004] ANGLES ± -					
MATERIAL	SEE TABLE	PRODUCT SPEC	AMP Incorporated Harrisburg, PA 17105-3608		
NAME ASSEMBLY, HEADER, RECEPTACLE, TAB, 2.79 [.110], P.C. BOARD, 12 POSITION, MAG-MATE™					
FINISH	SEE TABLE	APPLICATION SPEC	SIZE D	CAGE CODE 00779	DRAWING NO C-521018
WEIGHT			SCALE 4:1	SHEET 1 OF 1	

THIS DRAWING IS A CONTROLLED DOCUMENT FOR AMP INCORPORATED. IT IS SUBJECT TO CHANGE AND THE CONTROLLING ENGINEERING ORGANIZATION SHOULD BE CONTACTED FOR THE LATEST REVISION.