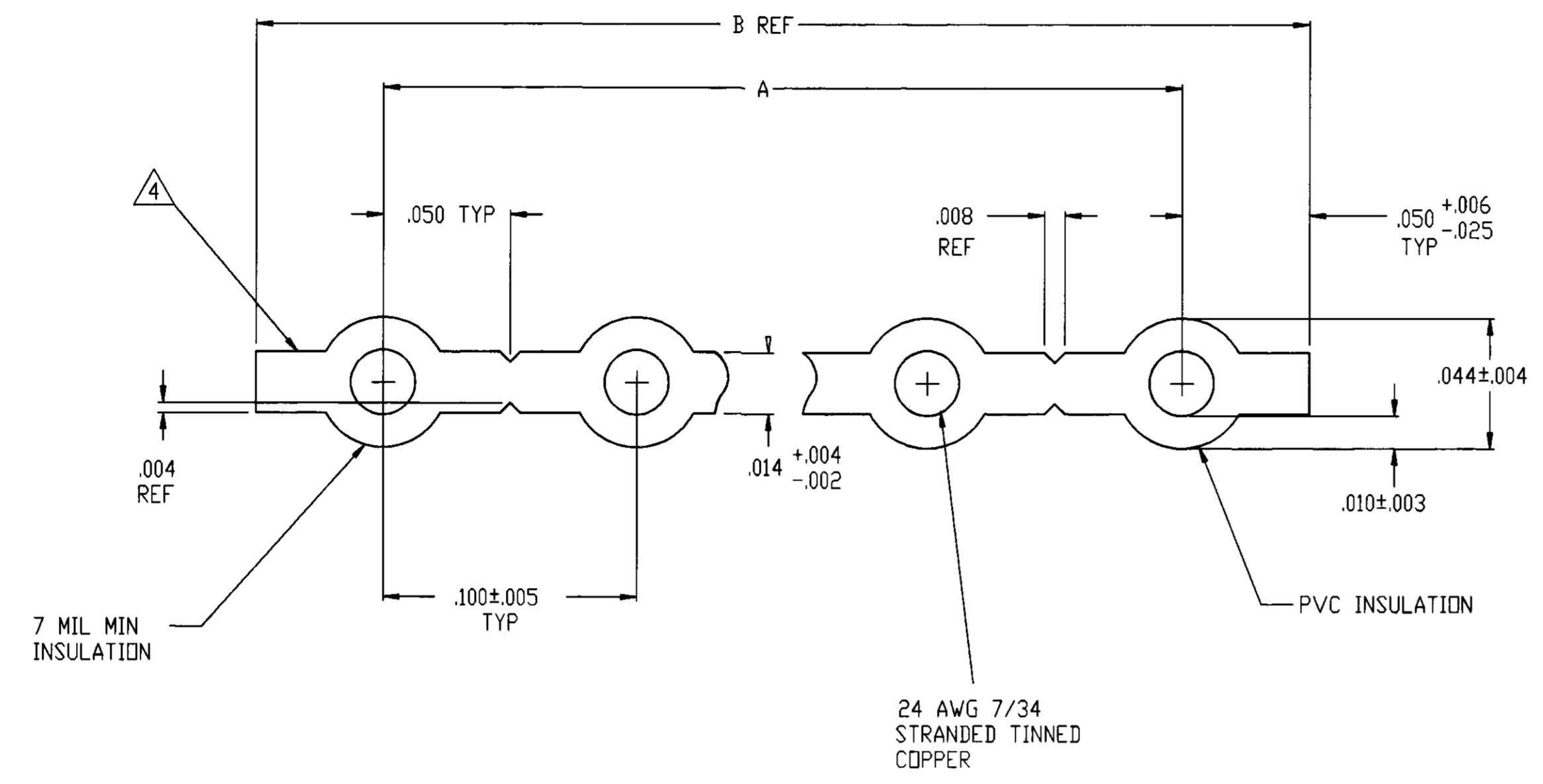


REVISONS		DATE	BY	APP'D
0	ORIGINAL DRAWING	04DEC95	MKB	RS
A	RELEASE PER NPR PD 96-0054	20AUG96	LMH	RS
A1	REVISED PER ECO-09-022178	21SEP09	KK	AEG



- CABLE CERTIFIED TO: -UL CABLE STYLE: 2651
CSA: CSA AWM IA 105°C 300V FT1
 - CABLE PHYSICAL SPECIFICATIONS:
 - TEMPERATURE RATING: -20°C TO +105°C
 - FLAMMABILITY: -UL: VWI
 - INSULATION: GRAY FLAME RETARDANT FLEXIBLE PVC
 - CONDUCTORS: 24 AWG 7/34 STRANDED TINNED COPPER
 - ELECTRICAL REQUIREMENTS:
 - VOLTAGE: 300 VOLTS
- △4 EDGE MARK ON CONDUCTOR #1
- △5 LENGTH PER REEL: 250 FT. REEL MAY CONTAIN SEPARATE LENGTHS. 20 FT. MIN PER LENGTH. TWO LENGTHS MAX PER REEL.
- △6 LENGTH PER REEL: 100 FT. REEL MAY CONTAIN SEPARATE LENGTHS. 20 FT. MIN PER LENGTH. TWO LENGTHS MAX PER REEL.
7. CABLE SURFACE PRINTED PER UL & CSA REQUIREMENTS.
- △8 OBSOLETE PARTS: OBSOLETE CIS STREAMLINING PER D.RENAUD/D.SINISI

REEL LENGTH	B REF	A	NO. OF CNDTS	PART NUMBER
2.800	2.700±.010	28	5-57746-8	
2.700	2.600±.010	27	5-57746-7	
2.600	2.500±.010	26	5-57746-6	
2.500	2.400±.010	25	5-57746-5	
2.400	2.300±.010	24	5-57746-4	
2.300	2.200±.010	23	5-57746-3	
2.200	2.100±.010	22	5-57746-2	
2.100	2.000±.009	21	5-57746-1	
2.000	1.900±.009	20	5-57746-0	
1.900	1.800±.009	19	4-57746-9	
1.800	1.700±.009	18	4-57746-8	
1.700	1.600±.009	17	4-57746-7	
1.600	1.500±.008	16	4-57746-6	
1.500	1.400±.008	15	4-57746-5	
1.400	1.300±.008	14	4-57746-4	
1.300	1.200±.008	13	4-57746-3	
1.200	1.100±.008	12	4-57746-2	
1.100	1.000±.007	11	4-57746-1	
1.000	.900±.007	10	4-57746-0	
.900	.800±.007	9	3-57746-9	
.800	.700±.007	8	3-57746-8	
.700	.600±.007	7	3-57746-7	
.600	.500±.006	6	3-57746-6	
.500	.400±.006	5	3-57746-5	
.400	.300±.005	4	3-57746-4	
.300	.200±.005	3	3-57746-3	
.200	.100±.005	2	3-57746-2	
2.800	2.700±.010	28	2-57746-8	
2.700	2.600±.010	27	2-57746-7	
2.600	2.500±.010	26	2-57746-6	
2.500	2.400±.010	25	2-57746-5	
2.400	2.300±.010	24	2-57746-4	
2.300	2.200±.010	23	2-57746-3	
2.200	2.100±.010	22	2-57746-2	
2.100	2.000±.009	21	2-57746-1	
2.000	1.900±.009	20	2-57746-0	
1.900	1.800±.009	19	1-57746-9	
1.800	1.700±.009	18	1-57746-8	
1.700	1.600±.009	17	1-57746-7	
1.600	1.500±.008	16	1-57746-6	
1.500	1.400±.008	15	1-57746-5	
1.400	1.300±.008	14	1-57746-4	
1.300	1.200±.008	13	1-57746-3	
1.200	1.100±.008	12	1-57746-2	
1.100	1.000±.007	11	1-57746-1	
1.000	.900±.007	10	1-57746-0	
.900	.800±.007	9	57746-9	
.800	.700±.007	8	57746-8	
.700	.600±.007	7	57746-7	
.600	.500±.006	6	57746-6	
.500	.400±.006	5	57746-5	
.400	.300±.005	4	57746-4	
.300	.200±.005	3	57746-3	
.200	.100±.005	2	57746-2	

AMP Incorporated
Harrisburg, PA 17105-3608

**CABLE, MULT CONDUCTOR,
100 CL, 24 AWG**

AMP M. BOLES 04DEC95
R. SPEER 04DEC95
M. RUBERA 04DEC95

SIZE: A1 CAGE CODE: 00779 DRAWING NO: 57746
SCALE: 20:1 SHEET 1 OF 1 REV: A1