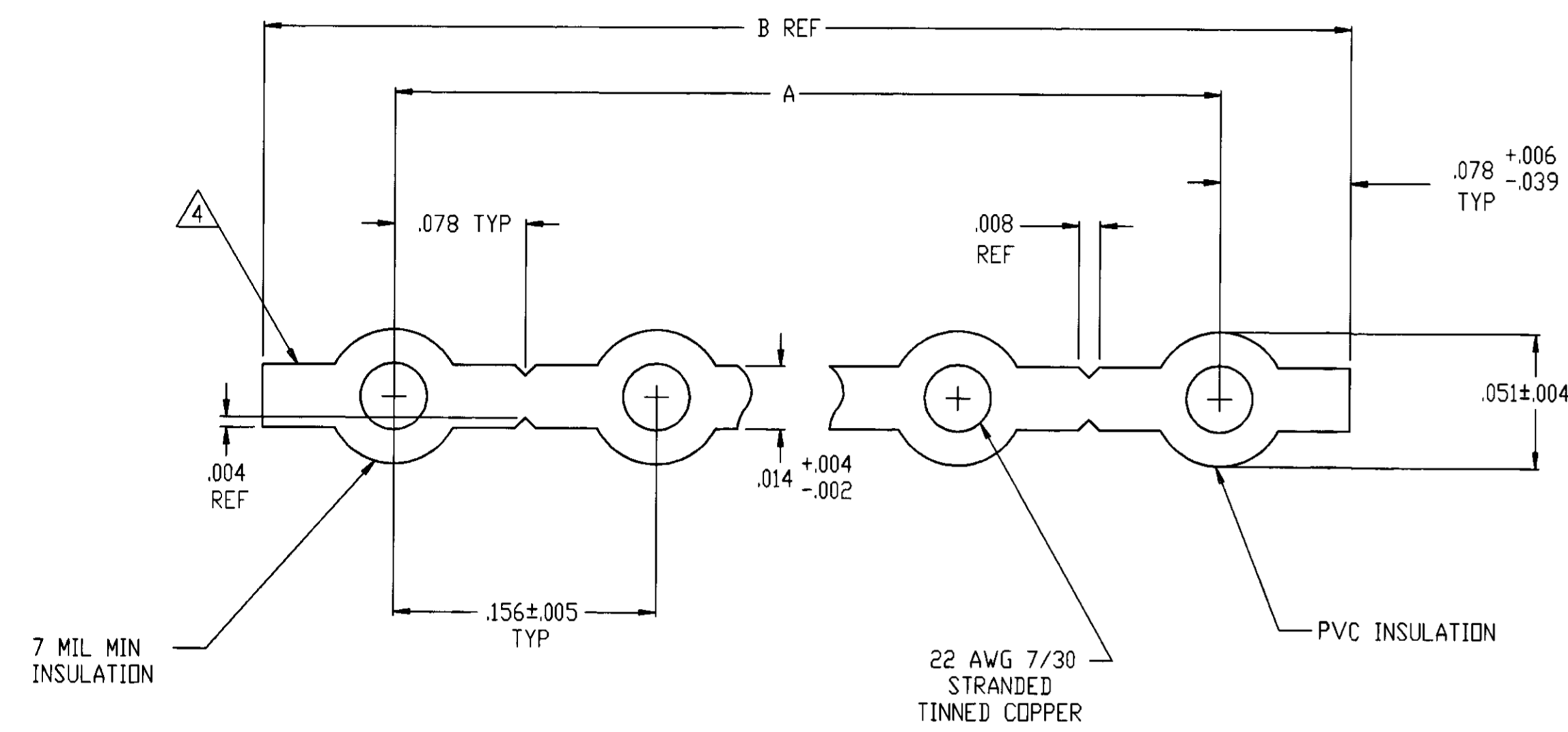


REVISONS		DATE	BY	APP'D
0	RELEASE PER NPR PD 96-0054	06AUG96	LMH	RSZ
01	REVISED PER ECO-09-022178	21SEP09	KK	AEG

- CABLE CERTIFIED TO: -UL CABLE STYLE: 2651
CSA: CSA AWM IA 105°C 300V FT1
- CABLE PHYSICAL SPECIFICATIONS:
 - TEMPERATURE RATING: -20°C TO +105°C
 - FLAMMABILITY: -UL: VWI
 - UNSATURATION: GRAY FLAME RETARDANT FLEXIBLE PVC
 - CONDUCTORS: 22 AWG 7/30 STRANDED TINNED COPPER
- ELECTRICAL REQUIREMENTS:
 - VOLTAGE: 300 VOLTS
- EDGE MARK ON CONDUCTOR #1
- LENGTH PER REEL: 250 FT. REEL MAY CONTAIN SEPARATE LENGTHS. 20 FT. MIN PER LENGTH. TWO LENGTHS MAX PER REEL.
- LENGTH PER REEL: 100 FT. REEL MAY CONTAIN SEPARATE LENGTHS. 20 FT. MIN PER LENGTH. TWO LENGTHS MAX PER REEL.
- CABLE SURFACE PRINTED PER UL & CSA REQUIREMENTS.
- OBSOLETE PARTS: OBSOLETE CIS STREAMLINING PER D.RENAUD/D.SINISI



REEL LENGTH	B REF	A	NO. OF CNDTS	PART NUMBER
3.744	3.588±.014	24	5-57750-4	
3.588	3.432±.014	23	5-57750-3	
3.432	3.276±.014	22	5-57750-2	
3.276	3.120±.014	21	5-57750-1	
3.120	2.964±.013	20	5-57750-0	
2.964	2.808±.013	19	4-57750-9	
2.808	2.652±.013	18	4-57750-8	
2.652	2.496±.013	17	4-57750-7	
2.496	2.340±.012	16	4-57750-6	
2.340	2.184±.012	15	4-57750-5	
2.184	2.028±.012	14	4-57750-4	
2.028	1.872±.011	13	4-57750-3	
1.872	1.716±.011	12	4-57750-2	
1.716	1.560±.011	11	4-57750-1	
1.560	1.404±.010	10	4-57750-0	
1.404	1.248±.010	9	3-57750-9	
1.248	1.092±.009	8	3-57750-8	
1.092	.936±.009	7	3-57750-7	
.936	.780±.008	6	3-57750-6	
.780	.624±.007	5	3-57750-5	
.624	.468±.006	4	3-57750-4	
.468	.312±.005	3	3-57750-3	
.312	.156±.005	2	3-57750-2	
3.744	3.588±.014	24	2-57750-4	
3.588	3.432±.014	23	2-57750-3	
3.432	3.276±.014	22	2-57750-2	
3.276	3.120±.014	21	2-57750-1	
3.120	2.964±.013	20	2-57750-0	
2.964	2.808±.013	19	1-57750-9	
2.808	2.652±.013	18	1-57750-8	
2.652	2.496±.013	17	1-57750-7	
2.496	2.340±.012	16	1-57750-6	
2.340	2.184±.012	15	1-57750-5	
2.184	2.028±.012	14	1-57750-4	
2.028	1.872±.011	13	1-57750-3	
1.872	1.716±.011	12	1-57750-2	
1.716	1.560±.011	11	1-57750-1	
1.560	1.404±.010	10	1-57750-0	
1.404	1.248±.010	9	57750-9	
1.248	1.092±.009	8	57750-8	
1.092	.936±.009	7	57750-7	
.936	.780±.008	6	57750-6	
.780	.624±.007	5	57750-5	
.624	.468±.006	4	57750-4	
.468	.312±.005	3	57750-3	
.312	.156±.005	2	57750-2	

DIMENSIONS: INCHES
 TOLERANCES UNLESS OTHERWISE SPECIFIED:
 1. PLC DEC ±.1
 2. PLC DEC ±.02
 3. PLC DEC ±.005
 4. PLC DEC ±.0005
 ANGLES ±

DATE: 06AUG96
 BY: L.HALL
 CHK: R.SPEER
 APP'D: C.BROOME
 PRODUCT SPEC: -
 APPLICATION SPEC: -
 METRY: -
 CUSTOMER DRAWING: -

AMP AMP Incorporated
 Harrisburg, PA 17105-3608

CABLE, MULTIPLE CONDUCTOR, .156CL, 22 AWG

SIZE: A1 CAGE CODE: 00779 DRAWING NO: 57750
 SCALE: 20:1 SHEET: 1 OF 1 REV: 01