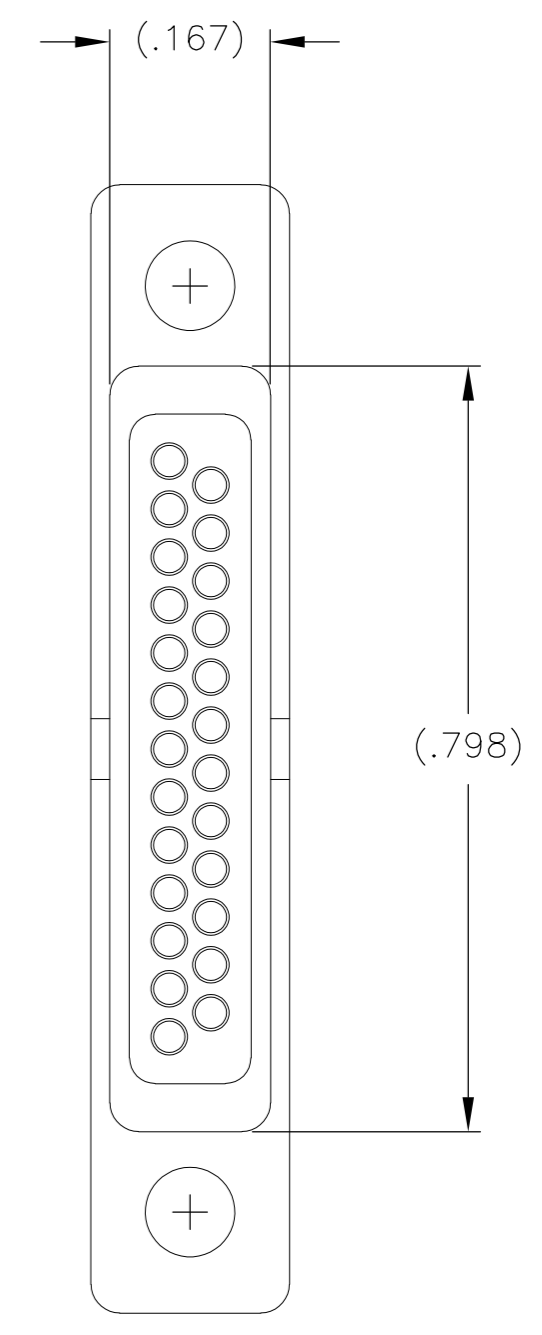
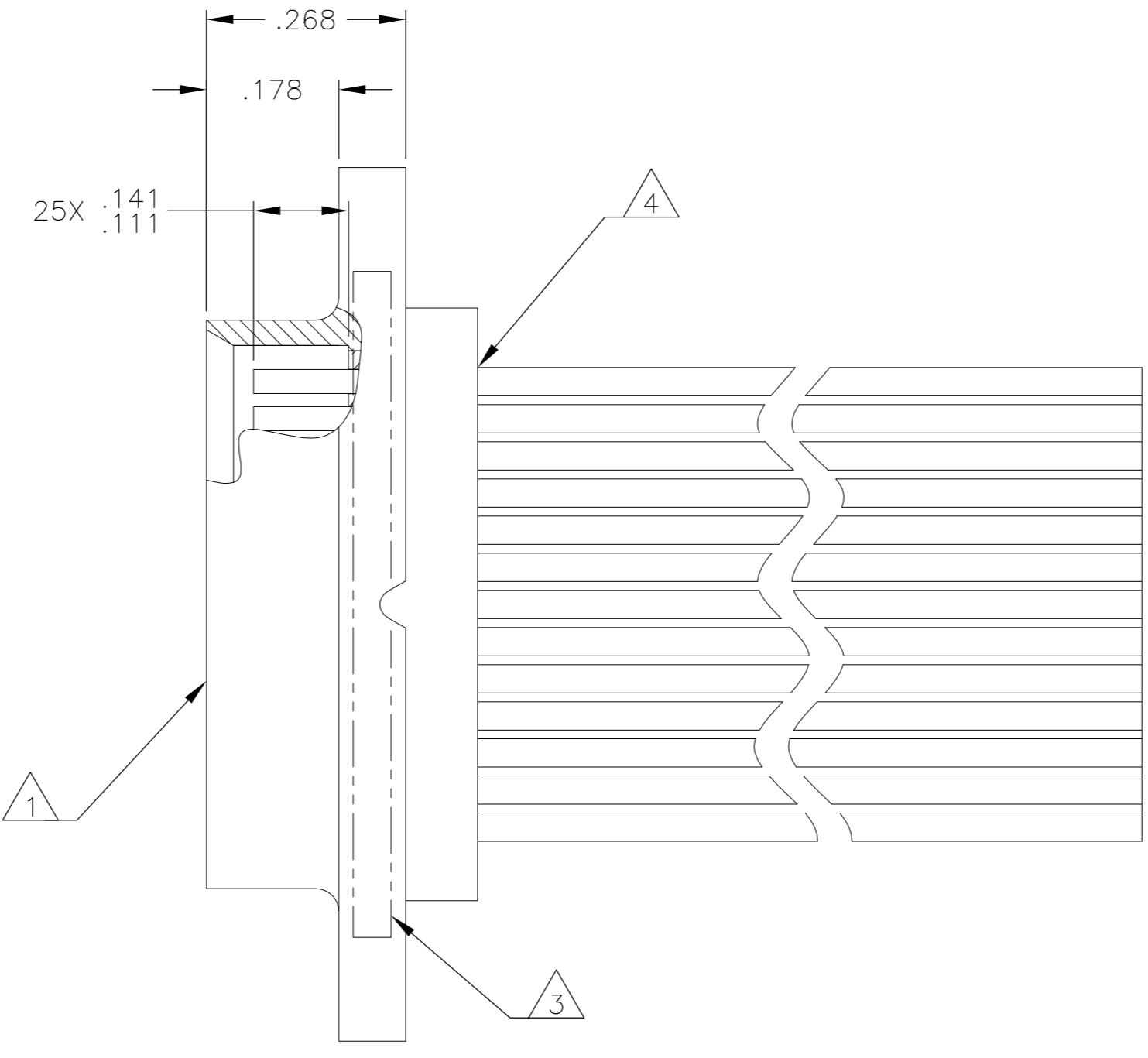
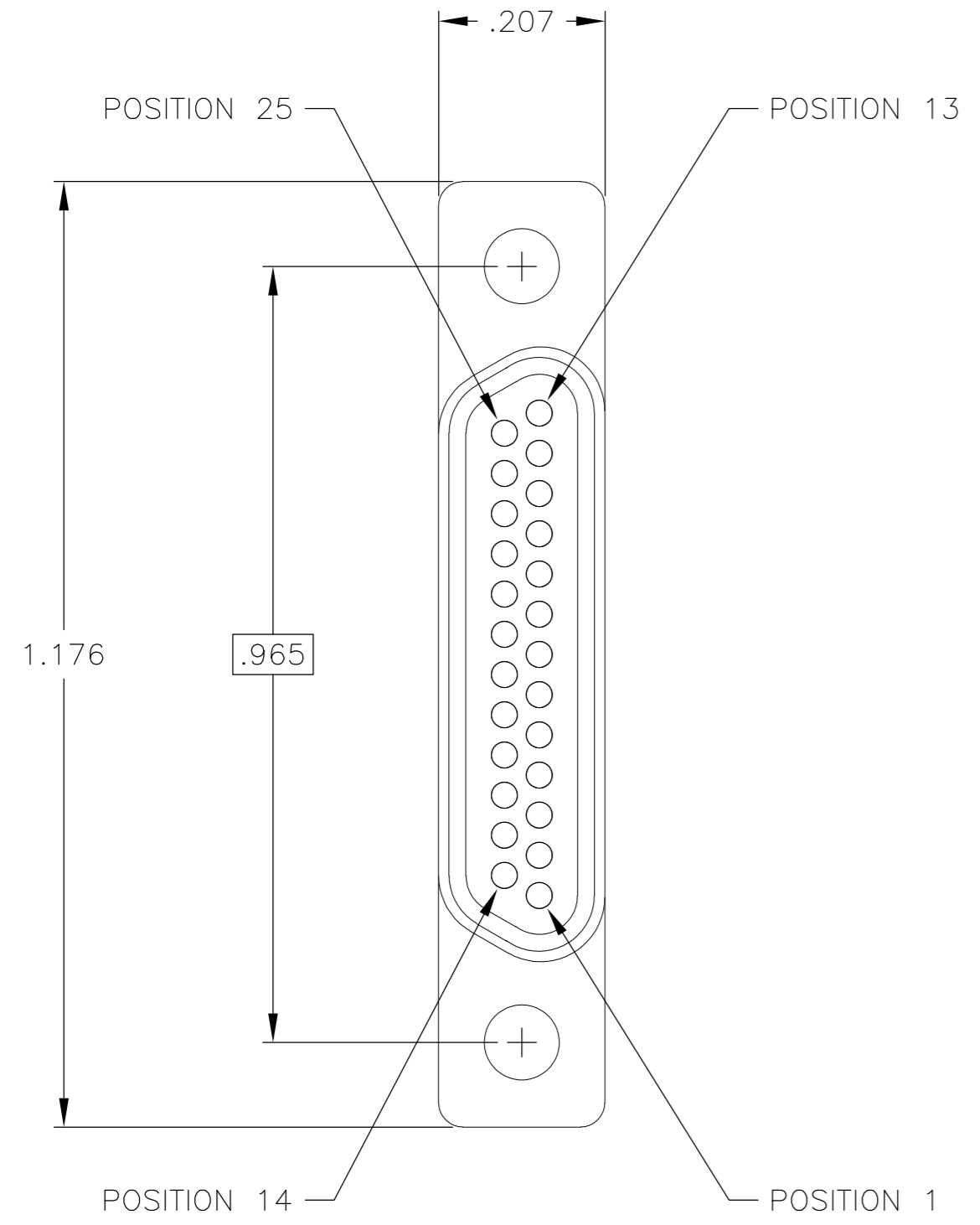
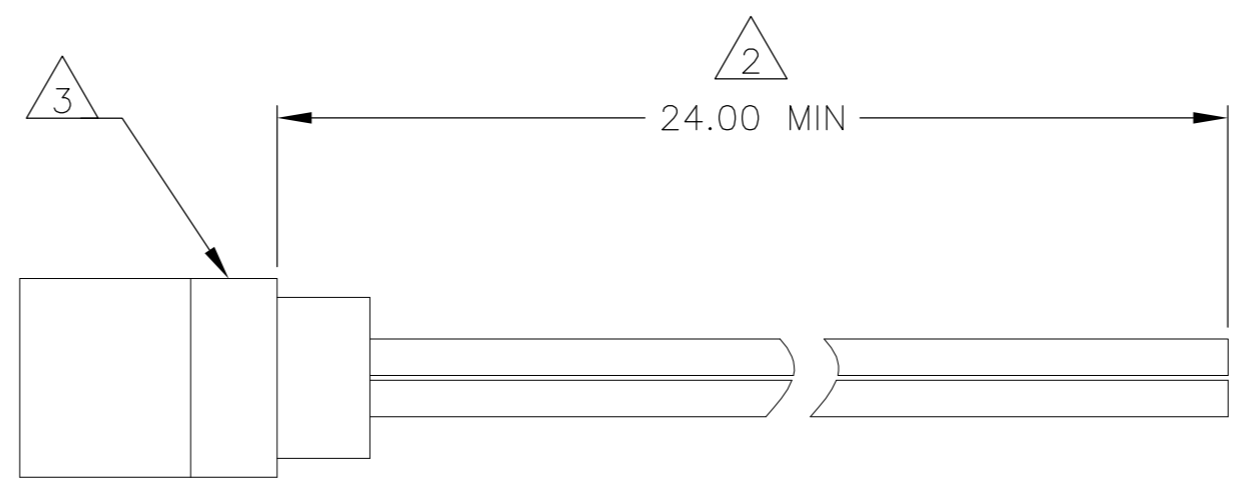


THIS DRAWING IS UNPUBLISHED. RELEASED FOR PUBLICATION
 © COPYRIGHT - By - ALL RIGHTS RESERVED.

| LOC | | DIST | | REVISIONS | | | |
|-----|-----|--------------------------|--|-----------|-----|------|--|
| P | LTR | DESCRIPTION | | DATE | DWN | APVD | |
| | A | UPDATE PER ECO-13-017026 | | 30 OCT 13 | CAS | CAS | |



- 1 SHELL MATERIAL: 6061-T6 ALUMINUM, PLATE PER ELECTROLESS NICKEL PER SAE-AMS-C-26074 OR SAE-AMS-2404
INSULATOR MATERIAL: DIALLY PHTHALATE
- 2 THIS CONFIGURATION TO USE (SAE-AS22759/11) 26AWG, 19/38 STRANDED, WHITE WIRE
- 3 MARK CONNECTOR PER MEP203-12, CODES B, C, D AND E
- 4 EPOXY WICKING FROM THE REAR OF THE INSULATOR ON INSULATED LEADS MUST NOT EXCEED .125 MAX

| | | | | |
|---|--|-------------------------------|---|---------------------------|
| THIS DRAWING IS A CONTROLLED DOCUMENT. | | DWN C SCHOLL 29 OCT 13 | | |
| DIMENSIONS: INCHES | | CHK - | | |
| TOLERANCES UNLESS OTHERWISE SPECIFIED: | | APVD C SCHOLL 29 OCT 13 | NAME FLYING LEAD ASSEMBLY, 25 POSITION RECEPTACLE. | |
| 0 PLC ± - 1 PLC ± - 2 PLC ± .01 3 PLC ± .005 4 PLC ± - ANGLES ± 2° | | PRODUCT SPEC - | MCDM1-B-25S6G2-24.0 MDC P/N 095-0486-1013 | |
| MATERIAL SEE NOTES | | APPLICATION SPEC - | SIZE A2 | RESTRICTED TO - |
| FINISH SEE NOTES | | WEIGHT - | CAGE CODE 98278 | DRAWING NO 6-1532247-7 |
| | | CUSTOMER DRAWING | SCALE 5:1 | SHEET 1 of 1 |
| | | | REV A1 | |