

THIS DRAWING IS UNPUBLISHED.

RELEASED FOR PUBLICATION

20

© COPYRIGHT 20 BY -

ALL RIGHTS RESERVED.

REVISIONS

P	LTR	DESCRIPTION	DATE	DWN	APVD
	F1	LC20-0083-16 / ECO-16-011577	20JUL2016	JG	BJ
	F2	ECN-23-242614	07DEC2023	JK	GP
	G	ECN-24-271580	19JUN2024	JK	GP

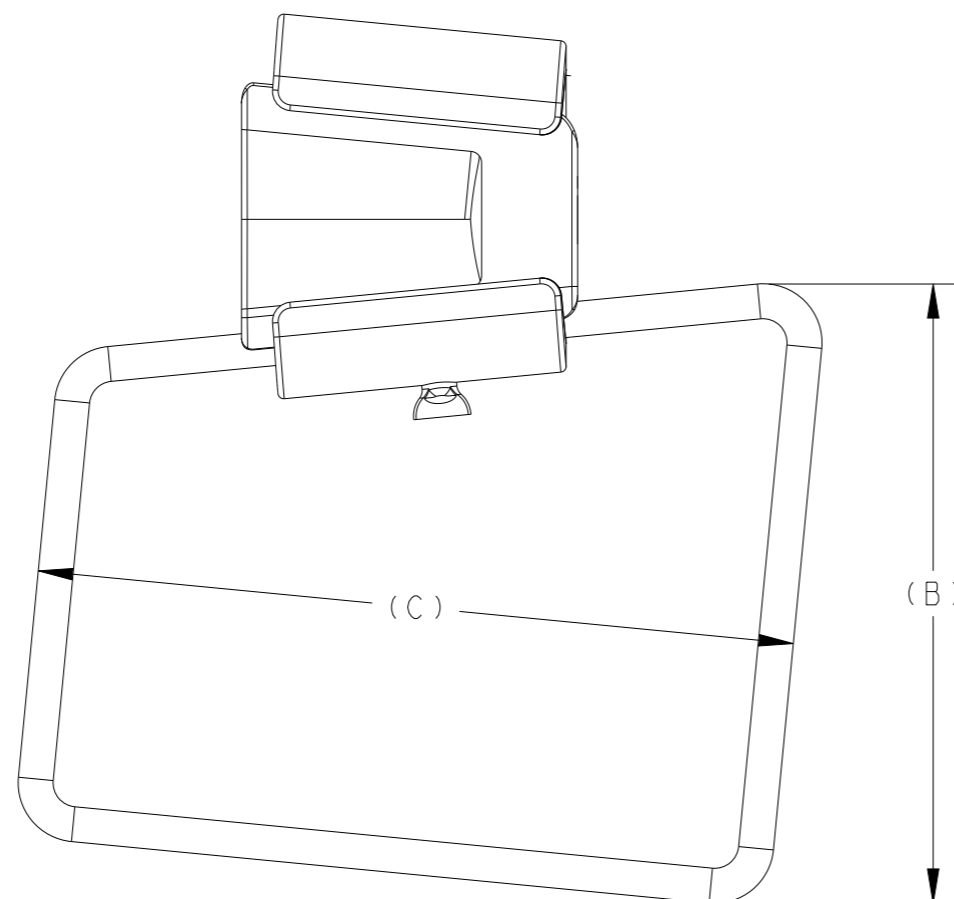
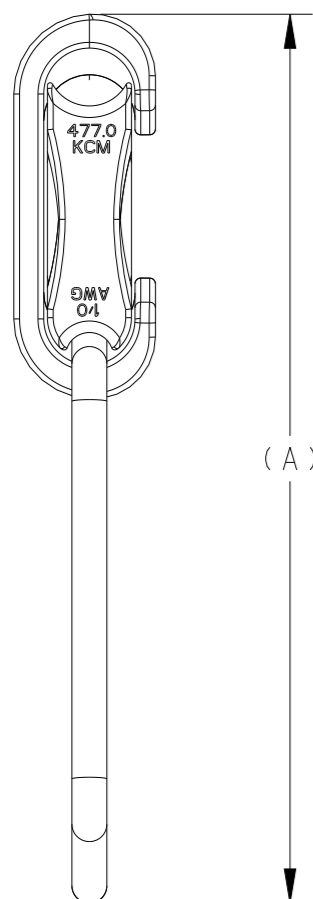


FIG 2

1. ACCOMMODATES:
SEE TABLE
2. INHIBITOR IS FACTORY APPLIED.
3. USE YELLOW SHELLS PART NO. 69338-4

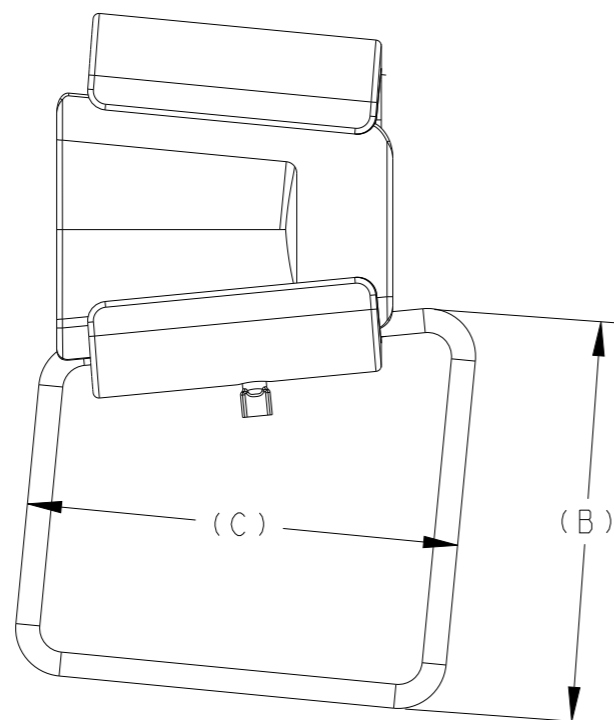
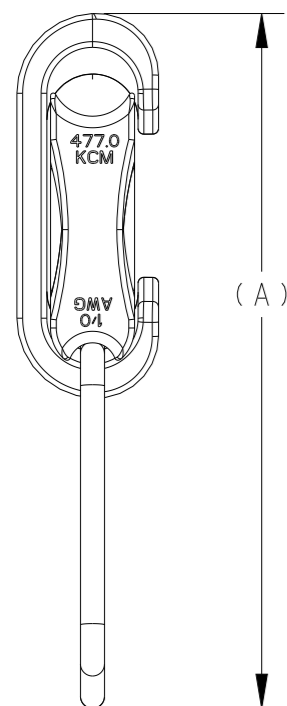


FIG 1

FIG 1	5.22	4.40	7.03	2/0 AWG	336/343-568 ACAR	602143-3
FIG 1	4.50	4.17	7.85	#2 AWG	#4 AAC - 3/0 ACSR	602143-2
FIG 2	7.90	6.45	9.22	2/0 AWG	336/343-568 ACAR	602143-1
FIG 1	5.22	4.40	7.03	2/0 AWG	477.0 KCMIL	602143
FIG	C	B	A	BAIL	CONDUCTOR SIZE	PART NO.

THIS DRAWING IS A CONTROLLED DOCUMENT.

DWN J. GUPPY 20JUL2016

CHK D. MURUGIAH 21JUL2016

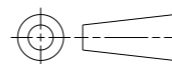
APVD B. JOHNSON 26JUL2016

STE TE Connectivity

NAME
AMPACT STIRRUP ASSEMBLY,
477.0 KCMIL TO AWG BAIL

DIMENSIONS:
INCHES

TOLERANCES UNLESS
OTHERWISE SPECIFIED:



0 PLC	±
1 PLC	±
2 PLC	±
3 PLC	±
4 PLC	±
ANGLES	±
FINISH	

MATERIAL
SEE BOM

PRODUCT SPEC

APPLICATION SPEC

WEIGHT

SIZE	CAGE CODE	DRAWING NO	RESTRICTED TO
A3	00779	602143	-

CUSTOMER DRAWING

SCALE	SHEET	OF	REV
NTS	1	1	G