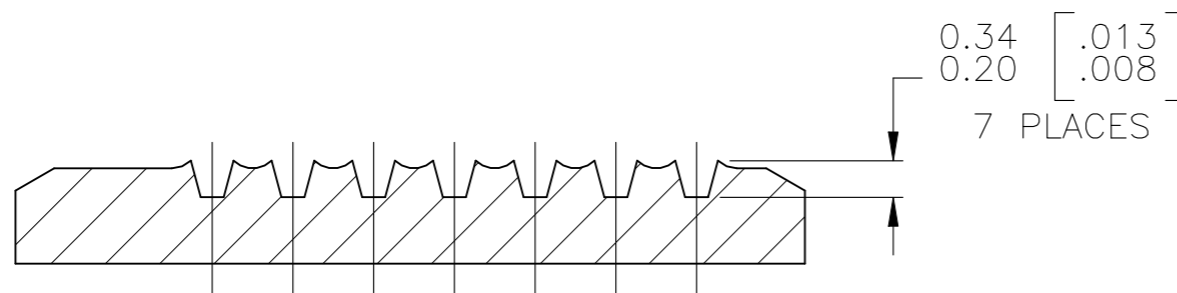
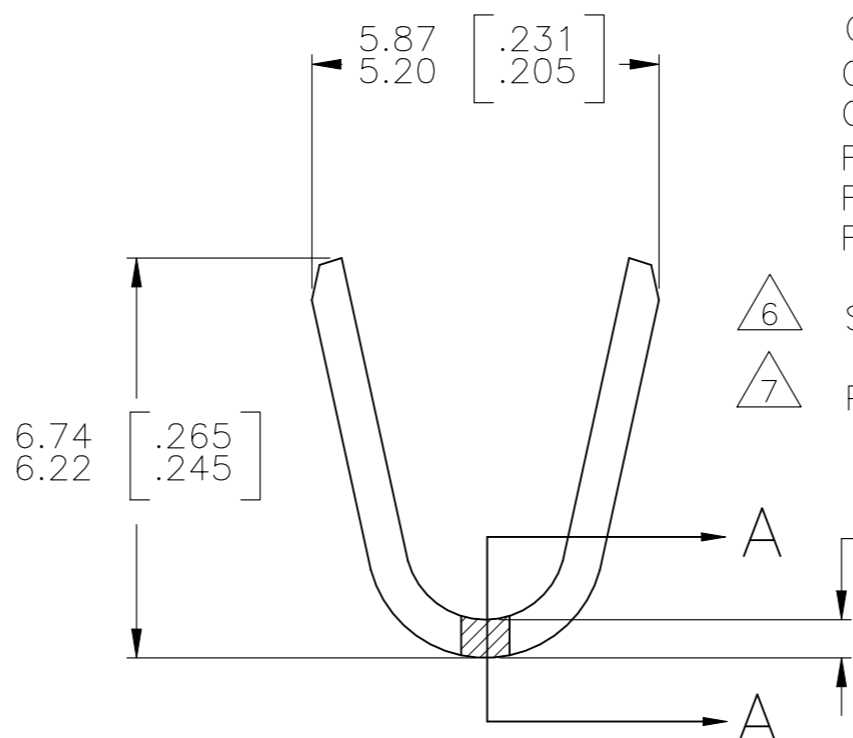
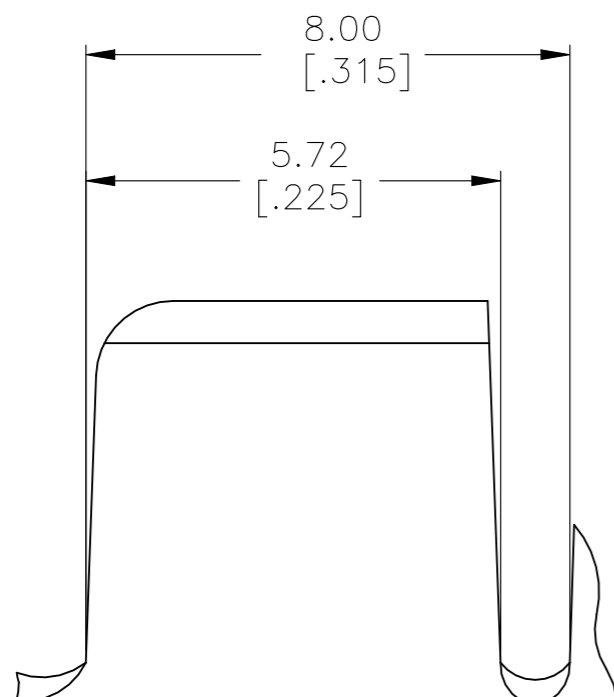
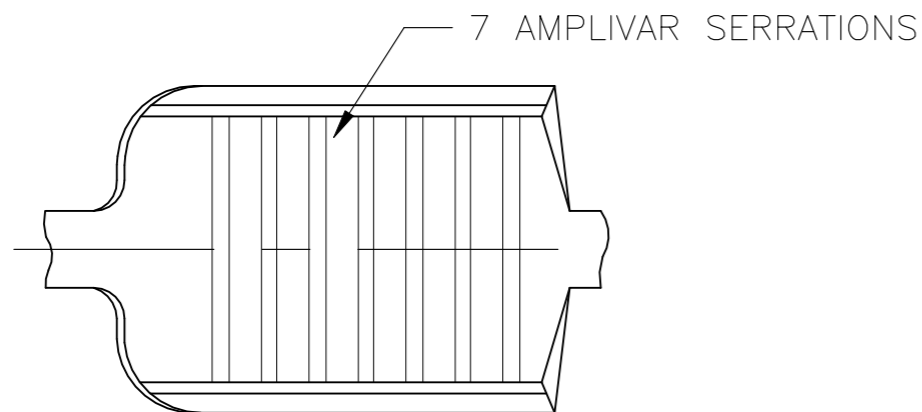


THIS DRAWING IS UNPUBLISHED. RELEASED FOR PUBLICATION  
 © COPYRIGHT BY TYCO ELECTRONICS CORPORATION. ALL RIGHTS RESERVED.

LOC	DIST	REVISIONS			
P	LTR	DESCRIPTION	DATE	DWN	APVD
AF	50	S1	REVISED PER ECR-21-103112	10MAY2021	JA TD



SECTION A-A  
SCALE 20:1

- PRODUCT PROVIDED IN STRIP FORM ON REELS; BREAKS MAY BE PRESENT.
- DIMENSIONS IN BRACKETS ARE IN INCHES.
- FOR ADDITIONAL INFORMATION, SEE APPLICATION SPEC. 114-2002.
- WIRE RANGE: 7000-13000 CMA.
- CRIMP WIDTH: .180 F TYPE (AMPLIVAR PIGTAIL)  
CRIMP HEIGHT (±.002)=(TOTAL CMA+23,000)/312,500  
CRIMP WIDTH: .220 F TYPE (AMPLIVAR PIGTAIL)  
CRIMP HEIGHT (±.002)=(TOTAL CMA+25200)/377,400  
GENERAL APPLICATION GUIDELINES MUST BE FOLLOWED AS SPECIFIED IN CATALOG #82221  
FOR APPLICATOR INFORMATION CALL:1-800-722-1111  
FOR PRODUCT INFORMATION CALL:1-800-522-6752

- 6 SPLICE FREE VERSION
- 7 PRELIMINARY NOT FOR PRODUCTION

7	6	TIN PLATE	62002-3
		TIN PLATE	62002-2
OBSOLETE			62002-1
		FINISH	PART NO

DIMENSIONS:		TOLERANCES UNLESS OTHERWISE SPECIFIED:		DWN		TE Connectivity	
mm	[INCHES]	PLC		CHK	NAME	SIZE	CAGE CODE
		0	± -	RAGHAVENDRA	G.D.PORTA	A3	00779
		1	± -	G.D.PORTA	G.D.PORTA	C	62002
		2	± -				
		3	± 0.38 [.015]				
		4	± -				
		ANGLES	± 1° 0'				
MATERIAL		FINISH		PRODUCT SPEC		DRAWING NO	
BRASS		SEE TABLE		APPLICATION SPEC		RESTRICTED TO	
CUSTOMER DRAWING				WEIGHT		SCALE	
				-		8:1	
						SHEET	
						1 OF 1	
						REV	
						S1	