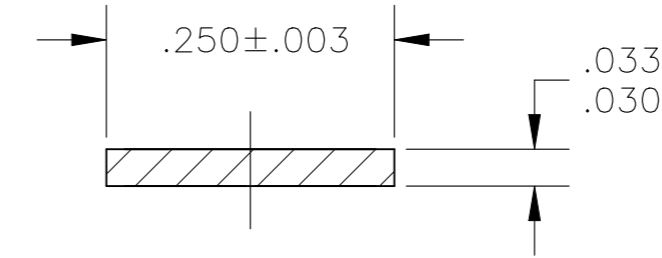
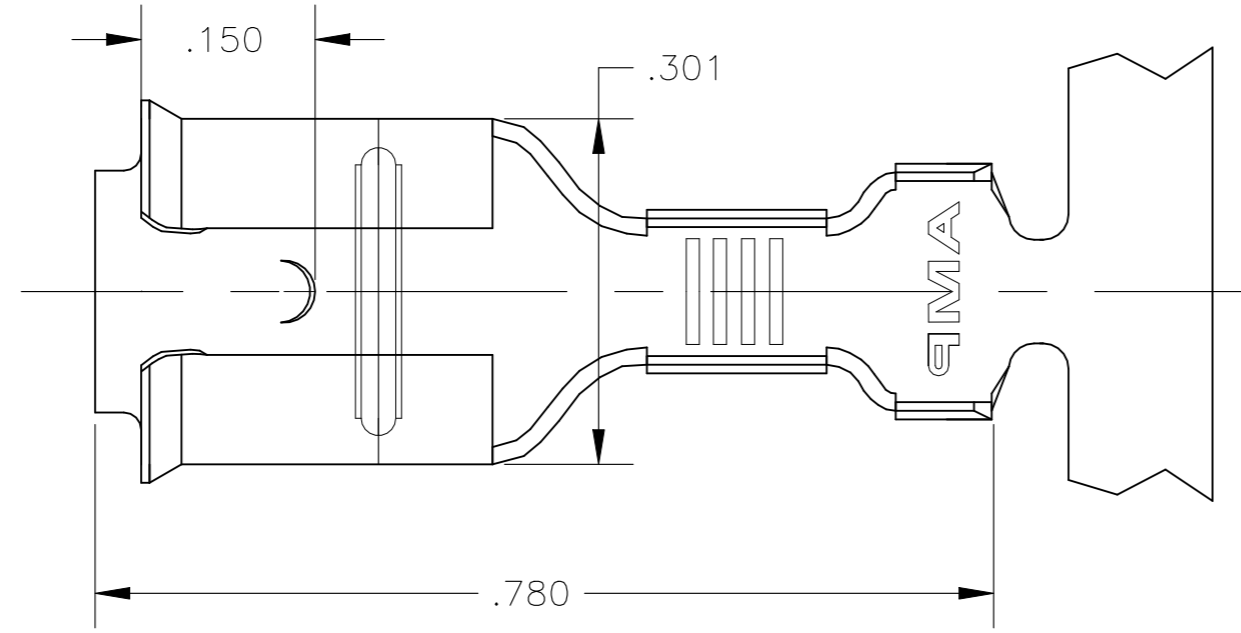
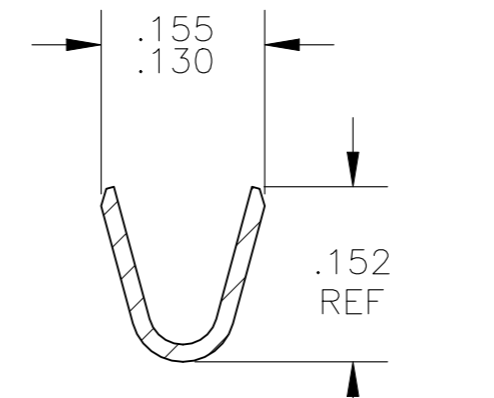
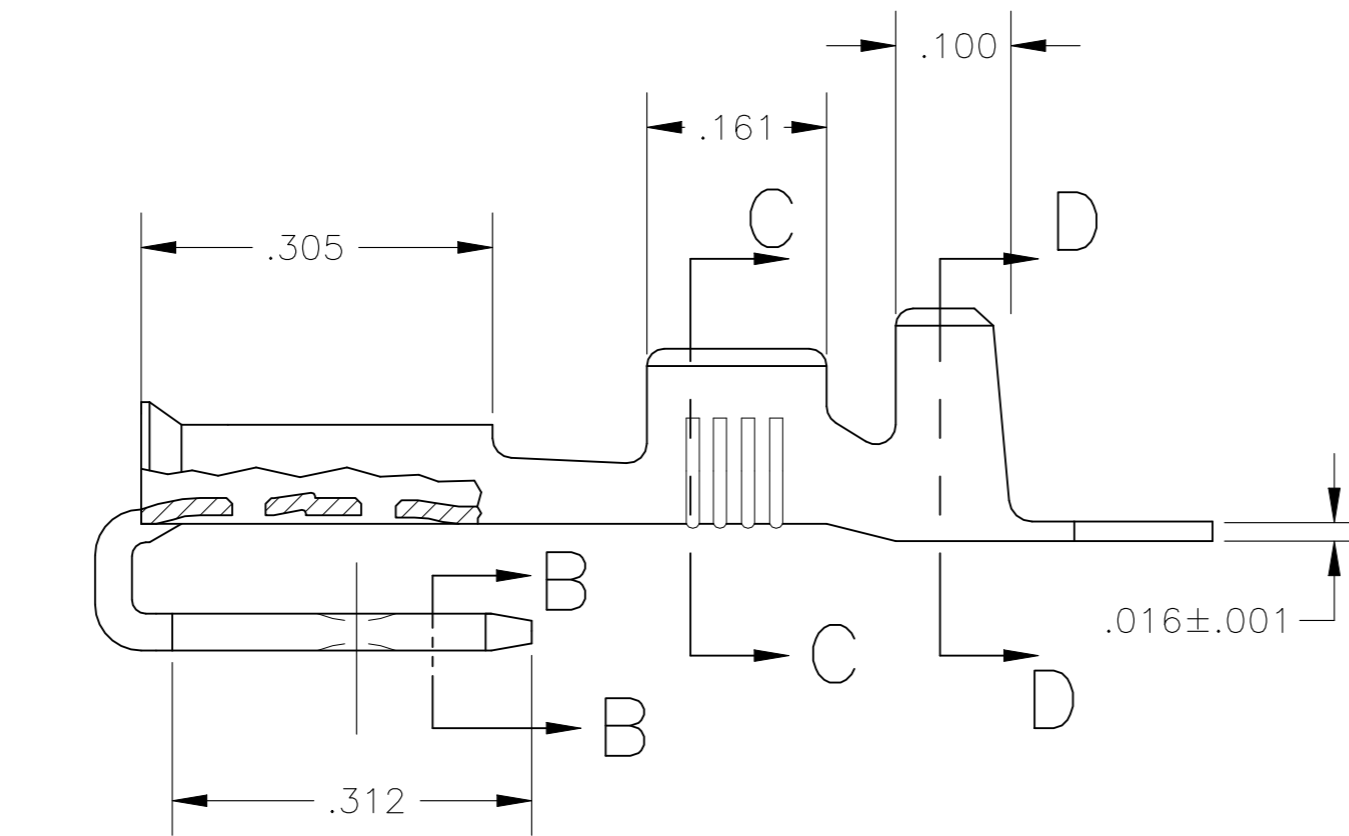
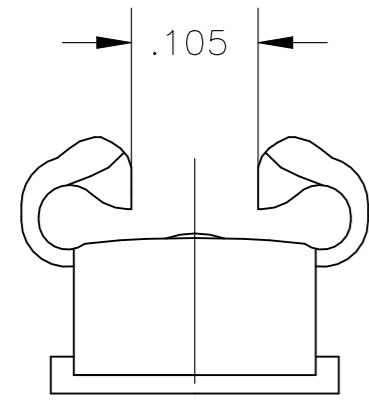


REVISIONS					
P	LTR	DESCRIPTION	DATE	DWN	APVD
J1		REVISED PER ECR-21-113405	31MAY2022	SS	DH

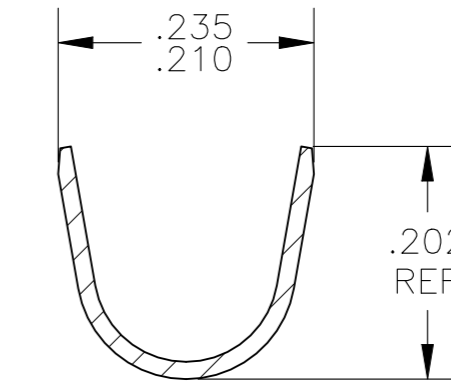
- CONTINUOUS STRIP ON REELS
- MATING TAB THK IS $.032 \pm .001$.
- WIRE SIZE IS #18-#14 AWG
CRIMP WIDTH IS .110, F TYPE
- INSULATION RANGE IS .120-.170 DIA.
CRIMP WIDTH IS .180, F TYPE
- THE GAP ON THE ROLLS TO BE IN CONTACT WITH THE TAB FOR THE LENGTH OF THE ROLL BEHIND THE LEAD-IN.



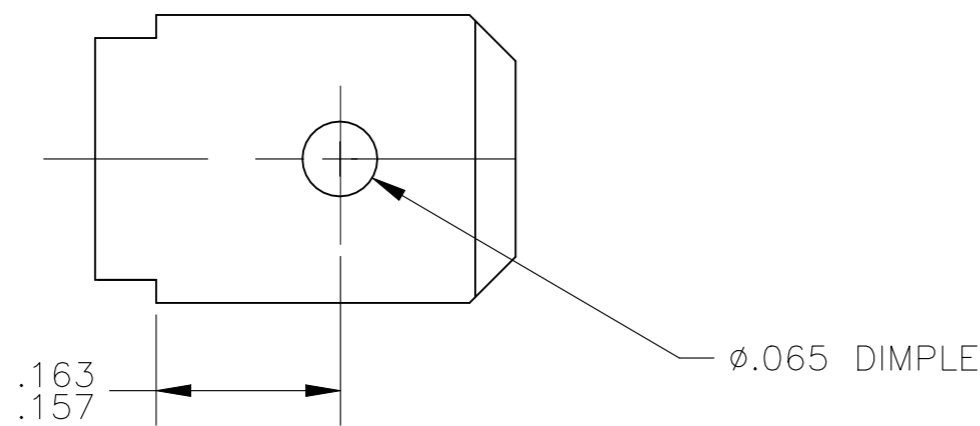
SECTION B-B



SECTION C-C



SECTION D-D



BRASS / TIN	62109-2
BRASS / PLAIN	62109-1
MATL. / FINISH	PART NO.

THIS DRAWING IS A CONTROLLED DOCUMENT.		DWN	JR_RUTH	29JUL02		TE Connectivity																					
DIMENSIONS: INCHES		CHK	P_DESANTIS	29JUL02		NAME																					
TOLERANCES UNLESS OTHERWISE SPECIFIED:		APVD	P_DESANTIS	29JUL02		PRODUCT SPEC																					
<table border="1"> <tr><td>0 PLC</td><td>±</td><td>-</td></tr> <tr><td>1 PLC</td><td>±</td><td>-</td></tr> <tr><td>2 PLC</td><td>±</td><td>-</td></tr> <tr><td>3 PLC</td><td>±</td><td>.015</td></tr> <tr><td>4 PLC</td><td>±</td><td>-</td></tr> <tr><td>ANGLES</td><td>±</td><td>-</td></tr> </table>		0 PLC	±	-		1 PLC	±	-	2 PLC	±	-	3 PLC	±	.015	4 PLC	±	-	ANGLES	±	-	APPLICATION SPEC		114-2082		SIZE	CAGE CODE	DRAWING NO
0 PLC	±	-																									
1 PLC	±	-																									
2 PLC	±	-																									
3 PLC	±	.015																									
4 PLC	±	-																									
ANGLES	±	-																									
MATERIAL	SEE TABLE	FINISH	SEE TABLE	WEIGHT	0.000000	A2	00779	C=62109	-																		
CUSTOMER DRAWING						SCALE	6:1	SHEET	1 of 1	REV	J1																