

THIS DRAWING IS UNPUBLISHED.

RELEASED FOR PUBLICATION

ALL RIGHTS RESERVED.

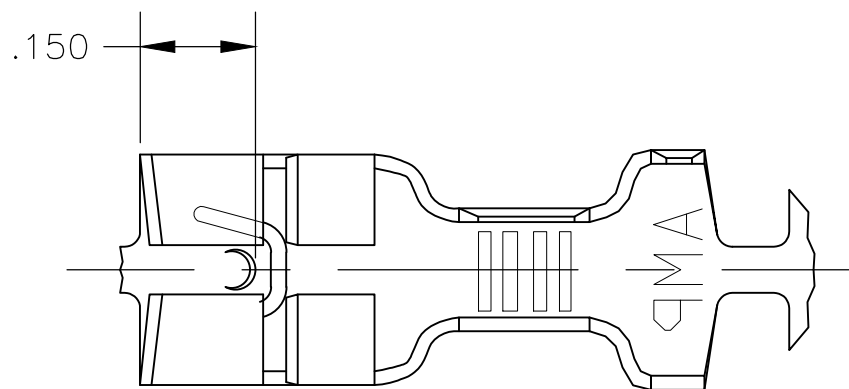
© COPYRIGHT - By -

LOC AF DIST 50

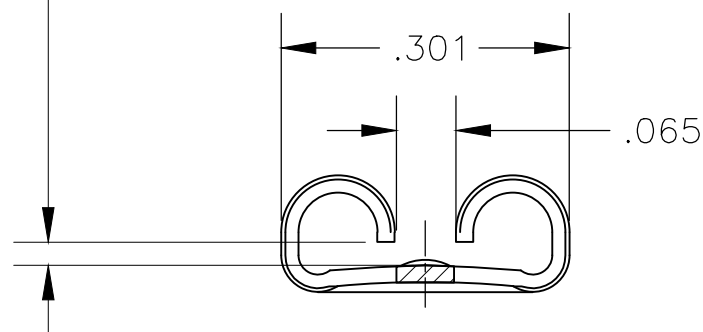
REVISIONS

P	LTR	DESCRIPTION	DATE	DWN	APVD
	F1	REVISED PER ECR-20-009164	20JUL2020	MK	DH

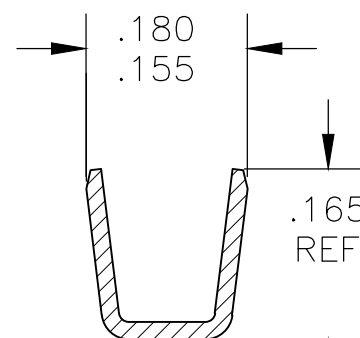
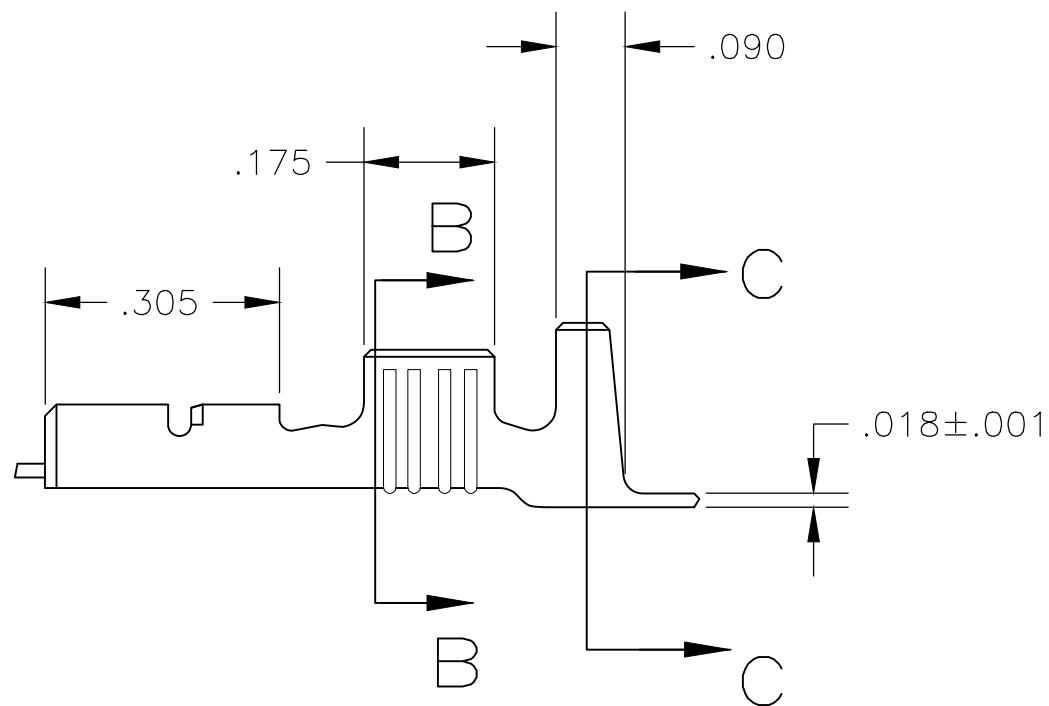
- 1 CONTINUOUS STRIP ON REELS
- 2 MATING TAB THK .033-.030
- 3 WIRE SIZE IS 16-12 OR TWO #18'S.
- 4 INSULATION RANGE .210-.265 OR TWO AT .120 MAX DIA.



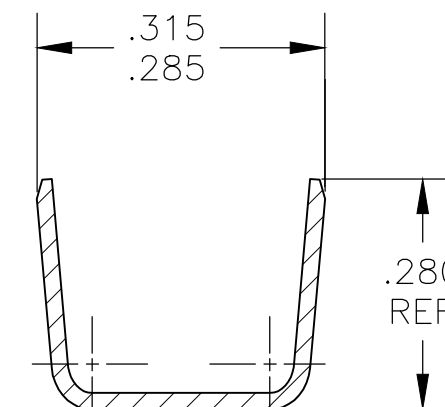
GAP AS REQUIRED TO MEET FORCE SPECIFICATIONS AND .028 MAX



VIEW A-A SCALE 5:1



SECTION B-B SCALE 5:1



SECTION C-C SCALE 5:1

.000150 MIN NICKEL	T2 STEEL	63757-2
-	BRASS	63757-1
FINISH	MATERIAL	PART NO.

THIS DRAWING IS A CONTROLLED DOCUMENT.		DWN JR RUTH 10/27/93	TE Connectivity RECPT, FASTON, LOW-INSERTION, .250 SERIES					
DIMENSIONS: INCHES		CHK MS FEHER 10/27/93				NAME		
TOLERANCES UNLESS OTHERWISE SPECIFIED:		APVD R REINER 10/27/93				SIZE CAGE CODE DRAWING NO RESTRICTED TO		
0 PLC ± - 1 PLC ± - 2 PLC ± .010 3 PLC ± - 4 PLC ± - ANGLES ± -		PRODUCT SPEC -				A300779 C-63757		
MATERIAL SEE TABLE		APPLICATION SPEC 114-2036	SCALE 4:1 SHEET 1 OF 1 REV F1					
FINISH SEE TABLE		WEIGHT -	CUSTOMER DRAWING					