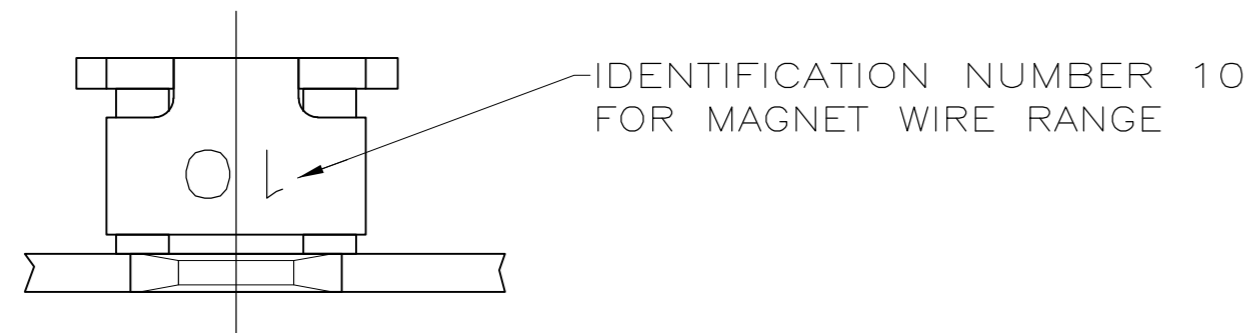
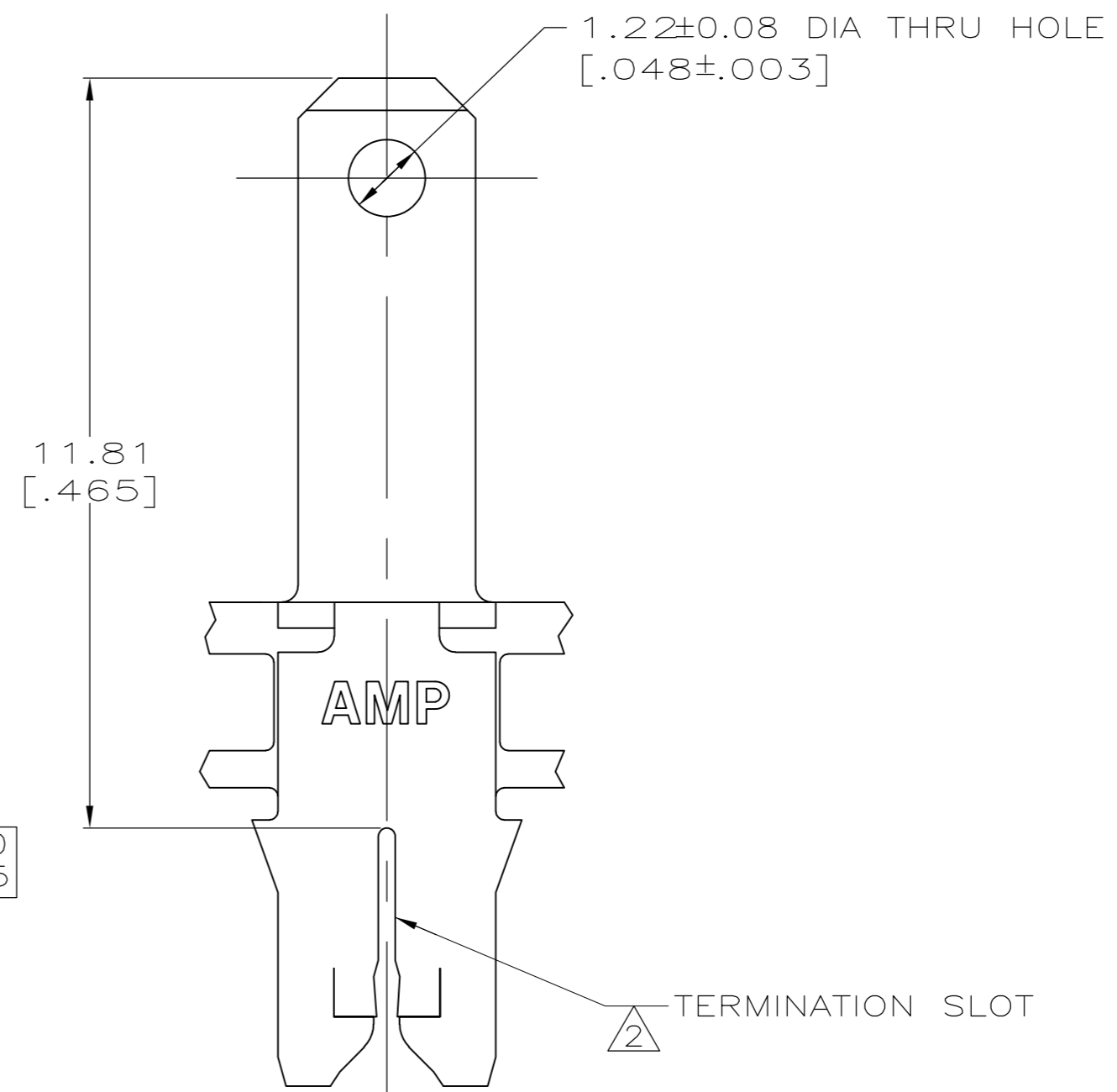
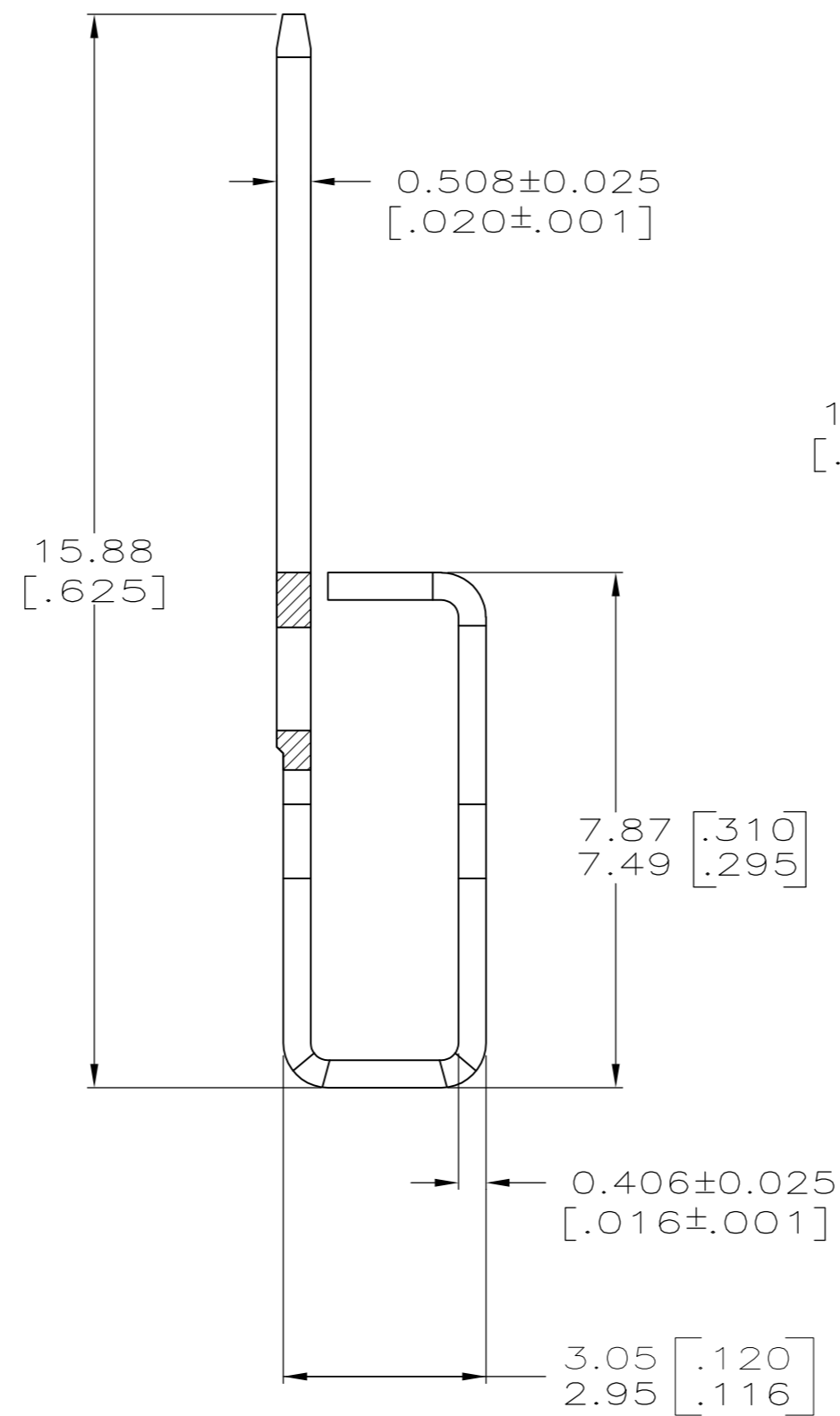
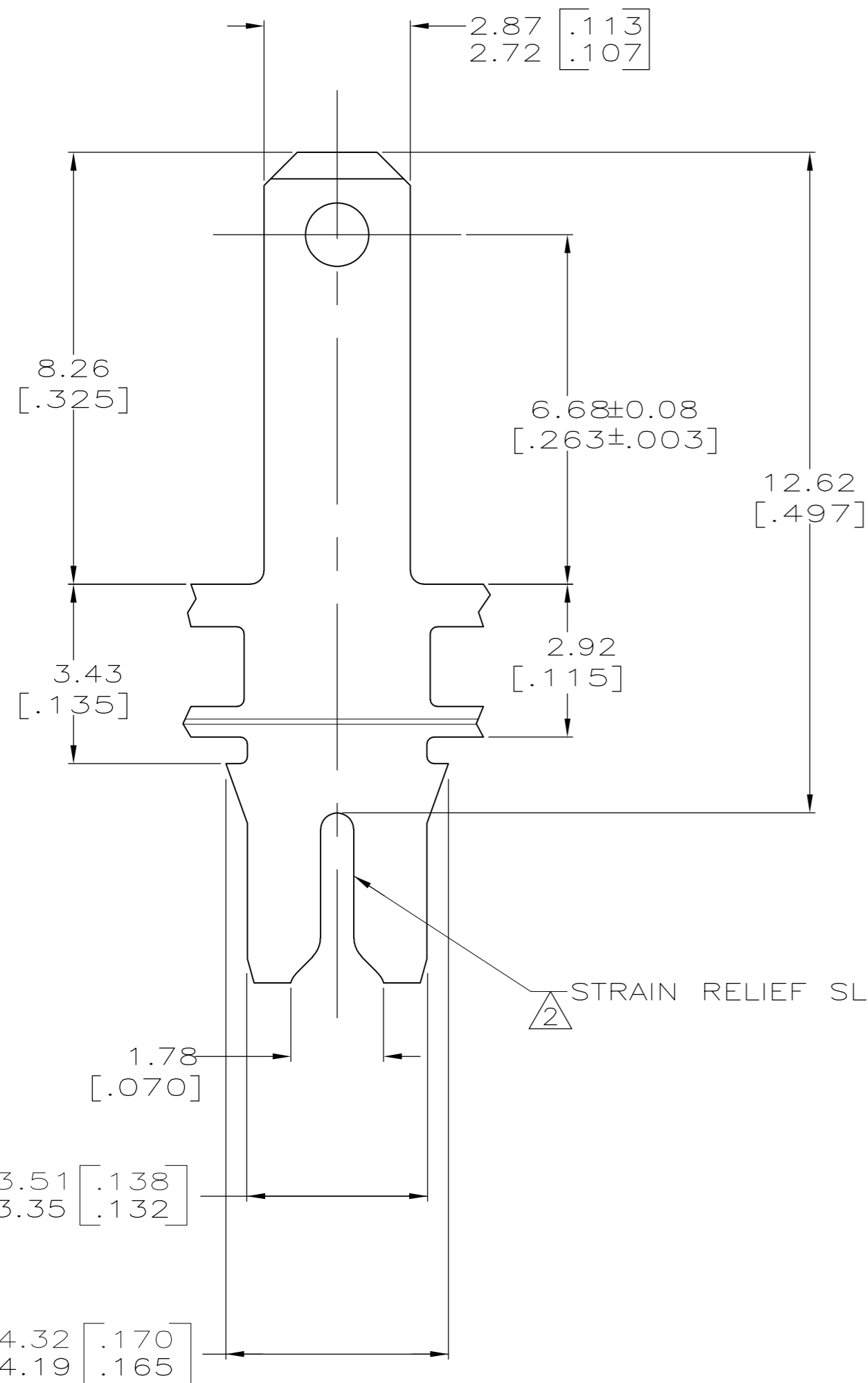


THIS DRAWING IS UNPUBLISHED. RELEASED FOR PUBLICATION
 © COPYRIGHT - TE Connectivity Ltd. ALL RIGHTS RESERVED.

| REVISIONS | | | | |
|-----------|-----|---------------------------|-----------|-------|
| P | LTR | DESCRIPTION | DATE | APVD |
| B2 | | REVISED PER ECR-18-018655 | 11DEC2018 | BW SV |



1 CONTINUOUS STRIP ON REELS WITH TERMINALS LOCATED ON 5.59±0.08 [.220±.003] CENTERS.
 2 SLOT TERMINATES A SINGLE OR DOUBLE MAGNET WIRE. COPPER RANGE: 0.36-0.57mm [#27-#23] AWG. ALUMINUM RANGE: 0.51-0.64mm [#24-#22] AWG. ALUMINUM WIRE RANGE APPLIES FOR POST-TIN PLATED VERSIONS ONLY.



63827-1
PART NO.

| | | | | |
|--|------------|----------------------------------|---|-----------------|
| THIS DRAWING IS A CONTROLLED DOCUMENT. | | DWN R.GRZYBOWSKI 10/FEB/95 | TE TE Connectivity Ltd. | |
| DIMENSIONS: MM [INCHES] | | CHK PHILLIP M. FORTNEY 10/FEB/95 | | |
| TOLERANCES UNLESS OTHERWISE SPECIFIED: | | APVD MS.FEHER 10/FEB/95 | NAME | |
| 0 PLC ± - | 1 PLC ± - | PRODUCT SPEC 108-2012 | TERMINAL, TAB, 2.79 [.110] FASTON, MAG-MATE | |
| 2 PLC ± 0.25 [.010] | 3 PLC ± - | APPLICATION SPEC 114-2046 | SIZE A2 | CAGE CODE 00779 |
| 4 PLC ± - | ANGLES ± - | MATERIAL 4M PRE-MILLED BRASS | DRAWING NO C=63827 | RESTRICTED TO - |
| FINISH TIN PLATE | | WEIGHT - | SCALE 10:1 | SHEET 1 of 1 |
| CUSTOMER DRAWING | | | REV B2 | |