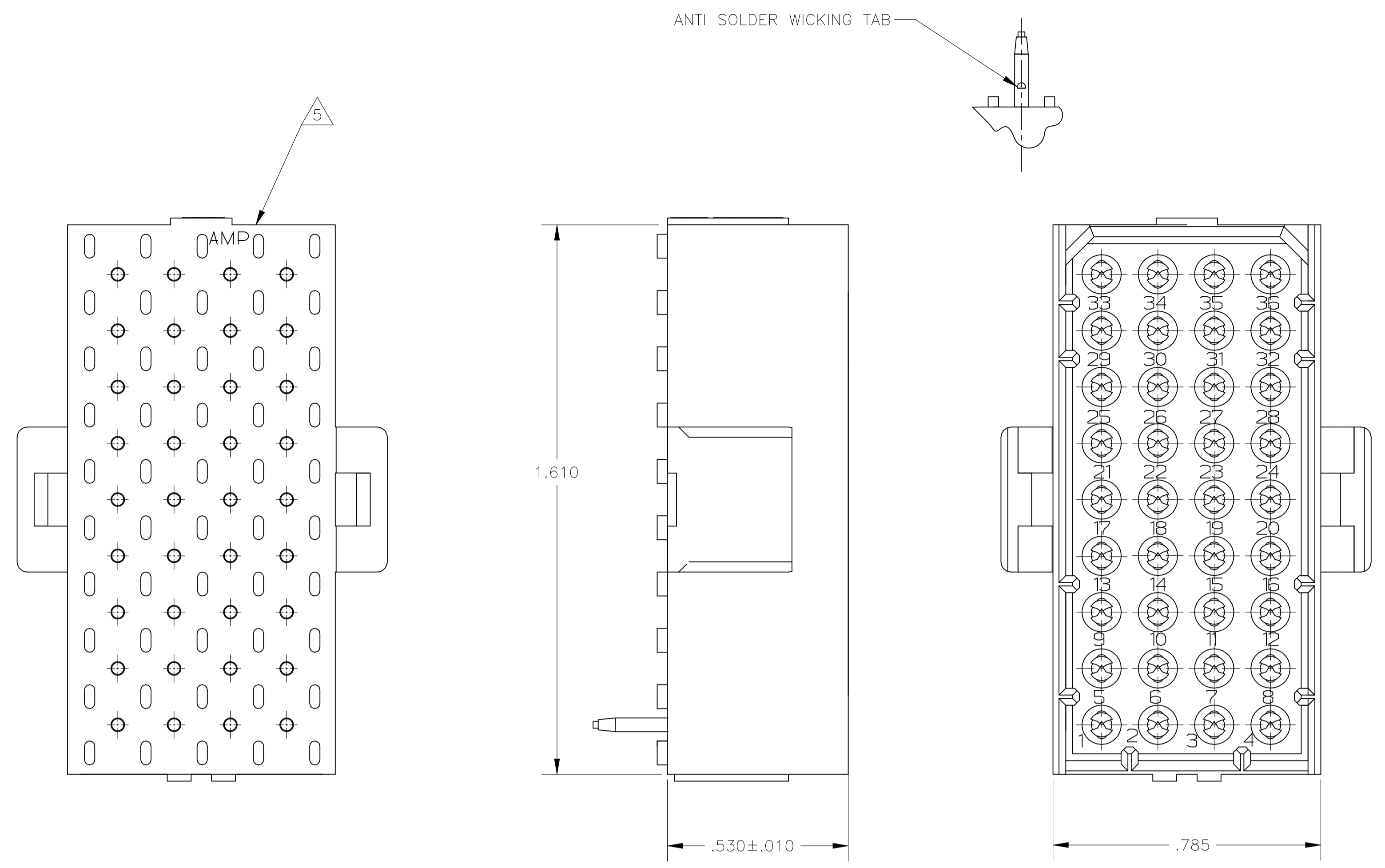
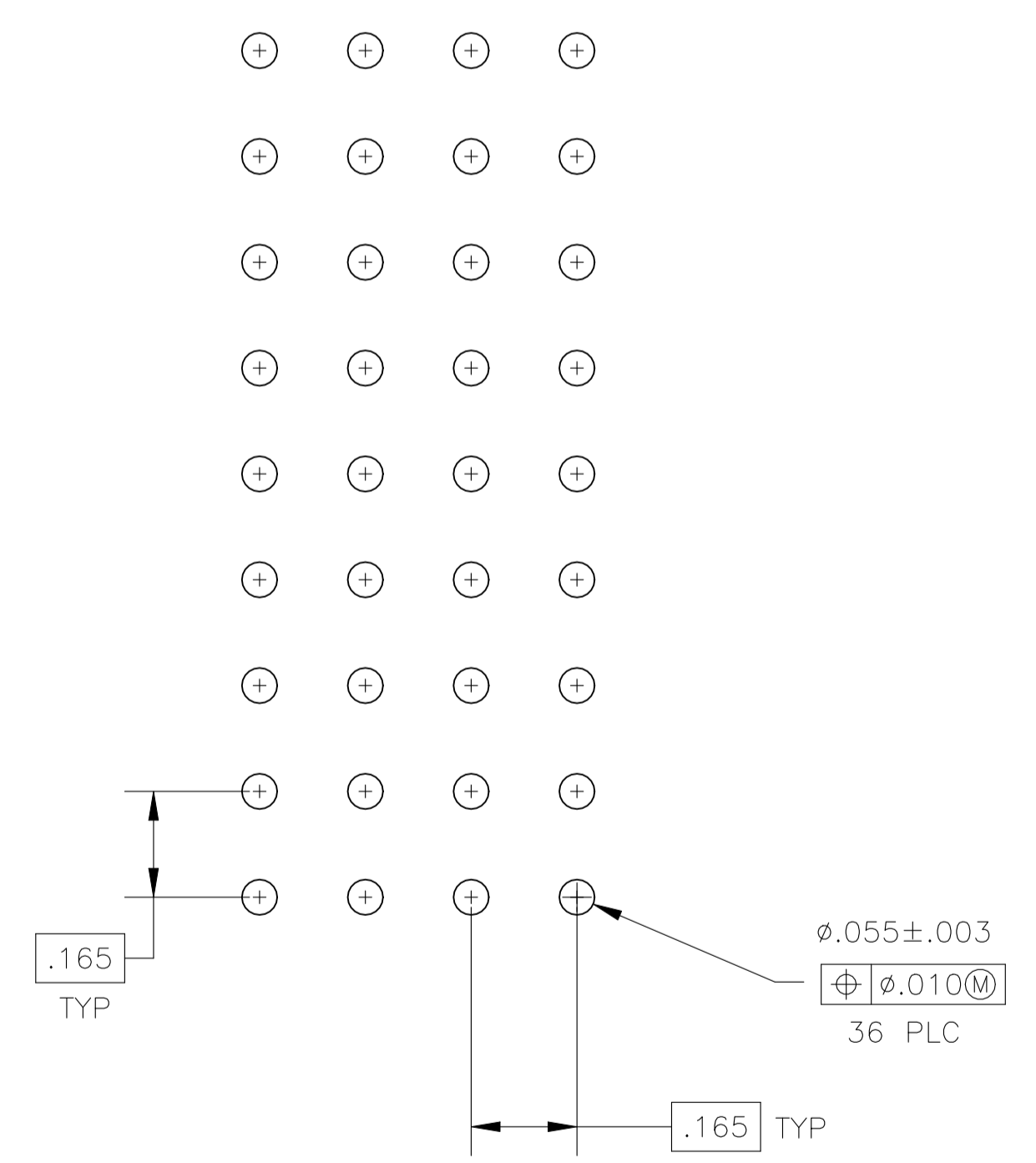


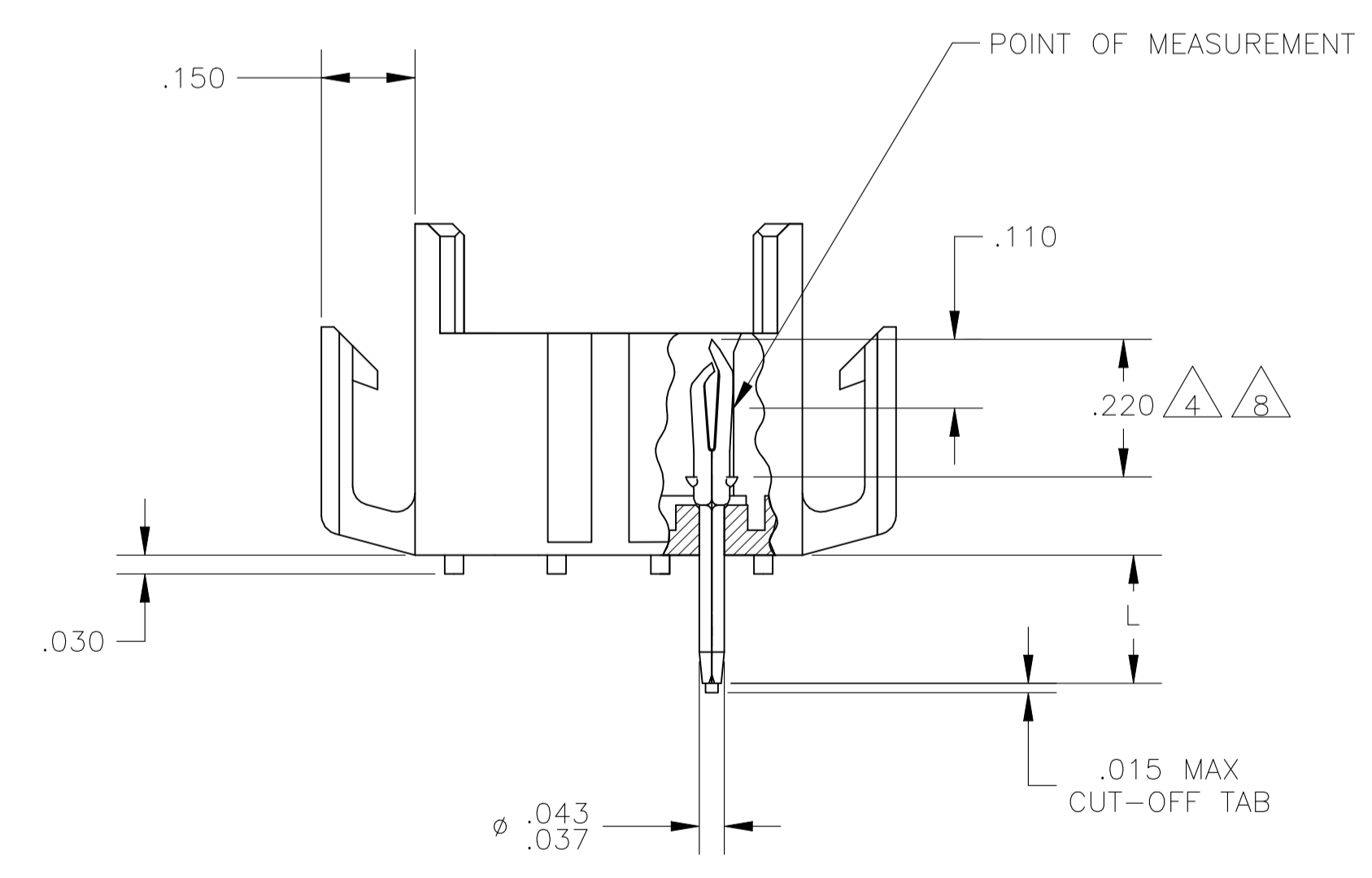
| REVISIONS | | | | | |
|-----------|-----|---------------------------|-----------|-----|------|
| P | LTR | DESCRIPTION | DATE | DRN | APVD |
| V | | REVISED PER ECO-21-006900 | 13DEC2021 | RK | MZ |



- 1 FITS SOCKET HOUSING 640526.
- 2 ASSEMBLY CONFORMS TO AMP SOLDERABILITY SPEC. 109-11-3.
- 3 FOR USE WITH .063 THICK P.C. BOARD.
- 4 CONTACT IS PLATED OVERALL WITH .000050 NICKEL, THEN .000030 GOLD OVER CONTACT LENGTH INDICATED AND .000150 MATTE TIN-LEAD ON SOLDER TAIL END.
- 5 UL AND CSA LOGO LOCATED ON THIS SURFACE.
- 6 FOR USE WITH .120 THICK P.C. BOARD.
- 7 TRAY PACKAGED VERSION OF 640506-1. PACKAGED 54 PCS. PER TRAY AND 7 TRAYS PER BOX.
- 8 CONTACT IS PLATED OVERALL WITH .000050 NICKEL, THEN .000030 GOLD OVER CONTACT LENGTH INDICATED AND .000150 MATTE TIN ON SOLDER TAIL END.
- 9 OBSOLETE PARTS: OBSOLETE CIS STREAMLINING PER D.RENAUD/D.SINISI
- 10 PARTITION PACKED AND BOXED, 270 PCS PER CARTON.
- 11 HOUSING MATERIAL: PA66, BLACK, UL 94 V-0 RATED
CONTACT MATERIAL: PHOSPHOR BRONZE



RECOMMENDED P.C. BOARD LAYOUT



| IN | MM | IN | MM | IN | MM |
|---------|---------|------|------|-------|-------|
| .015 | 0.38 | .110 | 2.79 | 1.610 | 40.89 |
| .010 | 0.25 | .063 | 1.60 | .785 | 19.94 |
| .008 | 0.20 | .055 | 1.40 | .530 | 13.46 |
| .005 | 0.13 | .043 | 1.09 | .220 | 5.59 |
| .003 | 0.08 | .037 | 0.94 | .210 | 5.33 |
| .000050 | 0.00127 | .030 | 0.76 | .165 | 4.19 |
| .000030 | 0.00076 | .020 | 0.51 | .150 | 3.81 |

CONVERSION TABLE

| | | | | | | |
|------|----------|-----------------|---|------------|---|-------------|
| 10 | OBSOLETE | .210 | 6 | GOLD | 4 | -1-640506-4 |
| | | .210 | 6 | GOLD | 8 | 2-640506-4 |
| | | .150 | 3 | GOLD | 8 | 2-640506-2 |
| 7, 9 | OBSOLETE | .150 | 3 | PRE-TIN | | -1-640506-0 |
| | | .210 | 6 | GOLD | 4 | 640506-4 |
| | | .210 | 6 | PRE-TIN | | 640506-3 |
| | | .150 | 3 | GOLD | 4 | 640506-2 |
| | | .150 | 3 | PRE-TIN | | 640506-1 |
| | "L" | +0.010 -.020 | | PIN FINISH | | PART NUMBER |

THIS DRAWING IS A CONTROLLED DOCUMENT.

| | | | | | |
|--------------------|--|--------------------------|------------------------|---------------------------|-----------------------|
| DIMENSIONS: INCHES | TOLERANCES UNLESS OTHERWISE SPECIFIED: | DIN J. HUFFMAN 28 APR 98 | CHK R. SWING 28 APR 98 | APVD T. REDDICK 28 APR 98 | NAME |
| | 0. PLC ± - | | | | TE Connectivity |
| | 1. PLC ± - | | | | HEADER ASSEMBLY, PIN, |
| | 2. PLC ± - | | | | 36 POSITION MR. |
| | 3. PLC ± .005 | | | | |
| | 4. PLC ± - | | | | |
| | ANGLES ± 0° 30' | | | | |
| MATERIAL | FINISH SEE FINISH | SIZE | CAGE CODE | DRAWING NO | RESTRICTED TO |
| | | A1 | 00779 | 640506 | |
| | | WEIGHT | | | |
| | | CUSTOMER DRAWING | SCALE 4:1 | SHEET 1 of 1 | REV V |