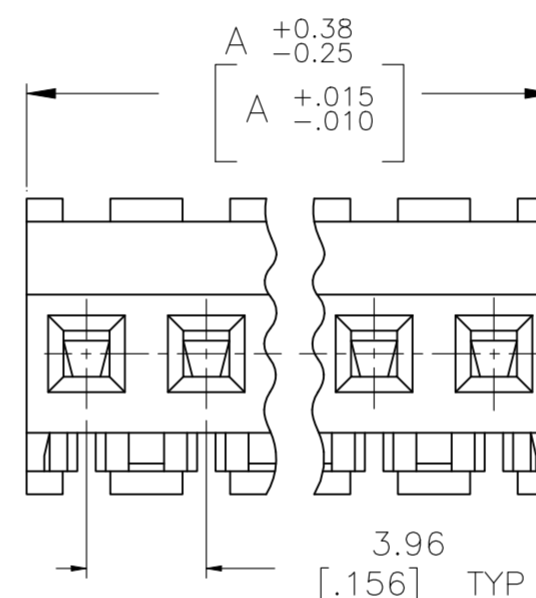
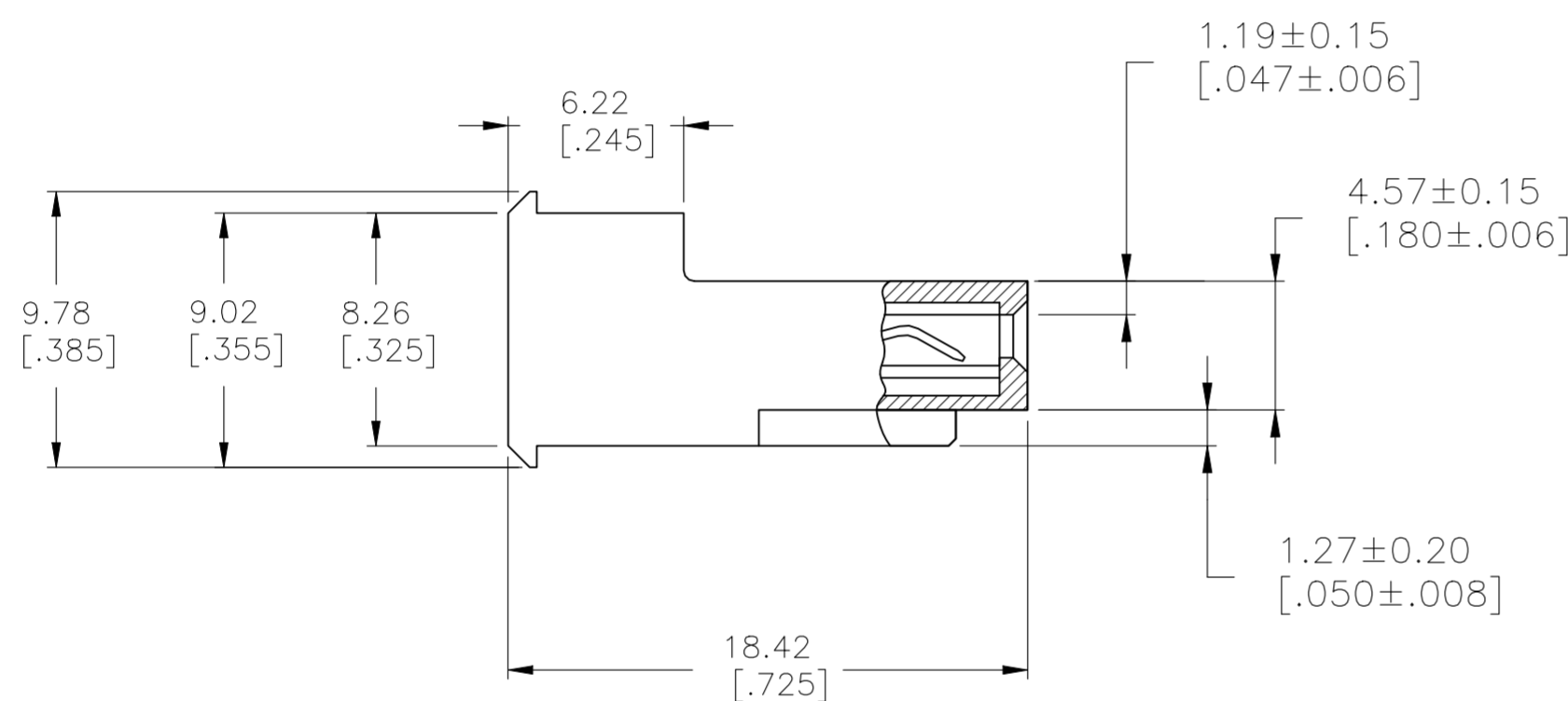
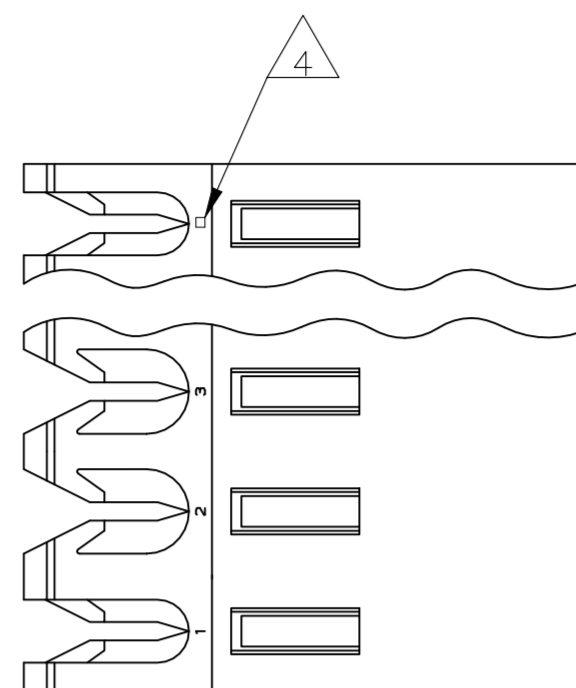


REVISIONS					
P	LTR	DESCRIPTION	DATE	DWN	APVD
W1		REVISED PER ECR-23-179060	24AUG2023	AK	JP



DIM A	NO OF CIRCUITS	PART NO
95.10 [3.744]	24	5-640606-4
91.14 [3.588]	23	5-640606-3
87.17 [3.432]	22	5-640606-2
83.21 [3.276]	21	5-640606-1
79.25 [3.120]	20	5-640606-0
75.29 [2.964]	19	4-640606-9
71.32 [2.808]	18	4-640606-8
67.36 [2.652]	17	4-640606-7
63.40 [2.496]	16	4-640606-6
59.44 [2.340]	15	4-640606-5
55.47 [2.184]	14	4-640606-4
51.51 [2.028]	13	4-640606-3
47.55 [1.872]	12	4-640606-2
43.59 [1.716]	11	4-640606-1
39.62 [1.560]	10	4-640606-0
35.66 [1.404]	9	3-640606-9
31.70 [1.248]	8	3-640606-8
27.74 [1.092]	7	3-640606-7
23.77 [.936]	6	3-640606-6
19.81 [.780]	5	3-640606-5
15.85 [.624]	4	3-640606-4
11.89 [.468]	3	3-640606-3
7.92 [.312]	2	3-640606-2
95.10 [3.744]	24	<del>2-640606-4</del>
91.14 [3.588]	23	<del>2-640606-3</del>
87.17 [3.432]	22	<del>2-640606-2</del>
83.21 [3.276]	21	<del>2-640606-1</del>
79.25 [3.120]	20	<del>2-640606-0</del>
75.29 [2.964]	19	<del>1-640606-9</del>
71.32 [2.808]	18	<del>1-640606-8</del>
67.36 [2.652]	17	<del>1-640606-7</del>
63.40 [2.496]	16	<del>1-640606-6</del>
59.44 [2.340]	15	<del>1-640606-5</del>
55.47 [2.184]	14	<del>1-640606-4</del>
51.51 [2.028]	13	<del>1-640606-3</del>
47.55 [1.872]	12	<del>1-640606-2</del>
43.59 [1.716]	11	<del>1-640606-1</del>
39.62 [1.560]	10	<del>1-640606-0</del>
35.66 [1.404]	9	<del>640606-9</del>
31.70 [1.248]	8	<del>640606-8</del>
27.74 [1.092]	7	<del>640606-7</del>
23.77 [.936]	6	<del>640606-6</del>
19.81 [.780]	5	<del>640606-5</del>
15.85 [.624]	4	<del>640606-4</del>
11.89 [.468]	3	<del>640606-3</del>
7.92 [.312]	2	<del>640606-2</del>

- 1 MATERIAL: CONNECTOR - NYLON UL94V-2 (RED).  
CONTACTS - 0.30[.012] THICK COPPER ALLOY  
(BRIGHT TIN-LEAD 0.00203[.000080] MIN. THICK  
FOR CONTACTS 640606-2 THRU 2-640606-4)  
(MATTE WHISKER MITIGATED TIN 0.00203[.000080] MIN  
THICKNESS OVER NICKEL UNDERPLATE FOR  
3-640606-2 THRU 5-640606-4).
- 2 CONTACTS ACCEPT 22 AWG WIRE WITH 2.41[.095] MAX INSULATION DIAMETER.
- 3 CONTACTS MUST ACCEPT 1.14±0.03[.045±.001] SQUARE POST AND REMAIN LOCKED IN POSITION.
- 4 IDENTIFICATION NUMBER FOR LAST CIRCUIT MAY NOT APPEAR ON ALL ASSEMBLIES.
- 5 DIMENSIONS IN BRACKETS ARE IN INCHES.
- 6 HOUSING FEATURES ARE: FEED-THRU WITHOUT LOCKING RAMP.
- 7 OBSOLETE PARTS: OBSOLETE CIS STREAMLINING PER D.RENAUD/D.SINISI
- 8 OBSOLETE PARTS

THIS DRAWING IS A CONTROLLED DOCUMENT.		DWN B. LEWIS 12FEB91		
DIMENSIONS: mm [INCHES]		CHK R. SWING 12FEB91		
TOLERANCES UNLESS OTHERWISE SPECIFIED:		APVD D. CLARK 19FEB91	NAME	
0 PLC ± -		PRODUCT SPEC	MTA-156 CONNECTOR ASSEMBLY, 22 AWG, STANDARD	
1 PLC ± -		APPLICATION SPEC	-	
2 PLC ± -		108-1051	SIZE	CAGE CODE
3 PLC ± 0.13 [.005]		114-1020	A2	W
4 PLC ± -		WEIGHT	DRAWING NO	
ANGLES ± -		-	C-640606	
FINISH		RESTRICTED TO		
1		-		
CUSTOMER DRAWING		SCALE	SHEET	REV
		4:1	1 of 1	W1