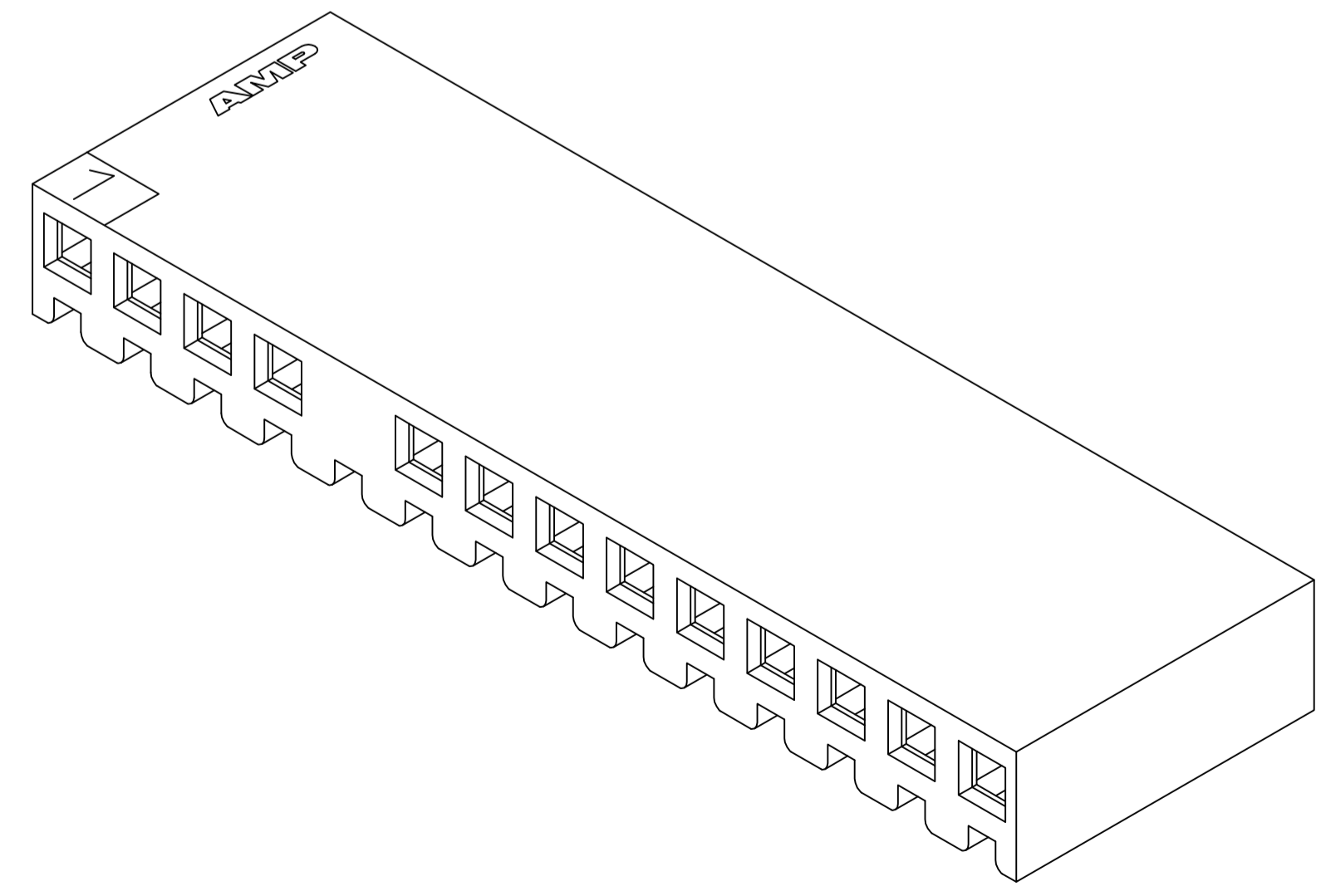
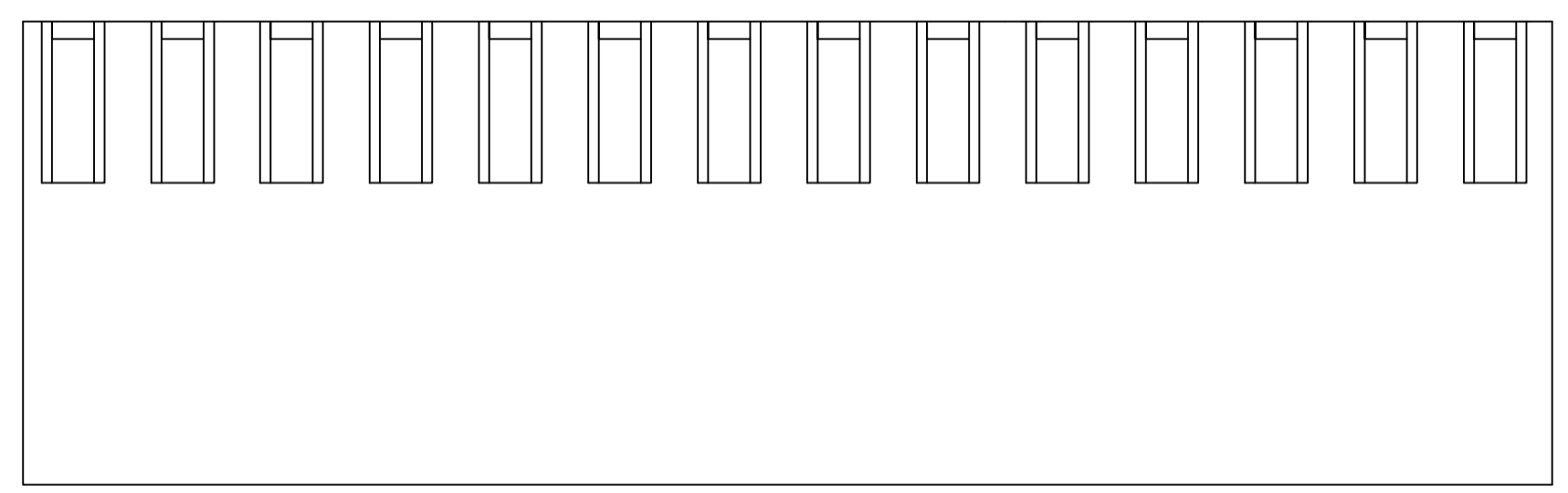
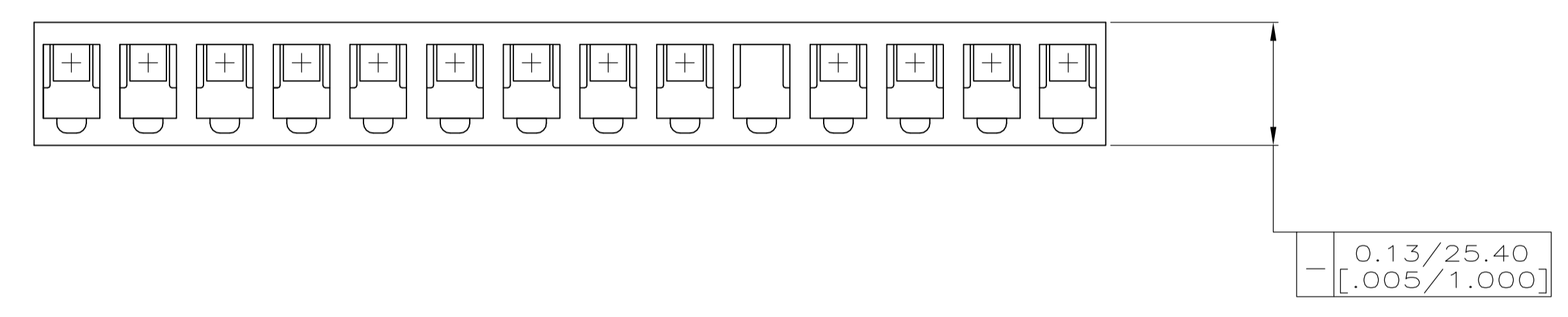
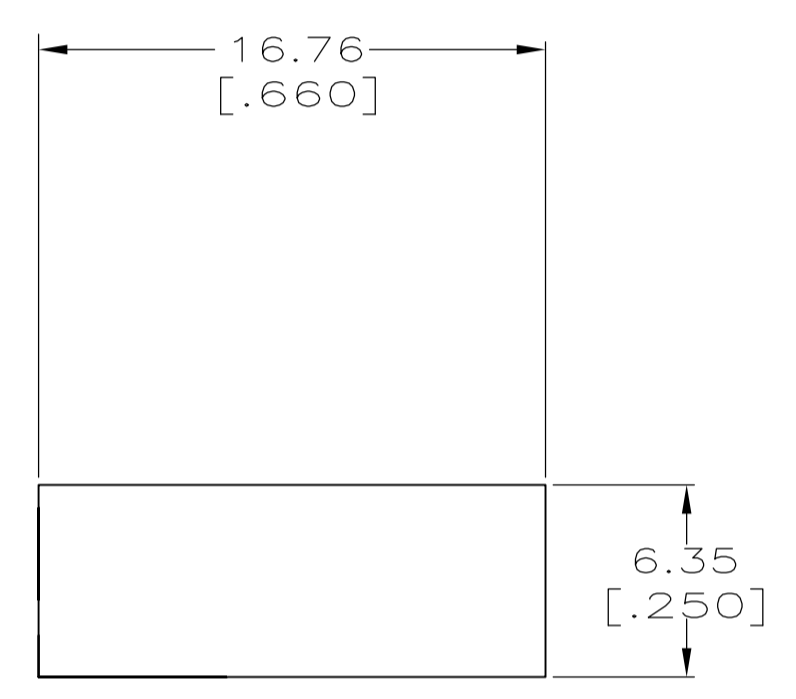
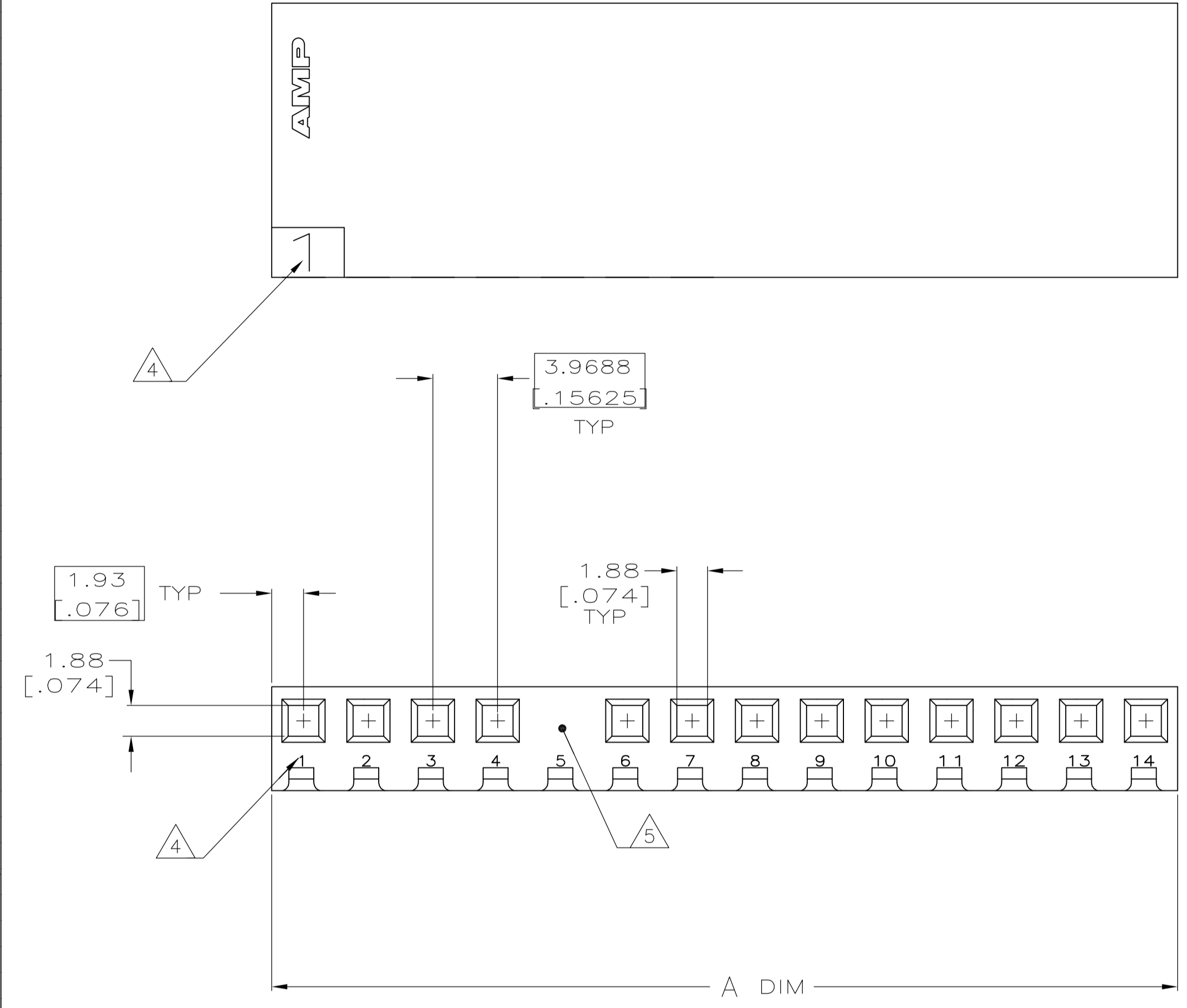
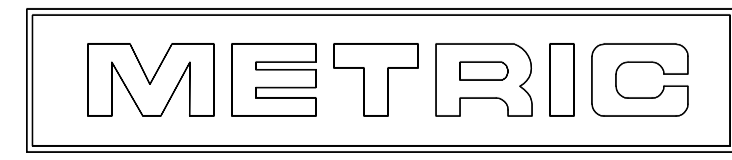


LOC		DIST		REVISIONS			
P	LTR	DESCRIPTION	DATE	DMN	APVD		
E		REVISED PER ECO-12-007807	06AUG12	KH	SM		

- 1 UNIT ACCEPTS 1.14 [.045] SQUARE OR ROUND POST.
- 2 PREFERRED SL-156 CONTACTS FOR USE WITH THIS UNIT ARE 350980, 640252, 640706, 640707, 641550 AND 770258 (ALL DASH NUMBERS).
- 3 UNIT ACCEPTS KEYING PLUG 640254-1 AND KEYING PIN 640255-1.
- 4 CIRCUIT I.D. NUMBER(S) TO BE LOCATED SEQUENTIALLY AS SHOWN OR ONLY NO. 1 CIRCUIT PLACED ON TOP OF HOUSING.
- 5 CIRCUIT 5 IS MOLDED CLOSED.
- 6 DIMENSIONS IN BRACKETS ARE IN INCHES.



3-DIMENSIONAL MODEL NTS



THIS DRAWING IS A CONTROLLED DOCUMENT.		DIN 9-16-92		55.45 [2.183]		14		1-644204-4	
DIMENSIONS: mm [INCHES]		TOLERANCES UNLESS OTHERWISE SPECIFIED:		A ±0.25 [.010]		NO. OF CIRCUITS		PART NUMBER	
0. PLC ± -		1. PLC ± -		2. PLC ± -		3. PLC ± 0.13 [.005]		4. PLC ± -	
MATERIAL NYLON,UL 94V-0 NATURAL		FINISH -		WEIGHT -		SIZE A1		CAGE CODE DRAWING NO. 00779 644204	
CUSTOMER DRAWING		SCALE 4:1		SHEET 1 OF 1		REV E			