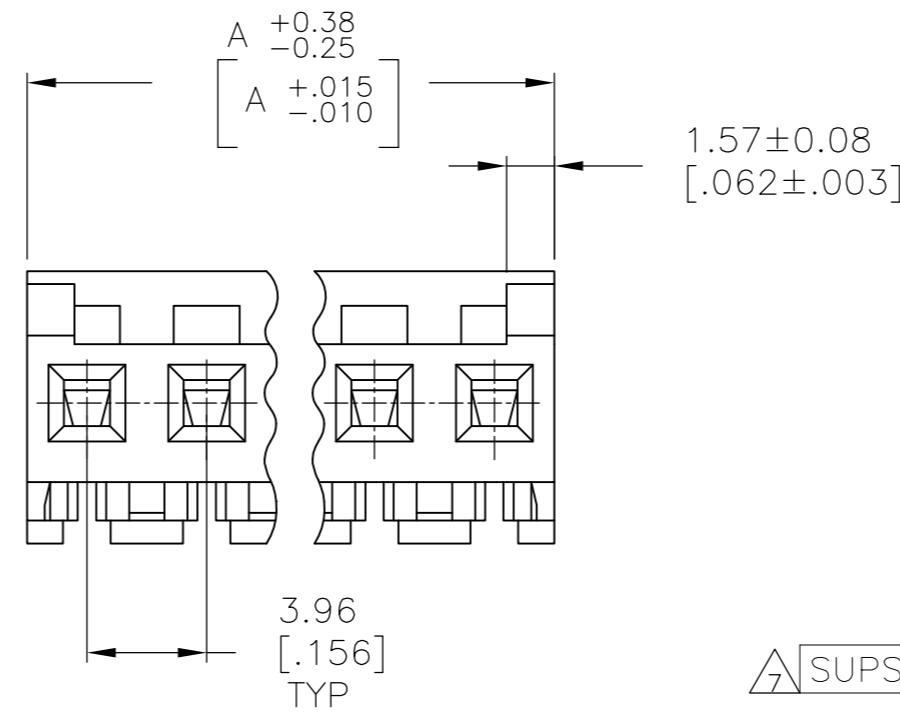
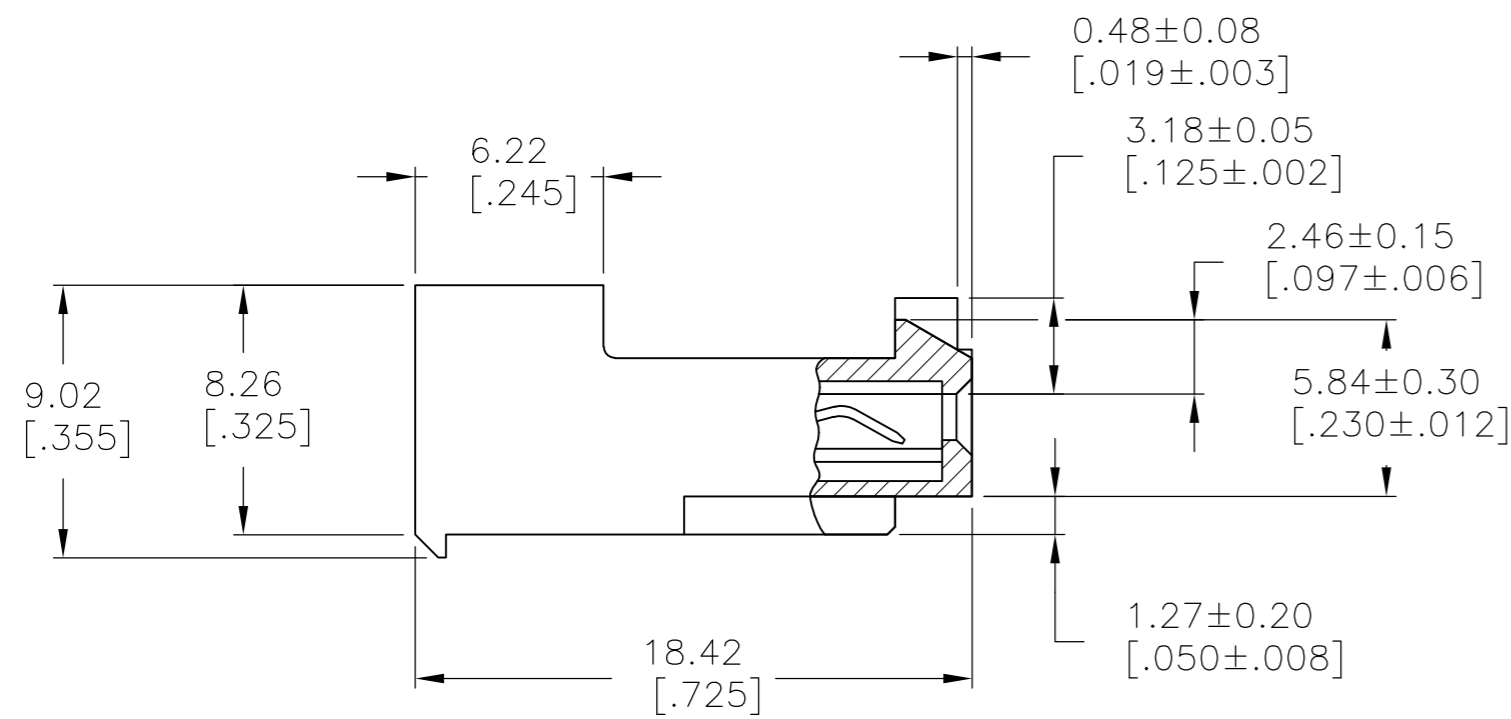
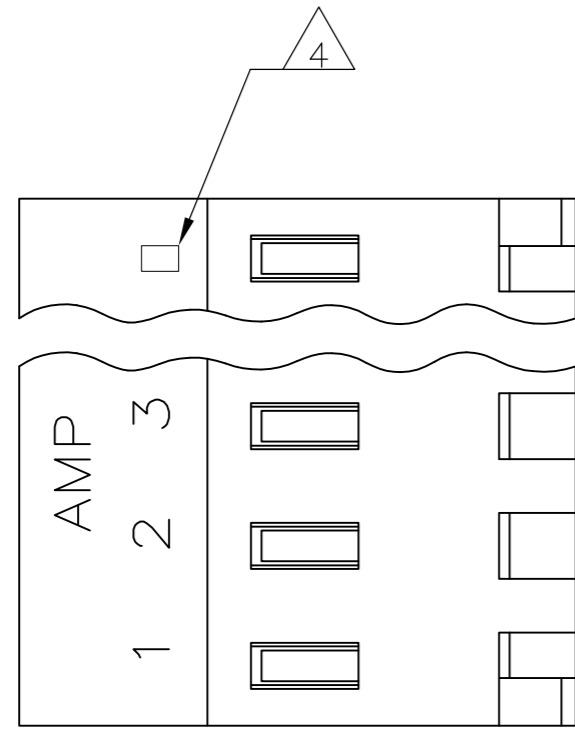


THIS DRAWING IS UNPUBLISHED. RELEASED FOR PUBLICATION  
 © COPYRIGHT - By - TE CONNECTIVITY ALL RIGHTS RESERVED.

LOC		DIST		REVISIONS			
P	LTR	DESCRIPTION		DATE	DWN	APVD	
CM	00	F		REVISED PER ECR-20-000820	27MAY2020	PC	SW

- 1 MATERIAL: CONNECTOR - NYLON UL94V-2 (YELLOW).  
 CONTACTS - 0.00076[.000030] GOLD THK OR 0.00008[.000003] MIN THK GOLD FLASH OVER 0.00068[.000027] THK PALLADIUM NICKEL, PER TE CONNECTIVITY'S DISCRETION, IN CONTACT AREA WITH MATTE TIN FOR 644663-2 THRU 1-644663-2, MATTE WHISKER MITIGATED TIN FOR 3-644663-2 THRU 4-644663-2 OVER NICKEL UNDERPLATE.
- 2 CONTACTS ACCEPT 20 AWG WIRE WITH 2.41[.095] MAX INSULATION DIAMETER.
- 3 CONTACTS MUST ACCEPT 1.14±0.03[.045±.001] POST AND REMAIN LOCKED IN POSITION.
- 4 IDENTIFICATION NUMBER FOR LAST CIRCUIT MAY NOT APPEAR ON ALL ASSEMBLIES.
- 5 DIMENSIONS IN BRACKETS ARE IN INCHES.
- 6 HOUSING FEATURES ARE: CLOSED END WITH LOCKING RAMP AND POLARIZING TAB.
- 7 OBSOLETE PARTS: OBSOLETE CIS STREAMLINING PER D.RENAUD/D.SINISI



47.55 [1.872]	12	4-644663-2	
43.59 [1.716]	11	4-644663-1	
39.62 [1.560]	10	4-644663-0	
35.66 [1.404]	9	3-644663-9	
31.70 [1.248]	8	3-644663-8	
27.74 [1.092]	7	3-644663-7	
23.77 [.936]	6	3-644663-6	
19.81 [.780]	5	3-644663-5	
15.85 [.624]	4	3-644663-4	
11.89 [.468]	3	3-644663-3	
7.92 [.312]	2	3-644663-2	
7.92 [.312]	2	3-644663-2	
47.55 [1.872]	12	1-644663-2	
43.59 [1.716]	11	1-644663-1	
39.62 [1.560]	10	1-644663-0	
35.66 [1.404]	9	644663-9	
31.70 [1.248]	8	644663-8	
27.74 [1.092]	7	644663-7	
23.77 [.936]	6	644663-6	
19.81 [.780]	5	644663-5	
15.85 [.624]	4	644663-4	
11.89 [.468]	3	644663-3	
7.92 [.312]	2	644663-2	
7.92 [.312]	2	644663-2	
DIM A		NO OF CIRCUITS	PART NO

THIS DRAWING IS A CONTROLLED DOCUMENT.		DWN D. SOLOMON 09 JAN 92	<b>TE</b> TE Connectivity	
DIMENSIONS: mm [INCHES]		CHK R. SWING 09 JAN 92		
TOLERANCES UNLESS OTHERWISE SPECIFIED:		APVD T. WERT 09 JAN 92	NAME MTA 156 CONNECTOR ASSEMBLY, 20 AWG, STANDARD	
0 PLC ± -	1 PLC ± -	PRODUCT SPEC 108-1051	SIZE A2	CAGE CODE 00779
2 PLC ± -	3 PLC ± -	APPLICATION SPEC 114-1020	DRAWING NO C=644663	RESTRICTED TO -
4 PLC ± -	ANGLES ± -	MATERIAL 1	WEIGHT -	SCALE 4:1
FINISH 1		CUSTOMER DRAWING		SHEET 1 OF 1
				REV F