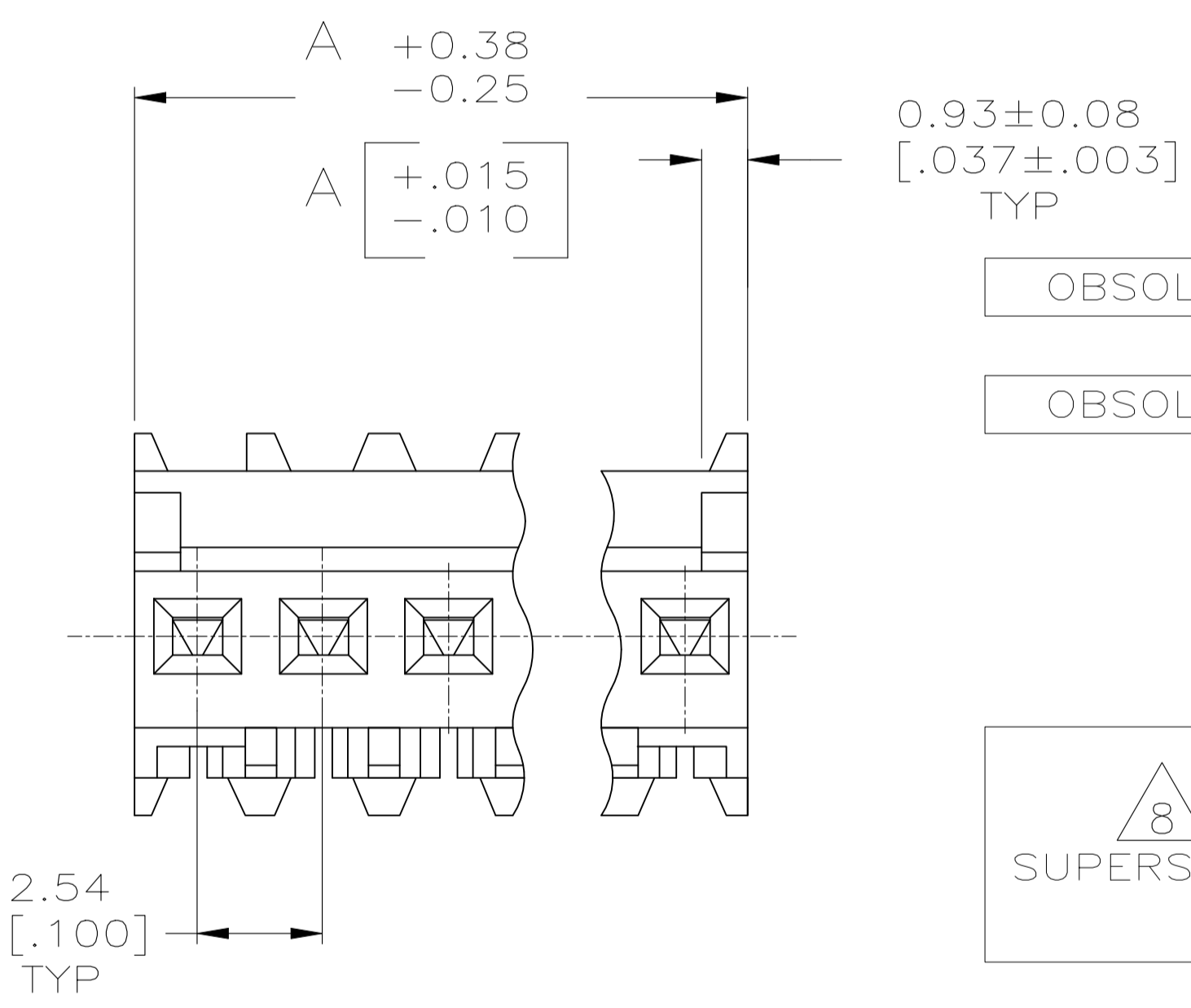
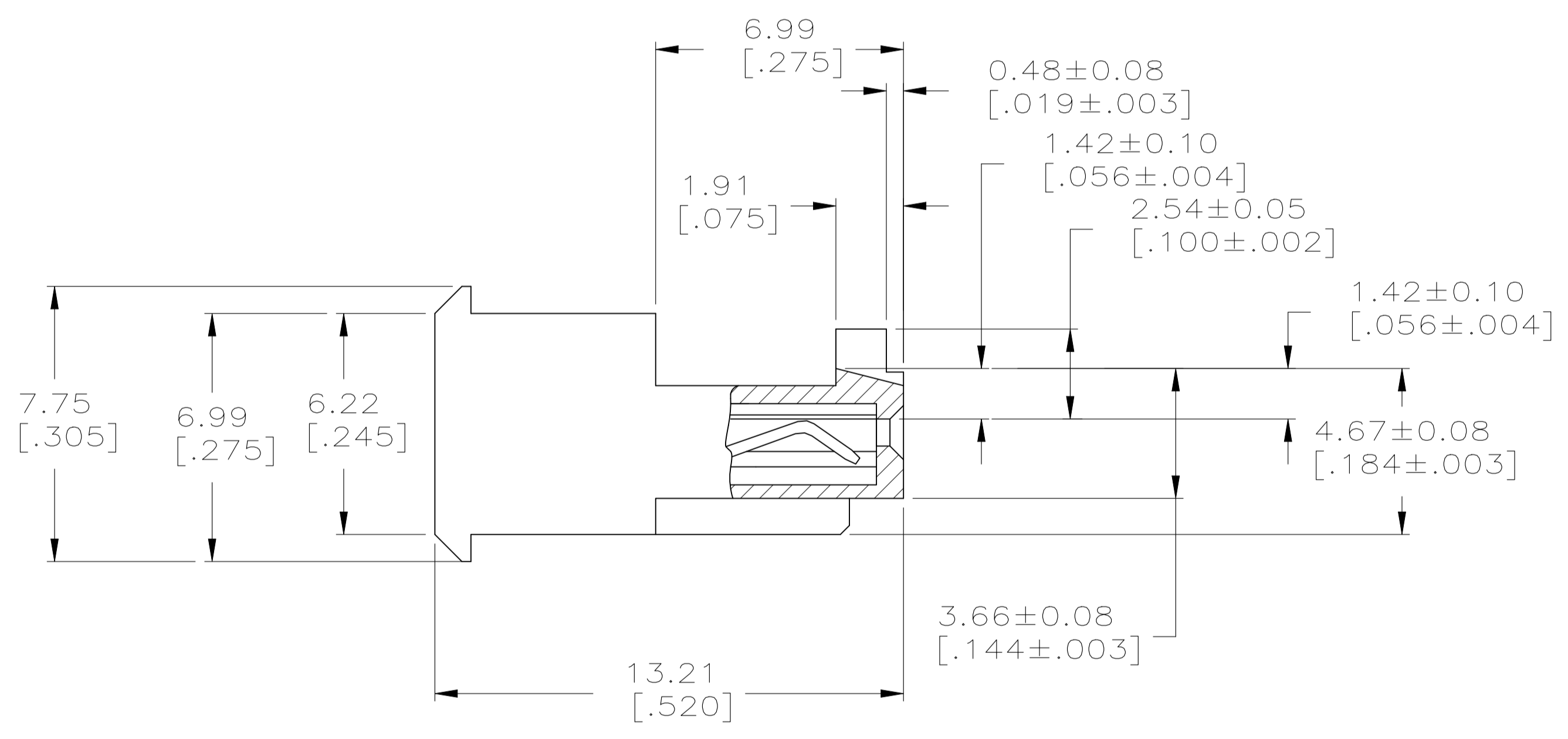
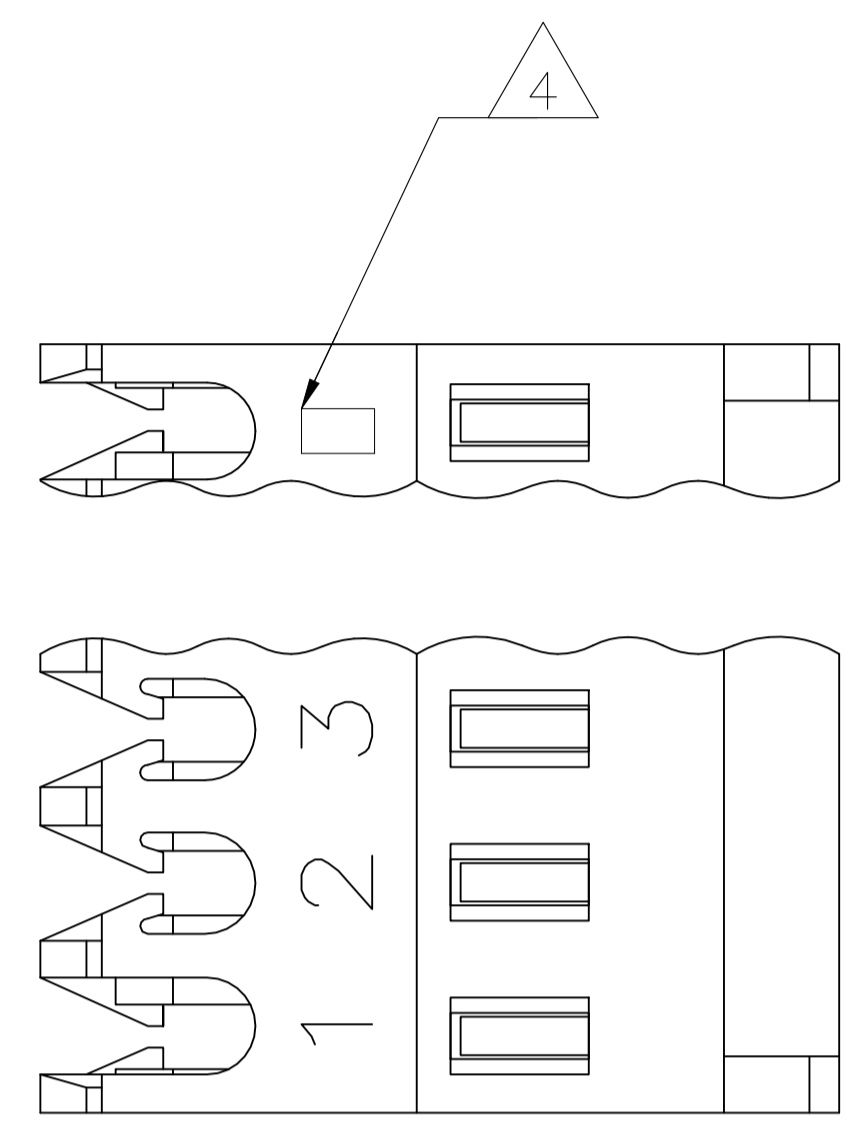


REVISIONS				
REV	DATE	DESCRIPTION	BY	APP'D
N2	06AUG2024	REVISED PER ECR-23-181719	MV	JP

- 1 MATERIAL: CONNECTOR - NYLON UL94V-2 (RED).  
CONTACTS - 0.30[.012] THICK COPPER ALLOY  
0.00076[.000030] GOLD OR 0.00076[.000030]  
TOTAL GOLD FLASH OVER PALLADIUM NICKEL.  
PER TE CONNECTIVITY'S DISCRETION, IN CONTACT AREA  
WITH MATTE TIN SLOT AREA FOR 644702-2  
THRU1-644702-6  
OR MATTE WHISKER MITIGATED TIN FOR 3-644702-2
- 2 THRU 4-644702-6 OVER NICKEL UNDERPLATE.
- 3 CONTACTS ACCEPT 22 AWG WIRE WITH 1.52 [.060] MAX INSULATION DIAMETER.
- 4 CONTACTS MUST ACCEPT 0.64±0.03 [.025±.001] SQUARE POST AND REMAIN LOCKED IN POSITION.
- 5 IDENTIFICATION NUMBER FOR LAST CIRCUIT MAY NOT APPEAR ON ALL ASSEMBLIES.
- 6 DIMENSIONS IN BRACKETS ARE IN INCHES.
- 7 HOUSING FEATURES ARE: FEED THRU WITH LOCKING RAMP AND POLARIZING TAB.
- 8 OBSOLETE PARTS: OBSOLETE CIS STREAMLINING PER D.RENAUD/D.SINISI



TIN	40.64	[1.600]	16	4-644702-6	
TIN	38.10	[1.500]	15	4-644702-5	
TIN	35.56	[1.400]	14	4-644702-4	
TIN	33.02	[1.300]	13	4-644702-3	
TIN	30.48	[1.200]	12	4-644702-2	
TIN	27.94	[1.100]	11	4-644702-1	
TIN	25.40	[1.000]	10	4-644702-0	
OBSOLETE	TIN	22.86	[.900]	9	3-644702-9
OBSOLETE	TIN	20.32	[.800]	8	3-644702-8
	TIN	17.78	[.700]	7	3-644702-7
	TIN	15.24	[.600]	6	3-644702-6
	TIN	12.70	[.500]	5	3-644702-5
	TIN	10.16	[.400]	4	3-644702-4
	TIN	7.62	[.300]	3	3-644702-3
	TIN	5.08	[.200]	2	3-644702-2
8 SUPERSEDED	TIN-LEAD	40.64	[1.600]	16	1-644702-6
	TIN-LEAD	38.10	[1.500]	15	1-644702-5
	TIN-LEAD	35.56	[1.400]	14	1-644702-4
	TIN-LEAD	33.02	[1.300]	13	1-644702-3
	TIN	30.48	[1.200]	12	1-644702-2
8 SUPERSEDED	TIN-LEAD	27.94	[1.100]	11	1-644702-1
	TIN	25.40	[1.000]	10	1-644702-0
OBSOLETE	TIN	22.86	[.900]	9	644702-9
	TIN	20.32	[.800]	8	644702-8
	TIN	17.78	[.700]	7	644702-7
8 SUPERSEDED	TIN-LEAD	15.24	[.600]	6	644702-6
	TIN-LEAD	12.70	[.500]	5	644702-5
	TIN-LEAD	10.16	[.400]	4	644702-4
	TIN-LEAD	7.62	[.300]	3	644702-3
	TIN	5.08	[.200]	2	644702-2
FINISH	DIM A	NO.OF POSN	ASSEMBLY		

THIS DRAWING IS A CONTROLLED DOCUMENT.

DIMENSIONS: mm [INCHES]	TOLERANCES UNLESS OTHERWISE SPECIFIED:	DIN S. HOOVER 28-DEC-2004	TE Connectivity
0. PLC ±	1. PLC ±	CHK: D. BOSSI 28-DEC-2004	NAME: MTA .100 CONNECTOR ASSEMBLY, 22 AWG, STANDARD
2. PLC ±	3. PLC ± 0.13 [.005]	APP'D: D. BOSSI 28-DEC-2004	PRODUCT SPEC: 108-1050
4. PLC ±	ANGLES ±	APPLICATION SPEC: 114-1019	SIZE: A1
MATERIAL: 1	FINISH: 1	WEIGHT: --	DRAWING NO: 00779
CUSTOMER DRAWING		SCALE: 8:1	SHEET 1 of 1