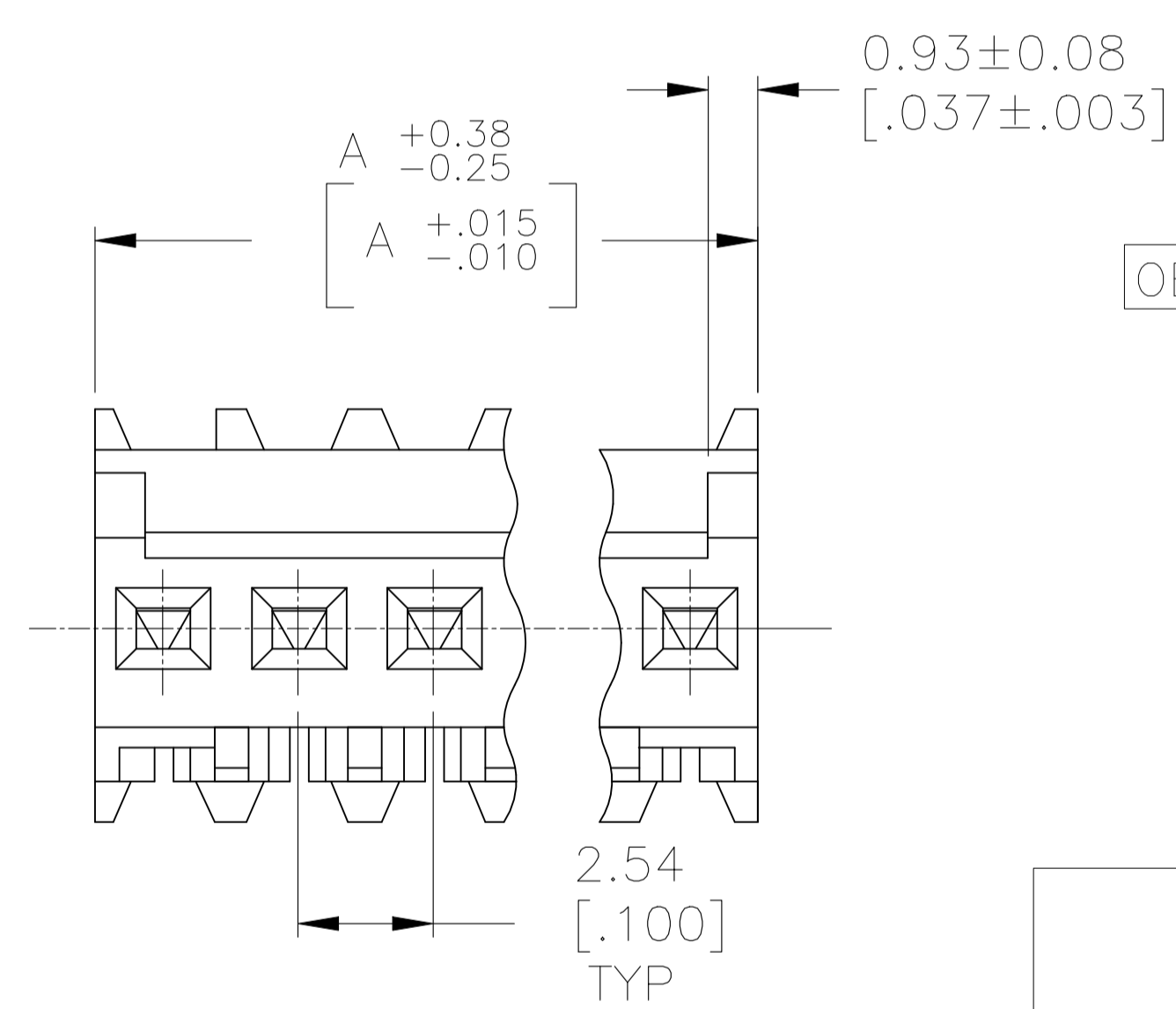
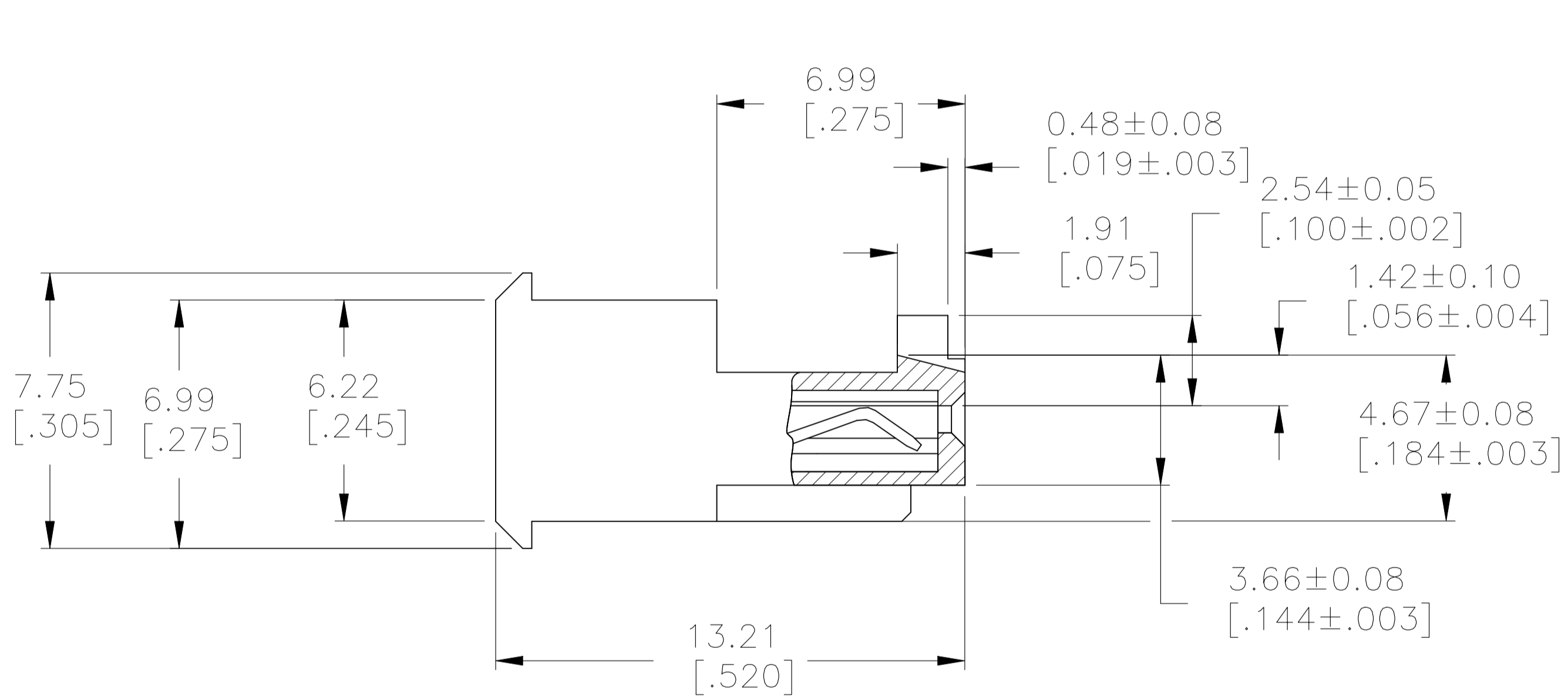
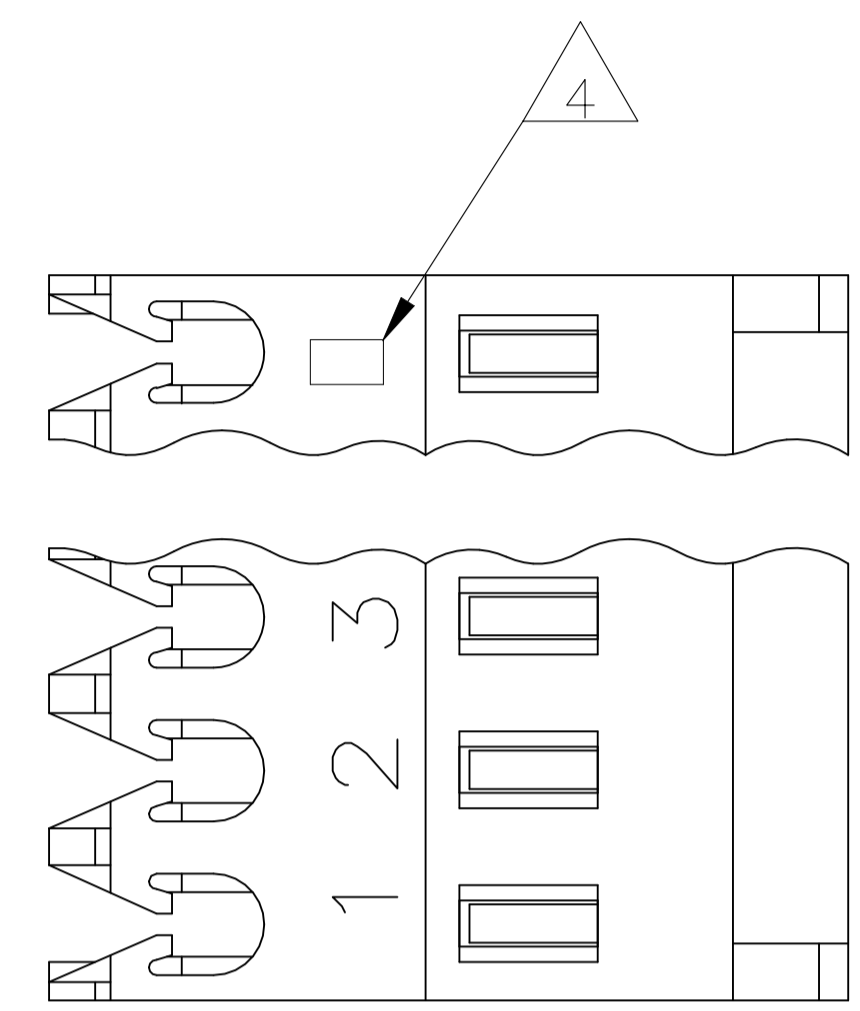


REVISIONS					
REV	DATE	DESCRIPTION	BY	CHK	APP'D
H1	29AUG2023	REVISED PER ECR-23-179060	AK	JP	

- △ MATERIAL: CONNECTOR-NYLON UL94V-2 (BLUE).
CONTACTS-0.30 [.012] THICK COPPER ALLOY
0.00076 [.000030] GOLD OR 0.00076 [.000030]
TOTAL GOLD FLASH OVER PALLADIUM NICKEL,
PER TE CONNECTIVITY'S DISCRETION, IN CONTACT
AREA WITH BRIGHT TIN-LEAD FOR 644726-2 THRU
1-644726-5, MATTE WHISKER MITIGATED TIN
FOR 3-644726-2 THRU 4-644726-5 OVER
NICKEL UNDERPLATE.
- 2 CONTACTS ACCEPT 26 AWG WIRE WITH 1.52 [.060] MAX INSULATION DIAMETER.
- 3 CONTACTS MUST ACCEPT 0.64±0.03 [.025±.001] SQUARE POST AND REMAIN LOCKED IN POSITION.
- △ IDENTIFICATION NUMBER FOR LAST CIRCUIT MAY NOT APPEAR ON ALL ASSEMBLIES.
- 5 DIMENSIONS IN BRACKETS ARE IN INCHES.
- 6 HOUSING FEATURES ARE: FEED THRU WITH LOCKING RAMP AND POLARIZING TAB.
- △ OBSOLETE PARTS: OBSOLETE CIS STREAMLINING PER D.RENAUD/D.SINISI



DIM A	NO. OF POSN	LEAD FREE	
		ASSEMBLY	ASSEMBLY
38.10 [1.500]	15	4-644726-5	1-644726-5
35.56 [1.400]	14	4-644726-4	1-644726-4
33.02 [1.300]	13	4-644726-3	1-644726-3
30.48 [1.200]	12	4-644726-2	1-644726-2
27.94 [1.100]	11	4-644726-1	1-644726-1
25.40 [1.000]	10	4-644726-0	1-644726-0
22.86 [.900]	9	3-644726-9	644726-9
20.32 [.800]	8	3-644726-8	644726-8
17.78 [.700]	7	3-644726-7	644726-7
15.24 [.600]	6	3-644726-6	644726-6
12.70 [.500]	5	3-644726-5	644726-5
10.16 [.400]	4	3-644726-4	644726-4
7.62 [.300]	3	3-644726-3	644726-3
5.08 [.200]	2	3-644726-2	644726-2
DIM A	NO. OF POSN	CONTAINS LEAD	
DIM A	NO. OF POSN	ASSEMBLY	ASSEMBLY
38.10 [1.500]	15	1-644726-5	1-644726-5
35.56 [1.400]	14	1-644726-4	1-644726-4
33.02 [1.300]	13	1-644726-3	1-644726-3
30.48 [1.200]	12	1-644726-2	1-644726-2
27.94 [1.100]	11	1-644726-1	1-644726-1
25.40 [1.000]	10	1-644726-0	1-644726-0
22.86 [.900]	9	644726-9	644726-9
20.32 [.800]	8	644726-8	644726-8
17.78 [.700]	7	644726-7	644726-7
15.24 [.600]	6	644726-6	644726-6
12.70 [.500]	5	644726-5	644726-5
10.16 [.400]	4	644726-4	644726-4
7.62 [.300]	3	644726-3	644726-3
5.08 [.200]	2	644726-2	644726-2
DIM A	NO. OF POSN	CONTAINS LEAD	
DIM A	NO. OF POSN	ASSEMBLY	ASSEMBLY

△ 7 SUPERCEDED

△ 7 SUPERCEDED

THIS DRAWING IS A CONTROLLED DOCUMENT.

DIMENSIONS: mm [INCHES]	TOLERANCES UNLESS OTHERWISE SPECIFIED:	DIN S. HOOVER 28DEC04	TE Connectivity
0. PLC ± -	1. PLC ± -	CHK: D. BOSSI 28DEC04	NAME: MTA .100 CONNECTOR ASSEMBLY, 26 AWG, STANDARD
2. PLC ± ± 0.13[.005]	3. PLC ± ± -	APP'D: D. BOSSI 28DEC04	PRODUCT SPEC: 108-1050
4. PLC ± ± -	ANGLES ± ± -	APPLICATION SPEC: 114-1019	SIZE: A1
MATERIAL: △	FINISH: △	WEIGHT: -	CAGE CODE: 00779
			DRAWING NO: 644726
			RESTRICTED TO: -
			CUSTOMER DRAWING

SCALE: 8:1 SHEET 1 OF 1 REV H1