

REVISIONS

P	LTR	DESCRIPTION	DATE	DWN	APVD
	G3	REVISED AS PER ECR-24-199424	07FEB2024	NR	JK

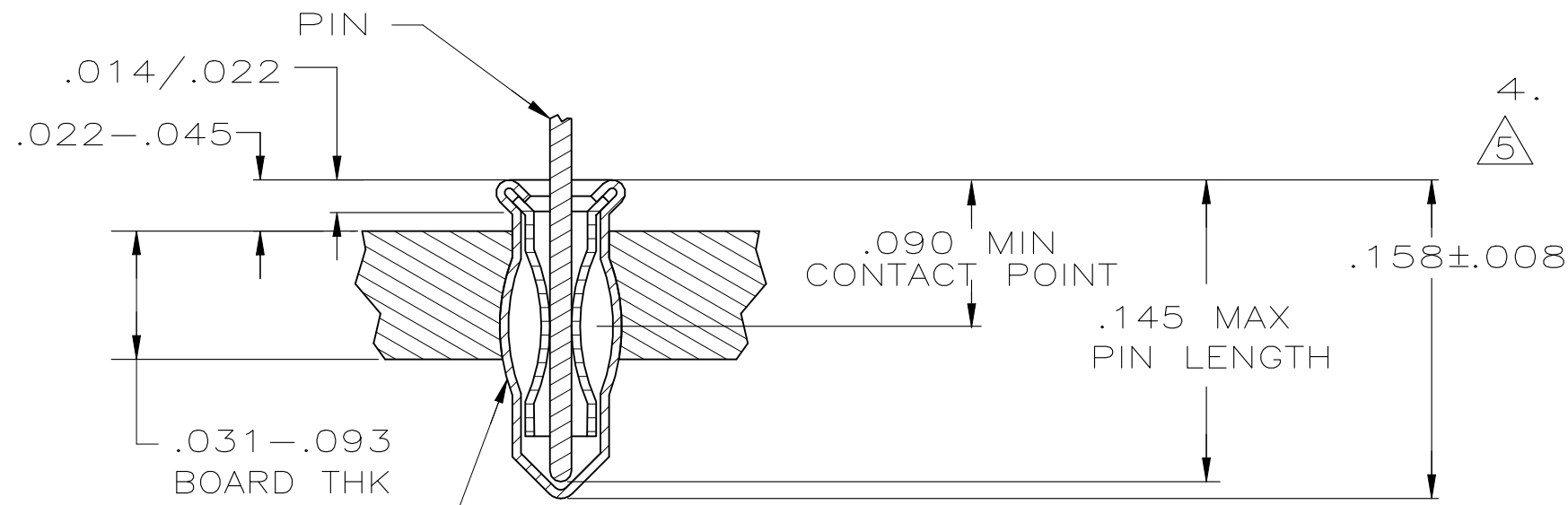
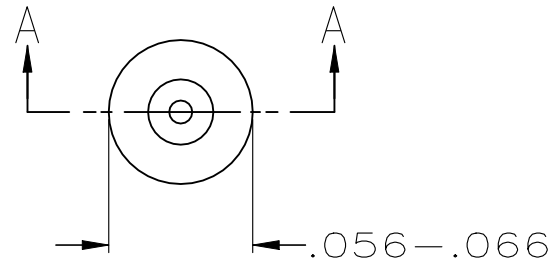
1. MATERIAL:
 EYELET - COPPER (QQ-C-576)
 SPRING - BERYLLIUM COPPER (QQ-C-533)

- △2 TIN (MIL-T-10727) .000150 MIN THK
 △3 GOLD (MIL-G-45204) .000030 MIN THK OVER NICKEL (QQ-N-290) .000011 MIN THK ON CONTACT AREA.

- △4 TO INSURE 1/2 OZ MIN RETENTION DO NOT EXCEED .004 DIFFERENCE IN PIN DIA WHEN CHANGING TO A SMALLER DIA PIN

4. HOLE SIZE FOR HAND INSERTION 0.043-0.046

- △5 TIN-LEAD PLATE .000150 MIN. THK.



INSERTION MACHINE CAPABLE OF OVALING SOCKET FOR RETENTION IN PC BOARD WITH .042±.003 DIA HOLE PRIOR TO SOLDERING OPERATION.

SECTION A-A

OBSOLETE
OBSOLETE

.090/.145	.015/.021	GOLD △3	△5	645945-7
.090/.145	.012/.018	GOLD △3	△2	645945-5
		TIN △2		645945-4
	.015/.021	GOLD △3		645945-2
		TIN △2		645945-1
LENGTH	DIA △3	SPRING	EYELET	PART NO
PIN		FINISH		
NO. 1 SERIES SHORT				

THIS DRAWING IS A CONTROLLED DOCUMENT.		DWN M. BOWERS 12-10-82	STE TE Connectivity														
DIMENSIONS: INCHES		CHK P. MUTZABAUGH 6-10-85															
TOLERANCES UNLESS OTHERWISE SPECIFIED:		APVD G.D. MILLER 6-10-85	NAME MINIATURE SPRING SOCKET ASSEMBLY														
<table border="0"> <tr><td>0 PLC</td><td>± -</td></tr> <tr><td>1 PLC</td><td>± -</td></tr> <tr><td>2 PLC</td><td>± -</td></tr> <tr><td>3 PLC</td><td>± -</td></tr> <tr><td>4 PLC</td><td>± -</td></tr> <tr><td>ANGLES</td><td>± -</td></tr> </table>		0 PLC	± -	1 PLC	± -	2 PLC	± -	3 PLC	± -	4 PLC	± -	ANGLES	± -	PRODUCT SPEC -	APPLICATION SPEC -		
0 PLC	± -																
1 PLC	± -																
2 PLC	± -																
3 PLC	± -																
4 PLC	± -																
ANGLES	± -																
MATERIAL -		FINISH -	WEIGHT 0.000000	SIZE A3	CAGE CODE 00779												
CUSTOMER DRAWING			DRAWING NO C-645945	RESTRICTED TO -													
			SCALE NTS	SHEET 1 OF 1	REV G3												