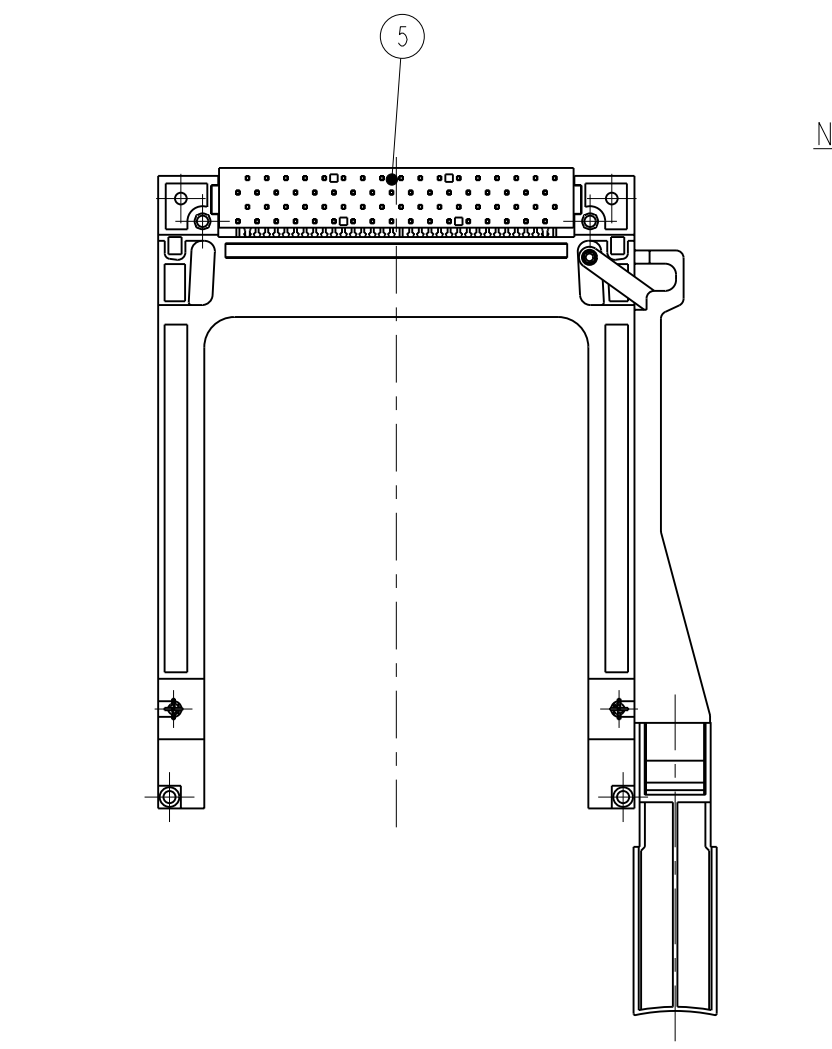
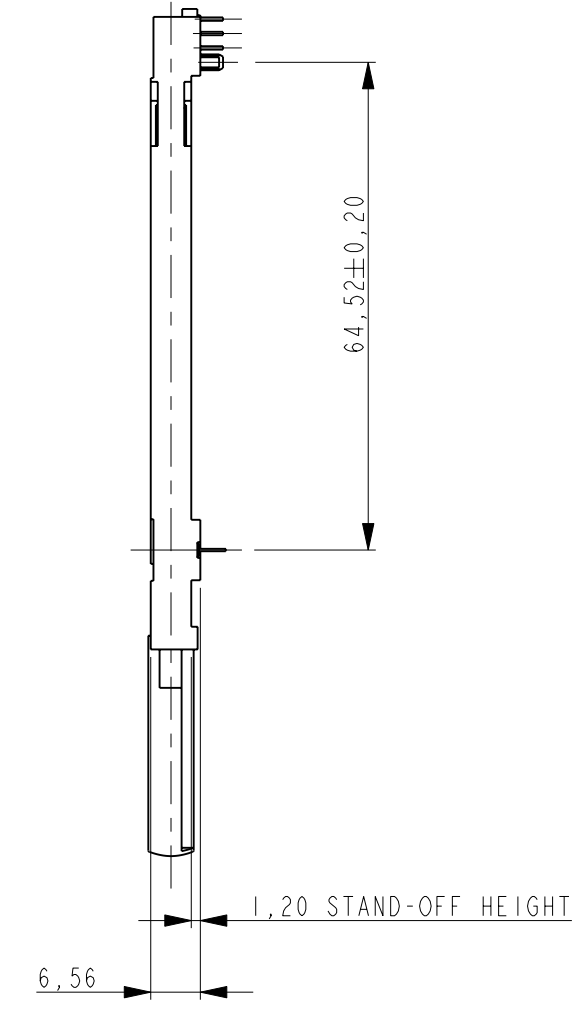
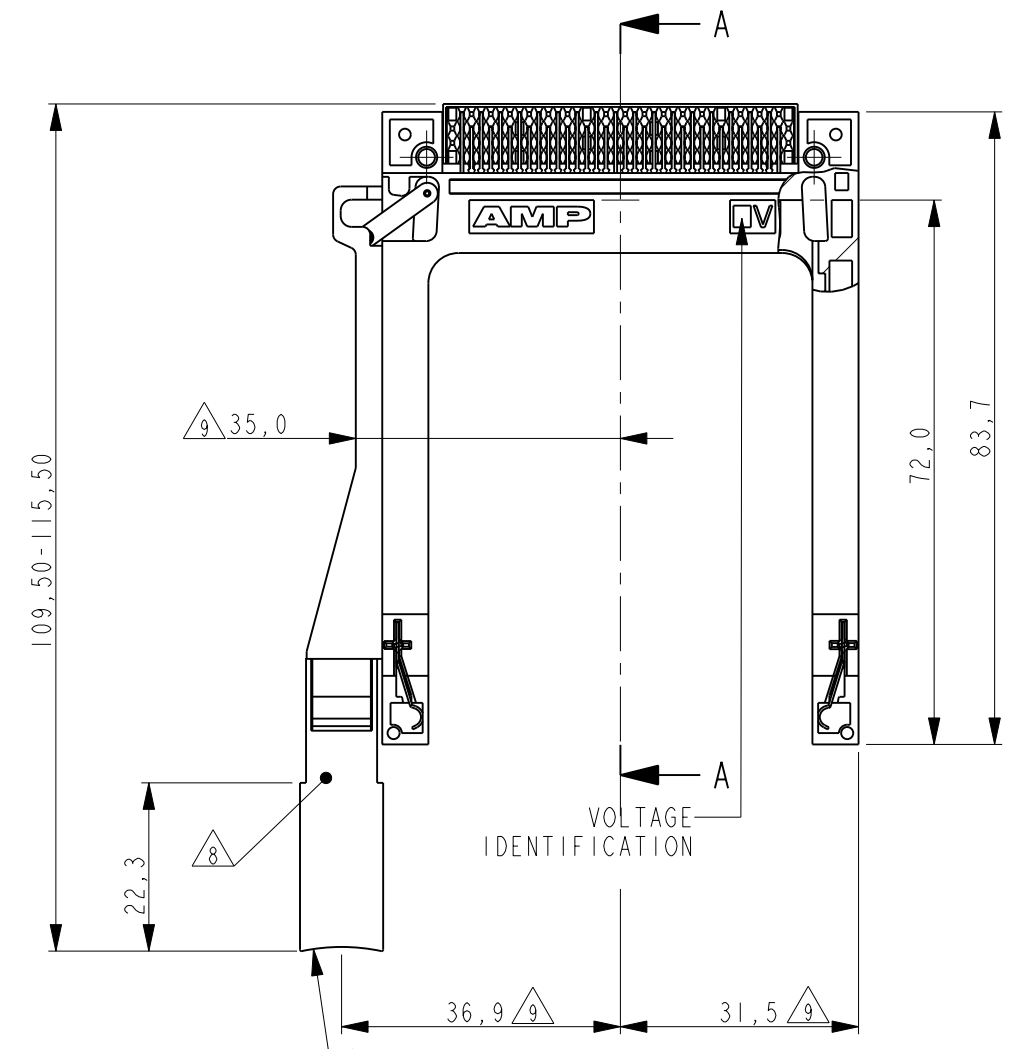


THIS DRAWING IS UNPUBLISHED. RELEASED FOR PUBLICATION
 © COPYRIGHT copyright_date ALL RIGHTS RESERVED.

LOC		DIST		REVISIONS			
P	LTR	DESCRIPTION	DATE	DWN	APVD		
	A2	ECR-11-010161	16MAY2011	GG	RRP		



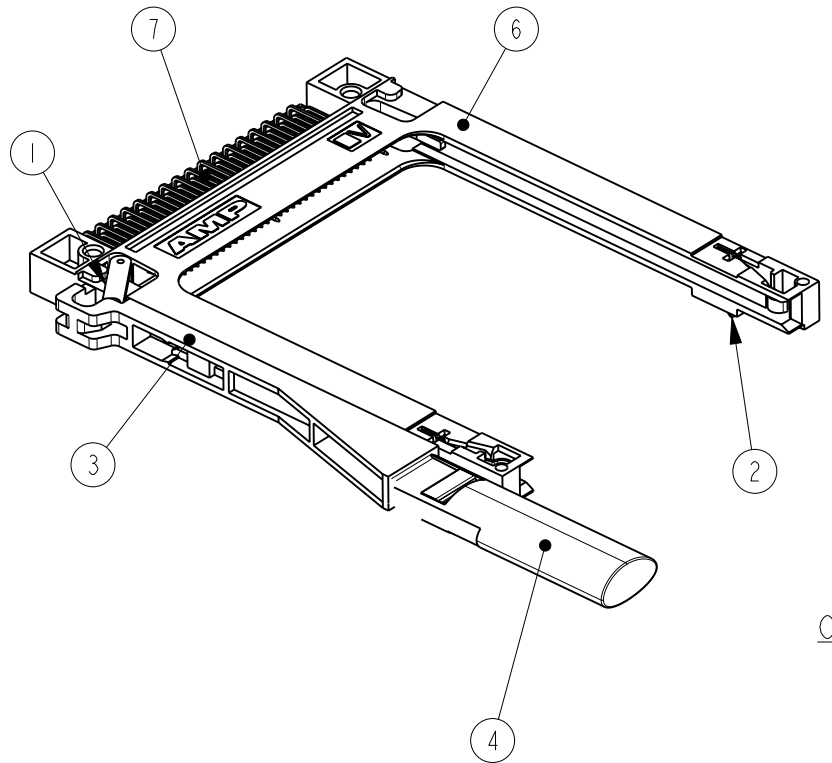
NOTES/SPECIFICATION:

- HEADER ACCEPTS TYPES I, II, & III OF PCMCIA STANDARD MEMORY CARD
- MECHANICAL SPECIFICATION:
 - DURABILITY
 - OFFICE ENVIRONMENT: 10000 CYCLES MINIMUM
 - HARSH ENVIRONMENT: 5000 CYCLES
 - CONTACT RETENTION FORCE: 1Kg MINIMUM
- ELECTRICAL SPECIFICATION:
 - CONTACT RESISTANCE: 40 MILLI OHMS MAX.
 - DIELECTRIC WITHSTANDING VOLTAGE: 500 Vrms FOR 1min.
 - INSULATION RESISTANCE: 1000 MEGA OHMS MIN.
 - CURRENT CAPACITY: 0,5 AMPS PER PIN.
- ENVIRONMENTAL SPECIFICATIONS:
 - STORAGE ENVIRONMENT: -40°C TO +70°C, 95% MAX. RELATIVE HUMIDITY (NON CONDENSING)
 - OPERATION TEMPERATURE: -20°C TO +60°C, 95% MAX. RELATIVE HUMIDITY (NON CONDENSING)
 - THERMAL SHOCK: 6 CYCLES (1 CYCLE PER HOUR) WITH CONNECTOR ENGAGED WITH EXTREMES OF -55°C TO +70°C.

5 LENGTH OF CONTACTS:

DIM "A"	POSITION No.
5	1, 17, 34, 35, 51, 68
3.5	36, 67
4.25	THE OTHERS

- 6 PLATING OF CONTACT: Ni : 1,5µm MIN. (OVERALL)
Au : 0,2µm MIN. (CARD SIDE)
TIN: 2µm MIN. (PCB SIDE)
- 7 ALL PARTS PACKAGED IN TRAYS UNLESS REQUESTED:
- 8 BUTTON TRAVEL LENGTH IS 6mm
- 9 MEASURING METHOD: MEASURE THESE DIMENSION, BY FIXING THE CONNECTOR TO THE STANDARD GAUGE.

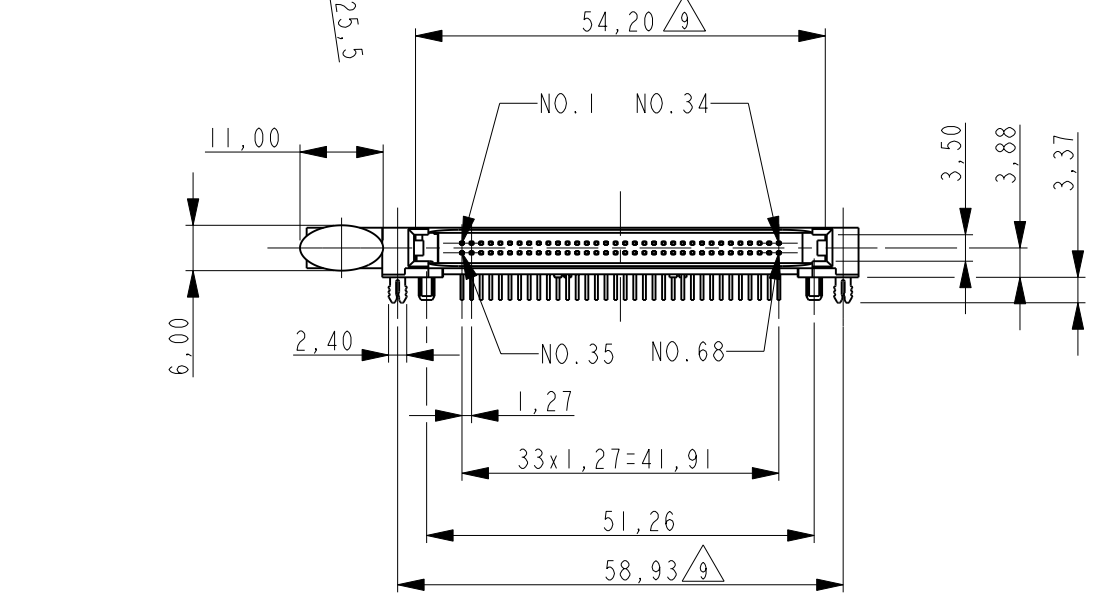


CONNECTOR TO PRINTED CIRCUIT BOARD ASSEMBLY:

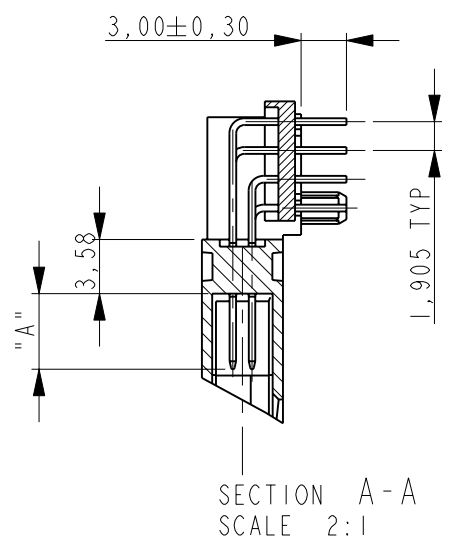
- PLACE THE CONNECTOR ON THE PRINTED CIRCUIT BOARD. THE SOLDER TAILS, RETENT CLIPS & PLASTIC LEGS SHOULD BE SEATED IN THE RESPECTIVE HOLES
- PUSH FIRMLY DOWN ON CENTER OF PLASTIC LEGS THEN SOLDER RETENTS. A SLIGHT SNAP IS FELT WHEN THE CONTACT IS FULLY SEATED.
- SOLDER PROCESS ENTIRE PRINTED CIRCUIT BOARD ASSEMBLY

VOLTAGE IDENTIFICATION	PARTNUMBER	SHAPE PUSH BUTTON	PUSH BUTTON COLOUR	PUSH BUTTON PN
3.3 V	0-6483538-2	OVAL	GREY	1377142-1
5 V	0-6483538-1	OVAL	GREY	1377142-1

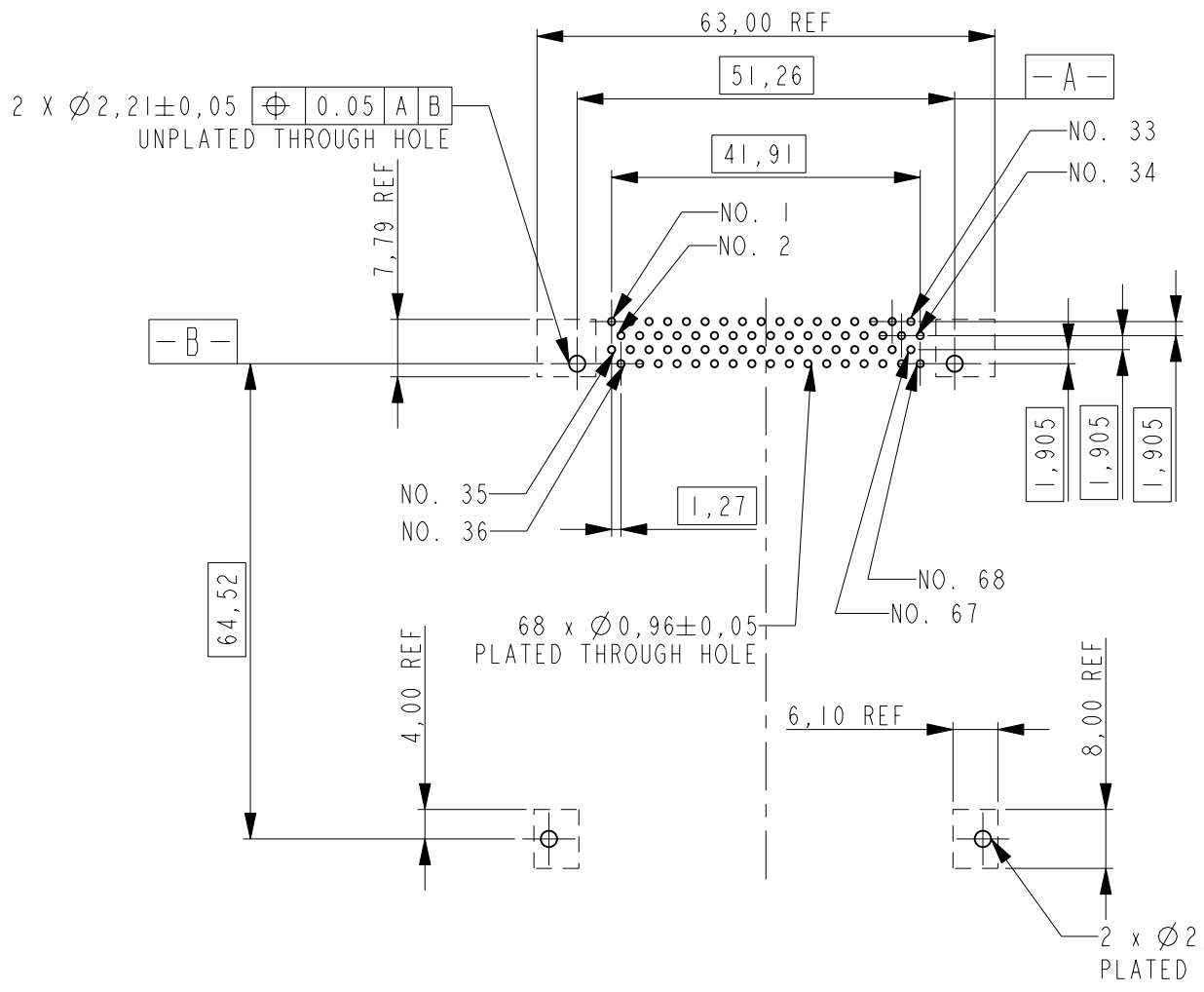
ITEM NO	QTY	DESCRIPTION	MATERIAL	FINISH
7	68	CONTACT	COPPER ALLOY	6
6	1	HOUSING	THERMOPLASTIC UL 94 VO	COLOR: BLACK
5	1	ORGANISER	THERMOPLASTIC UL 94 VO	COLOR: BLACK
4	1	PUSH BUTTON	THERMOPLASTIC UL 94 VO	SEE TABLE
3	1	ARM BAR	THERMOPLASTIC UL 94 VO	COLOR: BLACK
2	2	GROUND CONTACT	PHOSPHOR BRONZE	TIN: 2µm MIN
1	1	CAM	THERMOPLASTIC UL 94 VO	COLOR: BLACK



RECOMMENDED PCB LAYOUT
(THICKNESS: 1,60mm ±0,1mm)



SECTION A-A
SCALE 2:1



THIS DRAWING IS A CONTROLLED DOCUMENT. DWN: R.Coolen 08DEC04
 CHK: P.Willems
 APVD: J.Broeksteeg
 PRODUCT SPEC: 108-19201
 APPLICATION SPEC: -

STE TE Connectivity

NAME: PC CARD HEADER HIGH RAISED 7mm WITH LEFT EJECTOR AND PUSH BUTTON

SIZE	CAGE CODE	DRAWING NO	RESTRICTED TO
A2	00779	6483538	-

CUSTOMER DRAWING SCALE: 1:1 SHEET 1 OF 1 REV A2