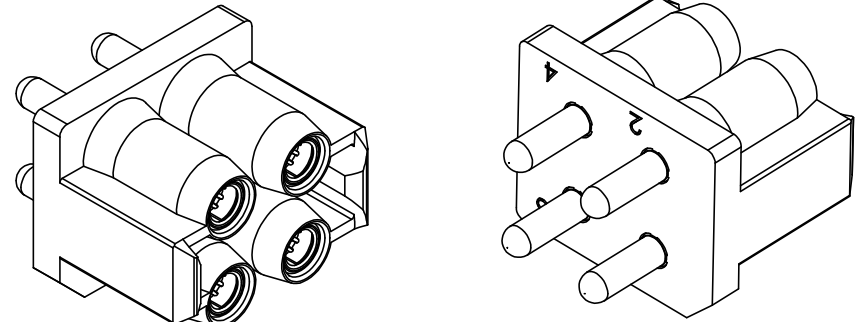
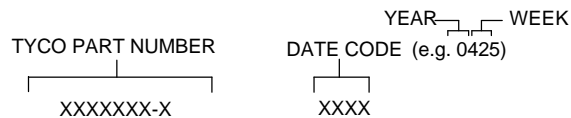


This drawing involves proprietary design rights of Tyco Electronics Corporation, and all design, manufacture, reproduction, use and sale rights regarding the same are expressly reserved. If it is submitted for a specific purpose and the recipient by accepting this drawing, assumes custody and control and agrees to take reasonable precautions: (a) that this drawing will not be copied and reproduced, in whole or in part, or its contents revealed in any manner; or to any person except to meet the purpose for which it was delivered and (b) that any special features peculiar to this design will not be incorporated in other projects without the expressed written permission of Tyco Electronics Corporation.

EC		REV	REVISIONS		DATE
CPR		A	NEW RELEASE		12/12/05



5. ITEMS PROVIDED TO THIS SPECIFICATION TO BE PERMANENTLY IDENTIFIED PER THE FOLLOWING IDENTIFIER:



4. PCB TAIL SOCKET CONTACTS ARE INSTALLED WITH THE CONNECTOR ASSEMBLY.

3. FINISHES:
SIZE #12 CONTACTS: SILVER PLATED.

2. MATERIALS:
INSULATORS: THERMOPLASTIC, GLASS REINFORCED, UL RATED 94V-0, COLOR - BLACK
PIN CONTACTS : COPPER ALLOY

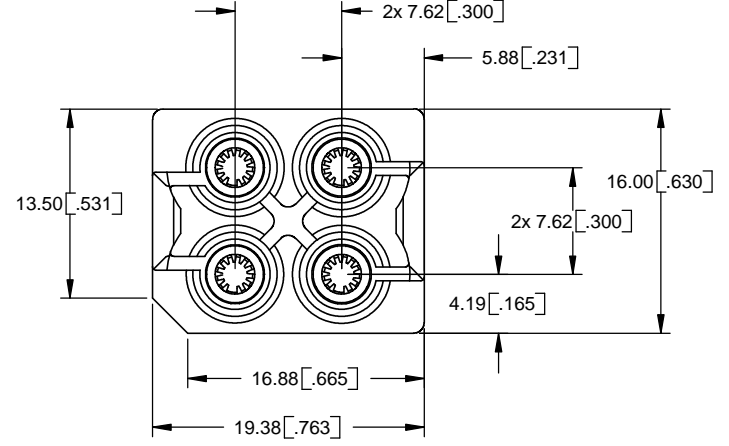
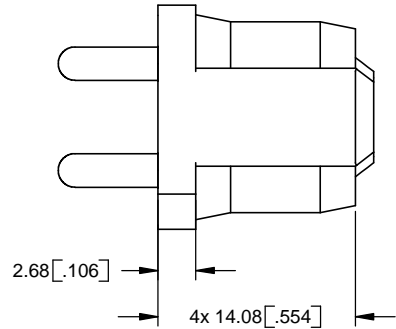
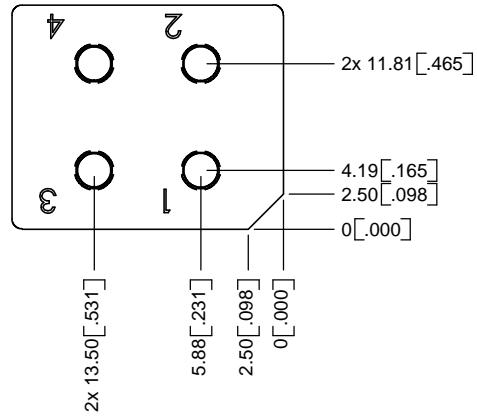
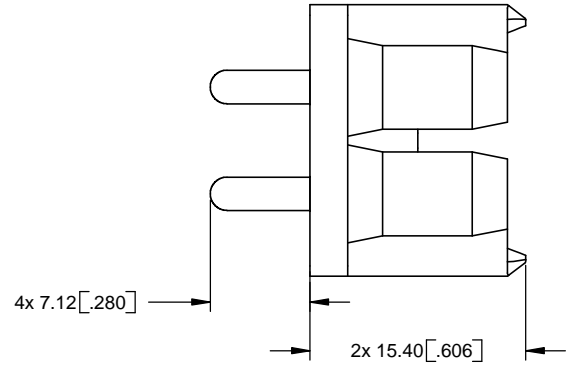
1. PART NUMBER CHANGES AND OR DESIGN CHANGES AFFECTING ITEM INTERCHANGEABILITY REQUIRE PRIOR ELCON APPROVAL AND AUTHORIZATION BY REVISION TO THIS DRAWING.

NOTES:UNLESS OTHERWISE SPECIFIED

 THIRD ANGLE PROJECTION	DRAWN	DATE	Tyco Electronics Corporation Menlo Park, CA 94025
	R. THEIN/M. ALIM	12/12/05	
	CHECKED		
	APPROVED		
UNLESS OTHERWISE SPECIFIED DIMENSIONS ARE IN METRIC [INCHES]	APPROVED		TITLE
TOLERANCES	D. CHAU	12/12/05	CONNECTOR, SOCKET, PCB TAIL CUSTOM DRAWER PN 6766015-1
ANGLES ± 2.0°	DCA APPROVED	12/12/05	SIZE DWG NUMBER
DECIMALS	M. ALIM		B C = 6766015
.XX ± 0.25 [010]	FILE NAME	SC6766015A.SLDDRW	REV.
.X ± 0.5 [02]	DWG SCALE: 2 = 1		A
	SH 1 OF 3		

This drawing involves proprietary design rights of Tyco Electronics Corporation, and all design, manufacture, reproduction, use and sale rights regarding the same are expressly reserved. If it is submitted for a specific purpose and the recipient by accepting this drawing, assumes custody and control and agrees to take reasonable precautions, (a) that this drawing will not be copied and reproduced, in whole or in part, or its contents revealed in any manner, or to any person except to meet the purpose for which it was delivered and (b) that any special features peculiar to this design will not be incorporated in other projects without the expressed written permission of Tyco Electronics Corporation.

EC		REV	REVISIONS		DATE
			DESCRIPTION		
			SEE SHEET 1		



**SUGGESTED PCB LAYOUT FOR SOCKET CONNECTOR
(VIEW FROM BACK OF BOARD)**

HOLE SIZE: $\phi .102" \pm .003"$



UNLESS OTHERWISE SPECIFIED DIMENSIONS ARE IN METRIC [INCHES]

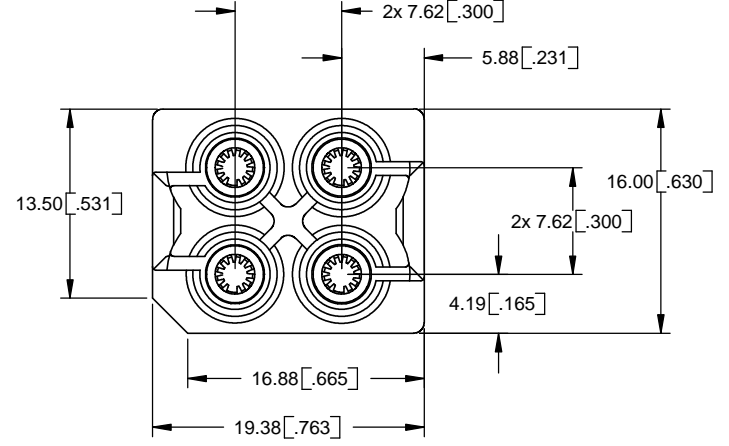
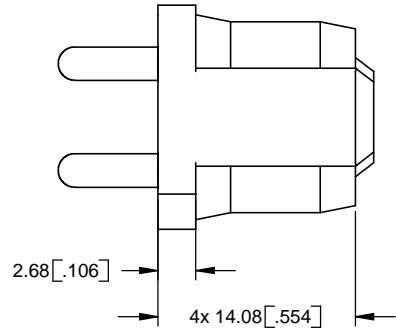
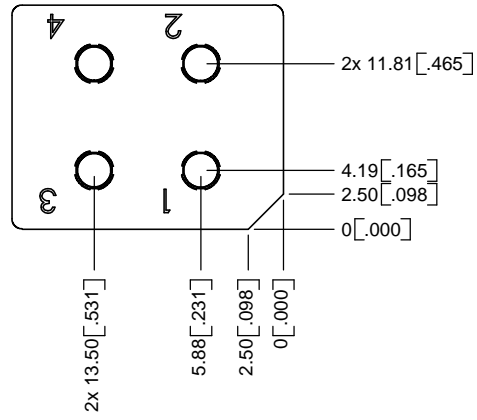
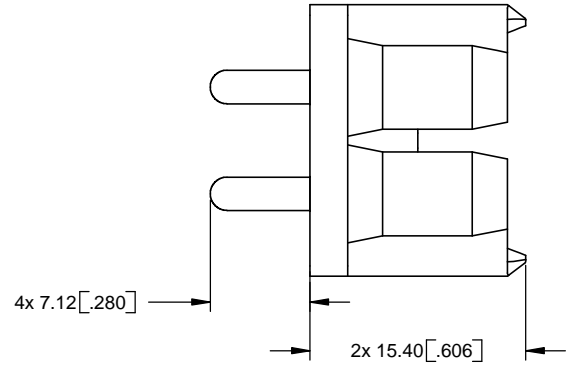
TOLERANCES
 ANGLES $\pm 2.0^\circ$
 DECIMALS
 .XX $\pm 0.25 [010]$
 .X $\pm 0.5 [02]$

DRAWN R. THEIN/M. ALIM	DATE 12/12/05
CHECKED	
APPROVED	
APPROVED D. CHAU	12/12/05
DCA APPROVED M. ALIM	12/12/05
FILE NAME SC6766015A.SLDDRW	

Tyco Electronics Corporation Menlo Park, CA 94025			
TITLE CONNECTOR, SOCKET, PCB TAIL CUSTOM DRAWER PN 6766015-1			
SIZE B	DWG NUMBER C = 6766015	REV. A	
DWG SCALE: 2 = 1		SH 2 OF 3	

This drawing involves proprietary design rights of Tyco Electronics Corporation, and all design, manufacture, reproduction, use and sale rights regarding the same are expressly reserved. If it is submitted for a specific purpose and the recipient by accepting this drawing, assumes custody and control and agrees to take reasonable precautions, (a) that this drawing will not be copied and reproduced, in whole or in part, or its contents revealed in any manner, or to any person except to meet the purpose for which it was delivered and (b) that any special features peculiar to this design will not be incorporated in other projects without the expressed written permission of Tyco Electronics Corporation.

EC		REV	REVISIONS		DATE
			DESCRIPTION		
			SEE SHEET 1		



**SUGGESTED PCB LAYOUT FOR SOCKET CONNECTOR
(VIEW FROM BACK OF BOARD)**

HOLE SIZE: $\phi .102" \pm .003"$

<p>THIRD ANGLE PROJECTION</p> <p>UNLESS OTHERWISE SPECIFIED DIMENSIONS ARE IN METRIC (INCHES)</p> <p>TOLERANCES</p> <p>ANGLES $\pm 2.0^\circ$</p> <p>DECIMALS</p> <p>.XX $\pm 0.25 [010]$</p> <p>.X $\pm 0.5 [02]$</p>	DRAWN	DATE	Tyco Electronics Corporation Menlo Park, CA 94025		
	R. THEIN/M. ALIM	12/12/05			
	CHECKED		TITLE		
	APPROVED		CONNECTOR, SOCKET, PCB TAIL CUSTOM DRAWER PN 6766015-1		
APPROVED	D. CHAU	12/12/05	SIZE	DWG NUMBER	REV.
DCA APPROVED	M. ALIM	12/12/05	B	C = 6766015	A
FILE NAME	SC6766015A.SLDDRW		DWG SCALE:	2 = 1 SH 3 OF 3	