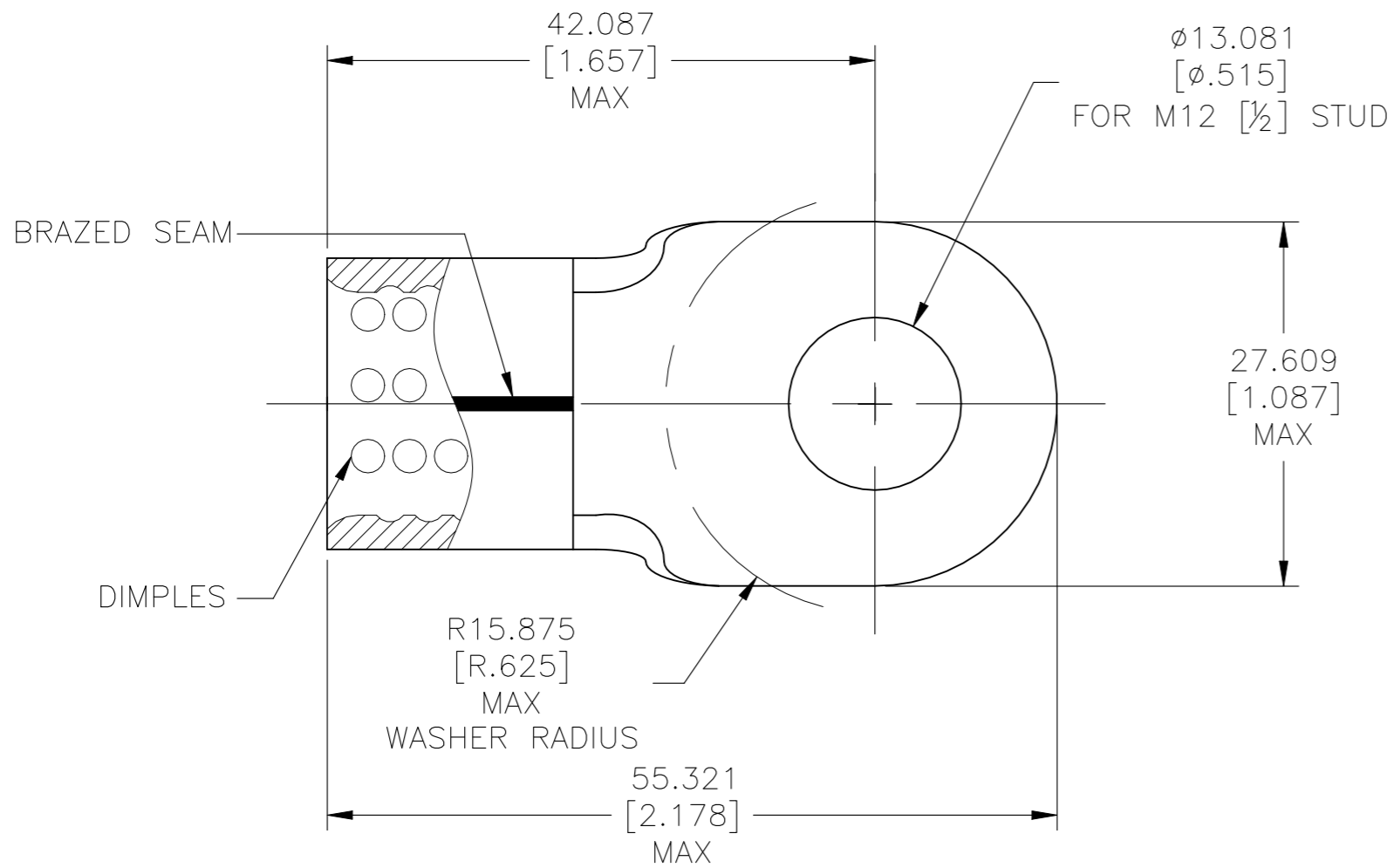


REVISIONS

| P | LTR | DESCRIPTION | DATE | DWN | APVD |
|---|-----|---------------------------|-----------|-----|------|
| | B | REVISED PER ECO-19-009164 | 24JUN2020 | SJ | DR |



1. WIRE RANGE IS FOR 4/0 AWG. STANDARD WIRE CROSS SECTIONAL AREA RANGE: 190,000-231,100 CMA, STRANDED WIRE
 2. TERMINAL BODY MATERIAL THK IS 2.590±0.076[.102±.003]
 3. RECOMMENDED OPERATING TEMP -55°C(-67°F) TO +200°C(392°F) FOR HEAT SHRINK TUBING.
 4. HEAT SHRINK TUBING SHELF LIFE OF 18 MONTHS FROM DATE CODE ON LABEL.
- △ 5. TERMINAL APPLICATION SPECIFICATION 114-2162

| | | |
|----|-------------|--|
| 1 | 1-1197706-9 | HIGH AND LOW TEMPERATURE CROSS LINKED FLUOROPOLYMER HEAT SHRINK TUBING 25.40[1.00] MIN ID X 50.80±3.05[2.00±.12] RT555-1-0-SP |
| 1 | 321880-1 | TERMINAL BODY: COPPER PER ASTM B152 ANNEALED FINISH: NICKEL PLATE 0.00762[.000300] MIN EXT THK PER SAE AMS QQ-N-290 |
| -1 | PART NO | DESCRIPTION |

| | | | | | | | | | | | | | | | | | |
|--|---------------------|------------------------------|---|--------------------|------------------------|-------|-----|-------|----------------|-------|-----|--------|------|-------------------|-------------------------|--|--|
| THIS DRAWING IS A CONTROLLED DOCUMENT. | | DWN JR RUTH 10DEC09 | TE Connectivity | | | | | | | | | | | | | | |
| DIMENSIONS: mm [INCHES] | | CHK MJ SPICER 10DEC09 | | | | NAME | | | | | | | | | | | |
| TOLERANCES UNLESS OTHERWISE SPECIFIED: | | APVD MJ SPICER 10DEC09 | HEAT RESISTANT TERMINAL KIT WIRE SIZE: 4/0 AWG | | | | | | | | | | | | | | |
| <table border="0"> <tr> <td>0 PLC</td> <td>± -</td> </tr> <tr> <td>1 PLC</td> <td>± -</td> </tr> <tr> <td>2 PLC</td> <td>± -</td> </tr> <tr> <td>3 PLC</td> <td>± 0.127 [.005]</td> </tr> <tr> <td>4 PLC</td> <td>± -</td> </tr> <tr> <td>ANGLES</td> <td>± 1°</td> </tr> </table> | | 0 PLC | ± - | 1 PLC | ± - | 2 PLC | ± - | 3 PLC | ± 0.127 [.005] | 4 PLC | ± - | ANGLES | ± 1° | PRODUCT SPEC - | APPLICATION SPEC △ 5 | | |
| 0 PLC | ± - | | | | | | | | | | | | | | | | |
| 1 PLC | ± - | | | | | | | | | | | | | | | | |
| 2 PLC | ± - | | | | | | | | | | | | | | | | |
| 3 PLC | ± 0.127 [.005] | | | | | | | | | | | | | | | | |
| 4 PLC | ± - | | | | | | | | | | | | | | | | |
| ANGLES | ± 1° | | | | | | | | | | | | | | | | |
| MATERIAL SEE TABLE | FINISH SEE TABLE | WEIGHT - | SIZE A3 | CAGE CODE 00779 | DRAWING NO C-696657 | | | | | | | | | | | | |
| CUSTOMER DRAWING | | | SCALE 3:1 | SHEET 1 OF 1 | REV B | | | | | | | | | | | | |