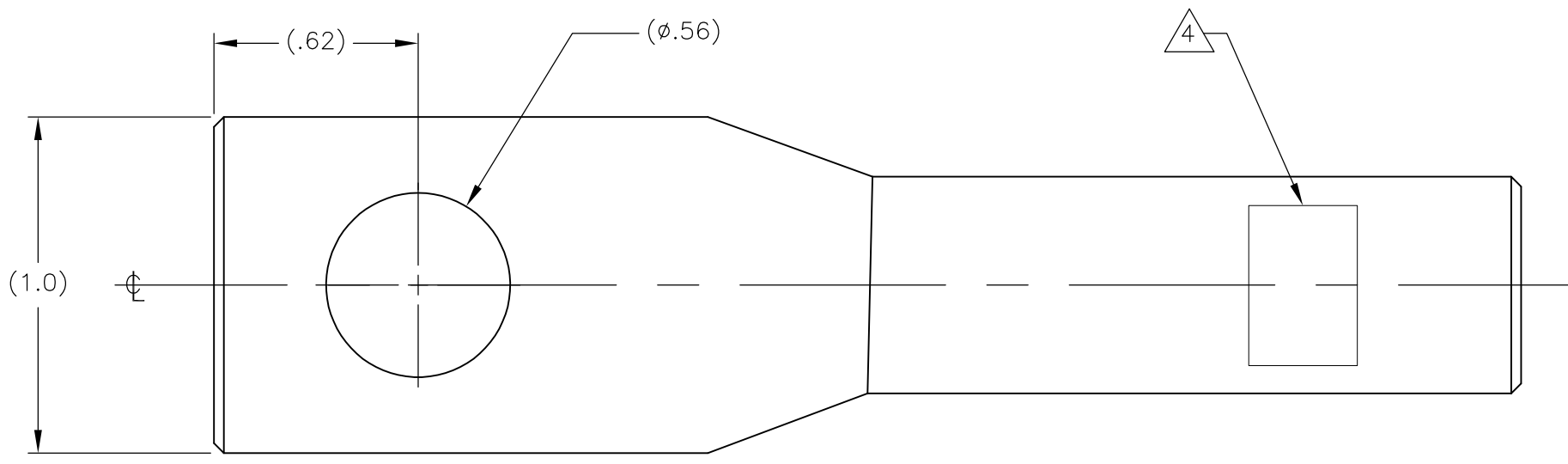

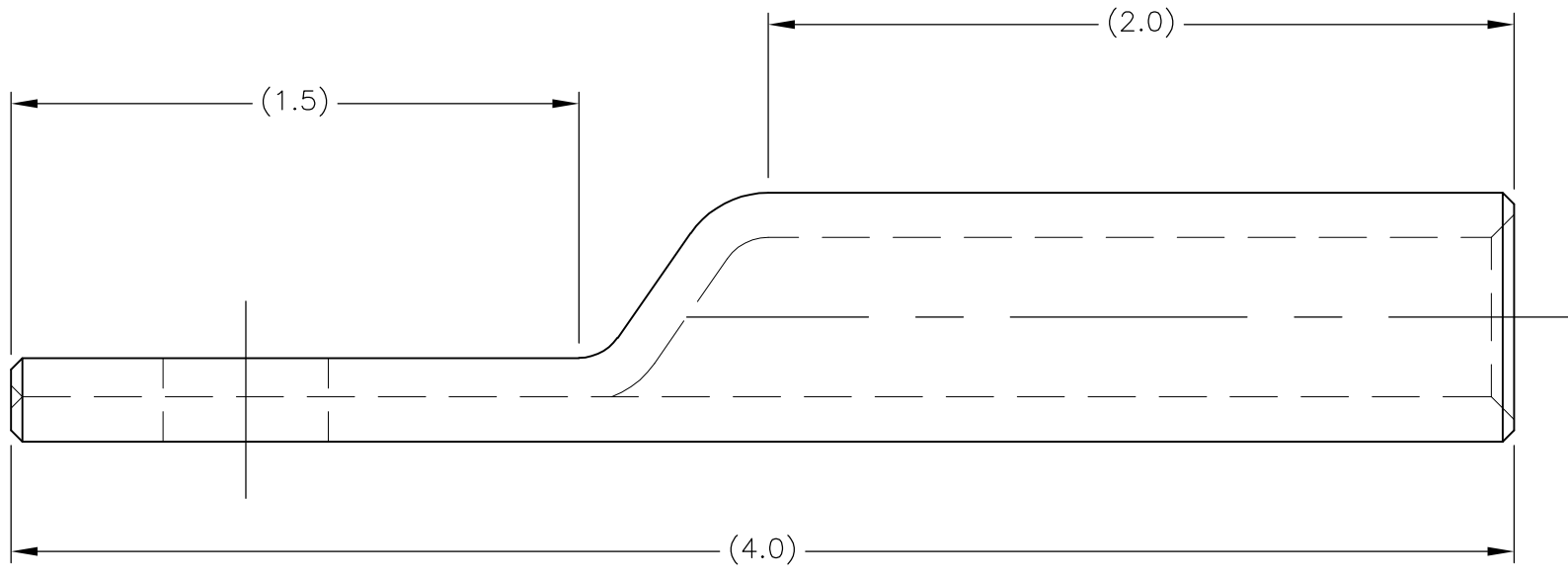


THIS DRAWING IS UNPUBLISHED. RELEASED FOR PUBLICATION  
 © COPYRIGHT 7-1199020-BY TYCO ELECTRONICS CORPORATION. ALL RIGHTS RESERVED.


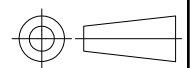
LOC	DIST	REVISIONS					
GA	1	P	LTR	DESCRIPTION	DATE	DWN	APVD
			C	LC20-0224-08 / ECO-08-024935	10OCT2008	DM	BJ



- 1 MATERIAL:  
ETP COPPER ALLOY C11000
- 2. HARDNESS:  
SOFT TEMPERED
- 3 FINISH:  
ELECTRO TIN PLATE
- 4 LETTERING STAMPED .12 MIN HIGH TO READ:  
  
 CKLL10NTN  
 1/0 AWG  
 CSA 22 CU [D/C]
- 5. ACCOMMODATES:  
1/0 AWG (φ.373) COPPER CABLE



L877	9991	CKLL10NTN	7-1199020-4
O.H. SPEC.	H.O. NO.	CATALOG NO.	PART NO.

THIS DRAWING IS A CONTROLLED DOCUMENT.		DWN	11 JUL 03		 Tyco Electronics Corporation Markham, ON L3R 1E1	
DIMENSIONS: INCHES		CHK	14 JUL 04			
		APVD	14 JUL 03			
TOLERANCES UNLESS OTHERWISE SPECIFIED: 0 PLC ± 1 PLC ± 2 PLC ± 3 PLC ± 4 PLC ± ANGLES ±		NAME	B JOHNSON			
MATERIAL	FINISH	PRODUCT SPEC	COMPRESSION TERMINAL, COPPER, ONE HOLE PAD, 1/0 AWG COPPER CABLE			
1	3	APPLICATION SPEC	SIZE	CAGE CODE	DRAWING NO	RESTRICTED TO
		WEIGHT	A3	00779	7-1199020-4	
CUSTOMER DRAWING			SCALE	SHEET	REV	
			NTS	1 OF 1	C	