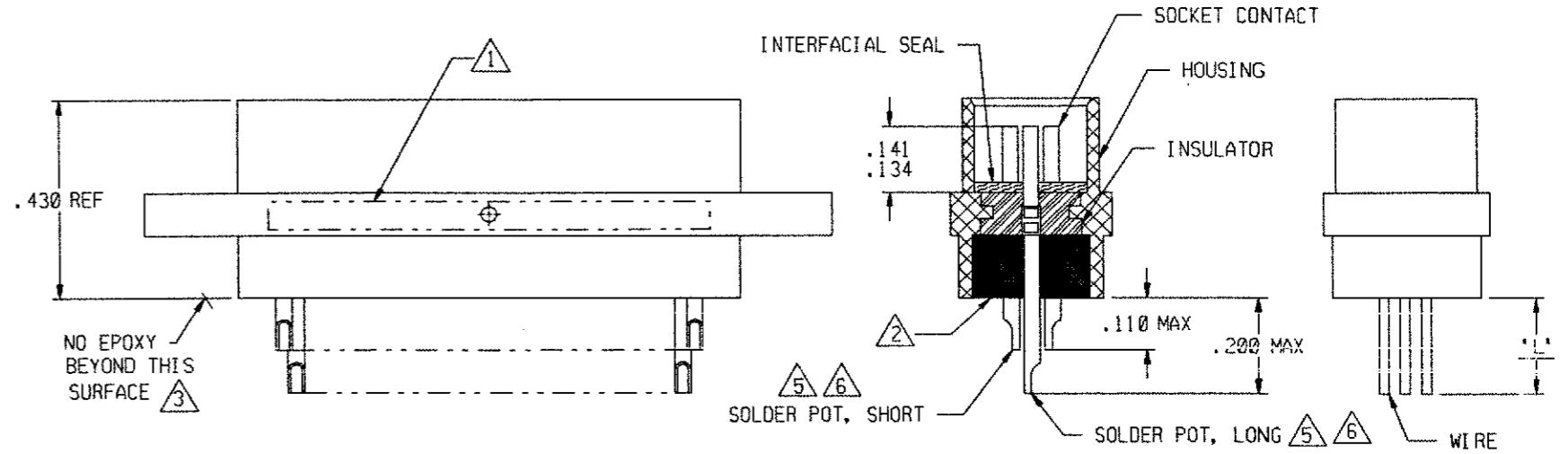
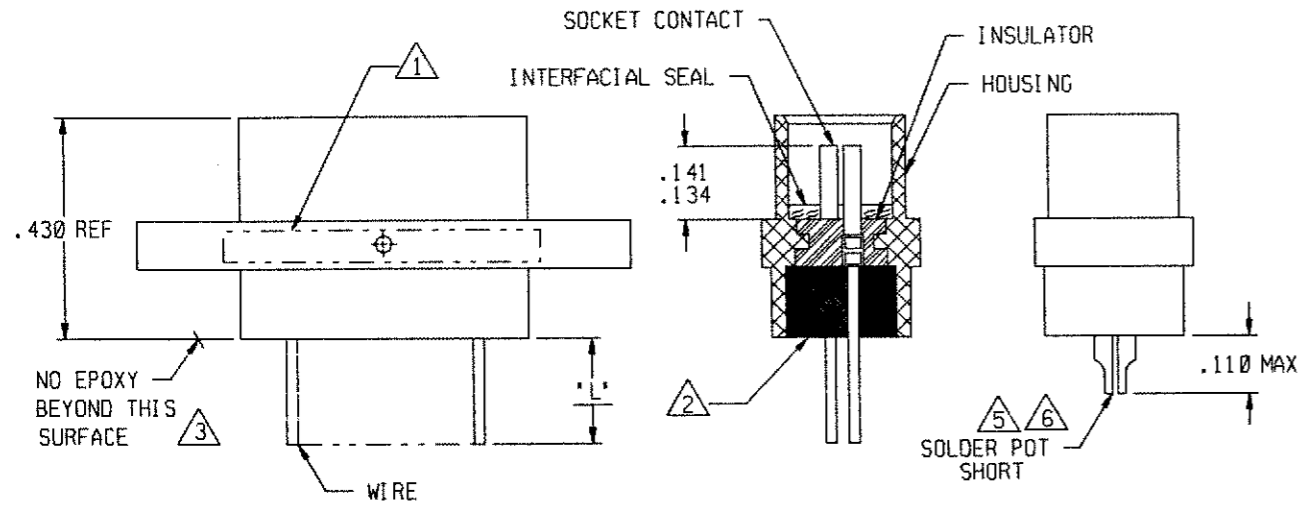
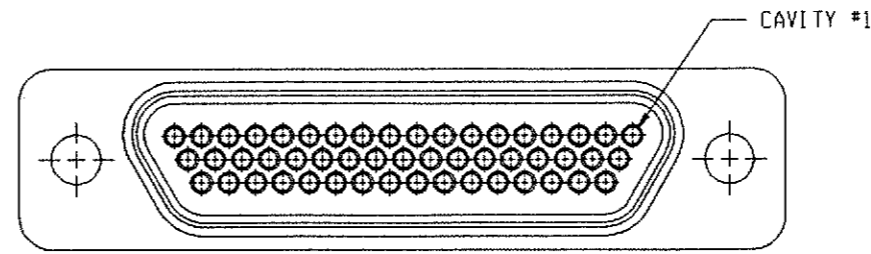
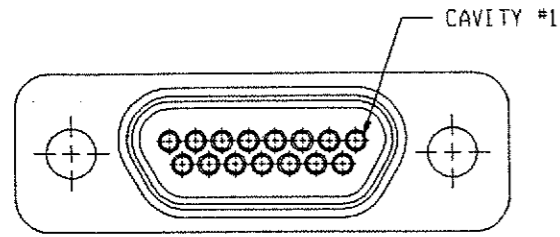


REVISION					
ZONE	LTR	ECN	DESCRIPTION	DATE	APPROVED
	D1		REVISED PER ECO-11-005139	28MAR11	HMR



**9 THRU 37 CONFIGURATION**

(SHOWN WITH WIRE TERMINATIONS FOR REFERENCE ONLY.  
SOLDER POT TERMINATIONS ARE THE SAME CONFIGURATION)

**51 CONFIGURATION**

(SHOWN WITH SOLDER POT TERMINATIONS FOR REFERENCE ONLY.  
WIRE TERMINATIONS ARE THE SAME CONFIGURATION)

NOTES: UNLESS OTHERWISE SPECIFIED.

- 1 MARK PER TIS.
- 2 EPOXY AS SHOWN USE 194-8102-6215/6225.
- 3 EPOXY WICKING: UNINSULATED WIRE: .050 MAX  
INSULATED WIRE UPTO #25 AWG: .125 MAX  
INSULATED WIRE UPTO #24 AWG OR LARGER: .200 MAX
- 4. CRIMP LEADS INTO CONTACTS PER MEP302-05.
- 5 NO SCRATCHES SHOWING BASE METAL PERMITTED ON SOLDER POTS.
- 6 CHAMFER ON SOLDER POTS ARE TO BE PARALLEL WITH SIDES OF CONNECTOR WITHIN 10°.

TE CONNECTIVITY Dwg 7-1532141-3  
Micro P/N 094-0000-0012

UNLESS OTHERWISE SPECIFIED DIMENSIONS ARE IN INCHES. TOLERANCE ARE:		APPROVALS		TE Connectivity	METAL SHELL 'D' CONNECTOR RCPT, PER MIL-PRF-83513 SIZE 9 THRU 51	PRD CODE 845 CODE M	
FRACTIONS ± 1/8	DECIMALS .XX ± .01 .XXX ± .005	ANGLES ± 2°	SIGNATURE				DATE
MATERIAL:			P.E.				
FINISH:			H.E.				
			DRAWN BY	DATE			
			P.A.				
				SIZE	CODE	IDENT NO.	DRAWING NO.
				B	98278		7-1532141-3
				SCALE: NONE			SHEET 1 OF 1