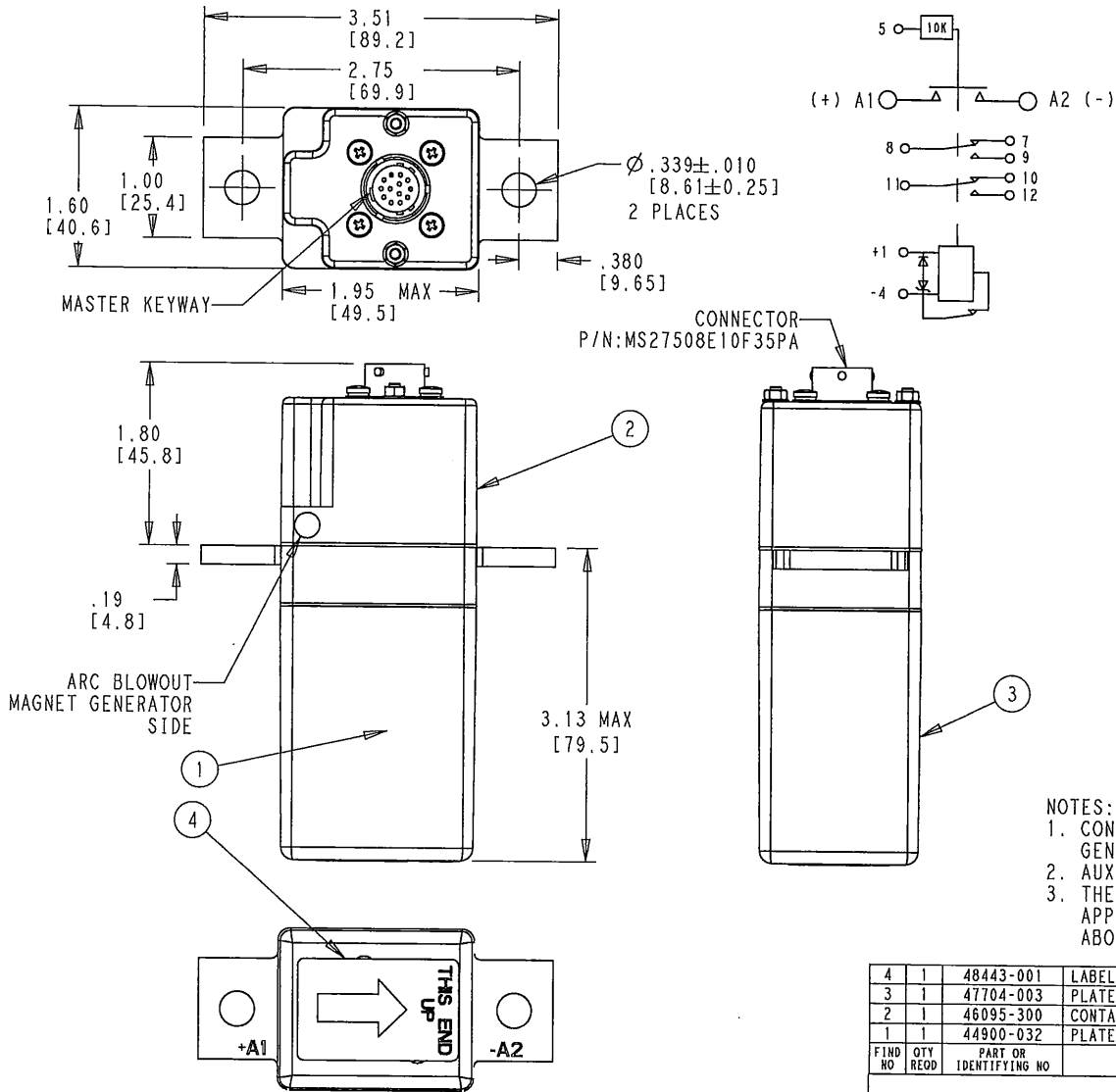


USED ON

DWG NO 7-2252003-3
THIS DRAWING IS A CONTROLLED DOCUMENT



CONSTRUCTION		GASKET SEALED
MAIN CONTACTS CONFIGURATION		SPST N.O. (DOUBLE BREAK)
VOLTAGE		28VDC
CURRENT		RESISTIVE 500 AMPS
RUPTURE		5000 AMPS
OVERLOAD		750 AMPS 5 MINUTES
ARC BREAK/BLOWOUT		1100 AMPS 20 SECONDS
		110 VDC @ 1000 AMPS
AUXILIARY CONTACTS CONFIGURATION		2PDT (FORM C)
VOLTAGE		28 VDC
CURRENT		RESISTIVE 5 AMPS
INDUCTIVE LAMP		2 AMPS
LOW LEVEL		1 AMP
COIL DATA		1 mA AT 28 VDC (SEE NOTE 3)
DUTY CYCLE		CONTINUOUS (ECONOMIZED)
MAX. OPERATE VOLTAGE		32.5 VDC
NOM. OPERATE VOLTAGE		28 VDC
PICKUP VOLTAGE		17 VDC @ 25°C
		22 VDC @ 85°C
DROPOUT VOLTAGE SUPPRESSION		1.5-7 VDC
COIL CURRENT		±42 VOLTS
INRUSH		5.5 AMPS MAX AT 28 VDC, 25°C
HOLD		400 mA MAX AT 28 VDC, 25°C
OPERATING CHARACTERISTICS		
OPERATE TIME		35 MILLISECONDS MAX.
RELEASE TIME		20 MILLISECONDS MAX.
ENVIRONMENTAL DATA		
TEMPERATURE		-55 TO 85°C
ALTITUDE		55,000 FT
LIFE ELECTRICAL		50,000 CYCLES
LIFE MECHANICAL		100,000 CYCLES
WEIGHT		1.0 LBS (16 OZ.)

- NOTES:**
- CONTACTOR IS POLARITY SENSITIVE. GENERATOR POSITIVE FEEDER TO BE CONNECTED TO A1.
 - AUXILIARY CONTACTS ARE GOLD PLATED.
 - THE 1 MILLIAMPERE RATING DOES NOT APPLY IF CONTACTS HAVE SWITCHED LOADS ABOVE 1 MILLIAMPERE.

4	1	48443-001	LABEL-DIRECTION			6-2252001-8	
3	1	47704-003	PLATE - NAME			7-2252003-4	
2	1	46095-300	CONTACTOR ASSY. PRIMARY			2-1616998-4	
1	1	44900-032	PLATE - SCHEMATIC DIAGRAM			5-1616998-4	
FIND NO	QTY REQD	PART OR IDENTIFYING NO	NOMENCLATURE OR DESCRIPTION	DRAWING OR SPECIFICATION	FSCM NO	TE PART NO	MATERIAL OR NOTE
			CAGE CODE: 74063	DWN		10APR2017	
			Harman 175 N. DIAMOND STREET MANSFIELD, OHIO 44902	RSS			
			DIMENSIONS: in[mm]	CHK		10APR2017	
			TOLERANCES UNLESS OTHERWISE SPECIFIED:	DKP			
			0 PLC ±	APVD		10APR2017	
			1 PLC ±	DWA			
			2 PLC ±.03				
			3 PLC ±.010				
			4 PLC ±	NAME CONTACTOR SPST N.O 500A 28 VDC MAGNETIC BLOWOUT K500B3C02			
ANGLE: 1 SURFACE TEXTURE: ✓				SCALE	SIZE	DRAWING NO	SHEET OF REV
				NONE	A 3	7-2252003-3	1 OF 1 A

A	RELEASED DWG	10APR2017	RSS	RSS
LTR	REVISION RECORD	DATE	DWN	APVD

THIS INFORMATION IS CONFIDENTIAL AND PROPRIETARY TO TEO AND IS NOT TO BE DISCLOSED TO ANY OTHER PERSONS OR ORGANIZATIONS WITHOUT THE WRITTEN AUTHORIZATION OF TEO. THIS INFORMATION IS CONFIDENTIAL AND PROPRIETARY TO TEO AND IS NOT TO BE DISCLOSED TO ANY OTHER PERSONS OR ORGANIZATIONS WITHOUT THE WRITTEN AUTHORIZATION OF TEO.