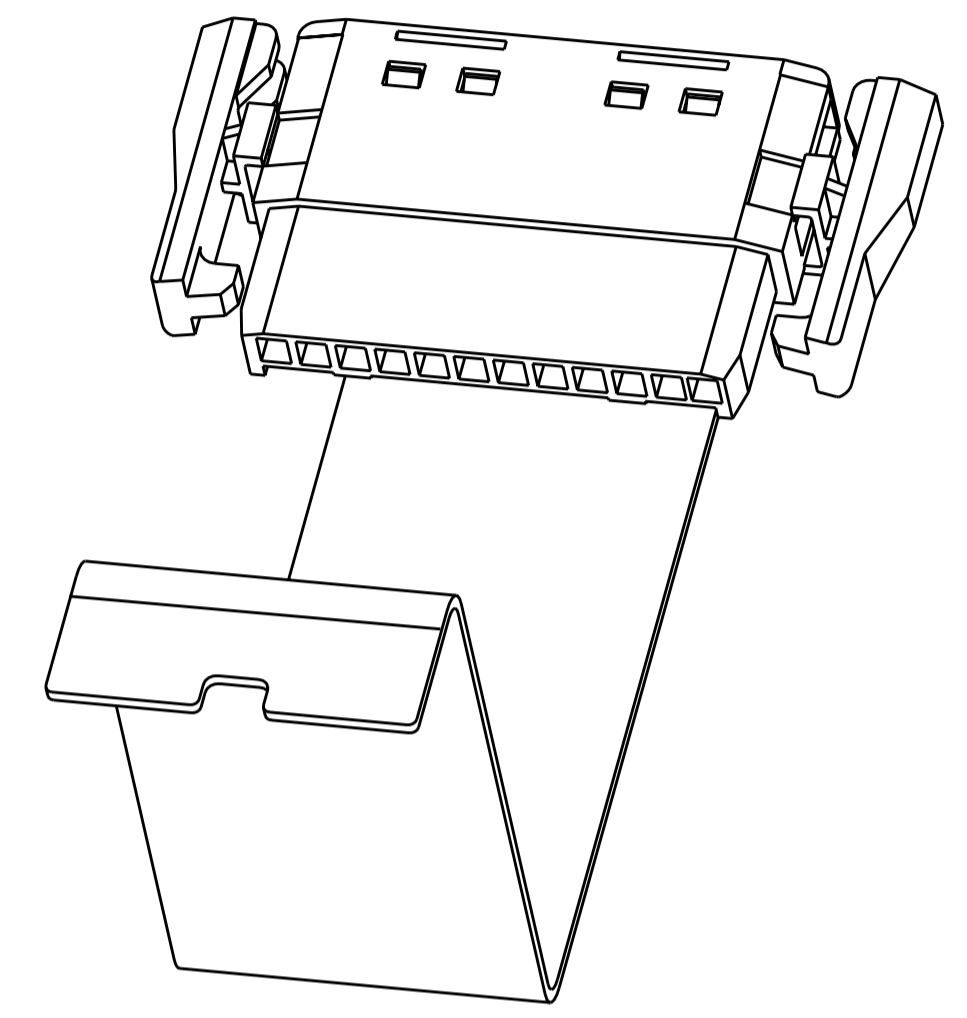
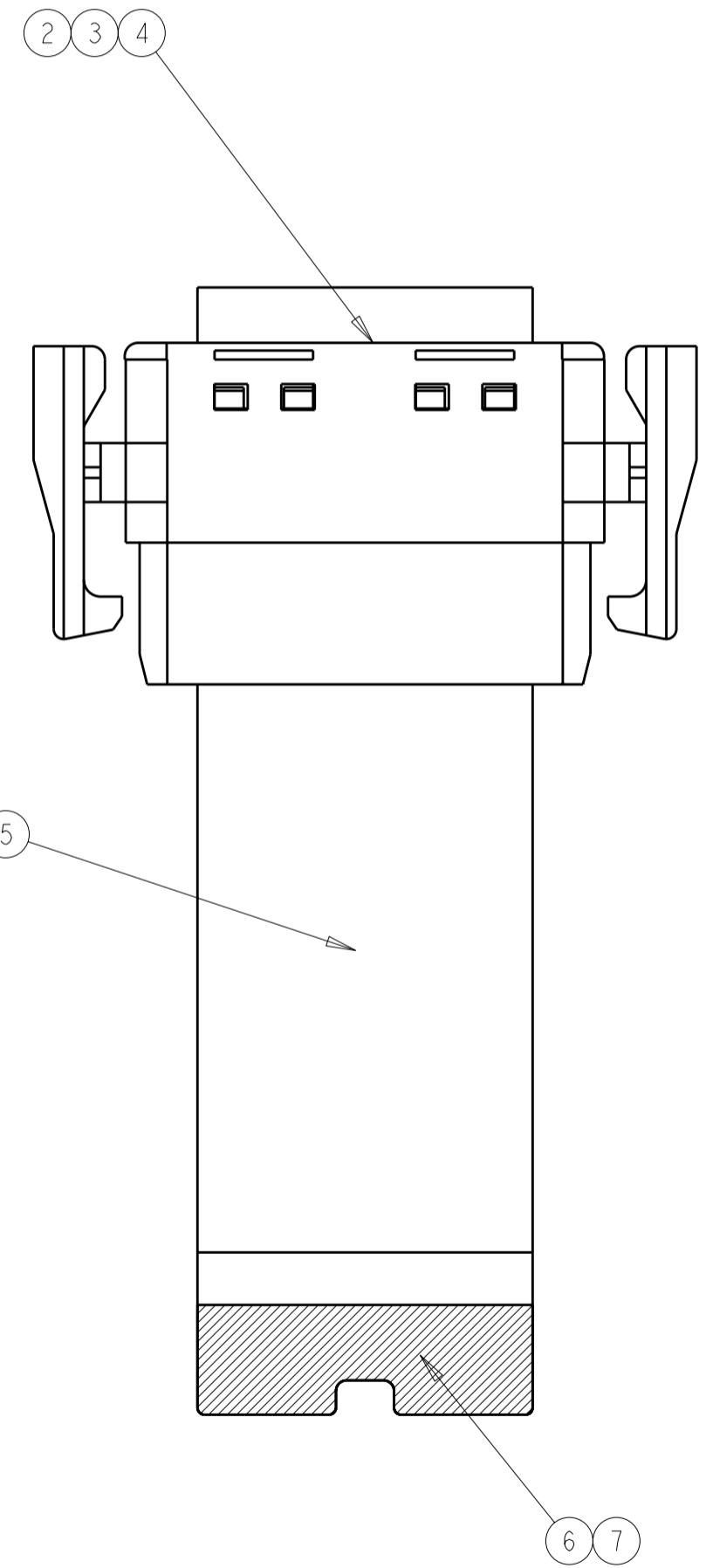
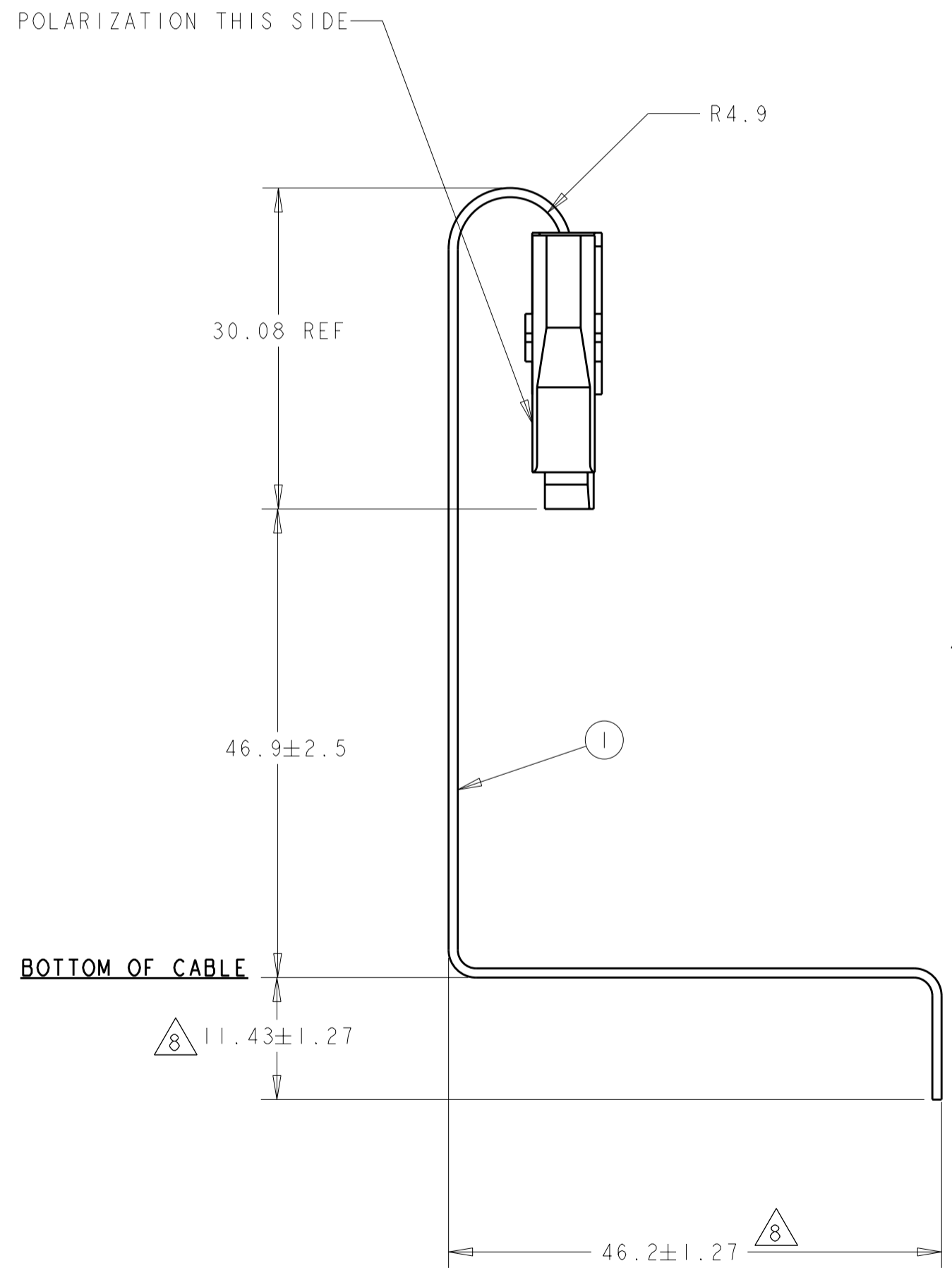
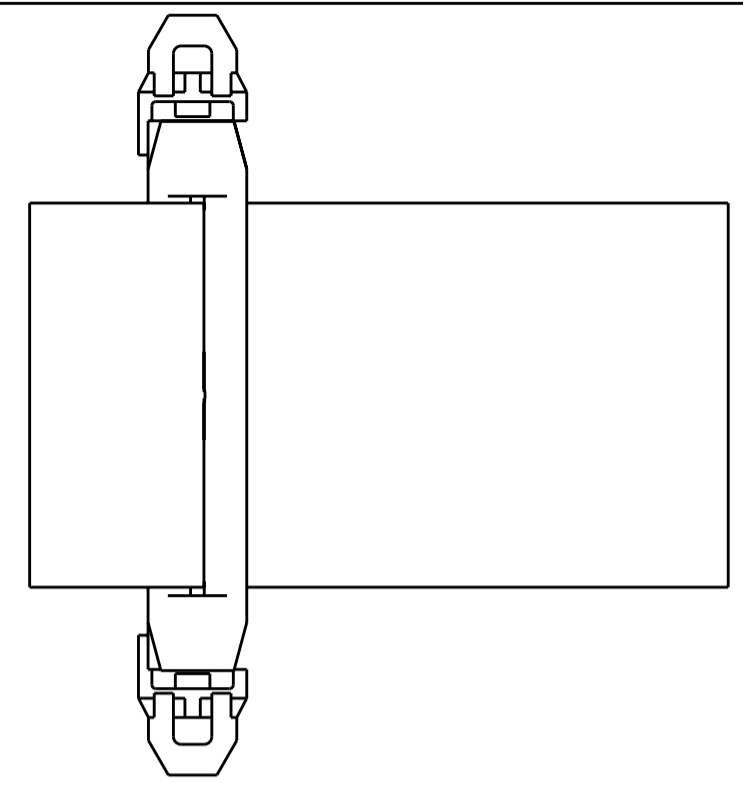


THIS DRAWING IS UNPUBLISHED. RELEASED FOR PUBLICATION .19
 © COPYRIGHT 19 BY AMP INCORPORATED. ALL RIGHTS RESERVED.

LOC	DIST	REVISIONS					
GP	00	F	LTR	DESCRIPTION	DATE	DWN	APVD
		A		RELEASED	13MAR2007	JPS	JPS
		A1		CORRECT 11.25 TOLERANCE	27MAR2007	JPS	JPS
		B		ECO-07-000972 43.9 to 46.9	11JAN2008	JPS	JPS



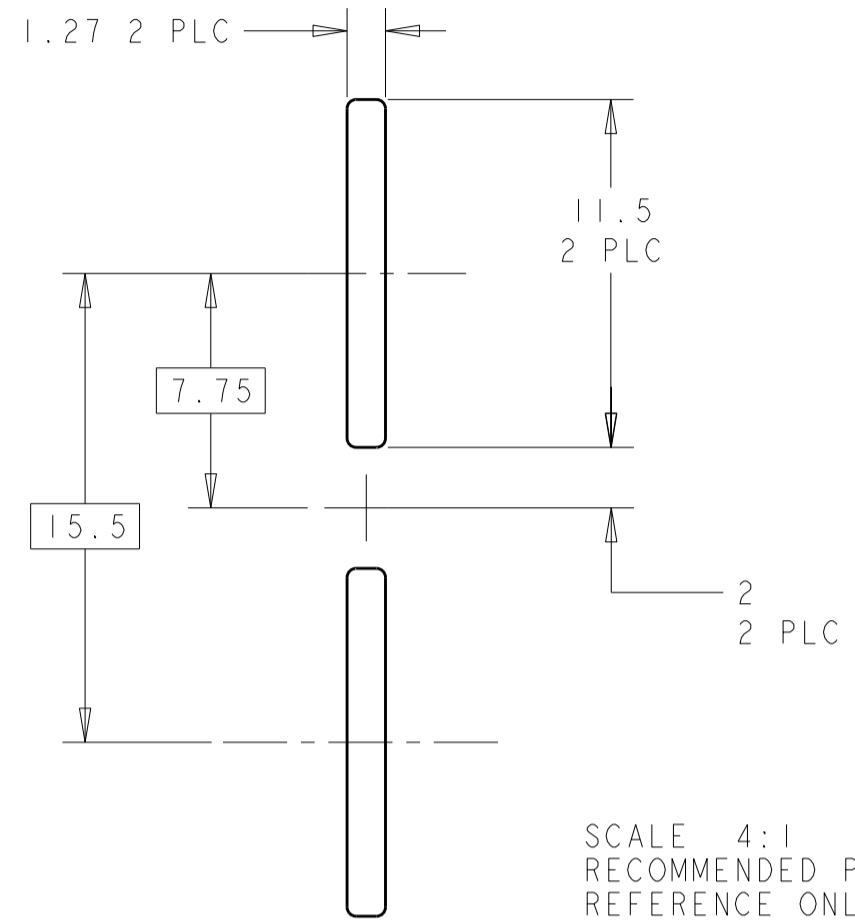
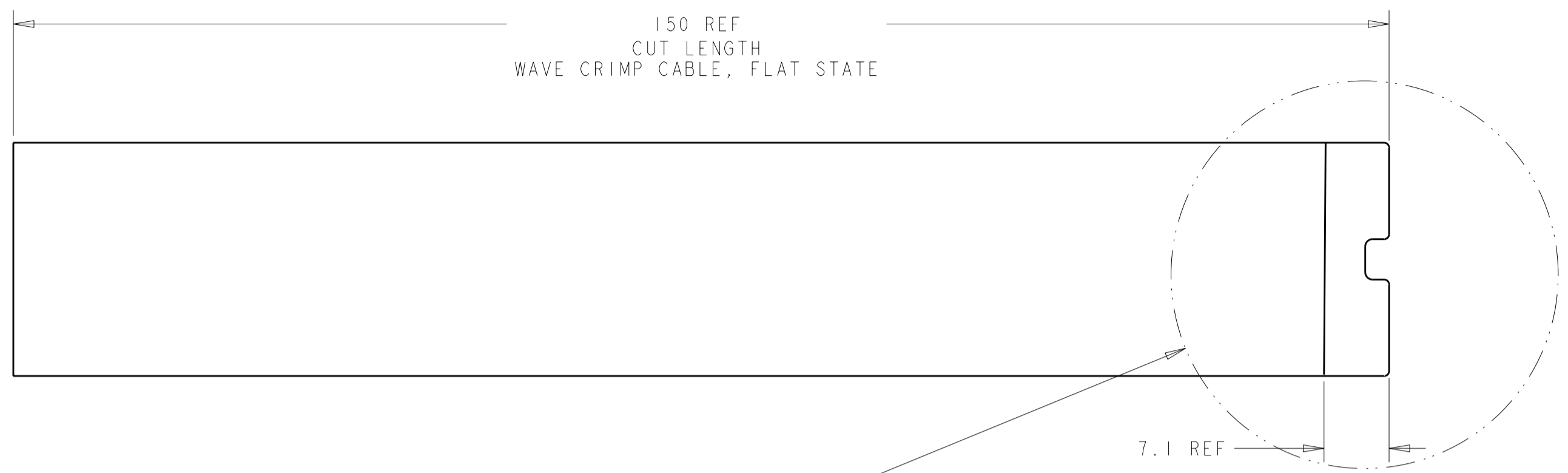
FLUX, KESTER 186	--	7
LEAD FREE SOLDER	--	6
1.88" X 0.69" LABEL POLYESTER	--	5
STRAIN RELIEF, PLUG	765182-1	4
TERMINAL, PLUG	765215-1	3
PLUG, HOUSING, SQUEEZE TO RELEASE	765181-1	2
CABLE, WAVE CRIMP .020" THICK	1-765210-8	1
DESCRIPTION	P/N	ITEM

HX818	766663-1
CUSTOMER P/N	P/N

<small>THIS DRAWING IS A CONTROLLED DOCUMENT FOR AMP INCORPORATED. IT IS SUBJECT TO CHANGE AND THE CONTROLLING ENGINEERING ORGANIZATION SHOULD BE CONTACTED FOR THE LATEST REVISION.</small>		DWN JAMES P. SCHOLZ 13MAR2007 CHK JAMES P. SCHOLZ 13MAR2007 APVD JAMES P. SCHOLZ 13MAR2007	AMP Tyco Electronics Harrisburg, PA 17105-3608
DIMENSIONS: mm 	TOLERANCES UNLESS OTHERWISE SPECIFIED: 0 PLC ± 1 PLC ± 2 PLC ± 3 PLC ± 4 PLC ± ANGLES ± FINISH -	PRODUCT SPEC 108-1308 APPLICATION SPEC 114-49005 WEIGHT -	NAME AMPOWER WAVE CRIMP POWER CABLE SIZE A2 CAGE CODE 00779 DRAWING NO. 766663 SCALE 3:1 SHEET 1 OF 2 REV B
CUSTOMER DRAWING			

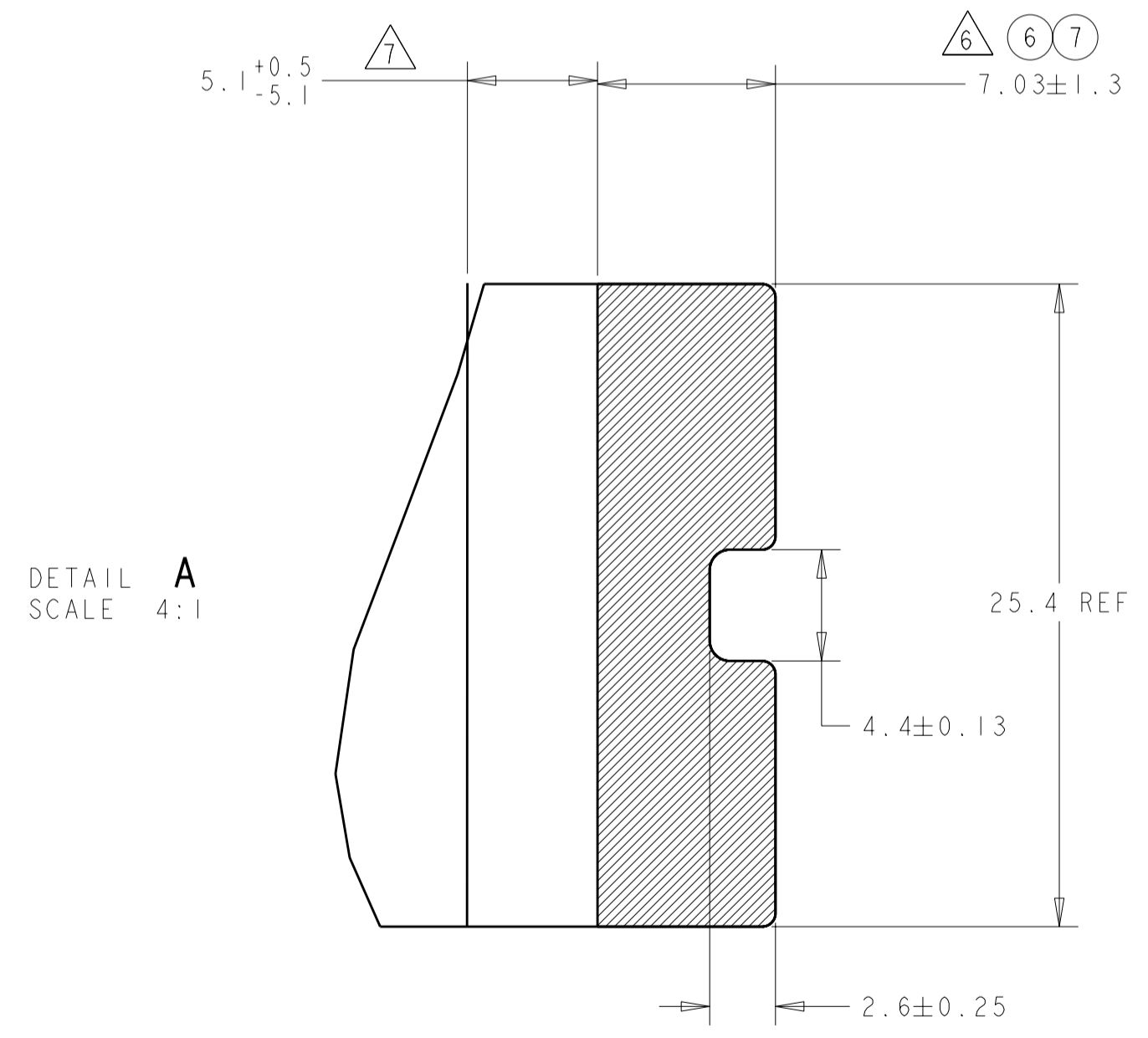
THIS DRAWING IS UNPUBLISHED. RELEASED FOR PUBLICATION .19
 BY AMP INCORPORATED. ALL RIGHTS RESERVED.

LOC	DIST	REVISIONS			
F	LTR	DESCRIPTION	DATE	DWN	APVD
GP	00	SEE SHEET 1			



SCALE 4:1
RECOMMENDED PCB LAYOUT
REFERENCE ONLY

SEE DETAIL A



DETAIL A
SCALE 4:1

NOTES: UNLESS OTHERWISE SPECIFIED

1. LABEL TO INCLUDE TE, TE P/N, DATE CODE, REVISION AND TRACE NUMBER, INCLUDING CUSTOMER PART (SEE TABLE) LOCATE APPROXIMATELY AS SHOWN
2. ALL CABLES SHALL PASS 100% POINT TO POINT CONTINUITY TEST, INDICATOR MARK "Ⓢ" APPLIED TO THE LABEL AFTER PASSING.
3. POWER CABLE CUT EDGE SHALL NOT PROTRUDE OUTSIDE OF HOUSING AS TO ALLOW EXPOSURE TO BARE COPPER.
4. CABLE LENGTH TOLERANCE UNLESS OTHERWISE NOTED;
ON 0.0 - 3810 MM LONG CABLE = +0.2%/10% OF TOTAL CABLE LENGTH WITH A MINIMUM TOLERANCE +6.35/-0.0"
ON CABLES OVER 3810 MM LONG = +1.0%/-0.0% OF TOTAL CABLE LENGTH.
5. BECAUSE OF SHIPPING CONSTRAINTS REFOLDING AND SHAPING OF CABLE ASSEMBLIES MAY BE REQUIRED BY THE CUSTOMER BEFORE INSTALLATION.
6. INSULATION STRIPPED AND COPPER HOT SOLDER DIPPED, SOLDER AND FLUX SPECIFIED AS ENGINEERING APPROVED ROHS COMPLIANT.
7. INSULATION TRANSITION AREA.
8. THESE DIMENSIONS TO BE MEASURED WITH CABLE FIXTURED IN PARALLEL.
9. PRODUCT AND PROCESSING MUST MEET REQUIREMENTS OF TYCO ELECTRONICS SPECIFICATION 230-702.

THIS DRAWING IS A CONTROLLED DOCUMENT FOR AMP INCORPORATED. IT IS SUBJECT TO CHANGE AND THE CONTROLLING ENGINEERING ORGANIZATION SHOULD BE CONTACTED FOR THE LATEST REVISION.		DWN JAMES P. SCHOLZ 13MAR2007	AMP Tyco Electronics Harrisburg, PA 17105-3608	
DIMENSIONS: mm		CHK JAMES P. SCHOLZ 13MAR2007	NAME AMPOWER WAVE CRIMP POWER CABLE	
TOLERANCES UNLESS OTHERWISE SPECIFIED: 0 PLC ± 1 PLC ± 2 PLC ± 3 PLC ± 4 PLC ± ANGLES ± FINISH -		APVD JAMES P. SCHOLZ 13MAR2007	DRAWING NO. 108-1308	
MATERIAL -		PRODUCT SPEC 114-49005	SIZE A2	CAGE CODE 00779
		APPLICATION SPEC 114-49005	DRAWING NO. 766663	
		WEIGHT -	SCALE 3:1 SHEET 2 OF 2 REV B	
		CUSTOMER DRAWING		